



For Lease

New construction space
available in The District
at Prairie Trail in Ankeny,
Iowa

Space is currently in shell condition. TI Allowance will be provided.

Availability: 1,160 RSF

Lease rate: \$22.00/RSF NNN

1465 SW Park Square Dr.
Ankeny, Iowa 50023

Property overview

Availability: Suite 203 | 1,160 RSF

Lease rate: \$22.00/RSF NNN

Est. OPEX: available upon request

- Positioned at the center of it all, The District is home to retail boutiques, dining and entertainment venues, civic uses, and more.
- Prairie Trail a 1,031-acre planned community built on the tradition of Iowa's greatest neighborhoods in Ankeny, Iowa.
- Ankeny, Iowa is the 10th fastest growing city in the United States by U.S. Census Bureau

Contact broker for additional information

jll.com/des-moines

Meredith Hedstrom

Vice President

meredith.hedstrom@jll.com

+1 515 419 2963

Nick Anderson

Associate

nicholas.anderson@jll.com

+1 515 729 6015

Marcus R. Pitts, CCIM, SIOR

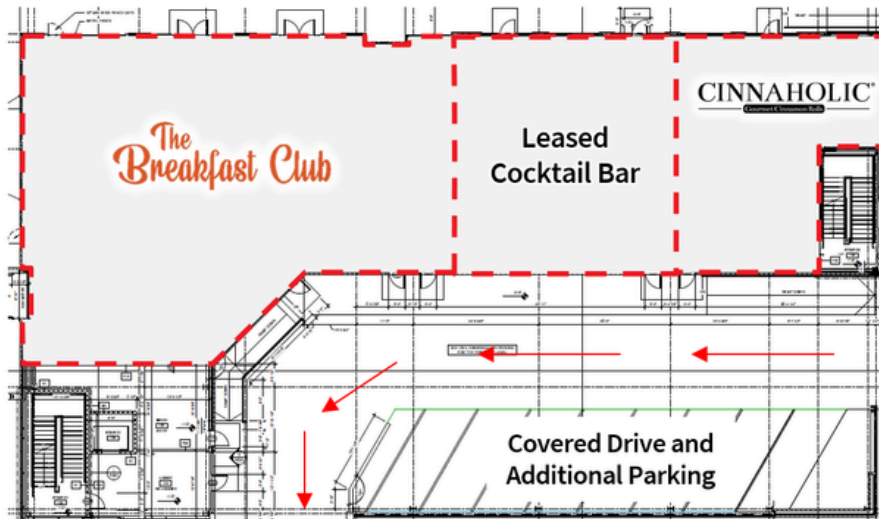
Senior Managing Director

marcus.pitts@jll.com

+1 515 556 4727

Floor plan

**For marketing purposes only.*

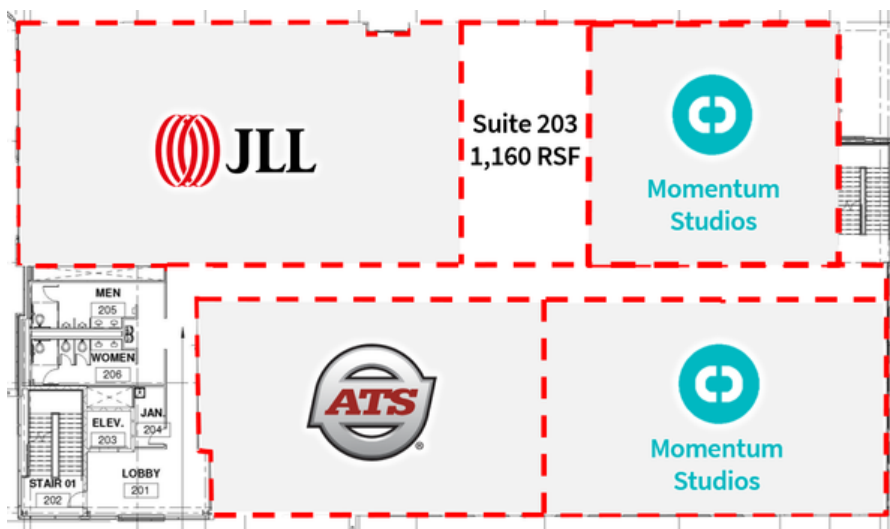


1st floor

Retail

Availability

- Fully leased

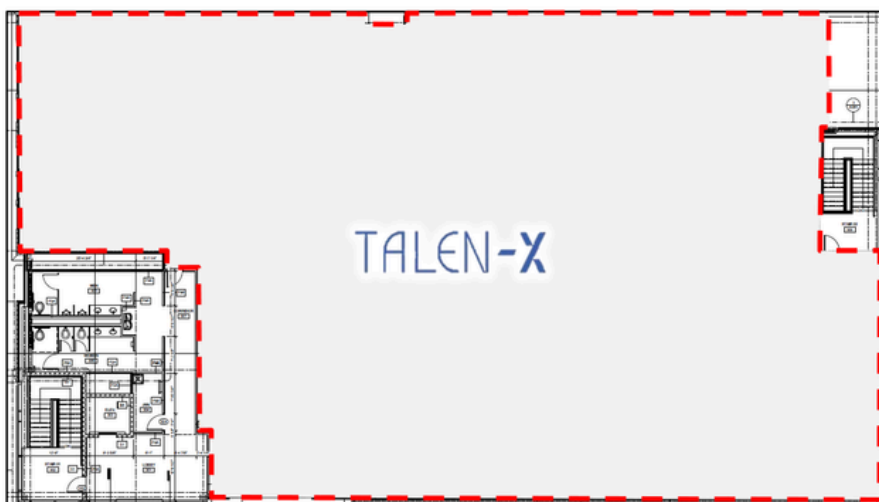


2nd floor

Office

Availability

- Suite 203 - 1,160 RSF
- \$22.00/RSF NNN



3rd floor

Office

Availability

- Fully leased

Property photos



For Lease

1465 SW Park Square Dr, Ankeny, IA 50023



Prairie Trail is a 1,031-acre urbanism community located in the heart of Ankeny, Iowa. Featuring single-and-multi-family residences, numerous retail boutiques, restaurants, entertainment venues, office users and 200+ acres of public parks, trails and open green spaces.

Contact broker for additional information
jll.com/des-moines

Meredith Hedstrom
Vice President
meredith.hedstrom@jll.com
+1 515 419 2963

Nick Anderson
Associate
nicholas.anderson@jll.com
+1 515 729 6015

Marcus R. Pitts, CCIM, SIOR
Senior Managing Director
marcus.pitts@jll.com
+1 515 556 4727