

Turnkey Salon Available For Lease

In The Heart Of Downtown Walnut Creek

1310 Mount Diablo Boulevard



±3,345 SF Available



Jones Lang LaSalle Brokerage, Inc.
Real Estate License #: 01856260

The Market

Walnut Creek is one of the premier suburban submarkets of the East Bay, with transit accessibility and attractive quality of life. The submarket's new transit-oriented developments have helped spur increased demand in the submarket in recent years.

Within 3 miles



105,538

Population



\$132,838

Median
Household Income



47.6

Median Age



125,774

Employees



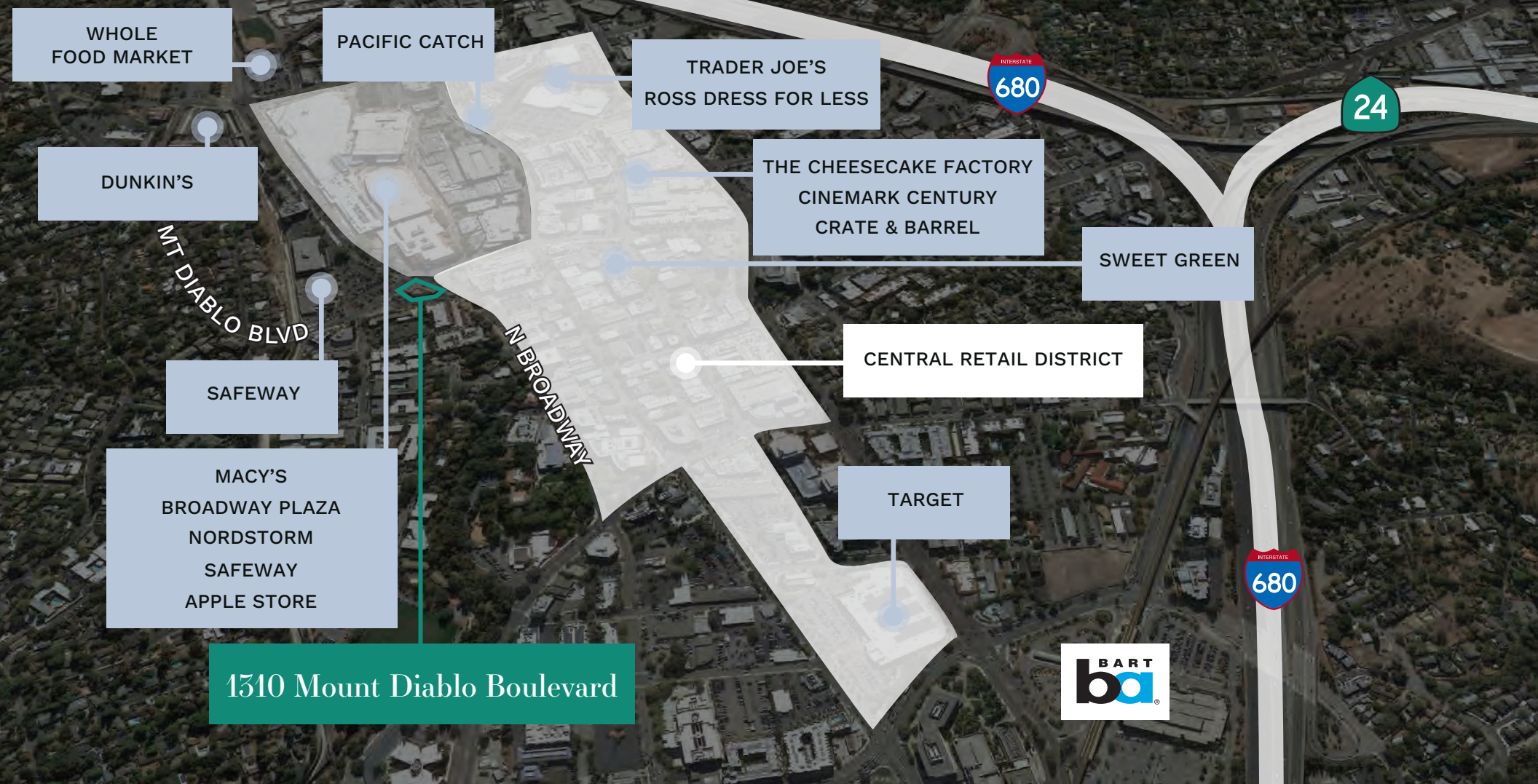
\$1,137,920

Median Home Value



\$2.32 B

Retail Spending



The Opportunity

1310 Mt Diablo Blvd is located in the heart of downtown Walnut Creek. Due to its centralized location in Contra Costa County and accessibility to major freeways and BART, Walnut Creek serves as a hub for commuters both to and from the East Bay. The city's desirable neighborhoods and top performing schools attract a highly educated and affluent population.



First Floor

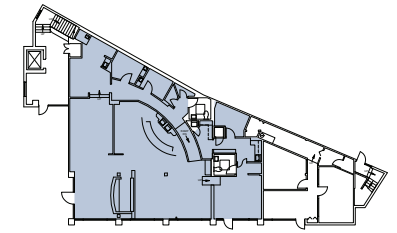
Suite 1310

3,345 SF Available

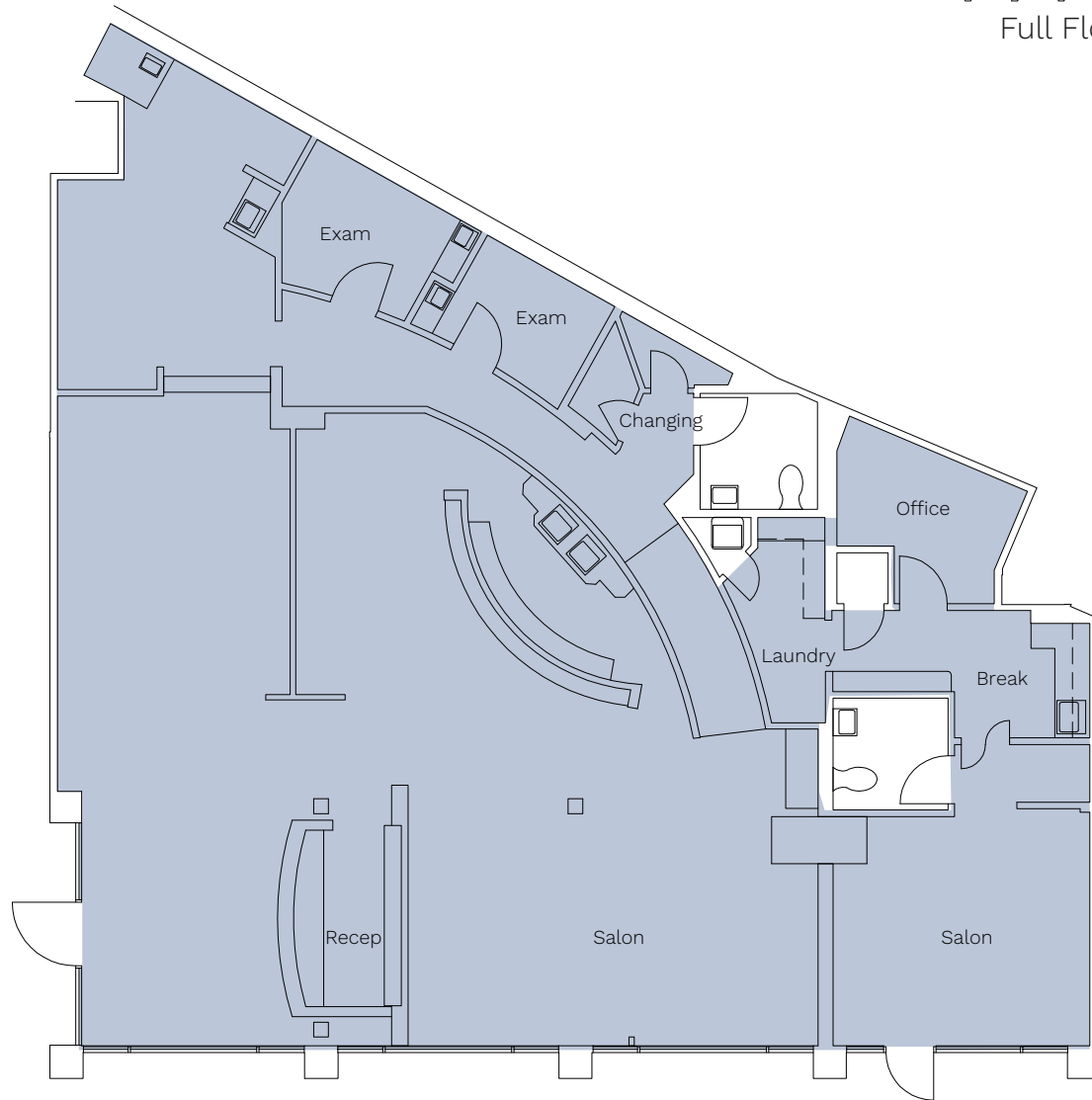
The Space

Highlights

- 2nd generation salon space
- Ideal for a personal service user
- Prominent visibility and signage
- Dedicated on-site parking



Full Floorplan



MT DIABLO BLVD

Ben Lazzareschi

Managing Director
+1 415 228 3072
ben.lazzareschi@jll.com
License# CA-01414579

David Kessler

Associate
+1 415 510 6957
david.kessler@jll.com
License# CA-02112097



Although information has been obtained from sources deemed reliable, JLL does not make any guarantees, warranties or representations, express or implied, as to the completeness or accuracy as to the information contained herein. Any projections, opinions, assumptions or estimates used are for example only. There may be differences between projected and actual results, and those differences may be material. JLL does not accept any liability for any loss or damage suffered by any party resulting from reliance on this information. If the recipient of this information has signed a confidentiality agreement with JLL regarding this matter, this information is subject to the terms of that agreement. ©2024 Jones Lang LaSalle Brokerage, Inc. All rights reserved.

