

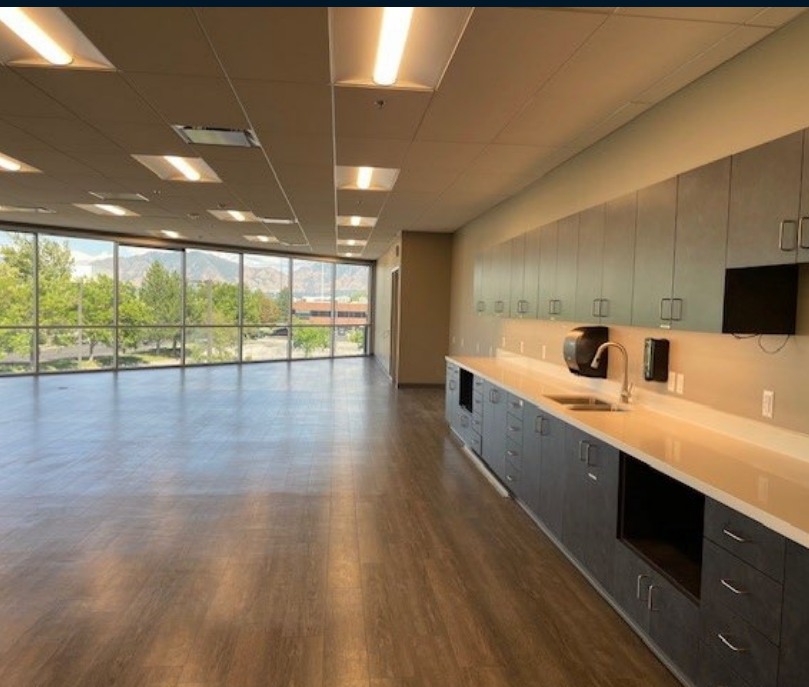
For Lease

1065 W Levoy Drive
Taylorsville, Utah

Floors 1 & 2
Available

Property Overview & Map

Prime location in Central Salt Lake County, with easy access to major freeways, Salt Lake City International Airport, and retail amenities.



1065 W Levoy Drive Taylorsville, Utah

1065 Levoy Drive Highlights

1st Floor | 5,315 - 22,904 RSF Available Now

2nd Floor | 6,103 - 22,837 RSF Available Now

Lease Rate: \$22.00/SF

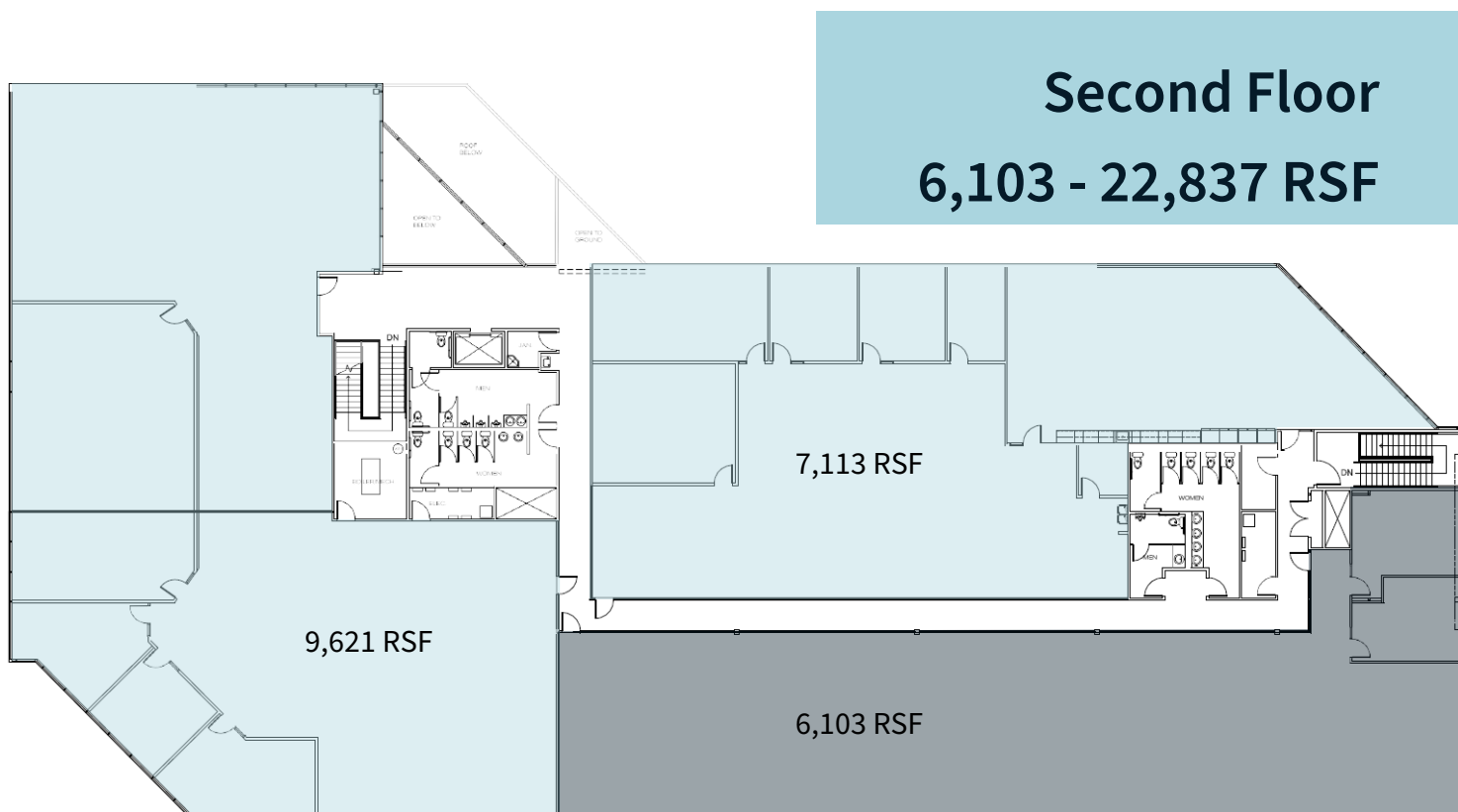
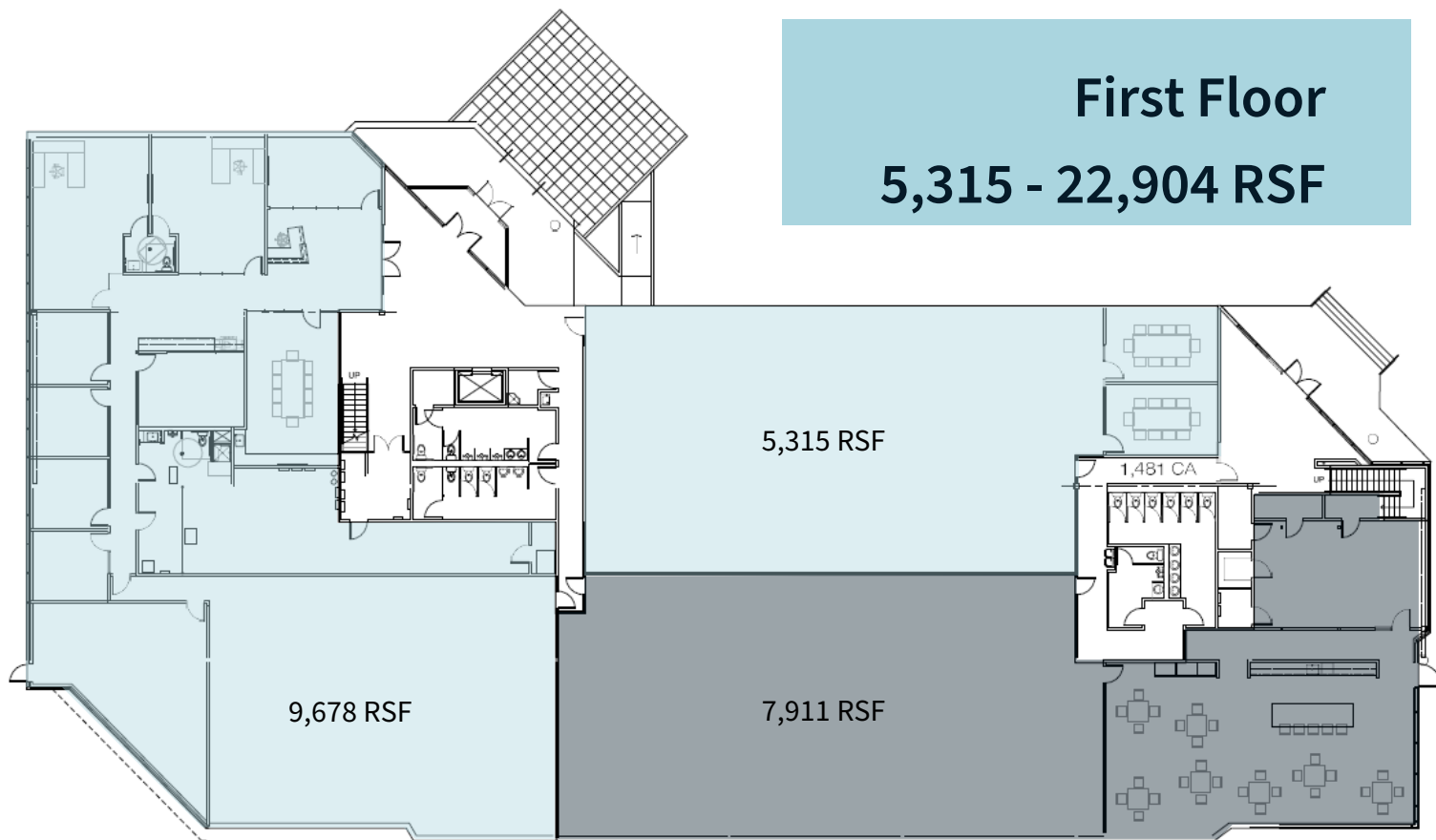
5.0/1,000 parking ratio

Crown Signage Available

Quick drive to major freeways

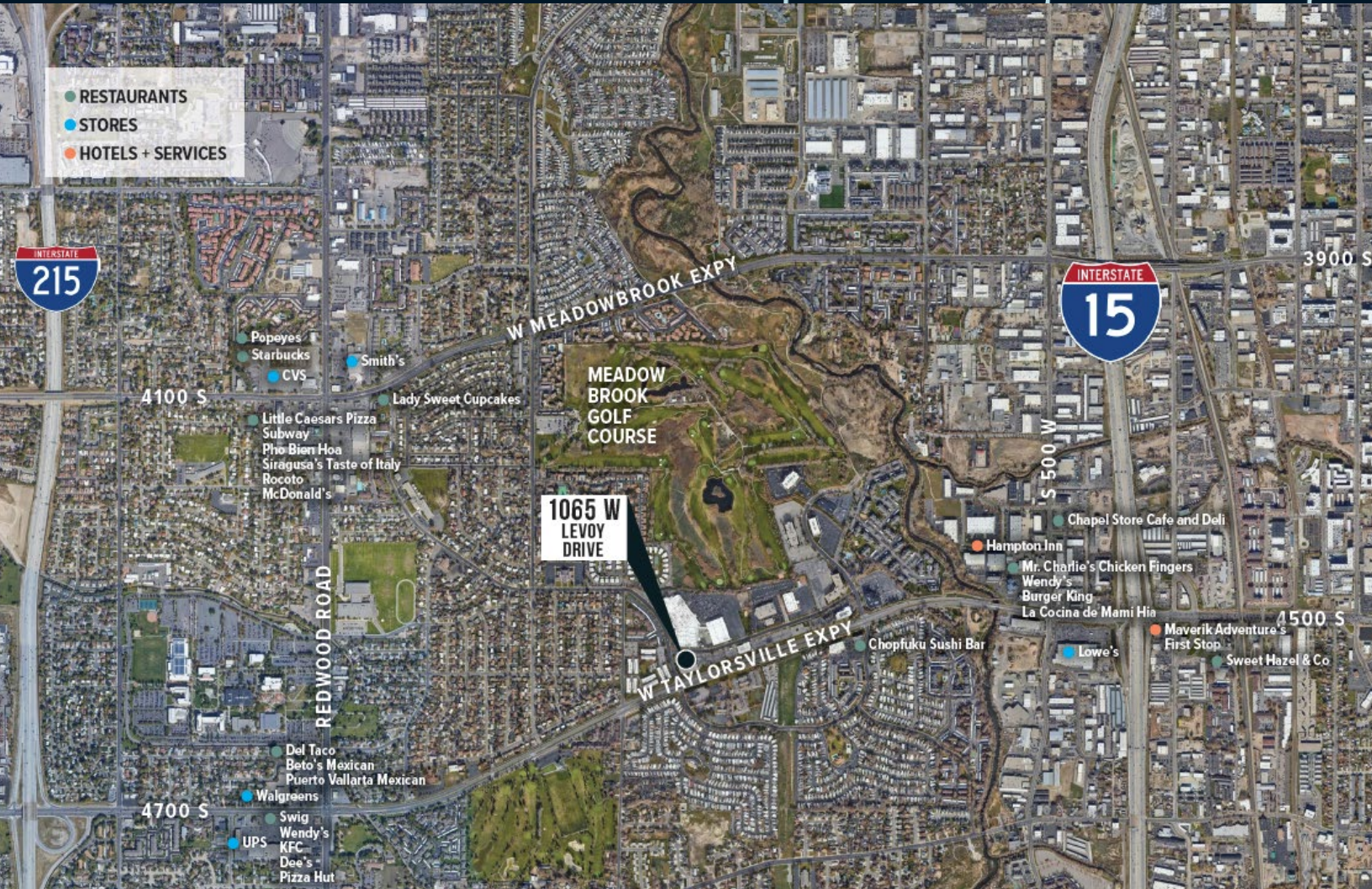
Backup generator onsite





About JLL

For over 200 years, JLL (NYSE: JLL), a leading global commercial real estate and investment management company, has helped clients buy, build, occupy, manage and invest in a variety of commercial, industrial, hotel, residential and retail properties. A Fortune 500® company with annual revenue of \$20.9 billion and operations in over 80 countries around the world, our more than 103,000 employees bring the power of a global platform combined with local expertise. Driven by our purpose to shape the future of real estate for a better world, we help our clients, people and communities SEE A BRIGHTER WAYSM. JLL is the brand name, and a registered trademark, of Jones Lang LaSalle Incorporated. For further information, visit jll.com.



David Nixon

+1 801 456 9518

David.nixon@jll.com

Jillian Johnson Hanks

+1 801 456 9517

Jillian.johnson@jll.com