



Intermandeco
Proposed Mixed-Use Development
 178 Acre Master Planned Community
 400-500 Single Family Homes
 Multifamily, Commercial & Industrial

E. Martin Luther King Jr. Industrial Blvd.

S. Commerce St.

1322

NWC FM 1322 & E. MLK JR. INDUSTRIAL BLVD.

Lockhart, TX

FOR SALE | ±1.81 AC AVAILABLE

EXECUTIVE SUMMARY

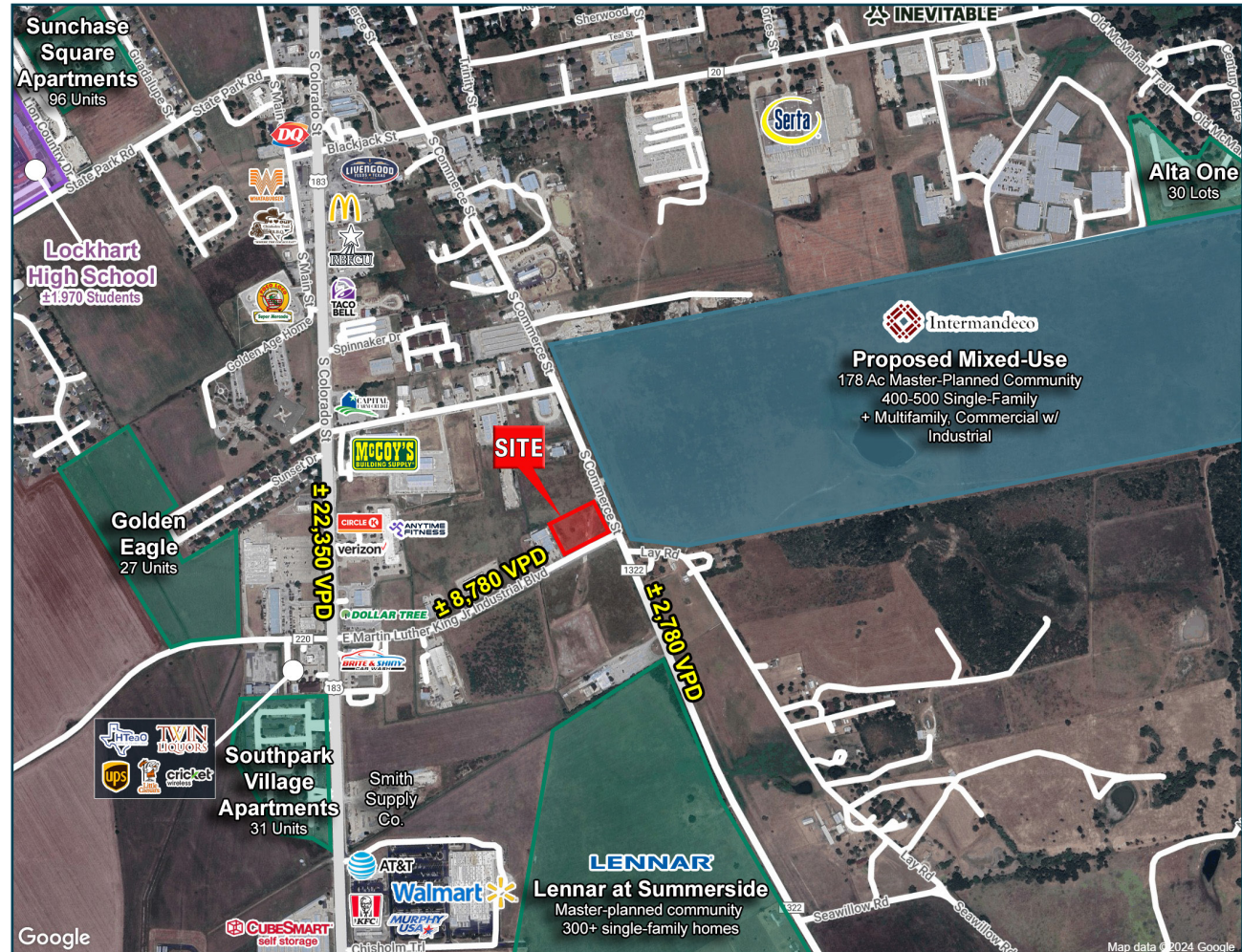
FM 1322 & E MLK JR BLVD | LOCKHART, TX

JLL has been exclusively retained to offer for sale the land located at NWC FM 1322 & E. MLK Jr. Industrial Blvd. Lockhart, Texas 78644.

The site is just off the main retail corridor in Lockhart, Hwy 183/S Colorado St. It is also approximately 34 miles south of Downtown Austin, Texas and 63 miles northwest of Downtown San Antonio, Texas.

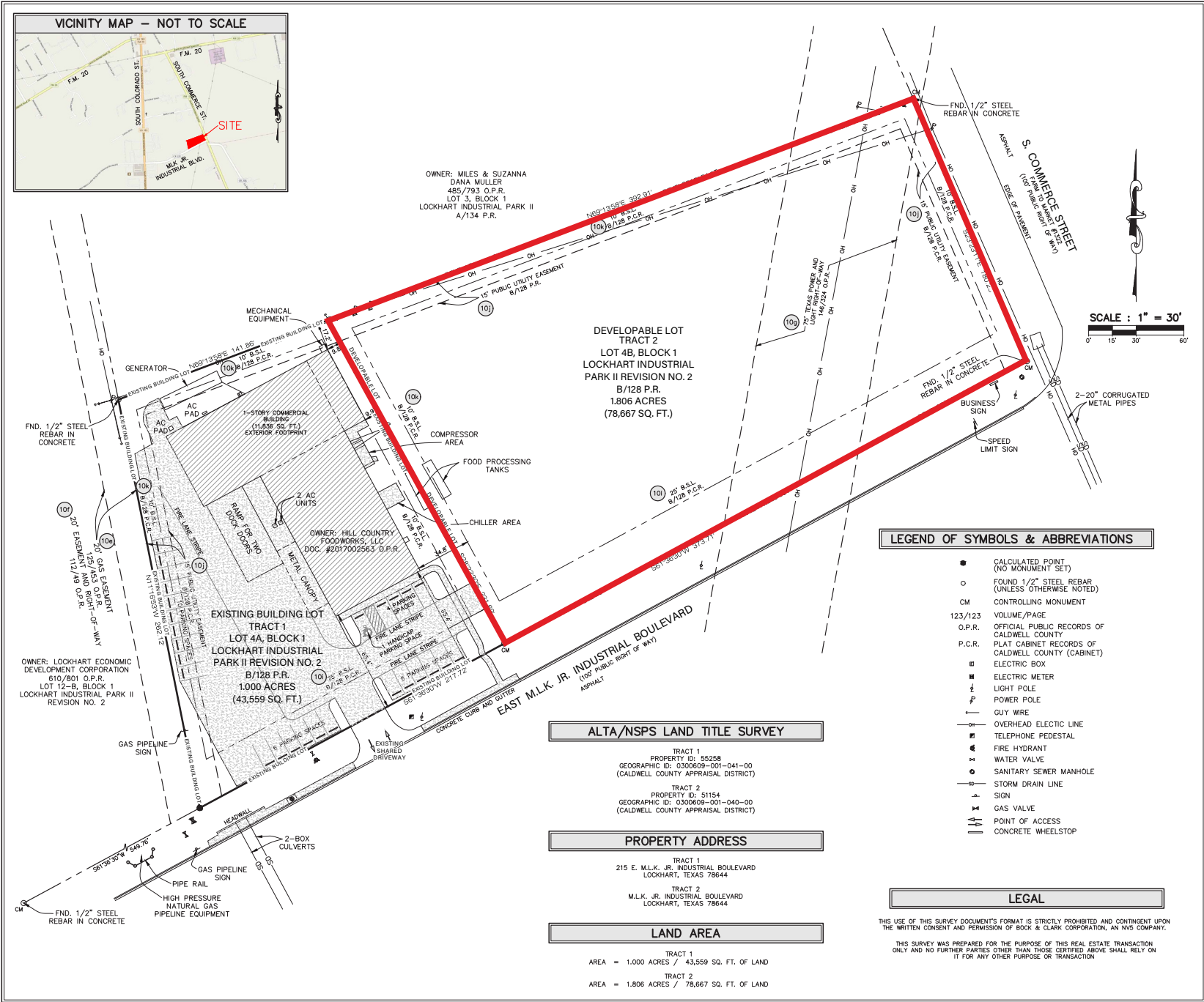
The property is conveniently located in an accessible light industrial pocket that sits on the main corridor between two emerging Master Planned communities.

To the east of the property, there is a 178 Acre master planned community that will include 400-500 single family homes, multifamily, commercial and industrial development. To the immediate south, there's another master planned community by Lennar that will include 300+ single family homes.



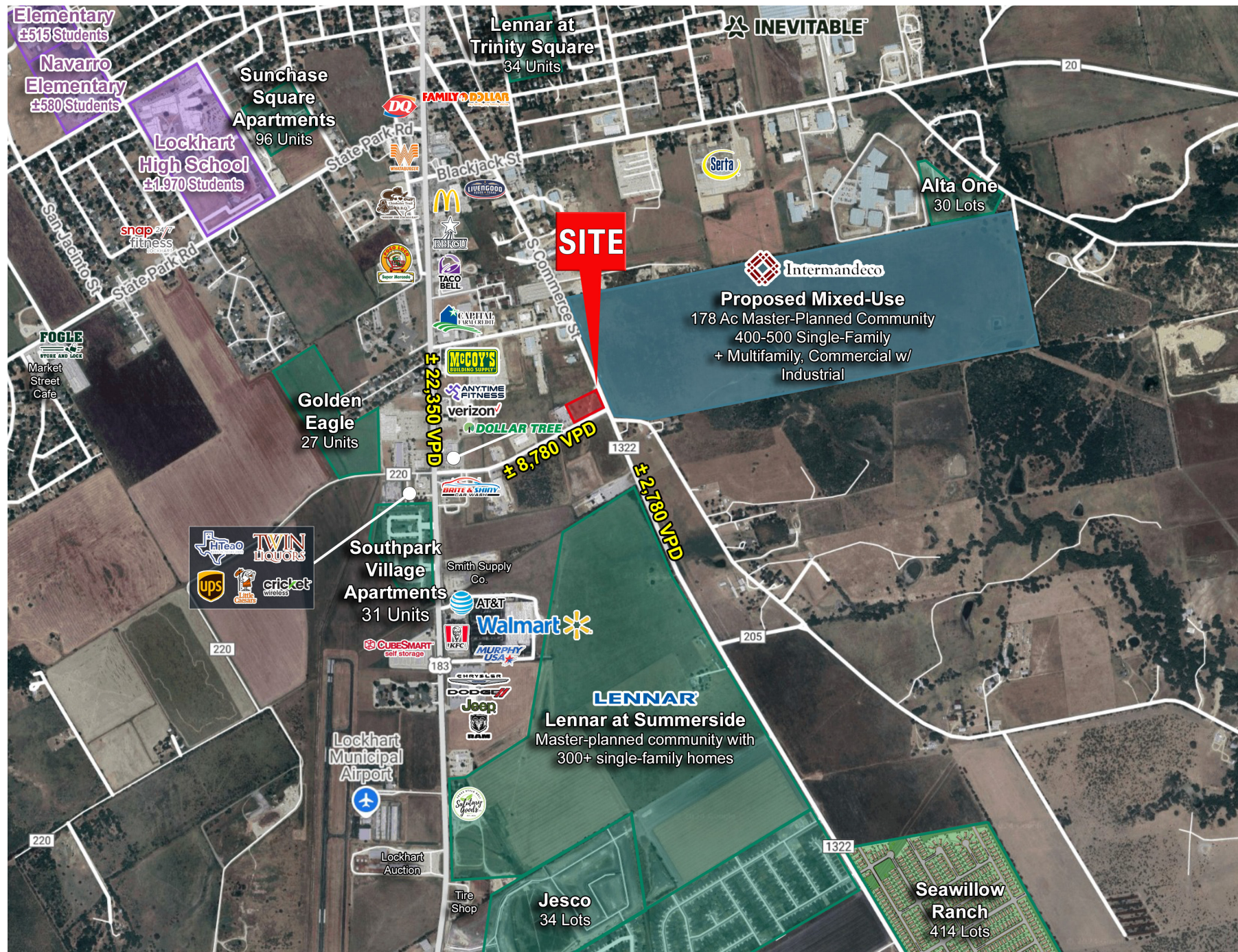
Demographics	1 mile	3 miles	5 miles
Population	2,942	15,211	17,813
Households	726	5,109	6,047
Avg. HH Income	\$83,724	\$89,204	\$89,245
Daytime Population	3,938	13,893	15,689

SITE SURVEY



TRADE AREA AERIAL

FM 1322 & E MLK JR BLVD | LOCKHART, TX



PROPERTY PHOTOS

FM 1322 & E MLK JR BLVD | LOCKHART, TX





BROKER CONTACTS

Jeffrey Gotte

Vice President

+1 512 952 8186

Jeffrey.Gotte@jll.com

Reid Gilbreath

Vice President

+1 832 797 8061

Reid.Gilbreath@jll.com

Graham Schmergel

Executive Vice President

+1 512 861 3423

Graham.Schmergel@jll.com

FM 1322 & E MLK JR INDUSTRIAL BLVD

LOCKHART, TX