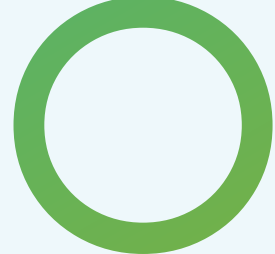
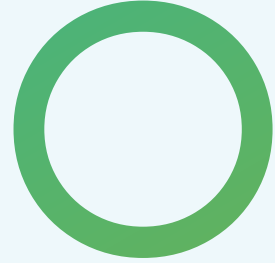
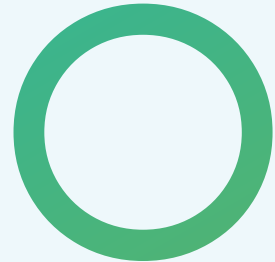





N A T H A N



Class A office space
available for lease

PLYMOUTH, MN



WELCOME TO 6000 NATHAN LANE

A serene workplace strategically located in the Medical Corridor

Welcome to 6000 Nathan Lane, the Northwest suburb's premier office destination. This Class A building offers an unparalleled environment, combining modern amenities with a strategic location adjacent to I-169 and just 5 miles from Arbor Lakes. What truly sets 6000 Nathan Lane apart are its breathtaking views of lush green spaces and an inviting outdoor patio, creating an inspiring atmosphere that fosters productivity and well-being. Experience the perfect blend of accessibility, prestige, and natural beauty at 6000 Nathan Lane.





AMENITIES



5.0/1,000 SF
parking ratio



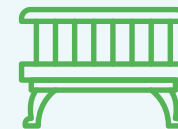
State-of-the-art
training room



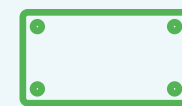
Fitness center



Tenant lounge



Outdoor Patio



Unique Branding
Opportunities



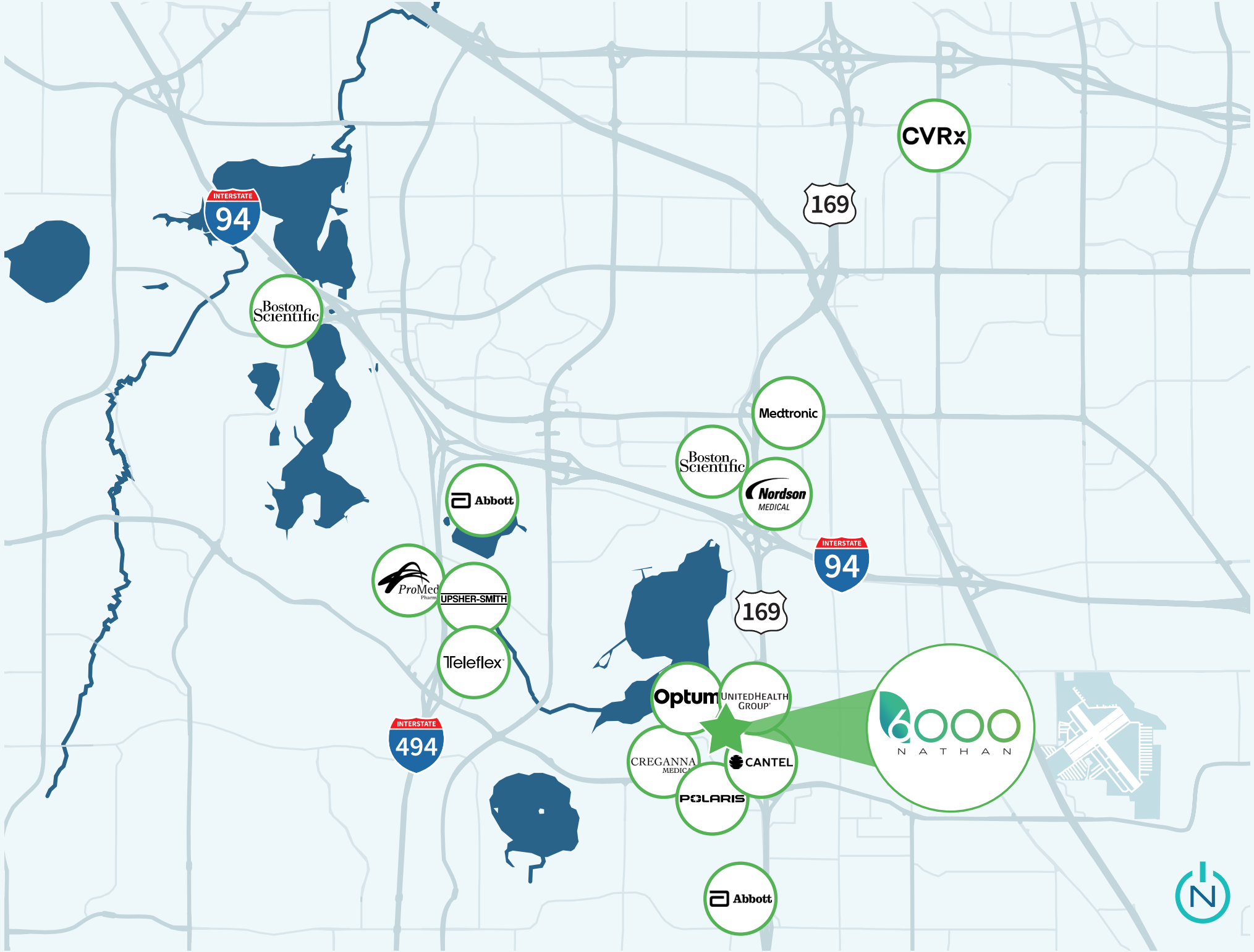


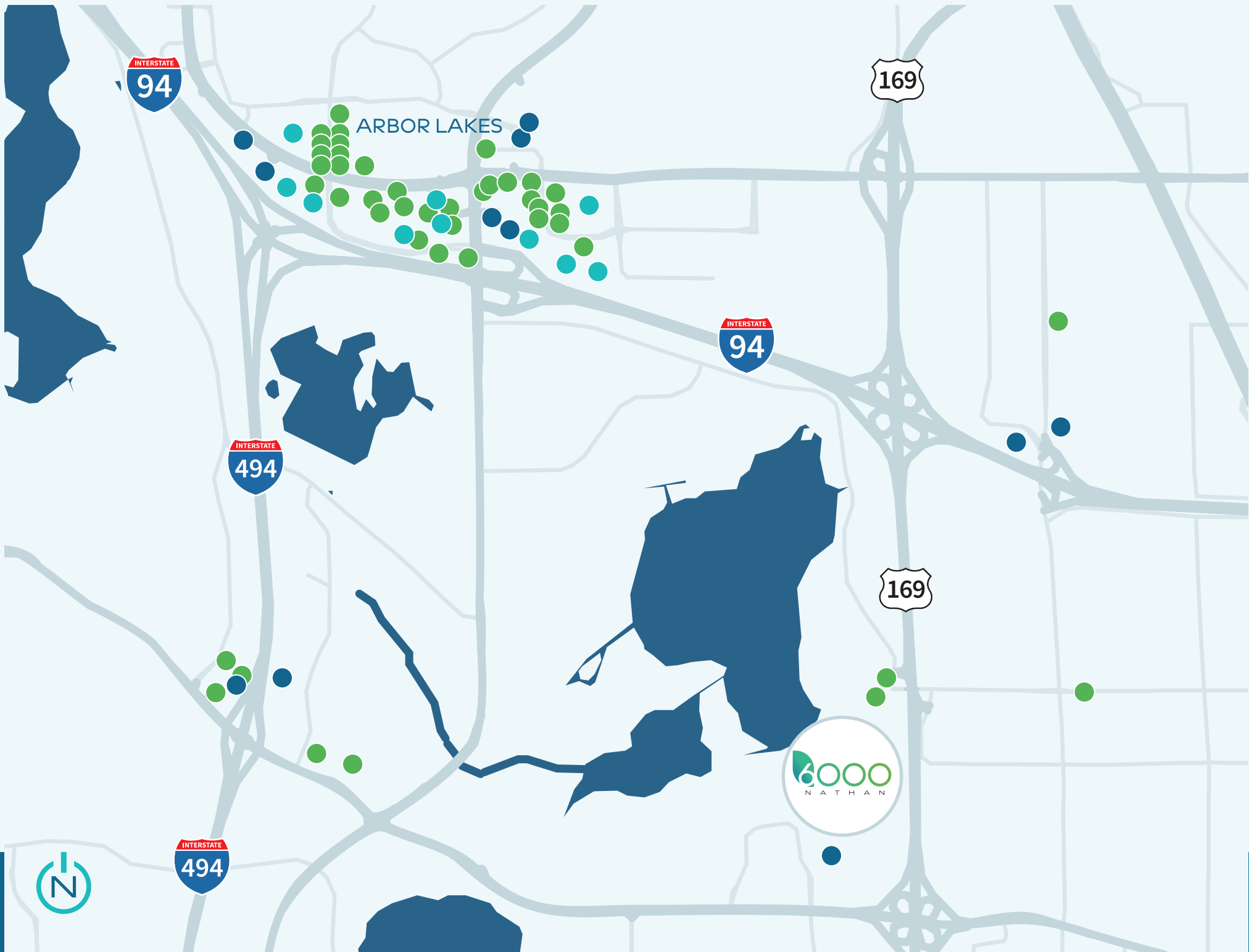
THE NORTHWEST MEDICAL CORRIDOR

Surrounded by a prestigious corporate neighborhood, 6000 Nathan Lane offers unparalleled access to the life science community in the medical corridor.



13,302 SF SPACE AVAILABLE
WITH LAB INFRASTRUCTURE IN PLACE





45+
RESTAURANTS



10+
LARGE RETAILERS



10+
HOTELS AND LODGING

THE NEIGHBORHOOD



2 MINUTE DRIVE
I-169



6 MINUTE DRIVE
ARBOR LAKES



15 MINUTE DRIVE
DOWNTOWN MINNEAPOLIS

MAP KEY

- RESTAURANTS
- LARGE RETAILERS
- HOTELS AND LODGING



THE OPPORTUNITY

Big block spaces available
6,500 - 120,000 SF



10' Ceiling height



Furnished, move-in
ready suites



Ribbon
glass windows



Views of serene
green space

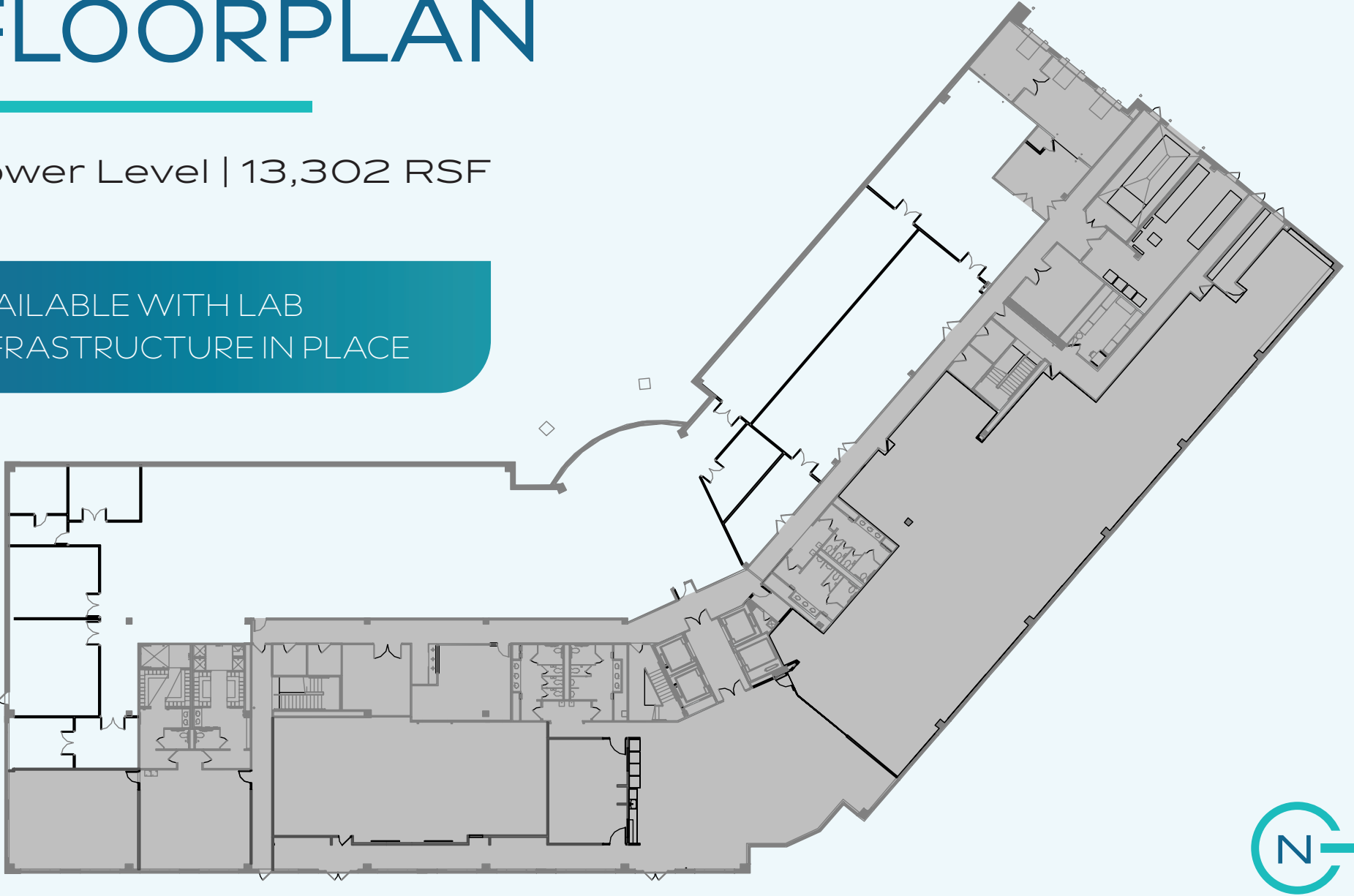
Building signage facing Hwy 169



FLOORPLAN

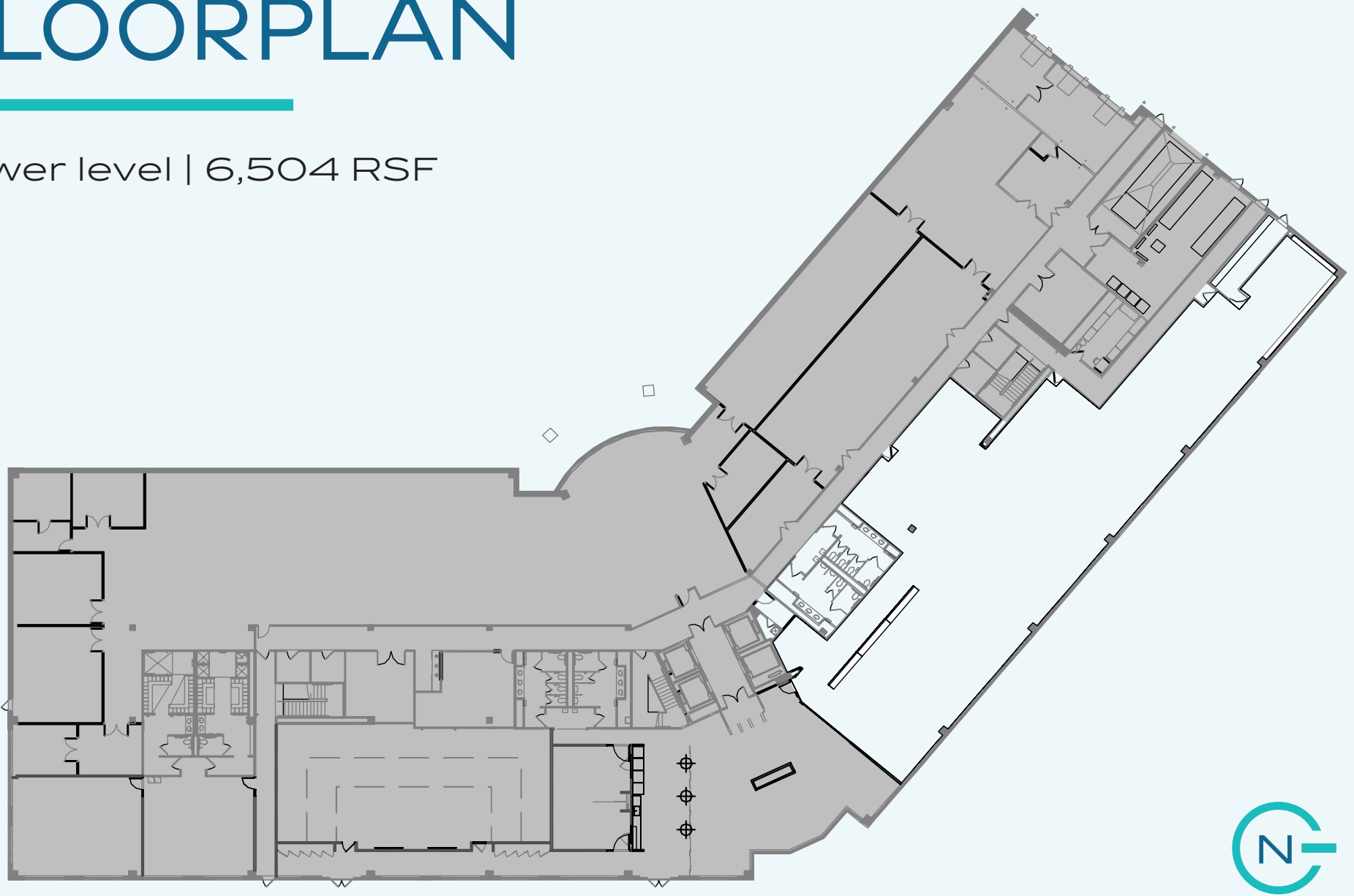
Lower Level | 13,302 RSF

AVAILABLE WITH LAB
INFRASTRUCTURE IN PLACE



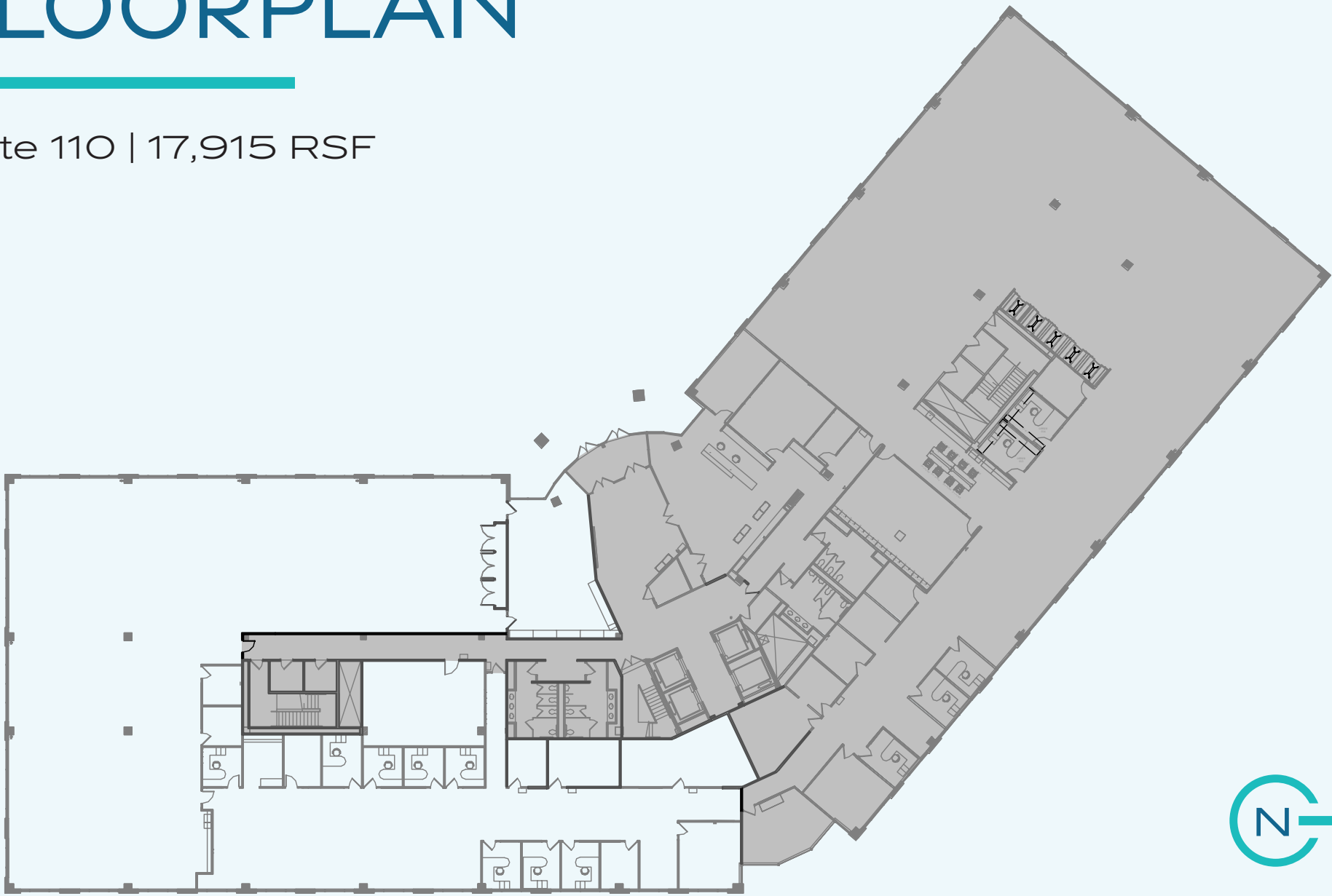
FLOORPLAN

Lower level | 6,504 RSF



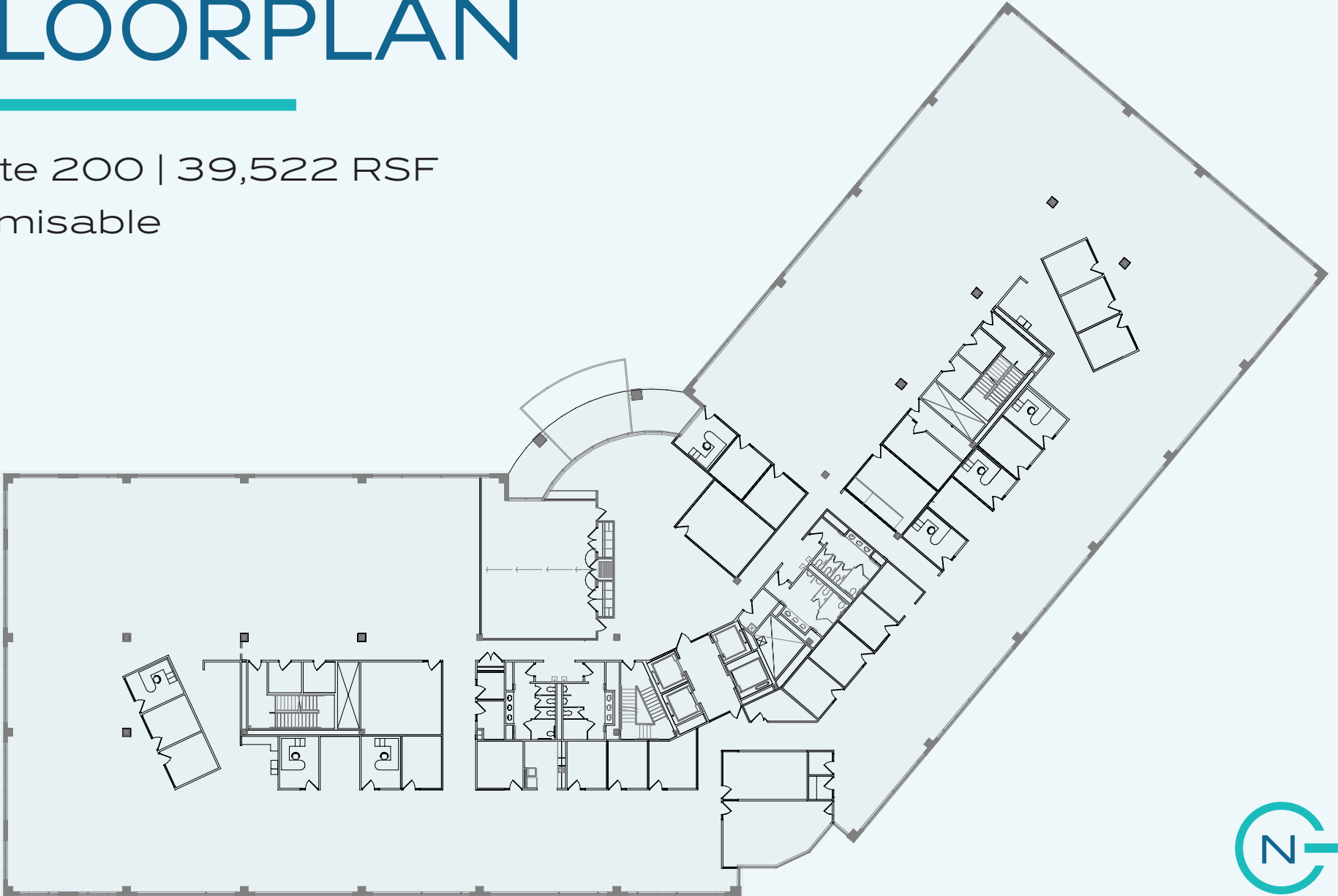
FLOORPLAN

Suite 110 | 17,915 RSF



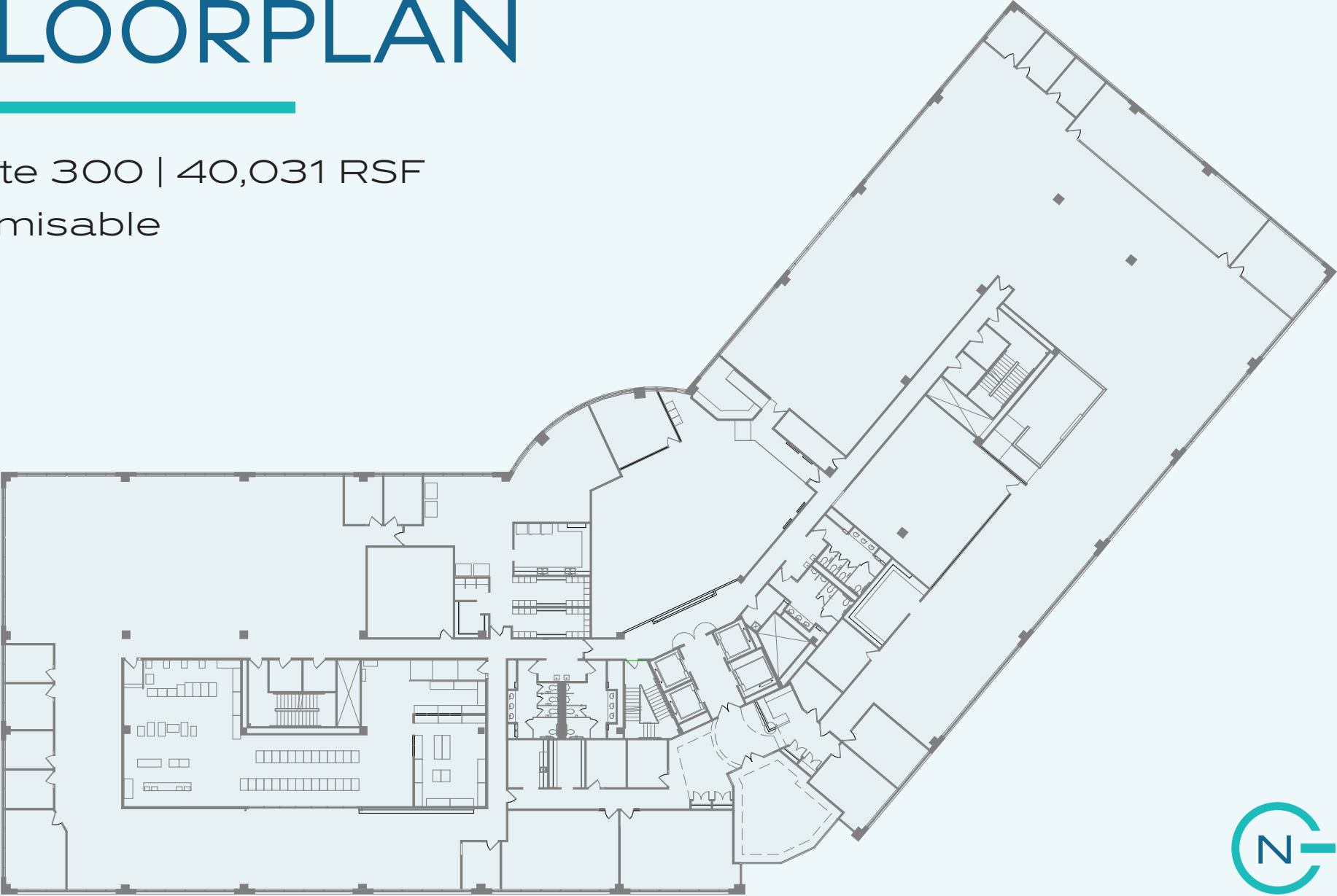
FLOORPLAN

Suite 200 | 39,522 RSF
Demisable



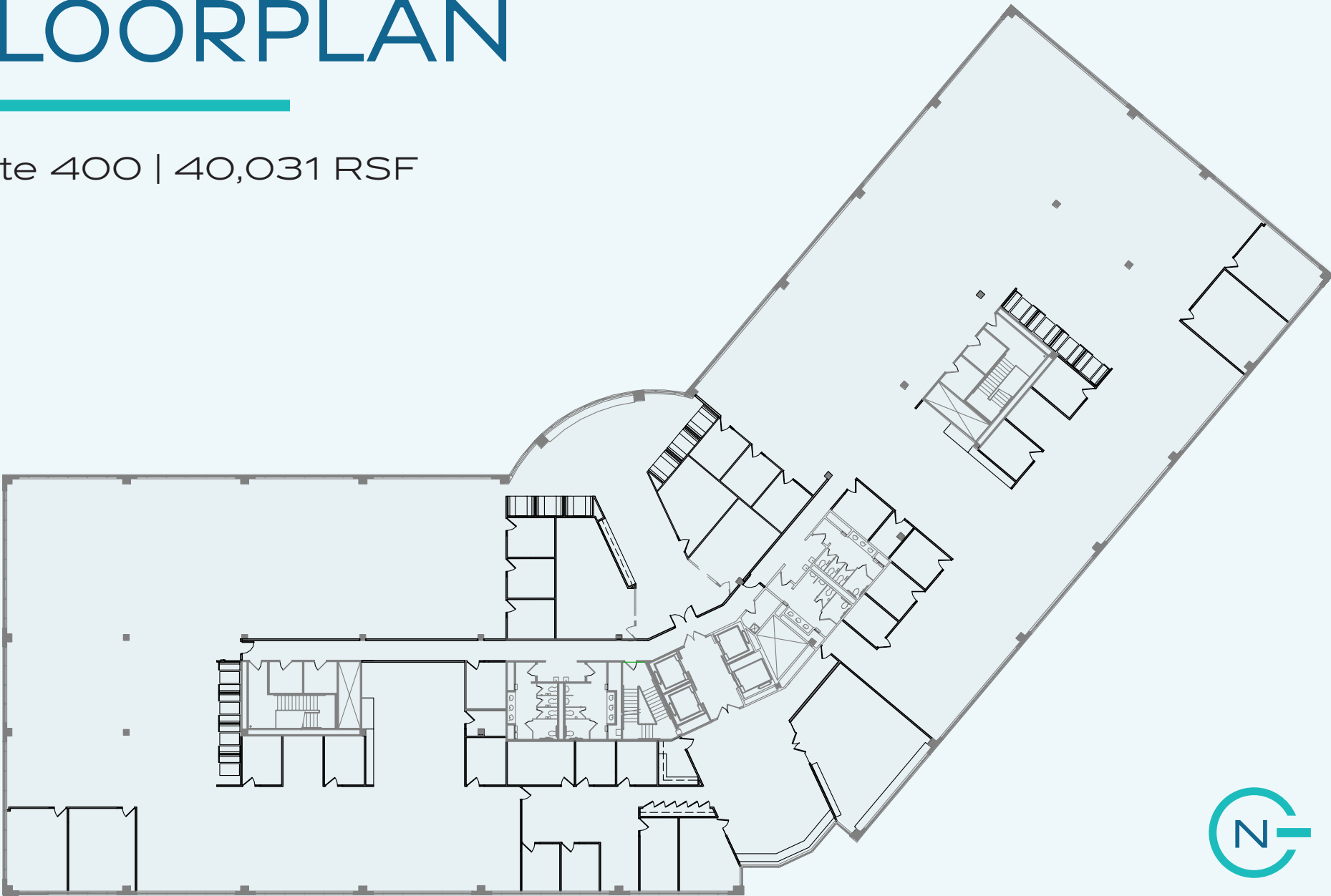
FLOORPLAN

Suite 300 | 40,031 RSF
Demisable



FLOORPLAN

Suite 400 | 40,031 RSF







NATHAN



Although information has been obtained from sources deemed reliable, neither Owner nor JLL makes any guarantees, warranties or representations, express or implied, as to the completeness or accuracy as to the information contained herein. Any projections, opinions, assumptions or estimates used are for example only. There may be differences between projected and actual results, and those differences may be material. The Property may be withdrawn without notice. Neither Owner nor JLL accepts any liability for any loss or damage suffered by any party resulting from reliance on this information. If the recipient of this information has signed a confidentiality agreement regarding this matter, this information is subject to the terms of that agreement.
©2024 Jones Lang LaSalle IP, Inc. All rights reserved.

Leasing Contacts

Jon Dahl

Jon.dahl@jll.com

+1 612 217 5130

Brent Robertson

Brent.robertson@jll.com

+1 612 217 5132