



# For Sublease - 114,913 Sq. Ft.

140 Exchange | Glendale Heights, IL 60139

# Property Features

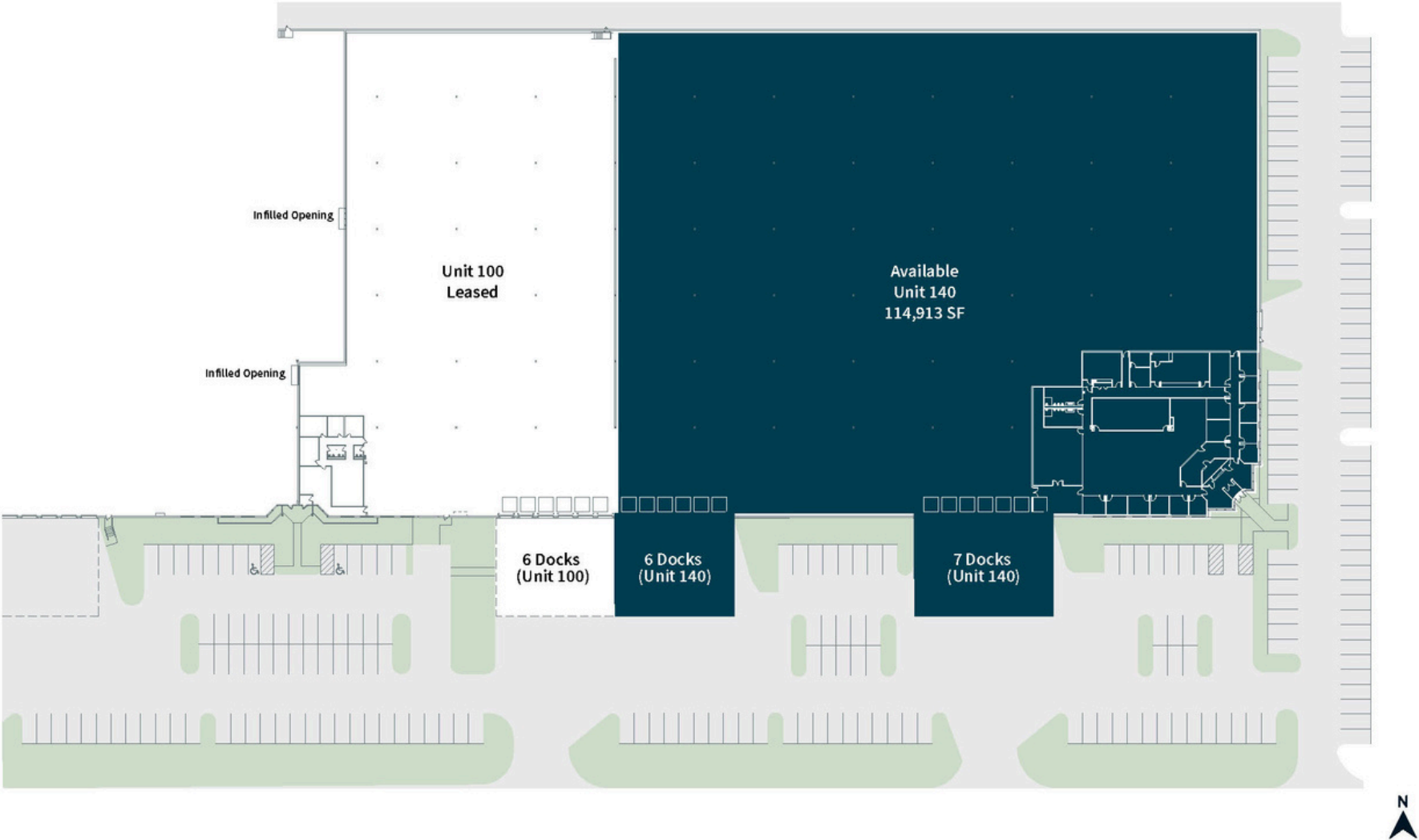


## Property Highlights

- Unit 140, immediately available
- Sublease Expiration: May 31, 2029
- Power 400amps | 480volts
- LED warehouse lighting
- 40' x 48' column spacing
- 2 Big Ass Fans in warehouse
- ESFR Sprinklers
- Close proximity to I-355 at Army Trail Road or North Avenue

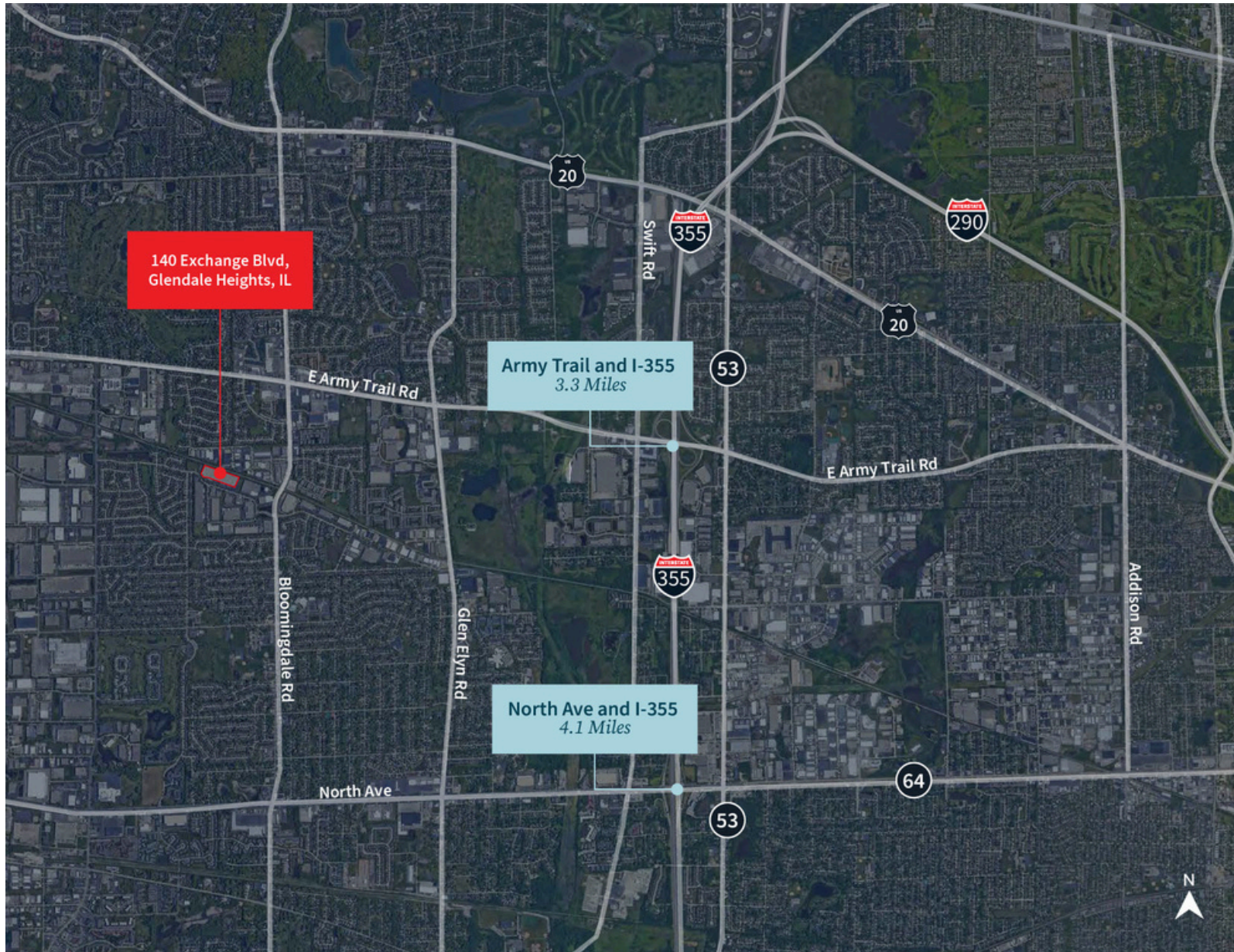
Available Space	114,913 Sq. Ft.
Office	12,719 Sq. Ft.
Clear Height	30'
Loading	13 Ext   1 Drive-in door
Column Spacing	40'x 48'
Sprinkler	ESFR
Parking	142 spaces
Sublease Expiration	May 31, 2029
Taxes	\$1.62 psf

# Site Plan





# Property Location



# Thank you

## About JLL

For over 200 years, JLL (NYSE: JLL), a leading global commercial real estate and investment management company, has helped clients buy, build, occupy, manage and invest in a variety of commercial, industrial, hotel, residential and retail properties. A Fortune 500® company with annual revenue of \$20.9 billion and operations in over 80 countries around the world, our more than 103,000 employees bring the power of a global platform combined with local expertise. Driven by our purpose to shape the future of real estate for a better world, we help our clients, people and communities SEE A BRIGHTER WAY<sup>SM</sup>. JLL is the brand name, and a registered trademark, of Jones Lang LaSalle Incorporated. For further information, visit [jll.com](http://jll.com).

### Phil Reiff

Managing Director  
[phil.reiff@jll.com](mailto:phil.reiff@jll.com)  
630.697.7397

### Robert Tamillo

Managing Director  
[robert.tamillo@jll.com](mailto:robert.tamillo@jll.com)  
847.927.0629

### Tim Lisy

Vice President  
[tim.lisy@jll.com](mailto:tim.lisy@jll.com)  
630.430.4640