



SUITE	RSF	RENTAL RATE	AVAILABLE
SUITE 100	4,777 RSF	\$4.75 FSG	30-DAY NOTICE

Prominent ground floor presence, double door entry, built-in reception desk, 13 offices, conference room, break room, open work area with 12 workstations, 16' exposed ceiling and concrete floors. Move-in ready.

SUITE 150	1,597 RSF	\$4.75 FSG	NOW
-----------	-----------	------------	-----

New Spec Suite/**Move-in Ready INCLUDING FURNITURE!** Two window offices, one interior room, kitchen with stone counter-top and open area. 16' exposed ceiling, custom lighting, concrete floors and rear access to an outdoor seating area. Brand new contemporary furniture.

SUITE 400	10,824 RSF	\$4.75 FSG	NOW
-----------	------------	------------	-----

Full Floor: 19 offices, conference room, large open area, kitchen/lounge, IT/storage room, exposed concrete ceiling and ocean views.

[VIRTUAL TOUR](#)

ARCHITECTURAL DESIGN BY

 SHUBIN + DONALDSON

OWNER/DEVELOPER

 KENNEDY WILSON



**MORE THAN A CAMPUS**  
13274 FIJI WAY, MARINA DEL REY, CA

# 13274 FIJI WAY MARINA DEL REY

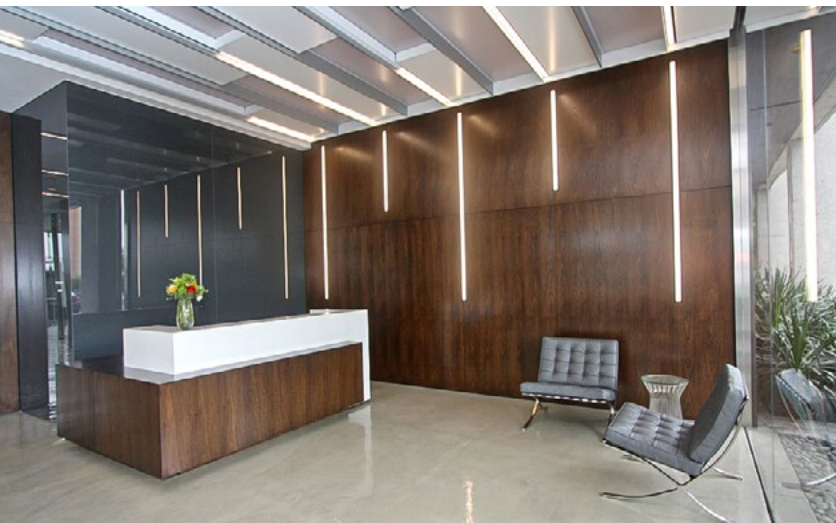
## MORE THAN A CAMPUS

Marina View, a 6-story creative office tower, is located on Fiji Way at Lincoln Blvd., and at the end of the Marina Freeway (90) which is an approximate 3 minute drive to the San Diego Freeway (405). Excellent shopping and dining amenities are located across the street in the Waterside Marina Del Rey, a neighborhood lifestyle shopping center developed by Caruso - Mendocino Farms, Starbucks, Sweetgreens, Sugarfish, Pinkberry, Fresh Brothers, CPK, Shake Shack and Ralphs.

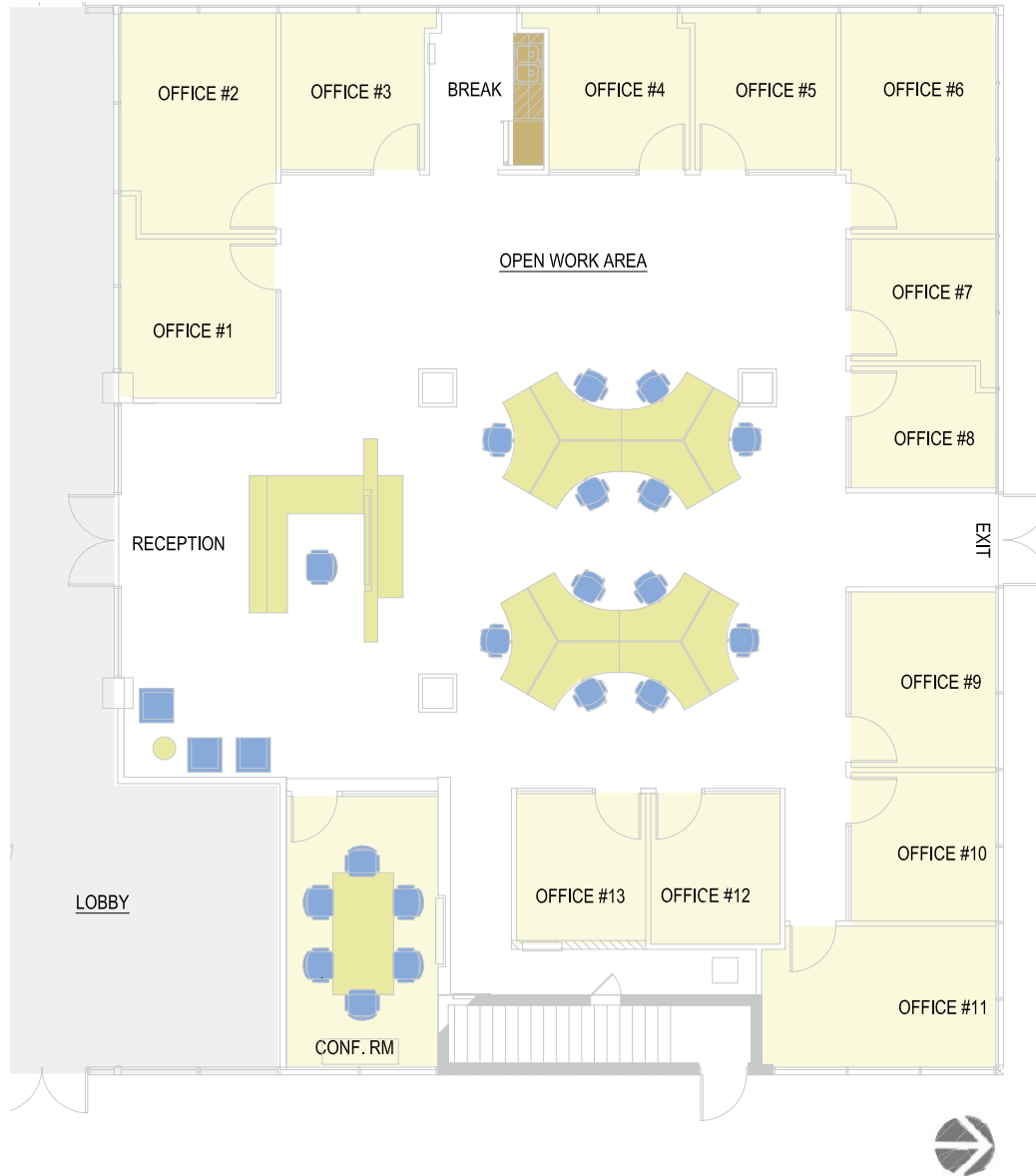
Existing building tenants include: TeleSign, Fisher Capital, Reverage Studios, MLB.com, and Festival Companies.

Directly adjacent are the Ballona Wetlands, a 600-acre nature preserve owned and protected by the State of California, providing excellent unobstructed views overlooking the marina and the wetlands.

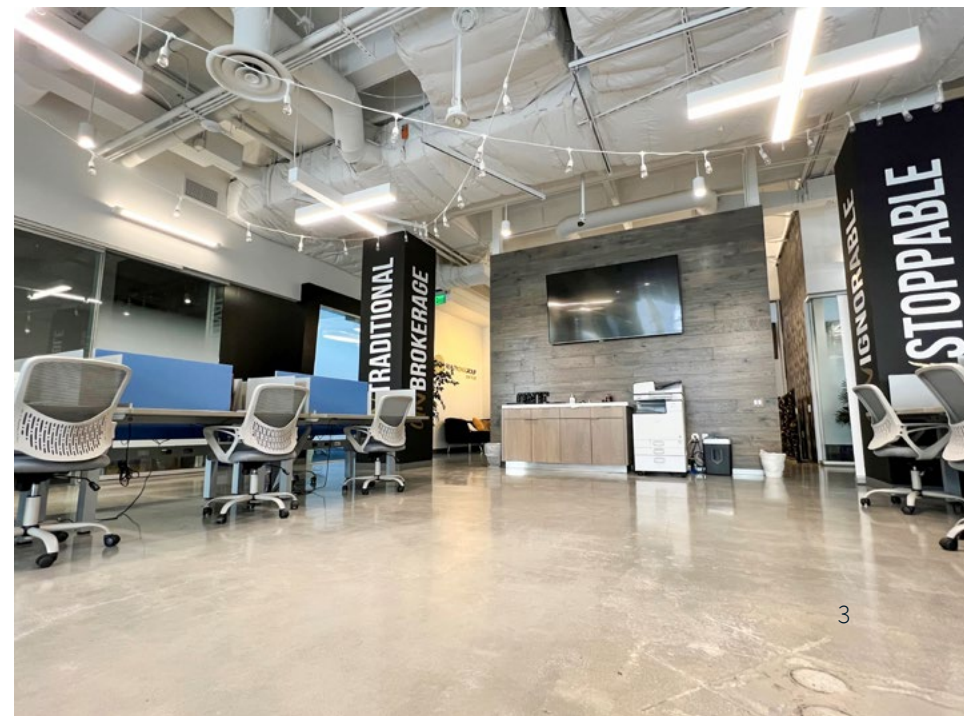
2.7:1,000 onsite parking plus additional nearby. Monthly Parking rate is \$150 unreserved.



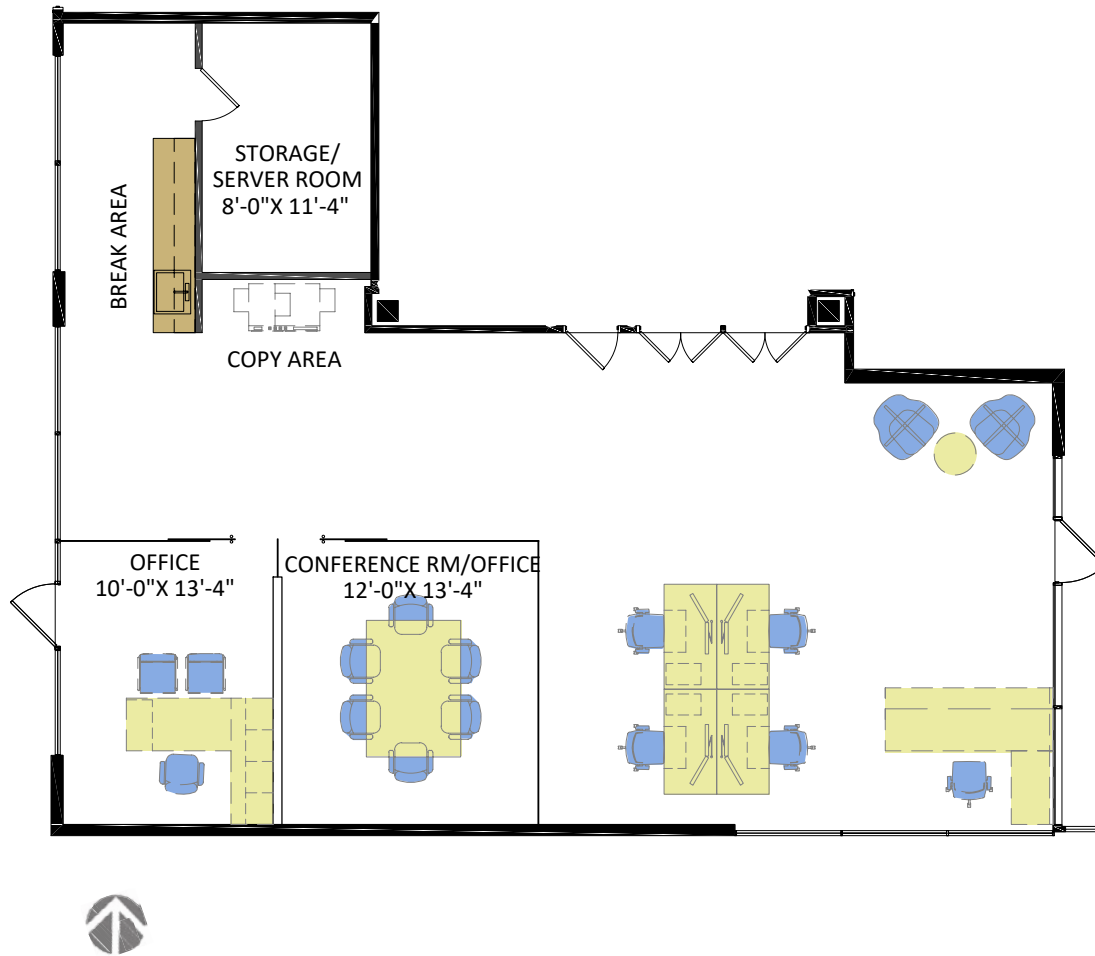
# SUITE 100 - 4,777 RSF



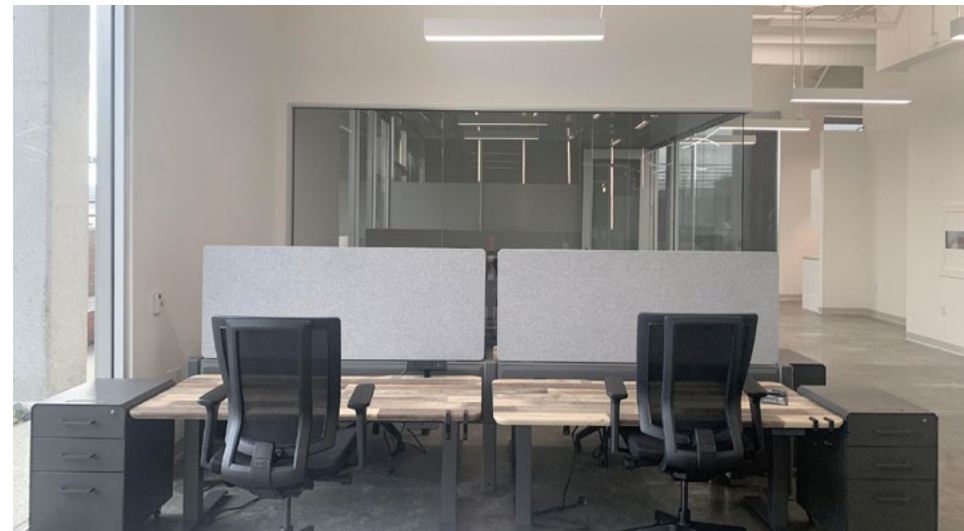
Prominent ground floor presence, double door entry, built-in reception desk, 13 offices, conference room, break room, open work area with 12 workstations, 16' exposed ceiling and concrete floors. Move-in ready.



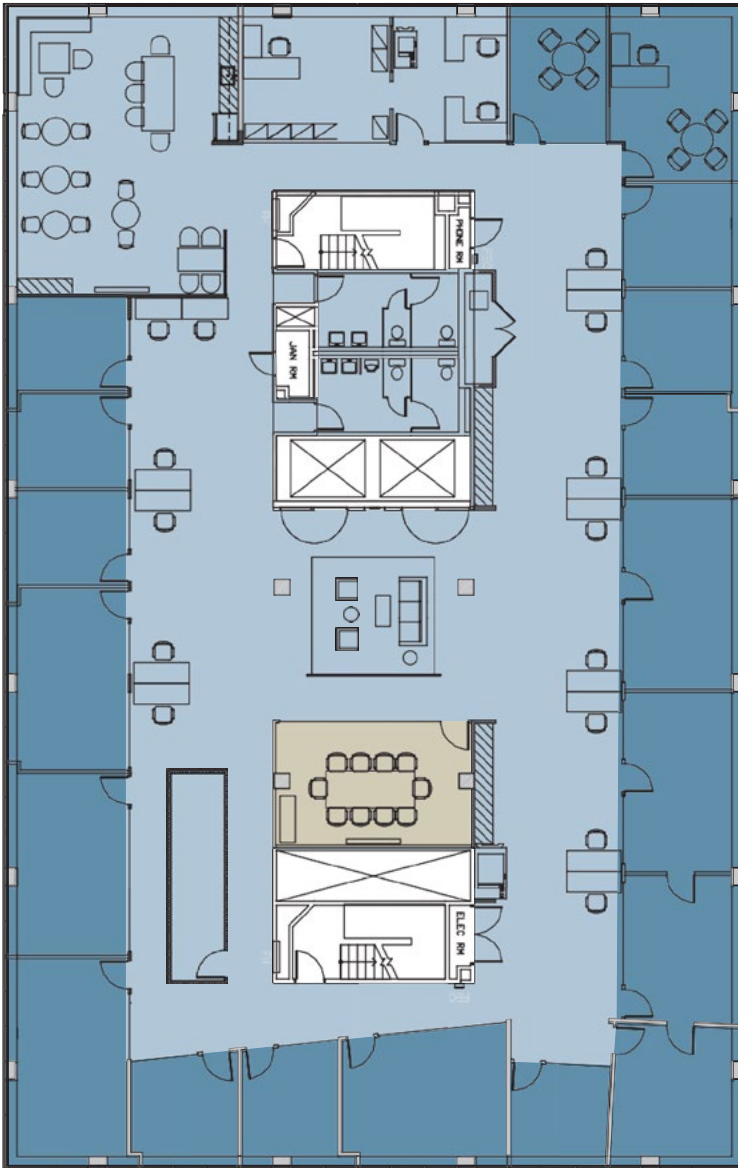
# SUITE 150 - 1,597 RSF



New Spec Suite/Move-in Ready INCLUDING FURNITURE! Two window offices, one interior room, kitchen with stone counter-top and open area. 16' exposed ceiling, custom lighting, concrete floors and rear access to an outdoor seating area. Brand new contemporary furniture.

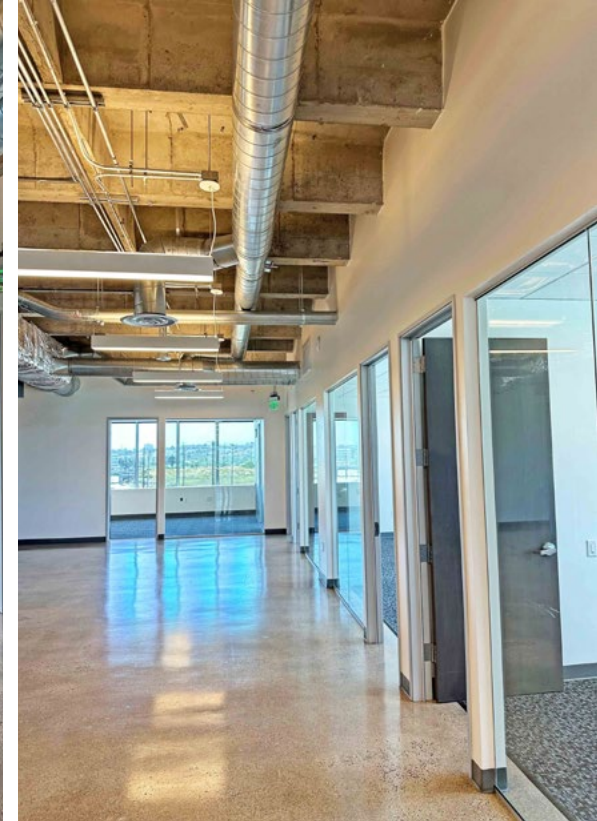


# SUITE 400 - 10,824 RSF



VIRTUAL TOUR

Full Floor: 19 offices, conference room, large open area, kitchen/lounge, IT/storage room, exposed concrete ceiling and ocean views.





FOR LEASING INFORMATION CONTACT:

**GABRIEL BROWN**

[gabe.brown@jll.com](mailto:gabe.brown@jll.com)

+1 310 435 4344

License #01441920



Although information has been obtained from sources deemed reliable, neither Owner nor JLL makes any guarantees, warranties or representations, express or implied, as to the completeness or accuracy as to the information contained herein. Any projections, opinions, assumptions or estimates used are for example only. There may be differences between projected and actual results, and those differences may be material. The Property may be withdrawn without notice. Neither Owner nor JLL accepts any liability for any loss or damage suffered by any party resulting from reliance on this information. If the recipient of this information has signed a confidentiality agreement regarding this matter, this information is subject to the terms of that agreement. © 2025 Jones Lang LaSalle IP, Inc. All rights reserved.