

former bank corner available for lease



535 Seventh Avenue midtown west retail

Southwest corner of Broadway & W. 39th Street - Centrally located between NYC's busiest hubs: **Times Square, Bryant Park, Herald Square, Penn Station & Port Authority**

Size

Ground Floor: 6,710 SF

Frontage

Approx. 100' wraparound

Ceiling Height

Ground Floor: 14'

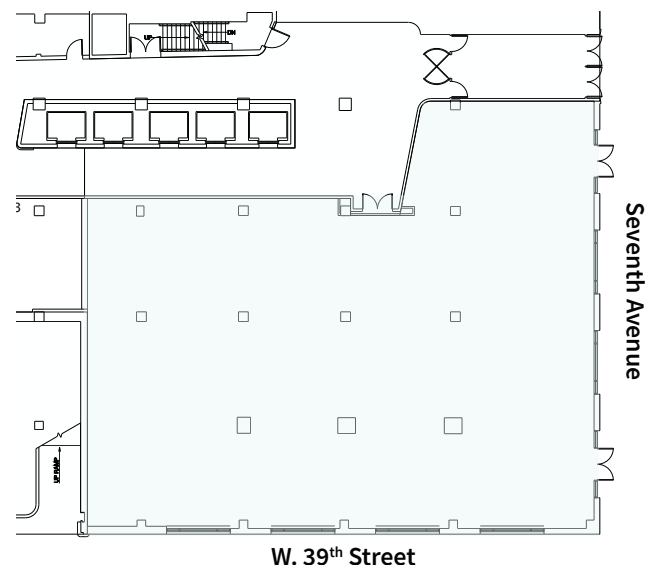
Status

Currently Wells Fargo Bank

Possession

August 2025

- Retail at the base of a 1.1M sf office tower
- Highly-trafficked pedestrian corridor
- Area office tenants include: WeWork, Macy's, Bank of America, HBO, Ann Inc., Bank of China, Salesforce, PVH, Knotel, Ralph Lauren, Signature Bank, Kohl's Corp., Ernst & Young, Victoria's Secret, Verizon, GrubHub, Comcast



Corey J. Zolcinski

212.812.5707 | corey.zolcinski@jll.com

Matin Bikdeli

212.219.2955 | martin.bikdeli@jll.com



535 Seventh Avenue

