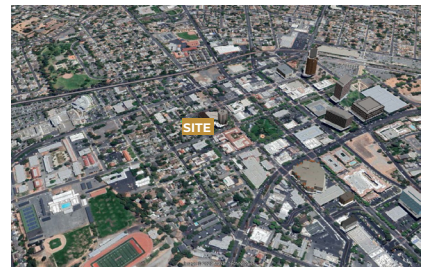


For Sublease



2291 Pacheco St.
Concord, CA

Highlights:

- Medical office building located in the Heart of Downtown Concord
- 1,760 SF on 0.13 acres available immediately
- Sublease expiration: 9/18/2026
- Asking rate: \$3.25 Gross/SF
- Completely expanded and renovated in 2008
- 4 exam rooms, Dr's office, waiting area, restroom, manager's office, breakreadk/kitchen
- On site parking with plenty of street parking for overflow

For more information,
contact:

BOB VANCE
+1 925 944 2152
robert.vance@jll.com
Lic.#: 00971934

TOM WHITELOCK
+1 925 948 1302
thomas.whitelock@jll.com
Lic.#: 01959206

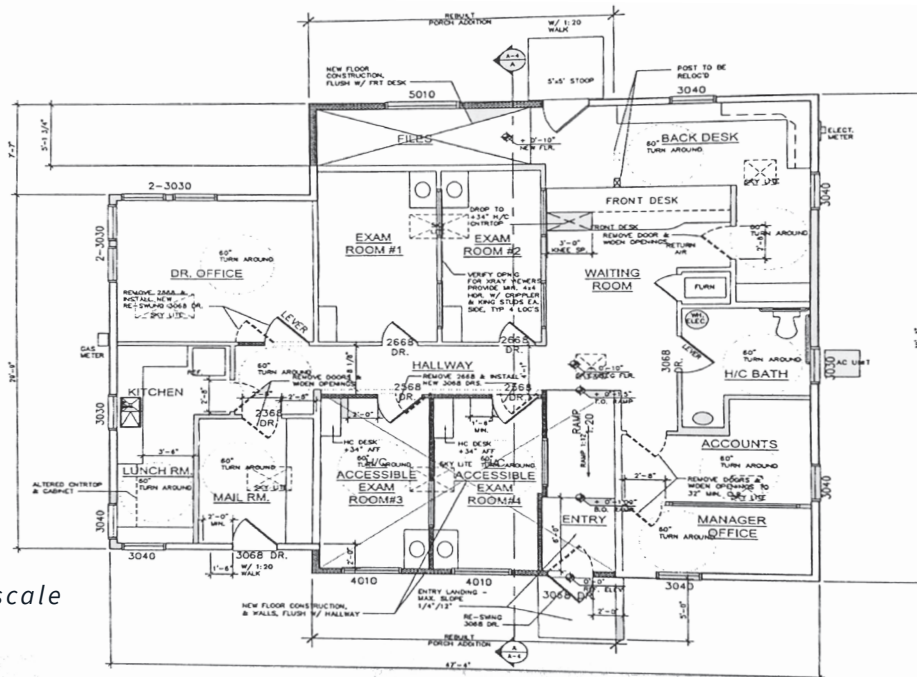
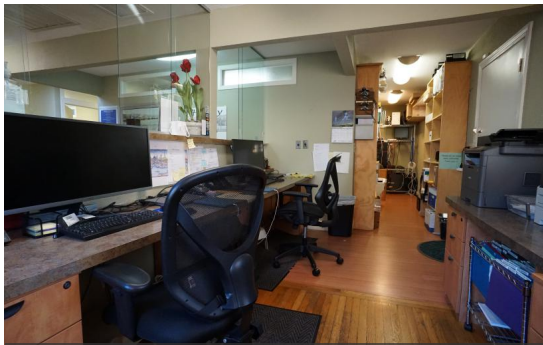
[jll.com](https://www.jll.com)

Jones Lang LaSalle Brokerage, Inc.
License #: CA01856260

Although information has been obtained from sources deemed reliable, neither Owner nor JLL makes any guarantees, warranties or representations, express or implied, as to the completeness or accuracy as to the information contained herein. Any projections, opinions, assumptions or estimates used are for example only. There may be differences between projected and actual results, and those differences may be material. The Property may be withdrawn without notice. Neither Owner nor JLL accepts any liability for any loss or damage suffered by any party resulting from reliance on this information. If the recipient of this information has signed a confidentiality agreement regarding this matter, this information is subject to the terms of that agreement. ©2025. Jones Lang LaSalle IP, Inc. All rights reserved.

For Sublease

2291 Pacheco Street, Concord, CA



Floor plan not to scale

For more information,
contact:

BOB VANCE
+1 925 944 2152
robert.vance@jll.com
Lic.#: 00971934

TOM WHITELOCK
+1 925 948 1302
thomas.whitelock@jll.com
Lic.#: 01959206

jll.com

Jones Lang LaSalle Brokerage, Inc.
License #: CA01856260