



For Sublease

1st Floor Office space available now

Property Highlights:

- 89-acre office park
- Adjacent to I-680
- Impressive lobbies/common areas
- On-site child-care center
- Fitness center
- Conference facility
- Retail shops/restaurants

Sycamore Plaza I

6801 Koll Center Parkway

Pleasanton, CA

For additional information, please contact:

Tom Whitelock

+1 415 917 6525

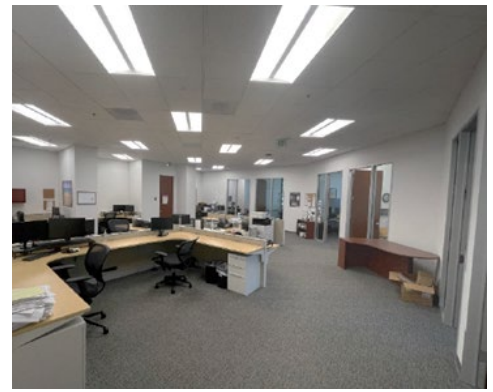
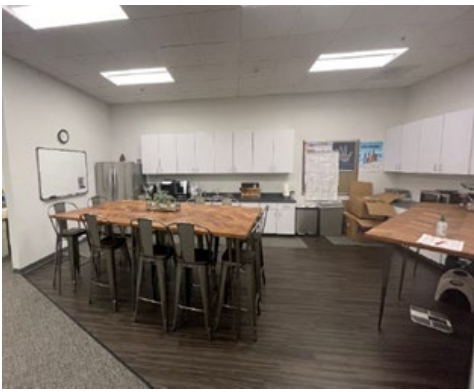
tom.whitelock@am.jll.com

RE Lic #: 01959206

**[Click here to take
Virtual Tour](#)**



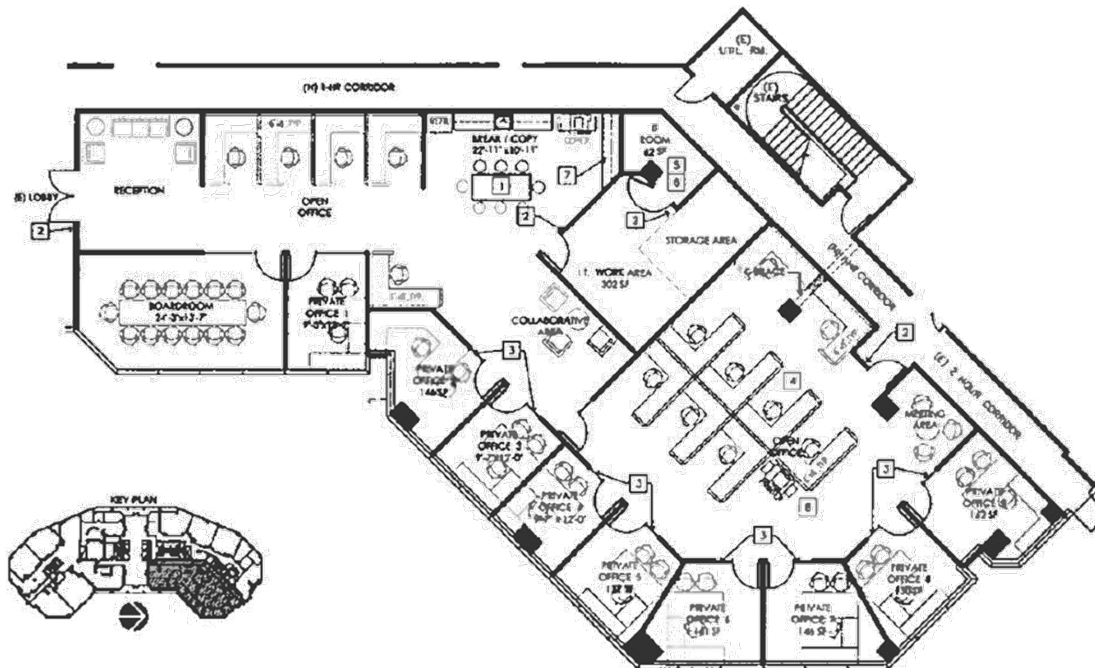
Jones Lang LaSalle Brokerage, Inc.,
CA Real Estate License #01856260



Space Details	
Size:	5,042 SF (1 st floor, Ste.140)
Availability:	Immediately
Term:	LED: April 30, 2026
Rate:	Please inquire with broker

For additional information, please contact:

Tom Whitelock
+1 415 917 6525
tom.whitelock@am.jll.com
RE Lic #: 01959206



Although information has been obtained from sources deemed reliable, neither Owner nor JLL makes any guarantees, warranties or representations, express or implied, as to the completeness or accuracy as to the information contained herein. Any projections, opinions, assumptions or estimates used are for example only. There may be differences between projected and actual results, and those differences may be material. The Property may be withdrawn without notice. Neither Owner nor JLL accepts any liability for any loss or damage suffered by any party resulting from reliance on this information. If the recipient of this information has signed a confidentiality agreement regarding this matter, this information is subject to the terms of that agreement. ©2025. Jones Lang LaSalle IP, Inc. All rights reserved.

