

420 Court Street

Carroll Gardens, Brooklyn
Retail Leasing Opportunity



Northwest Corner of Court Street & 2nd Place

Size

Ground floor: 660-2,336 sf
Lower level: 1,850 sf

Frontage

Up to 80' on Court Street
18' on 2nd Place

Ceiling Heights

Ground floor: 11-12'
Lower level: 9-10'

Possession

Q1 2026

Highlights

- New construction on a prime retail block in a strong residential neighborhood and at the base of a boutique condo building
- One block away from F/G train at Carroll Street, servicing 2.6M riders annually

Neighboring Retailers

Baby Luc's, Court Street Grocers, Breakfast by Salt's Cure, Ven.Space, CVS, East One Coffee Roasters, Chase, Citizens Bank

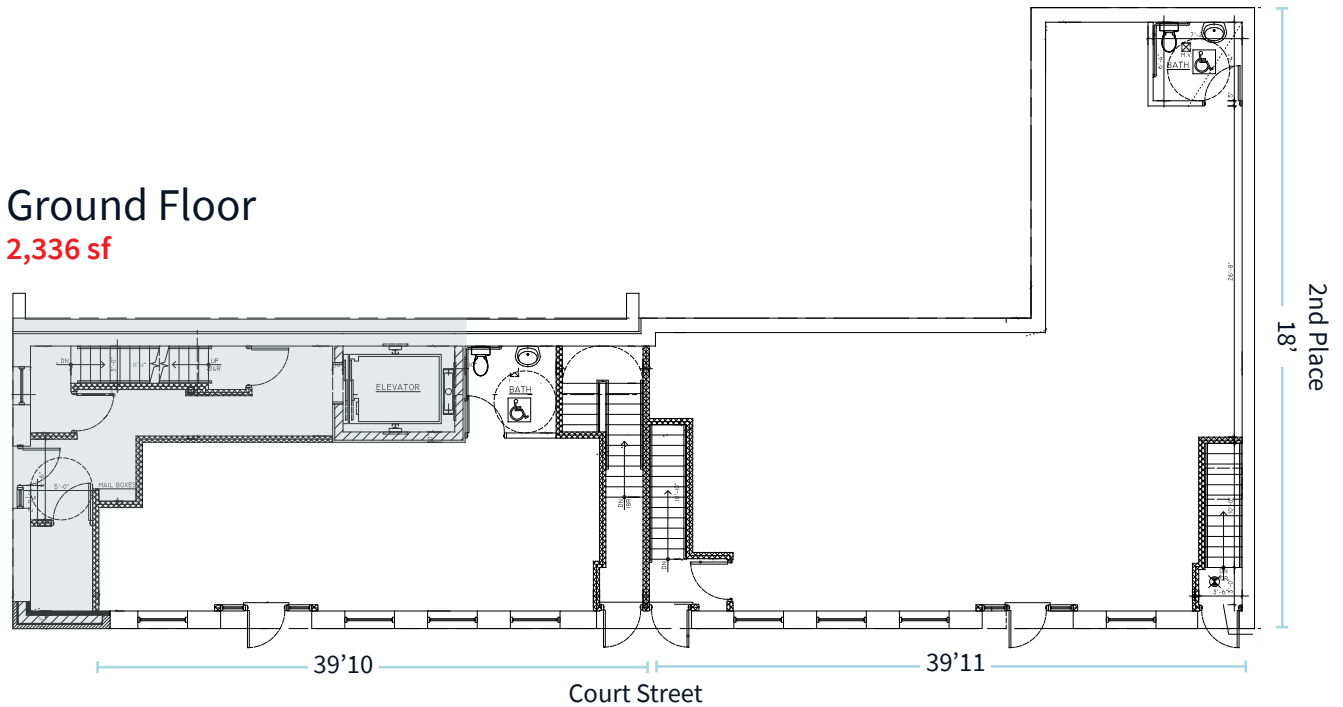
420 Court Street, Brooklyn, NY



COFFEE +

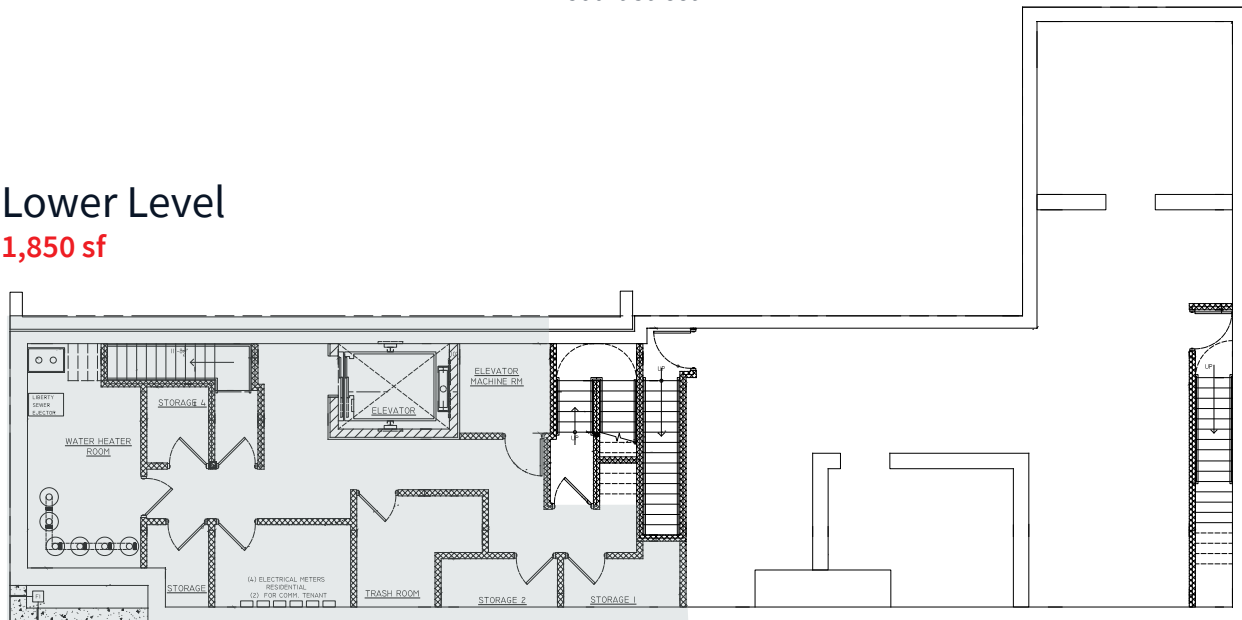
Ground Floor

2,336 sf



Lower Level

1,850 sf



Jones Lang LaSalle Brokerage, Inc. | 330 Madison Avenue New York, NY 10017

DISCLAIMER

Although information has been obtained from sources deemed reliable, neither Owner nor JLL makes any guarantees, warranties or representations, express or implied, as to the completeness or accuracy as to the information contained herein. Any projections, opinions, assumptions or estimates used are for example only. There may be differences between projected and actual results, and those differences may be material. The Property may be withdrawn without notice. Neither Owner nor JLL accepts any liability for any loss or damage suffered by any party resulting from reliance on this information. If the recipient of this information has signed a confidentiality agreement regarding this matter, this information is subject to the terms of that agreement. ©2025. Jones Lang LaSalle IP, Inc. All rights reserved.