

1524 Second Avenue

Upper East Side
Retail Sublease Opportunity



Location

Northeast corner of E. 79th St.

Size

Ground Floor: 8,121 sf

Lower Level: 1,024 sf
(Non-selling)

Total: 9,145 sf

Frontage

105' on Second Avenue

Site Status

Available; formerly Duane
Reade store #14236

Sublease Term

7/31/2034

Asking Rent

Upon request

Comments

- Corner retail opportunity located at the base of a premier 36-story, 538-unit residential tower
- Located in one of NYC's most densely populated neighborhoods with 7-day a week activity
- Direct lease opportunity available with Landlord

Neighboring Co-Tenants

- Chick-fil-A
- Goldfish Swim School
- La Pecora Bianca
- Starbucks
- TD Bank
- Luke's Lobster

Michael Riley

212 812 5901

Michael.Riley@jll.com

Patrick A. Smith

212 812 5888

PatrickA.Smith@jll.com

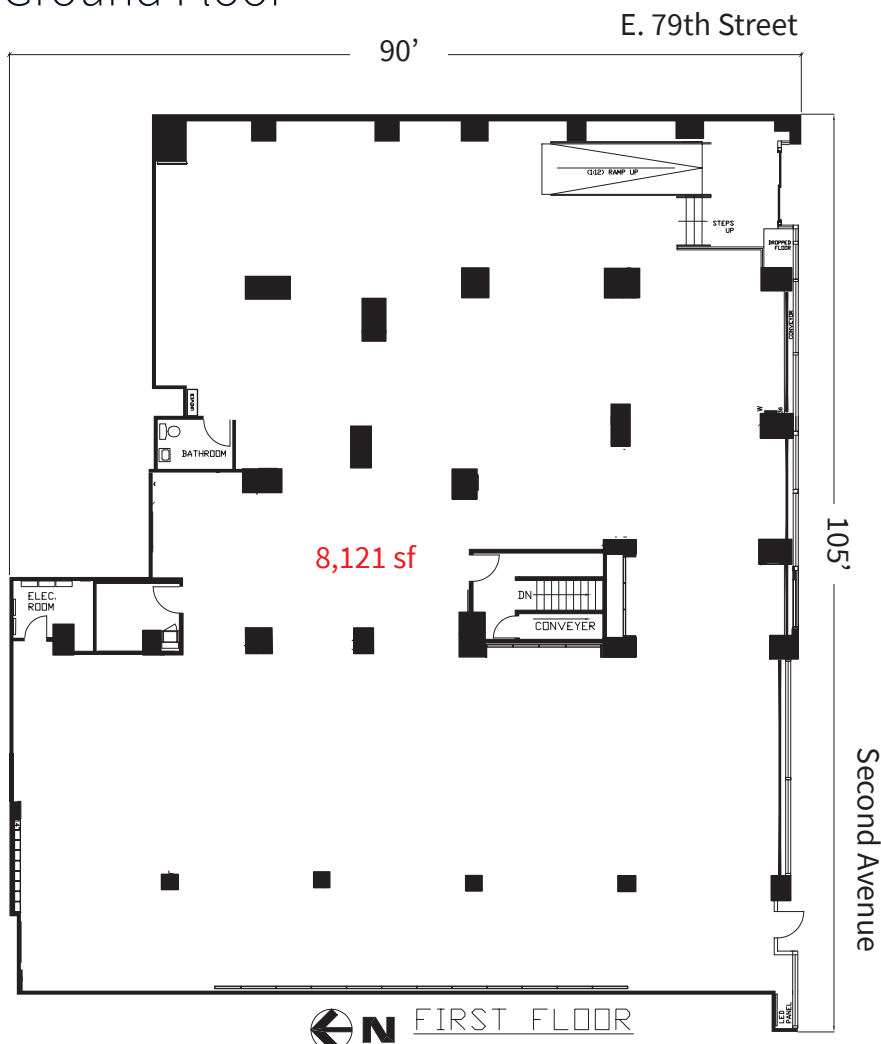
Isabella Burnette

212 376 1874

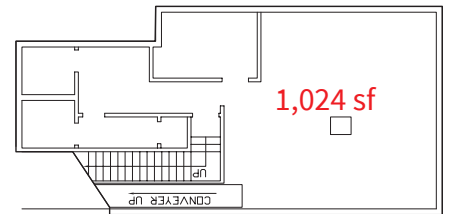
Isabella.Burnette@jll.com



Ground Floor



Lower Level



Floor plans not to scale