

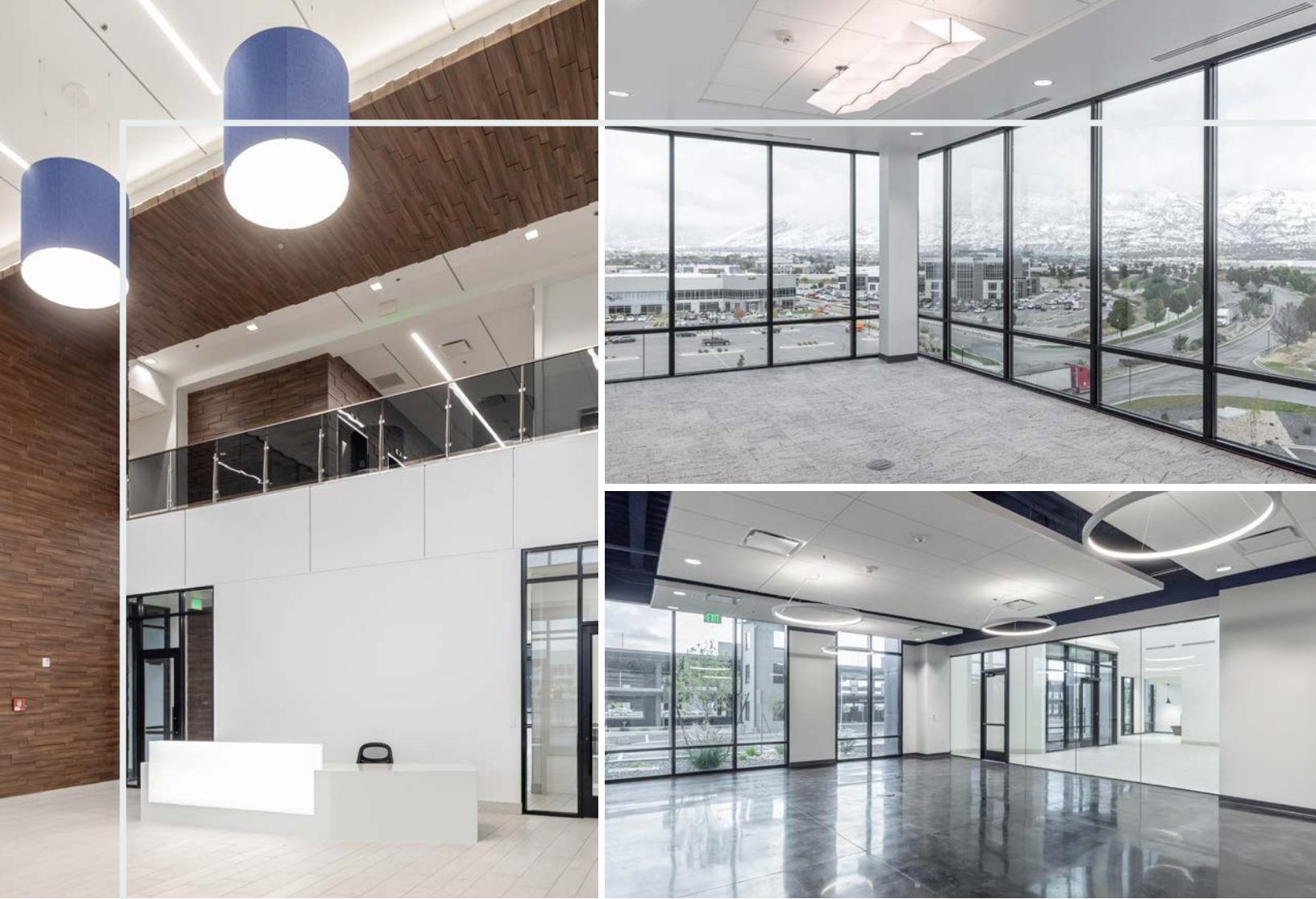
FOR SUBLEASE
CORPORATE
HEADQUARTERS
OPPORTUNITY

FURNITURE
PACKAGE AVAILABLE



WILSON
TECH 5

2745 W 600 N, Lindon, UT 84042



CORPORATE HQ OPPORTUNITY RAISE YOUR STANDARDS

89,437 RSF
total available

~30,000 RSF
floors 1-3

\$25.00/RSF
sublease rate

CLASS A
brand new building

NOW
availability

7/1,000 SF
parking ratio
(dedicated structure)

**BUILDING
CROWN
SIGNAGE**

**INCREDIBLE
MOUNTAIN
VIEWS**

**IMMEDIATE
ACCESS OFF
EXIT 275**



BEST IN CLASS **MECHANICAL SYSTEMS**

- » Over 20 HVAC zones per floor
- » HVAC includes ionizers on each unit and MERV 13 filters
- » Fully remote HVAC control system
- » 1.5-Megawatt generator
- » 6 garage EV charging stations and a spare underground conduit in place for 4 additional ones if needed
- » Automatic flush toilets and sinks - hardwired not battery operated

WT5



NEXT LEVEL AMENITIES

6 pickleball courts

Fitness center with lockers and showers

6 EV charging stations

Dedicated coffee/smoothie bar area

4 training rooms

Shipping room with dedicated external access

2 breakout kitchen areas per floor

Glass fronts for all offices, conference
rooms, and quiet rooms

Dedicated IT suite on the 3rd floor

2 large storage rooms per floor

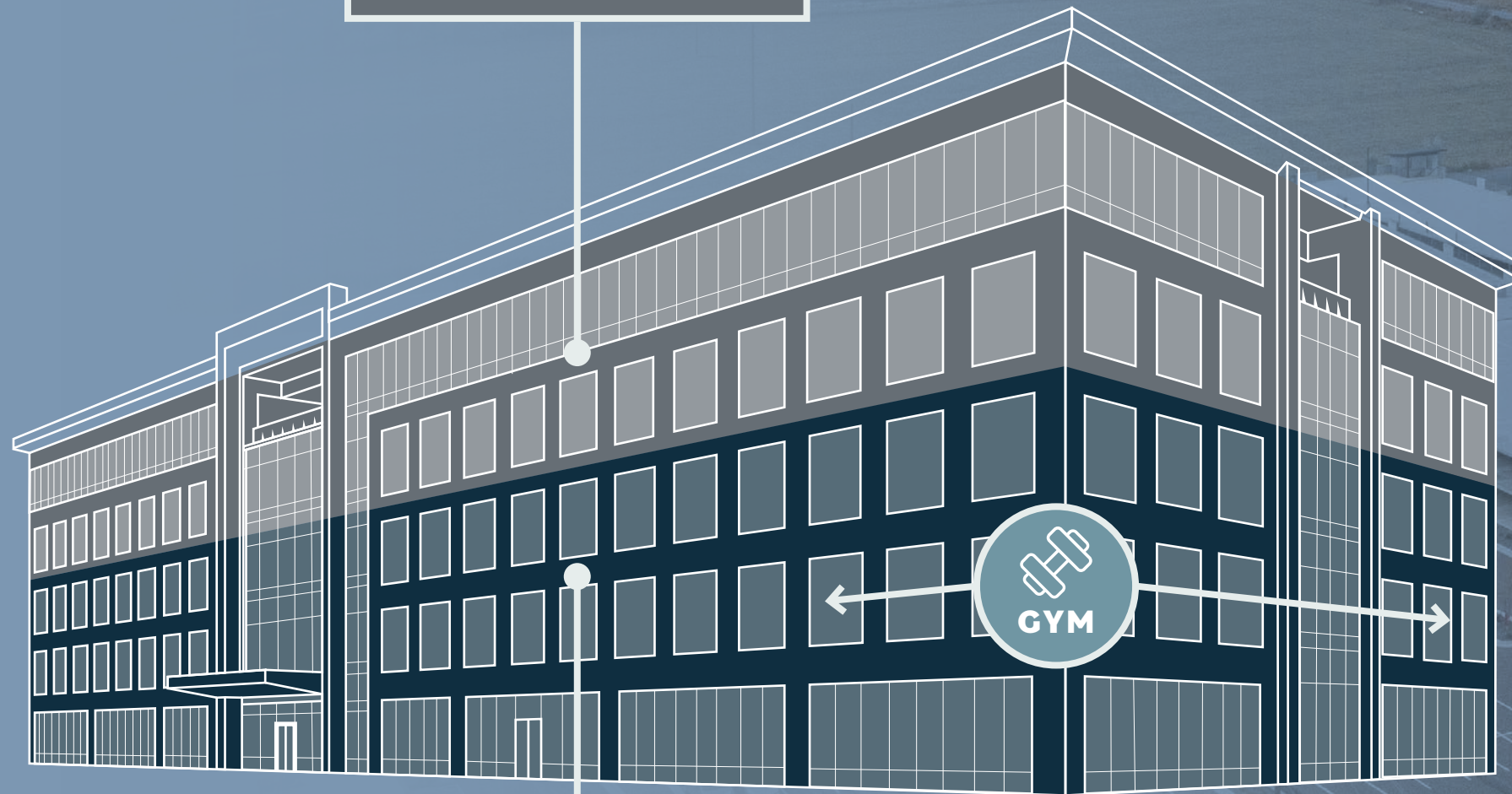
Key card access on the front doors
and elevators

Full-service kitchen that can easily
accommodate 1500 people a day

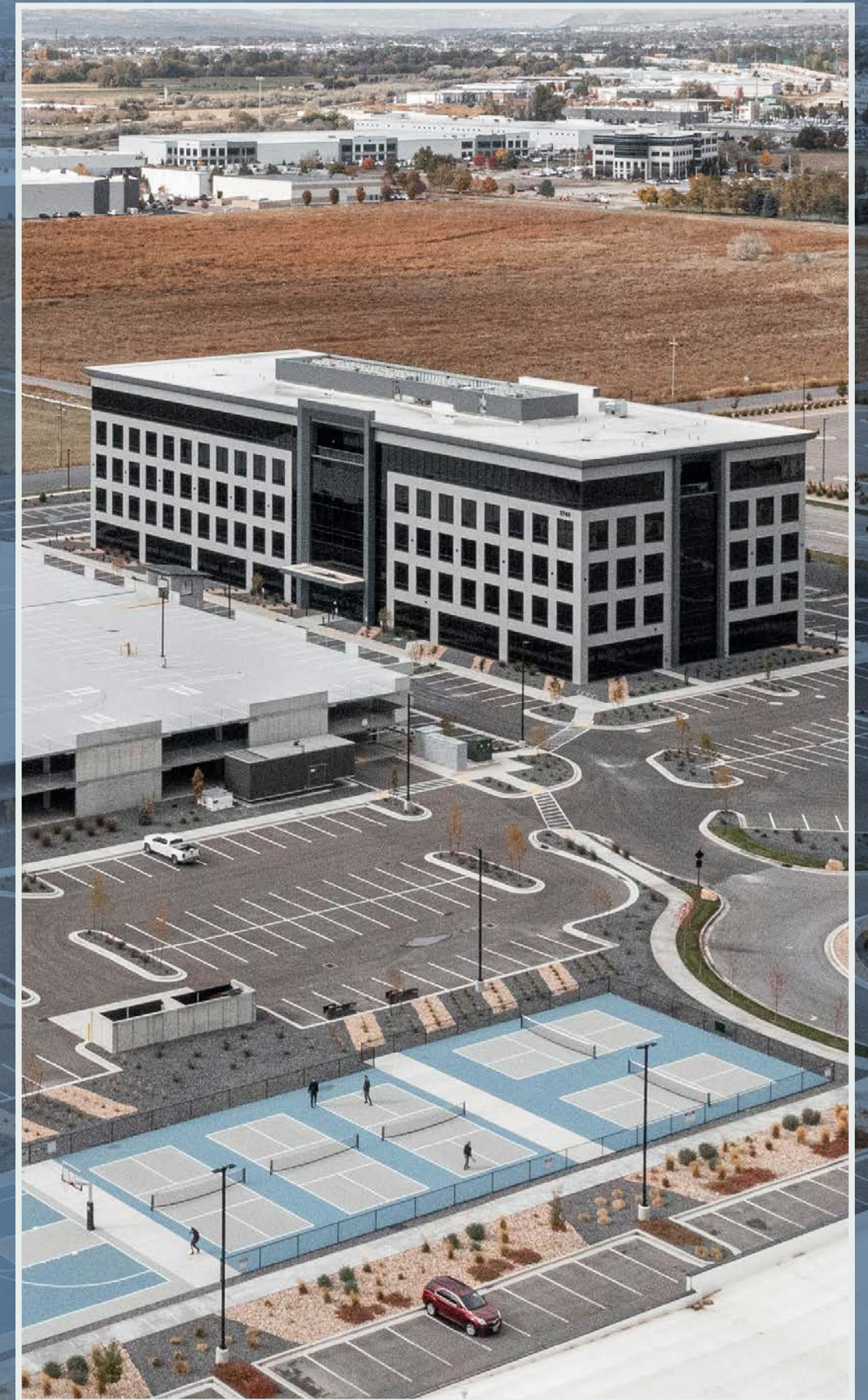


AVAILABILITY

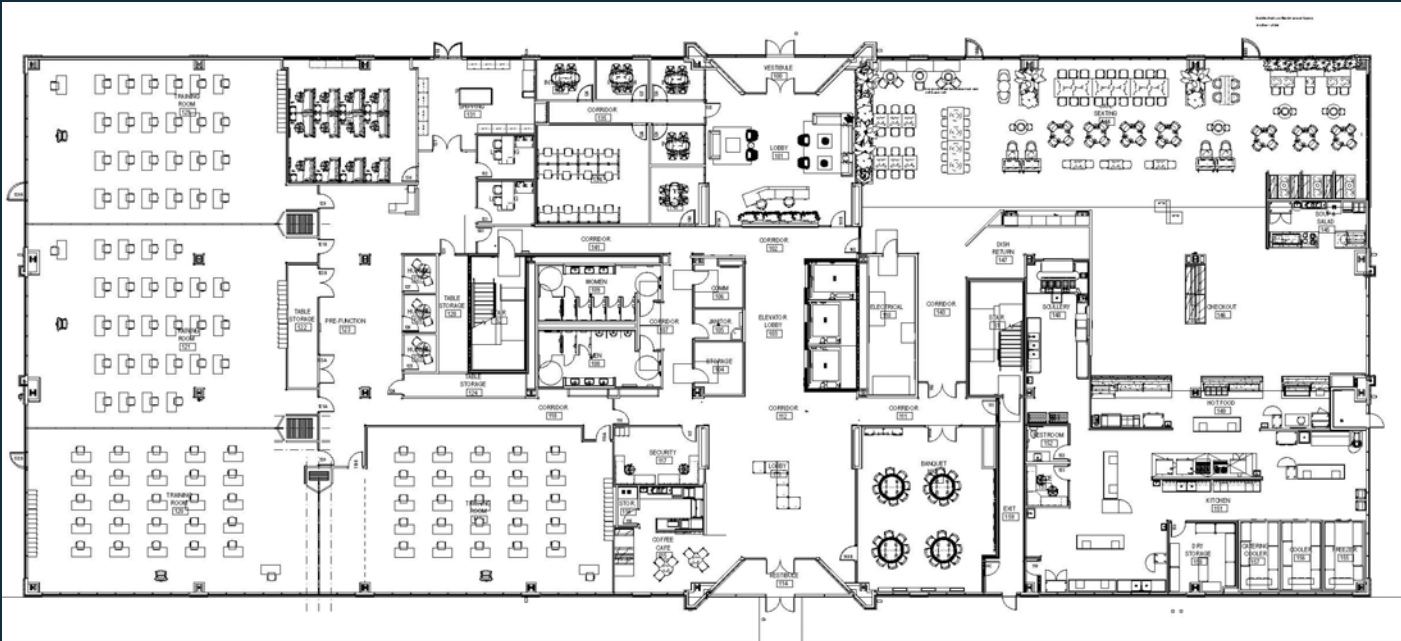
SUBLEASED



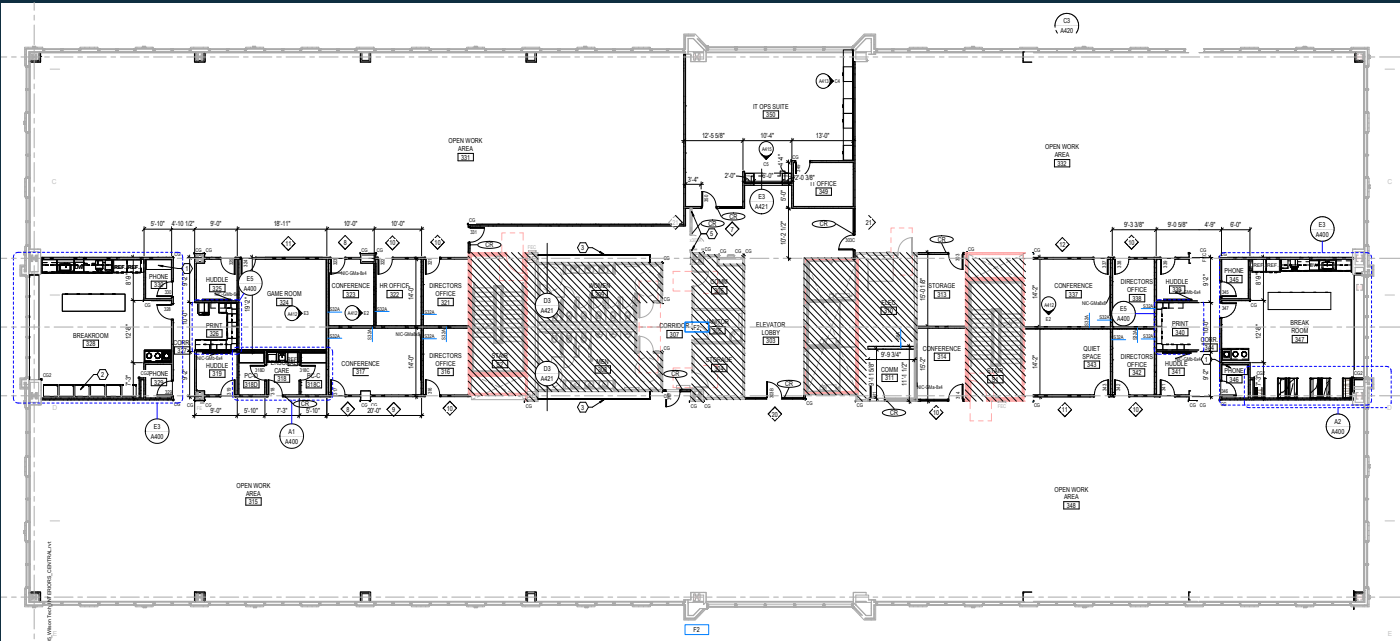
AVAILABLE SUBLEASE



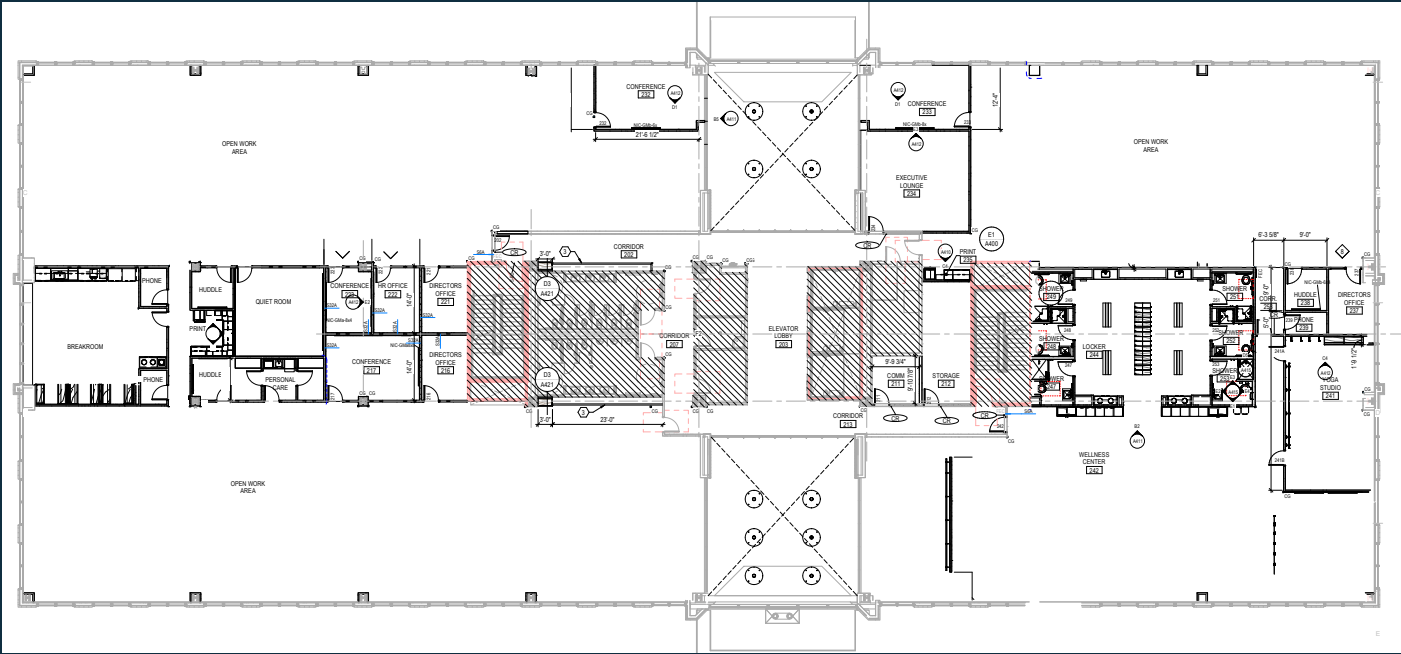
FLOOR PLANS



FLOOR 1 | 28,659 RSF *furniture not included



FLOOR 3 | 31,688 RSF



FLOOR 2 | 29,090 RSF

FLOOR 2 | MATTERPORT
[Click Here](#)



LOCATION



AMENITIES

- | | |
|----------------------------------|-----------------------------------|
| 1. American Fork Hospital | 10. Firebird Pizza & Pasta |
| 2. Discovery (Manila) Park | 11. Chubby's Cafe Pleasant Grove |
| 3. Mi Ranchito AF | 12. Battle Creek Falls Trail Head |
| 4. Los Aribertos Mexican Food | 13. Purple Turtle |
| 5. Grove Creek Canyon Trail Head | 14. R&R BBQ |
| 6. Kitchen Eighty-Eight | 15. The Holy Grill And Bar |
| 7. Thai House Cuisine | 16. Haunted Forest |
| 8. Cravings Bistro | 17. Marley's Gourmet Sliders |
| 9. Evermore Park | |

DRIVE TIMES

 **PROVO, UT**
15 MINUTES

 **DOWNTOWN SLC**
30 MINUTES

 **SLC AIRPORT**
33 MINUTES



DAVID NIXON
+1 801 456 9518
david.nixon@jll.com

JILLIAN JOHNSON HANKS
+1 801 456 9517
jillian.johnson@jll.com