

# 1634 Eye St NW

## Washington, DC



**Prime small shop lease opportunity on Farragut Square**

### An excellent retail opportunity

- 605 SF inline space on ground floor with 956 additional SF on lower level
- Adjacent to Farragut West Metro (20,348 RPD) and one block from Farragut North Metro (22,184 RPD)
- 1,318 hotel rooms within three blocks
- 27,627,784 SF of office space within three blocks

### Nearby retail



For more information,  
please contact:

Andy Corno  
+1 202 719 6137  
[andy.corno@jll.com](mailto:andy.corno@jll.com)

Thomas Jackman  
+1 202 719 5624  
[thomas.jackman@jll.com](mailto:thomas.jackman@jll.com)



## Surrounding area retail

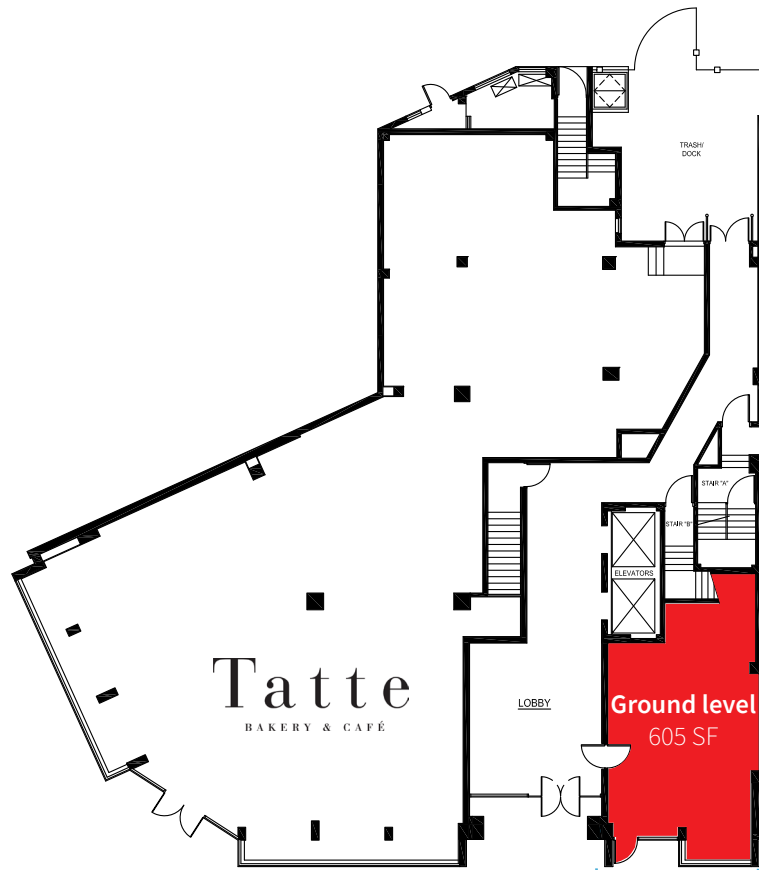


## Demographics from subject site

	.25 mi	.5 mi	1 mi
Population	233	7,746	61,460
Average HH Income	\$112,678	\$123,028	\$176,111
Households	116	3,035	34,507
Employees	42,855	141,257	292,160
Median Age	32	26	33

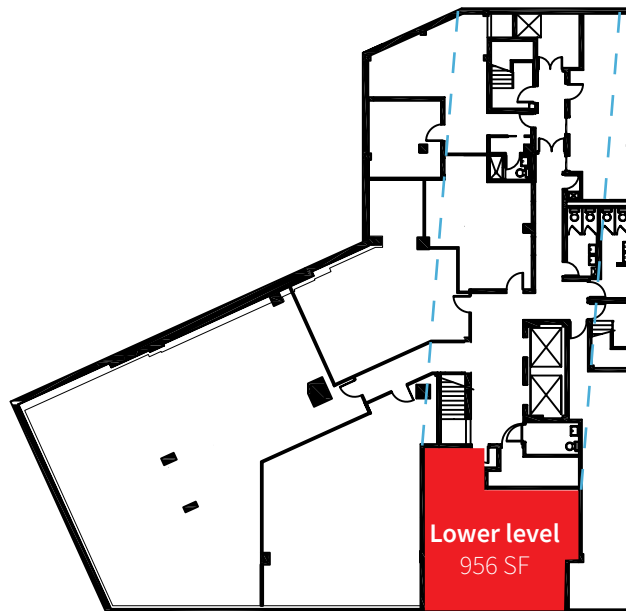
# The space

Connecticut Ave NW (4,300 VPD)



Ground floor plan

Eye St NW (15,300 VPD)



Lower level plan





# 1634 Eye St NW

*An excellent retail opportunity on Farragut Square*

**For more information,  
please contact:**

---

**Andy Corno**

**O:** +1 202 719 6137

**M:** +1 301 520 2620

*[andy.corno@jll.com](mailto:andy.corno@jll.com)*

**Thomas Jackman**

**O:** +1 202 719 5624

**M:** +1 301 580 1512

*[thomas.jackman@jll.com](mailto:thomas.jackman@jll.com)*

