

For lease

±6,654 SF office/warehouse space

1234 Hanley Industrial Ct., Brentwood MO 63144



Property specifications

Available space: 6,654 SF office/warehouse

Office: 3,200 SF office finish

Drive-ins: 4 drive in doors
(1-14'x12' and 3 - 10x10)

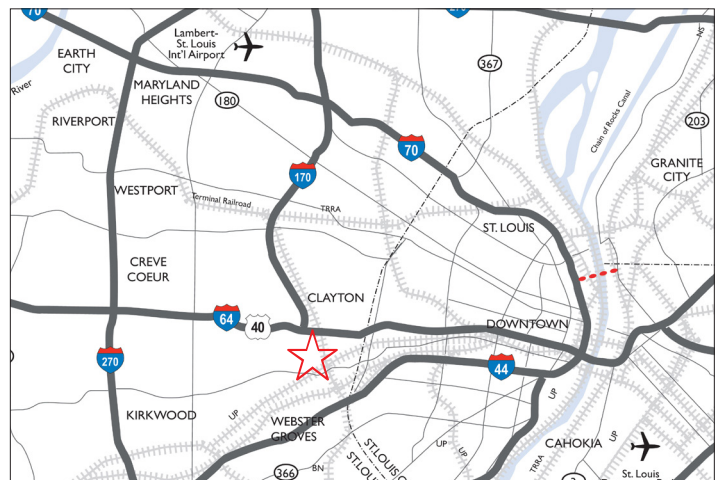
Clear height: 16' clear in warehouse

Drains: Floor drain in warehouse

Parking: Abundant parking

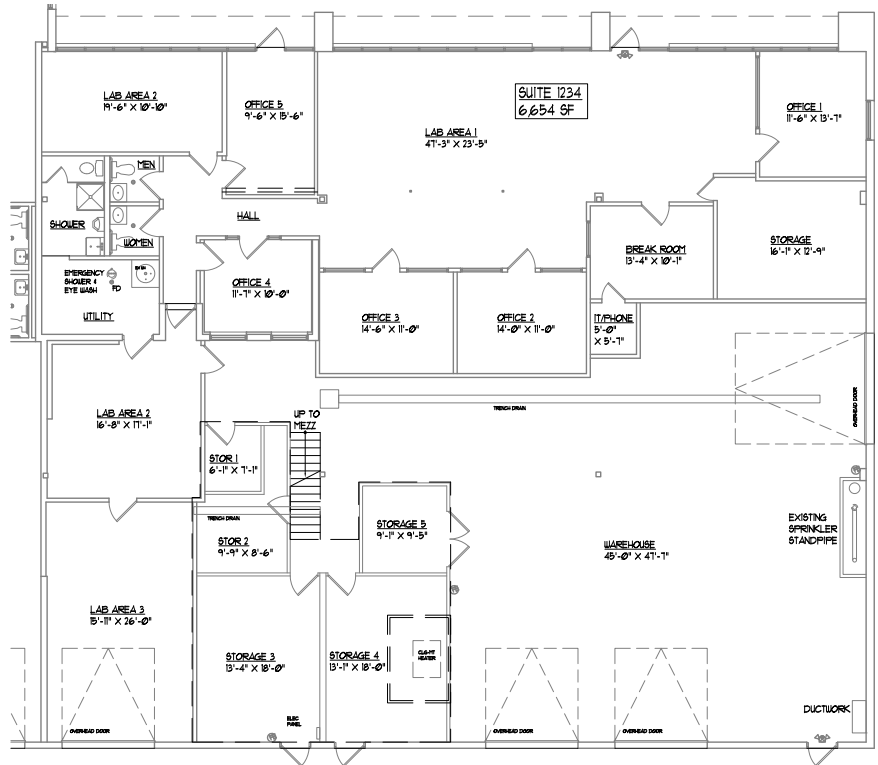
Access: Great highway access

Lease rate: Please contact broker



Amenities and advantages

This versatile property offers 6,654 SF of combined office and warehouse space, featuring 3,200 SF of finished office area. The warehouse boasts 16' clear height and is equipped with four drive-in doors, including one 14'x12' and three 10'x10' entries, as well as a convenient floor drain. The facility provides abundant parking and enjoys excellent highway access, making it ideal for various business operations.



6k+

Square feet space

3k+

Square feet office

16'

Clear height

4

Drive-ins

Prime location with easy accessibility

Conveniently situated in Brentwood, this property offers easy access to major transportation routes, including I-64 and I-170. Its central location provides excellent connectivity to various destinations, making it highly accessible.



Will Meehan
Senior Vice President
+1 314 368 6201
will.meehan@jll.com

jll.com/st-louis

Jones Lang LaSalle Americas, Inc., a licensed real estate broker in 48 states | **DISCLAIMER** Although information has been obtained from sources deemed reliable, neither Owner nor JLL makes any guarantees, warranties or representations, express or implied, as to the completeness or accuracy as to the information contained herein. Any projections, opinions, assumptions or estimates used are for example only. There may be differences between projected and actual results, and those differences may be material. The Property may be withdrawn without notice. Neither Owner nor JLL accepts any liability for any loss or damage suffered by any party resulting from reliance on this information. If the recipient of this information has signed a confidentiality agreement regarding this matter, this information is subject to the terms of that agreement. ©2023. Jones Lang LaSalle IP, Inc. All rights reserved.