

# 8220 NORTHCREEK DRIVE

KENWOOD, OH

50-100K SF class A office site  
for lease or sale on 2.42 AC

CLC<sub>RD</sub>US  
PARTNERS





# PROPERTY OVERVIEW



Class A office site



50,000 – 100,000 SF



Situated on 2.42 AC



Located in amenity-rich Kenwood

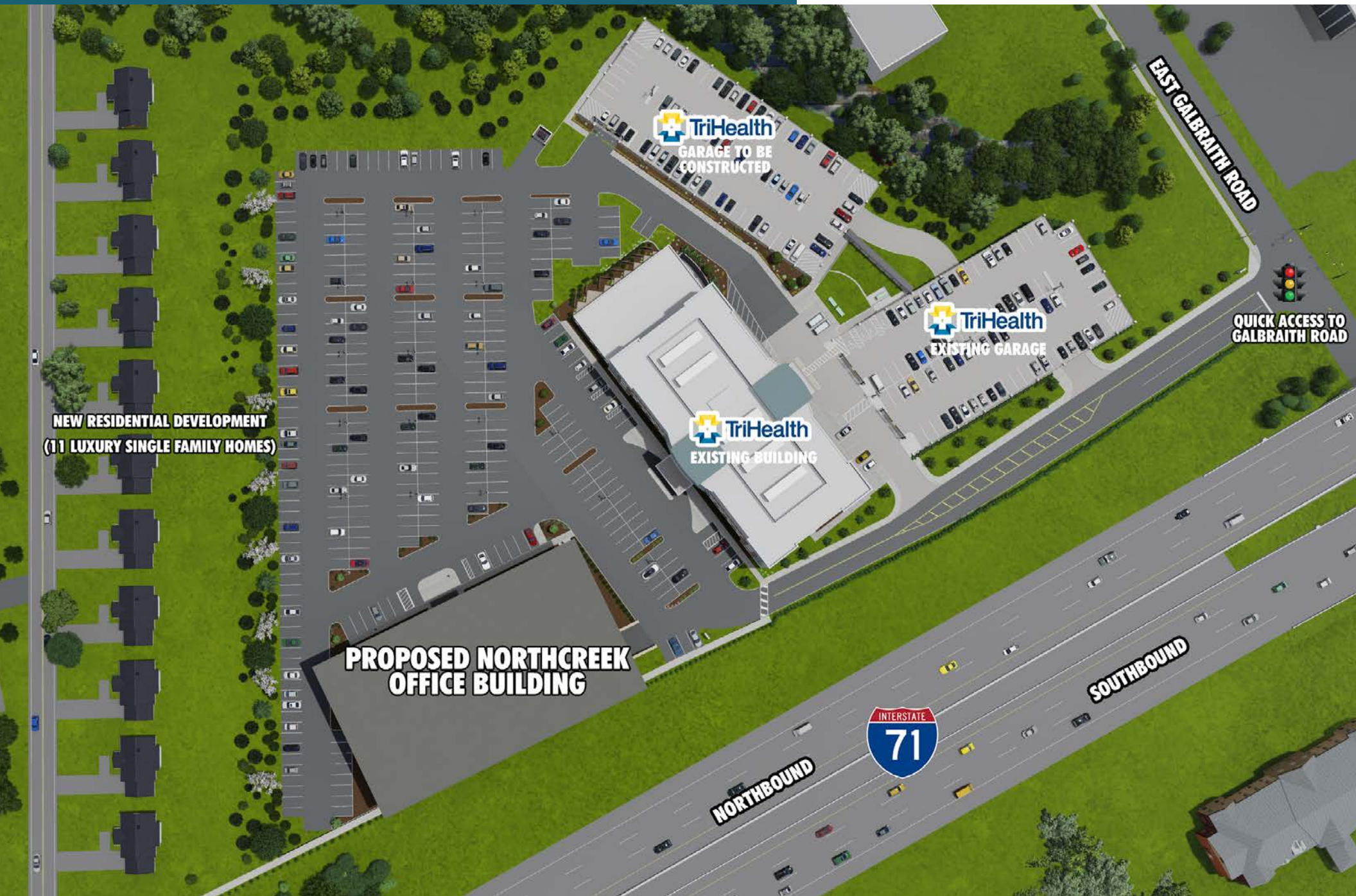


Visibility and access to I-71

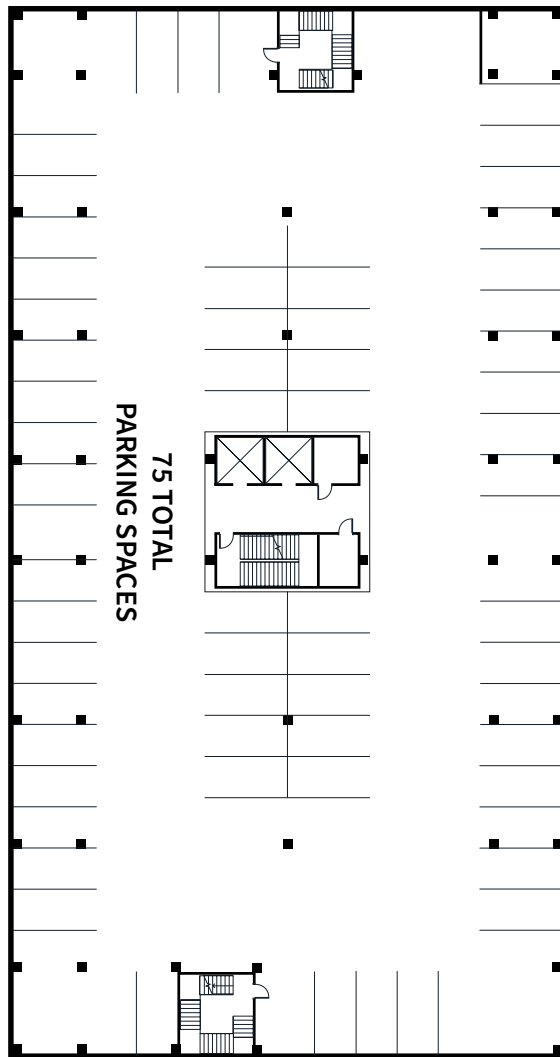




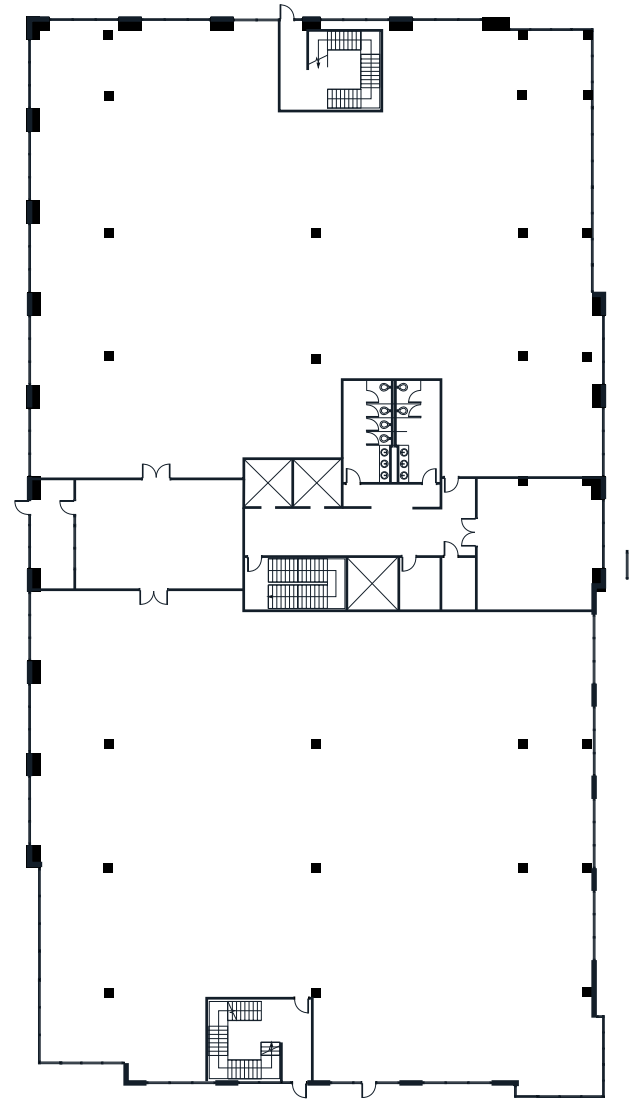
# SITE PLAN



# FLOOR PLAN

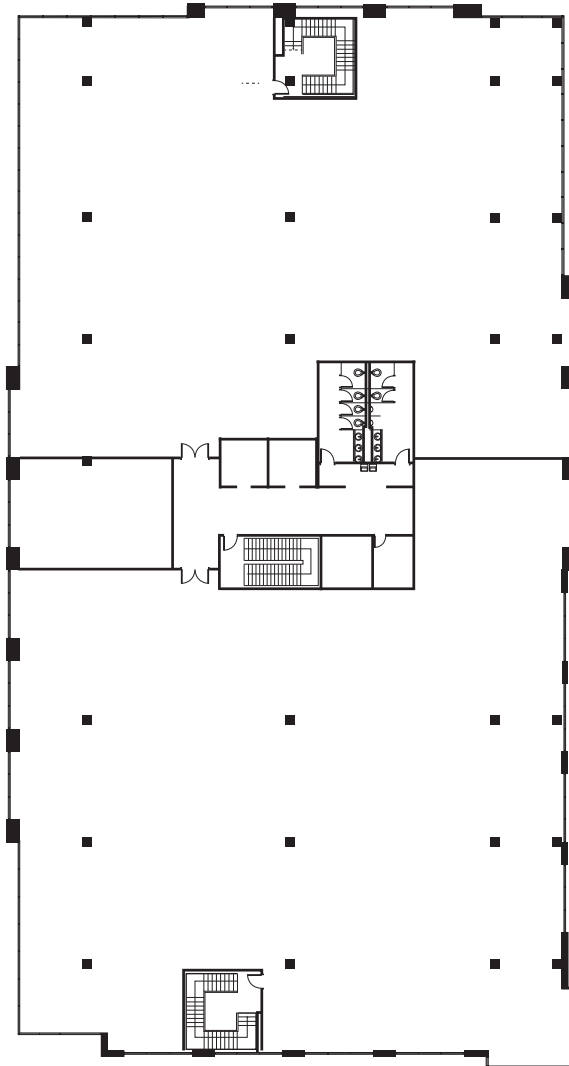


LOWER LEVEL GARAGE PLAN

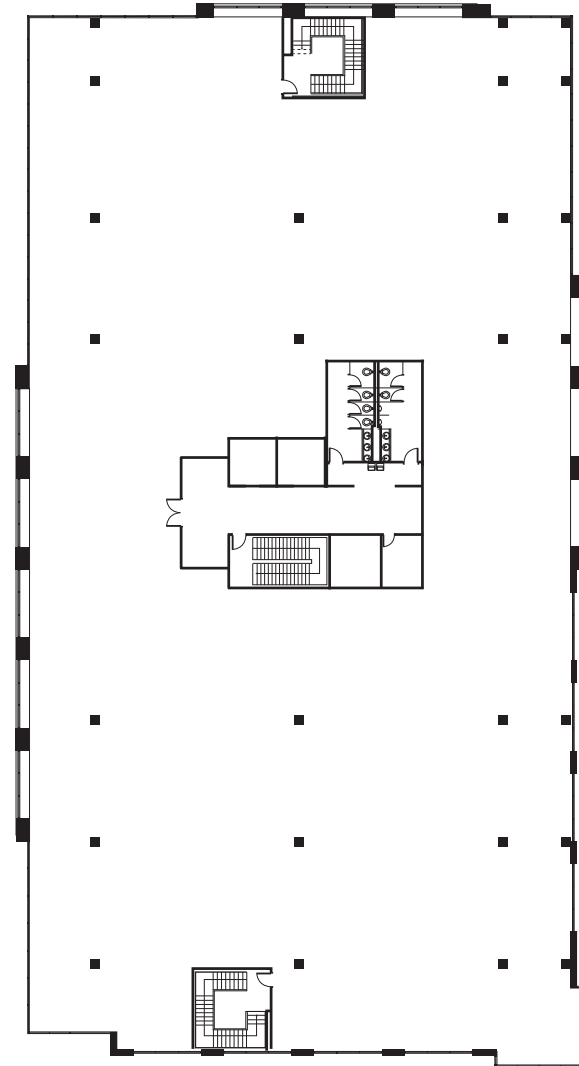


FIRST FLOOR PLAN

# FLOOR PLAN



SECOND FLOOR PLAN



THIRD AND FOURTH PLAN



# CONVENIENT KENWOOD LOCATION

The Jewish Hospital  
MERCYHEALTH

8220  
NORTHCREEK DRIVE

MAGGIANO'S Dillard's macys  
LITTLE ITALY  
NORDSTROM The Cheesecake Factory Apple  
POTTERY BARN

KENWOOD ROAD

KENWOOD PLACE

KENWOOD TOWNE CENTER

ME Massage Envy charles SCHWAB  
CLUB PILATES ORVIS  
DEWEY'S PIZZA

MONTGOMERY ROAD

US  
22

ihop BIBIBOP THE FRESH MARKET  
TJ-maxx Michaels POTBELLY  
DICK'S STAPLES Starbucks  
five BELOW

KENWOOD SQUARE

US  
71

CHIPOTLE MEXICAN GRILL FIRST WATCH TITANY JONES  
Embers Orangetheory Chuy's  
CBank

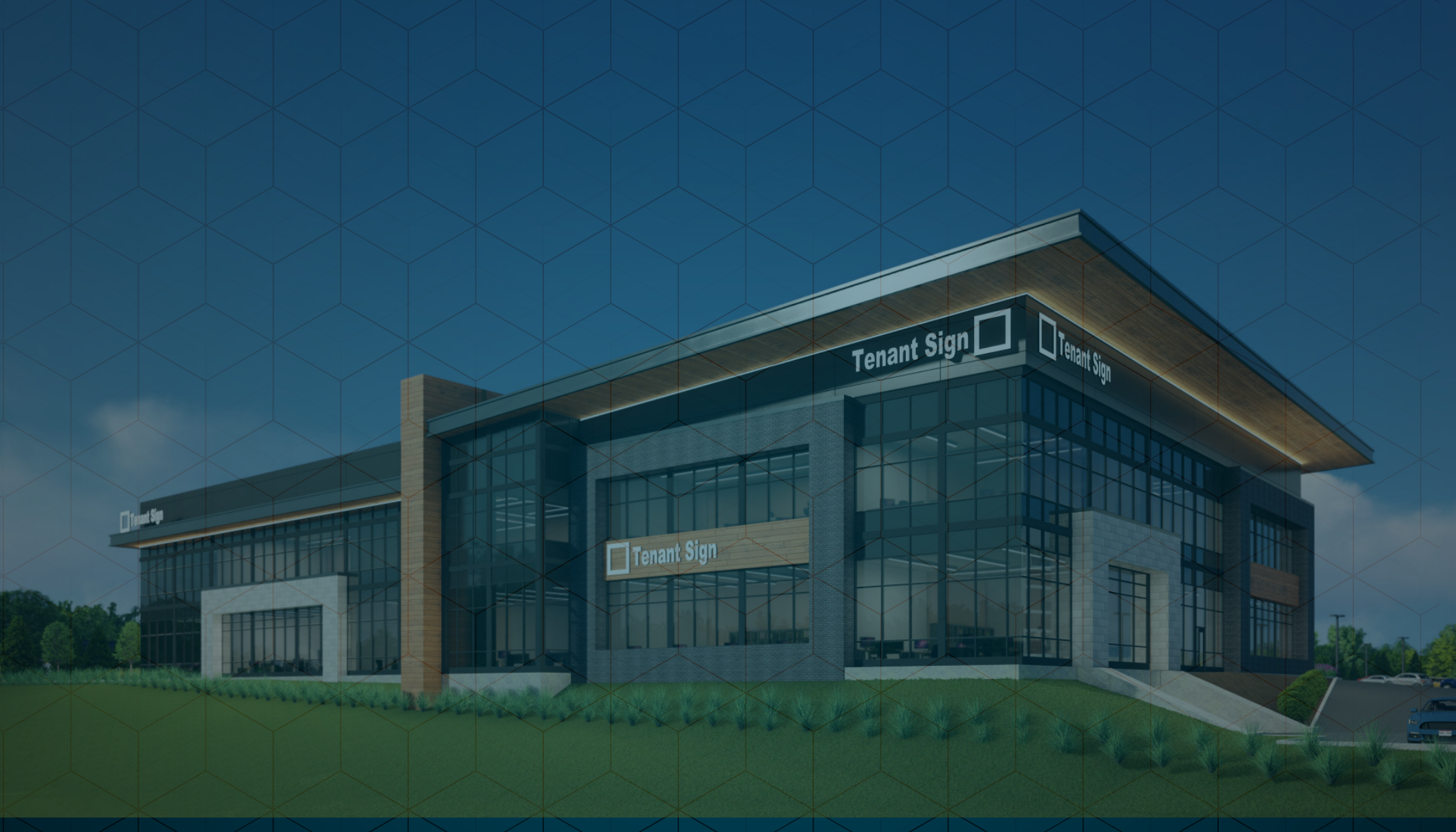
PartyCity PNC Panera BREAD  
Bob Evans' Graeter's  
DUNKIN' Arby's

HOSBROOK ROAD

FUSIAN CURRITO  
COOPER'S HAWK  
WINERY & RESTAURANTS







**TODD PEASE**

513 297 2506

[todd.pease@jll.com](mailto:todd.pease@jll.com)

**RUSTY MYERS**

513 252 2158

[rusty.myers@jll.com](mailto:rusty.myers@jll.com)



**CLC<sub>RD</sub>US**  
PARTNERS

Although information has been obtained from sources deemed reliable, JLL does not make any guarantees, warranties or representations, express or implied, as to the completeness or accuracy as to the information contained herein. Any projections, opinions, assumptions or estimates used are for example only. There may be differences between projected and actual results, and those differences may be material. JLL does not accept any liability for any loss or damage suffered by any party resulting from reliance on this information. If the recipient of this information has signed a confidentiality agreement with JLL regarding this matter, this information is subject to the terms of that agreement. ©2024 Jones Lang LaSalle Brokerage, Inc. All rights reserved.