



Conceptual Rendering

**BUILD TO SUIT
FOR LEASE OR FOR SALE**

INTERSTATE COMMERCE CENTER - SITE B

Cleveland-East Liverpool Rd & Mondial Pkwy
Streetsboro, OH 44241

David Stecker

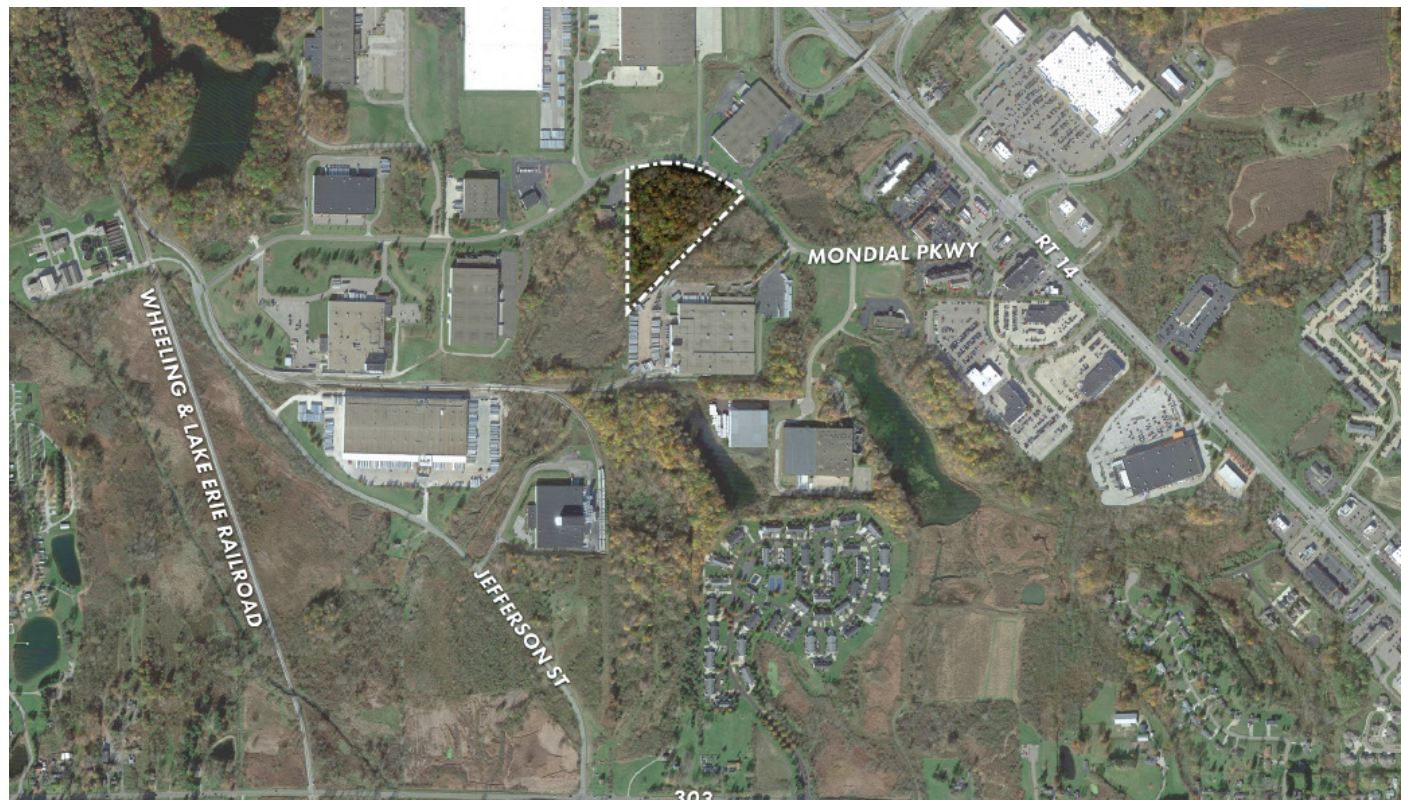
Managing Director

+1 216 937 1965

david.stecker@jll.com

PROPERTY HIGHLIGHTS

- \pm 9.08 Acres
- Zoning: I-1, C-3
- Utilities available to the site
- High visibility
- Close proximity to I-80, I-480, Route 14, Route 303 with easy highway access



DEMOGRAPHICS

TOTAL POPULATION

1 MILE	5 MILES	10 MILES
2,762	57,146	276,076

DAYTIME POPULATION

1 MILE	5 MILES	10 MILES
3,962	65,800	280,787

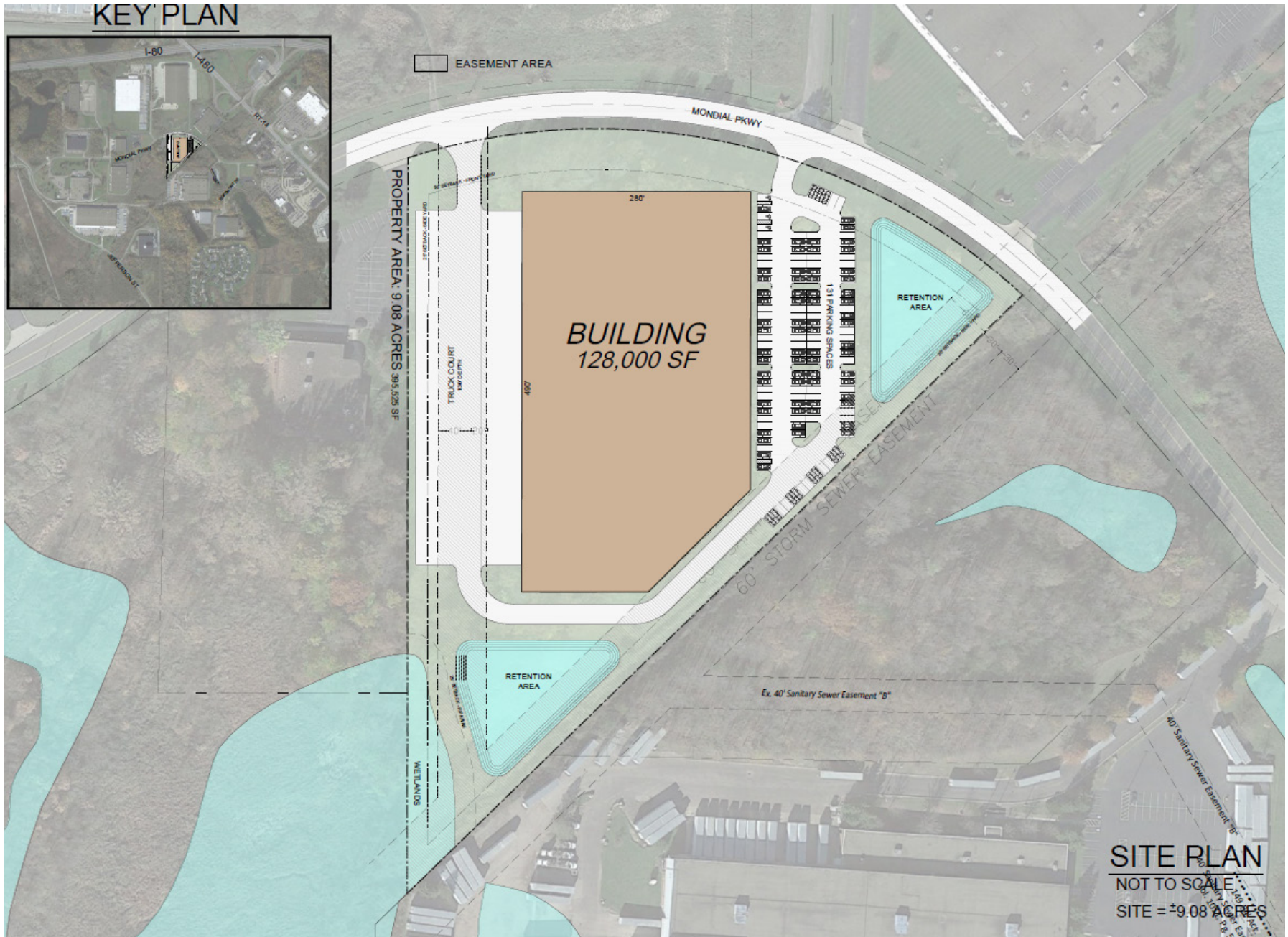
DAYTIME WORKERS

1 MILE	5 MILES	10 MILES
2,904	39,111	151,292

AVERAGE HOUSEHOLD INCOME

1 MILE	5 MILES	10 MILES
\$92,826	\$154,153	\$119,598

SITE PLAN





For further information, please contact:

David Stecker

Managing Director

+1 216 937 1965

david.stecker@jll.com

Although information has been obtained from sources deemed reliable, JLL does not make any guarantees, warranties or representations, express or implied, as to the completeness or accuracy as to the information contained herein. Any projections, opinions, assumptions or estimates used are for example only. There may be differences between projected and actual results, and those differences may be material. JLL does not accept any liability for any loss or damage suffered by any party resulting from reliance on this information. If the recipient of this information has signed a confidentiality agreement with JLL regarding this matter, this information is subject to the terms of that agreement. ©2024. Jones Lang LaSalle IP, Inc. All rights reserved.