



1100 Vermont Ave, Washington DC

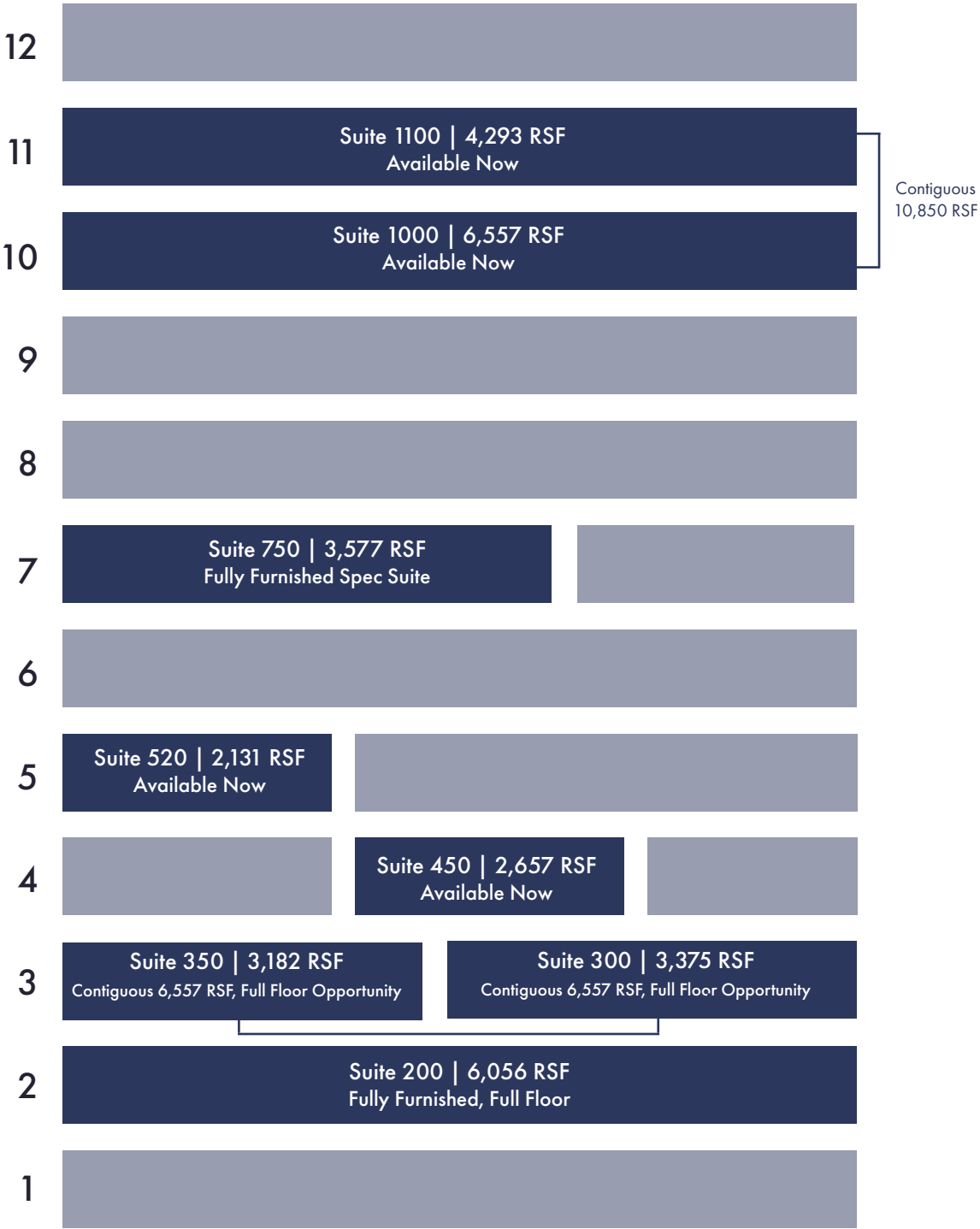
This **Class A** office building in downtown Washington offers sub-10,000 SF floorplates and parking within a quarter mile of Metrorail. Prominently situated on a corner lot, 1101 Vermont has 3 sides of glass and offers views of the Washington Monument and McPherson Square from each floor. The property underwent a comprehensive, **\$12+ million (\$179/SF) renovation to slab that was completed in 2014.**

1101 Vermont is situated in the East End at the **nexus of where Washington lives, works, and plays.** The location is easily accessible by car via some of the city’s major thoroughfares and within walking distance of all six Metrorail transit lines, providing tenants with unparalleled accessibility in and around the District. In addition to outstanding accessibility, the high-end retail, restaurants, and entertainment options of 14th Street, Logan Circle, Dupont Circle, and Shaw are all a short walk from the property, affording tenants an unmatched live-work-play experience in downtown Washington, DC.



1100 Vermont Ave, Washington DC

Availabilities





Building Highlights

- \$12 million renovation completed in 2014
- Corner office location with park + monument views
- One block from Midtown Center
- Walkable distance to all six metrolines
- 19 windowed offices possible on typical full floors

2nd Floor

Suite 200 | 6,056 RSF
Fully Furnished

Programming:

- 11 Windowed offices
- 3 Interior offices
- 1 Large conference room
- 1 Small conference
- Pantry
- Workroom
- Furnished Shower



L Street

Vermont Street

3rd Floor

Suite 300 | 3,375 RSF

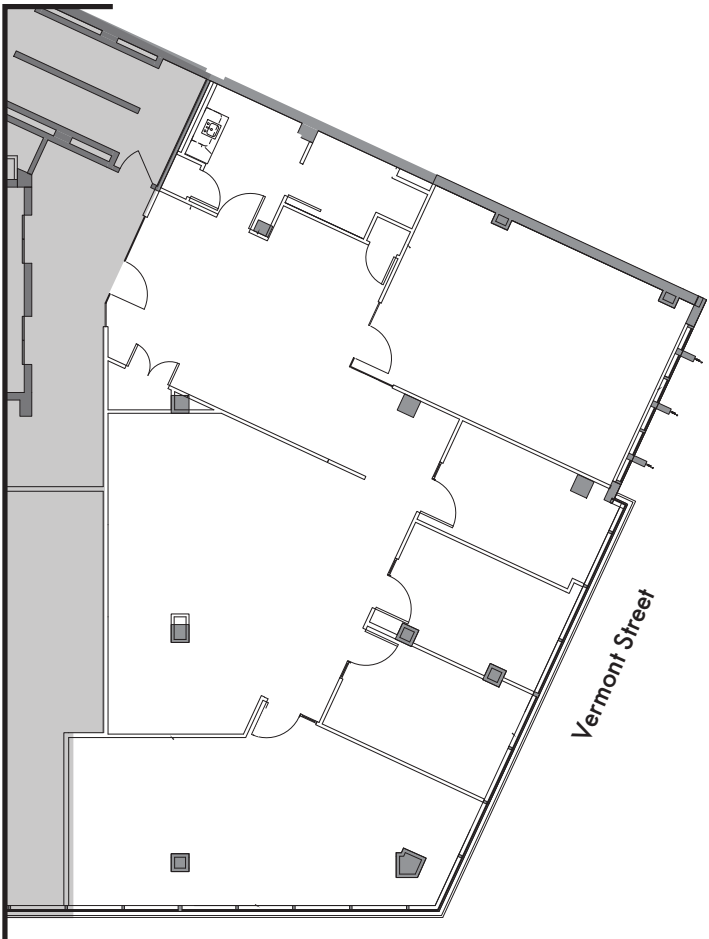
Suite 350 | 3,182 RSF
Pre-Built

Can be made contiguous at 6,557 RSF
for a full floor opportunity

Suite 300 Programming:

- 1 Conference
- 4 Windowed offices
- Open space
- Pantry

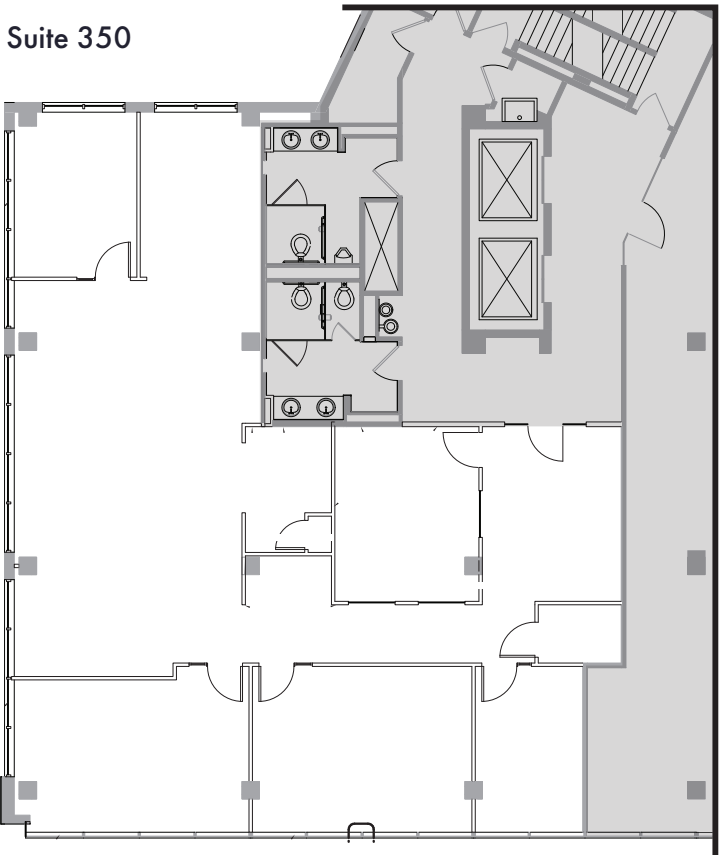
Suite 300



L Street

Vermont Street

Suite 350



L Street



Click or scan to
view Matterport

Suite 350 Programming:

- 4 Large windowed offices
OR meeting rooms
- Pantry
- Open space

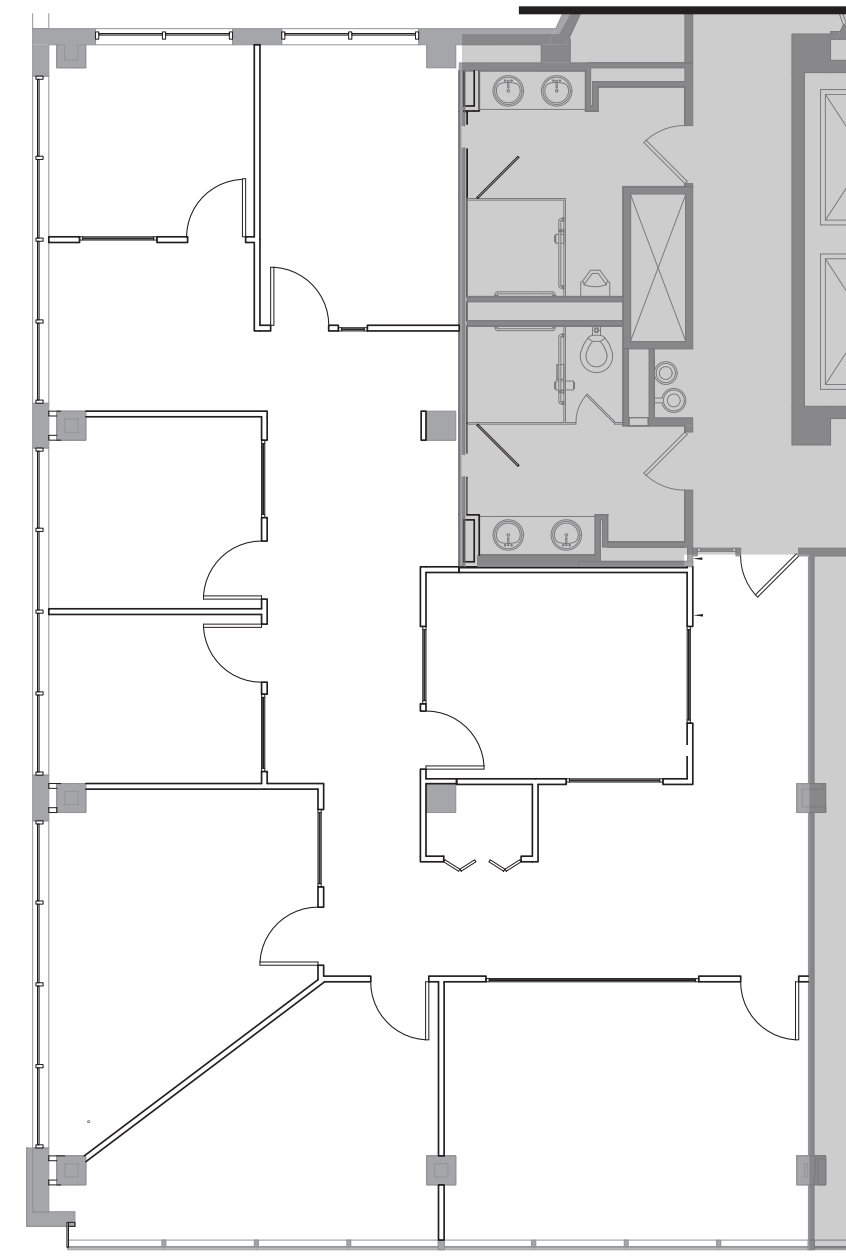


4th Floor

Suite 450 | 2,657 RSF
Pre-Built

Programming:

6 Windowed offices
Conference room
Pantry

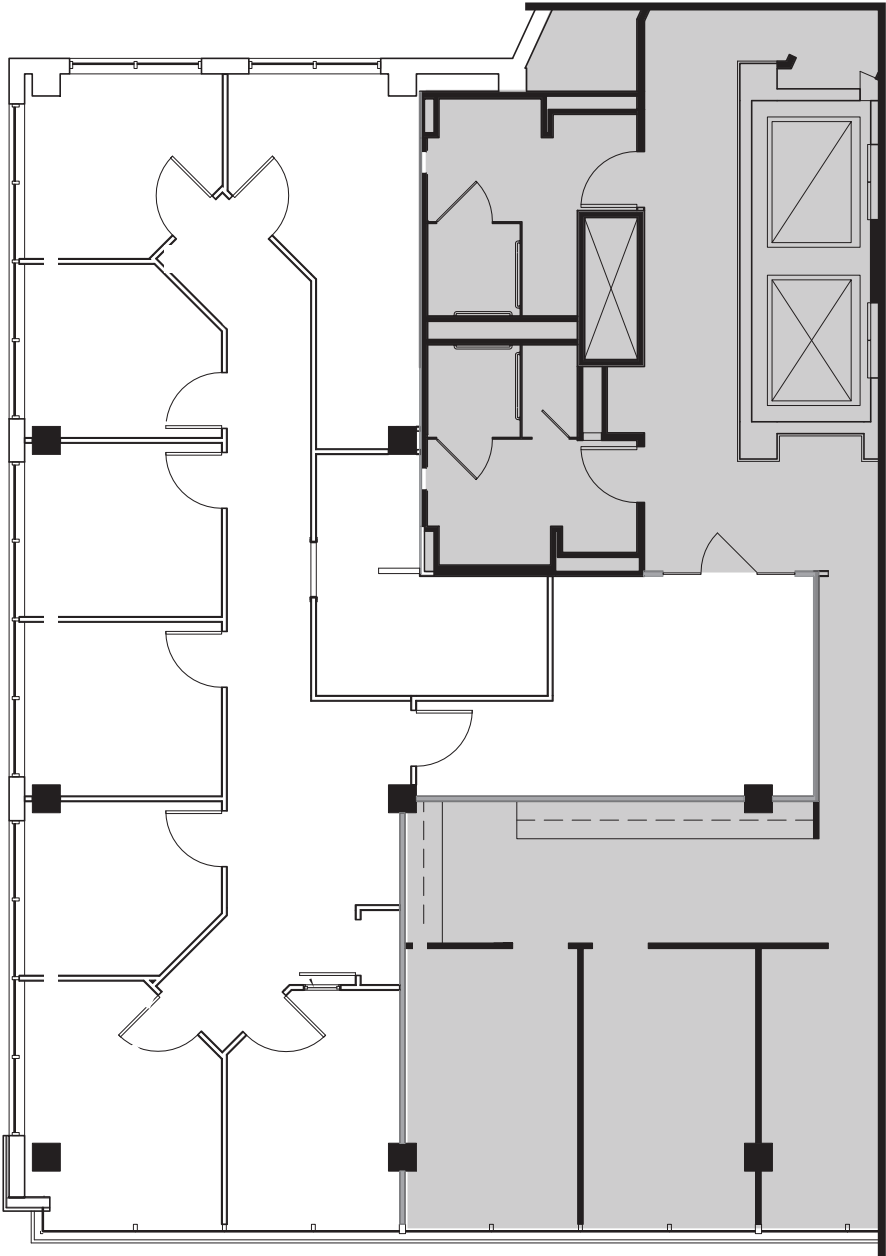


L Street

5th Floor

Suite 520 | 2,131 RSF
Available Now
Pre-Built therapist/ light medical suite

- Programming:
- 8 Treatment rooms
 - Secure waiting room
 - Pantry

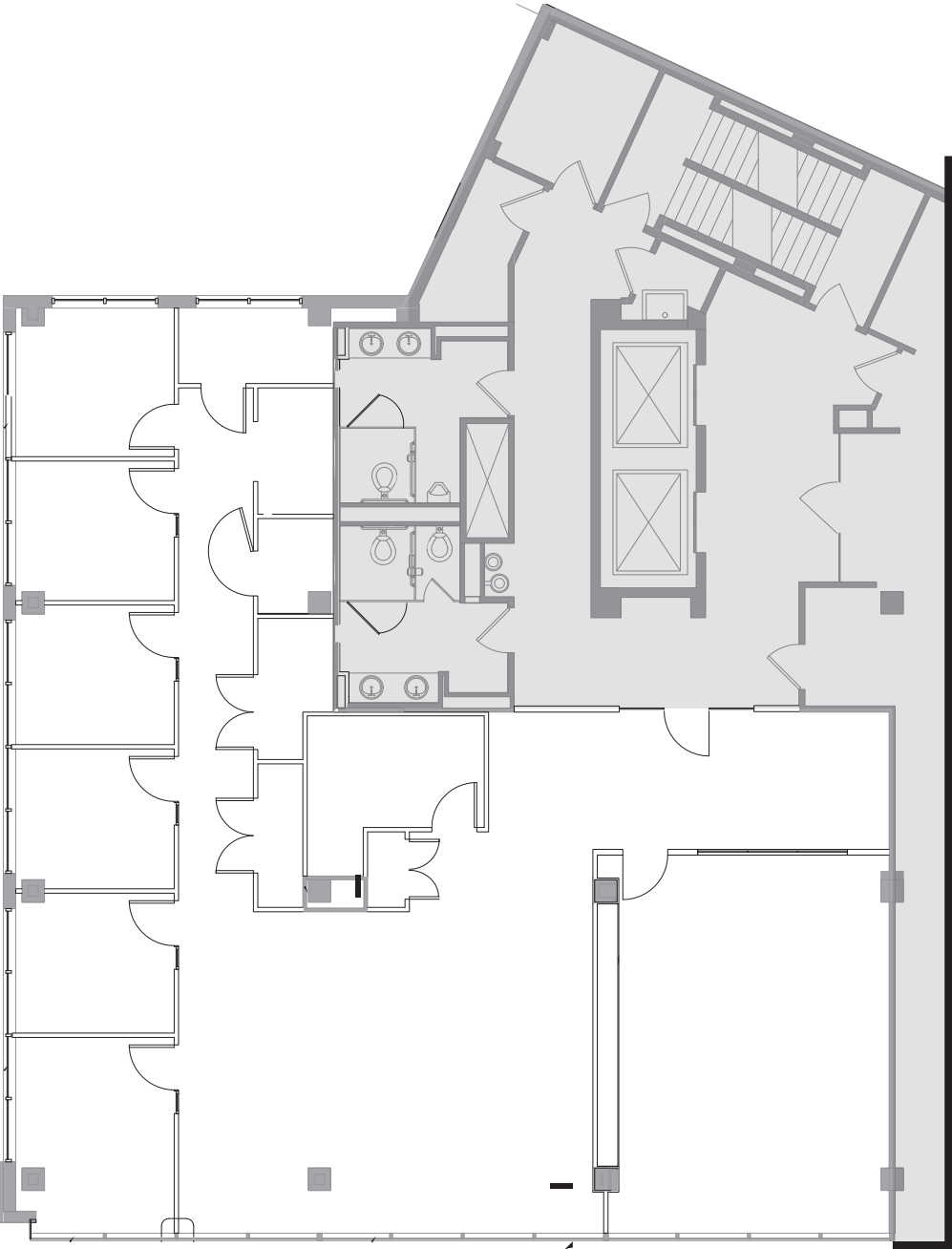


L Street

7th Floor

Suite 750 | 3,577 RSF
Available Now
Brand new fully furnished spec suite

- Programming:
- 1 executive office
 - 5 perimeter offices
 - Conference room
 - Open seating
 - Pantry



L Street

10th Floor

Suite 1000 | 6,557 RSF

Full floor opportunity with Monument views. Can be made contiguous with 11th floor for 10,850 RSF.

Programming:

- 7 Offices
- 1 Executive Office
- 1 Large Conference Room
- 2 Small Conference Rooms
- 16 Workstations
- Pantry



L Street

Vermont Street

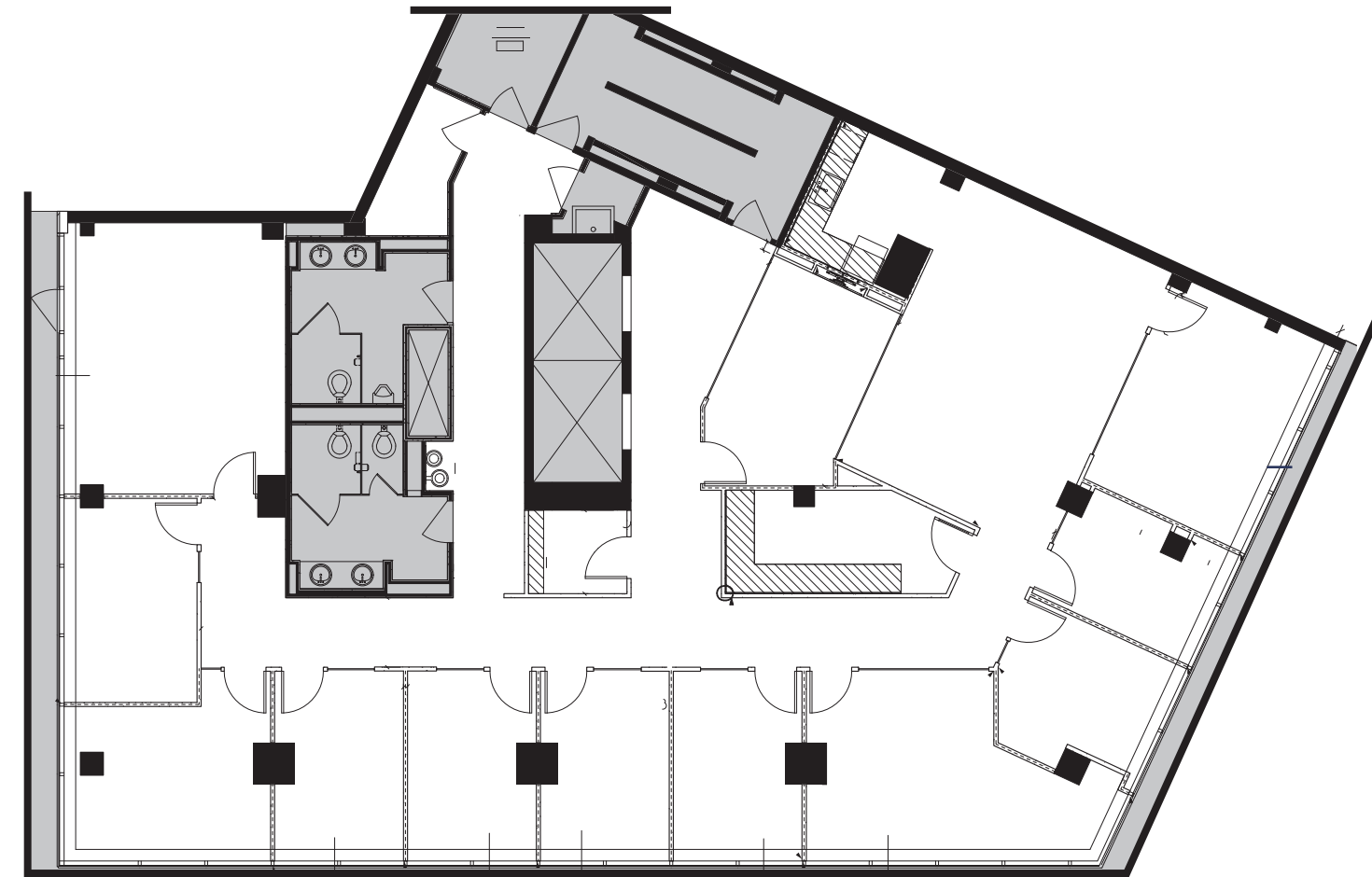
11th Floor

Suite 1100 | 4,293 RSF

Full floor opportunity with Monument views! Currently office intensive second generation build out.

Programming:

- 10 offices
- 2 conference rooms
- Pantry
- Open Space

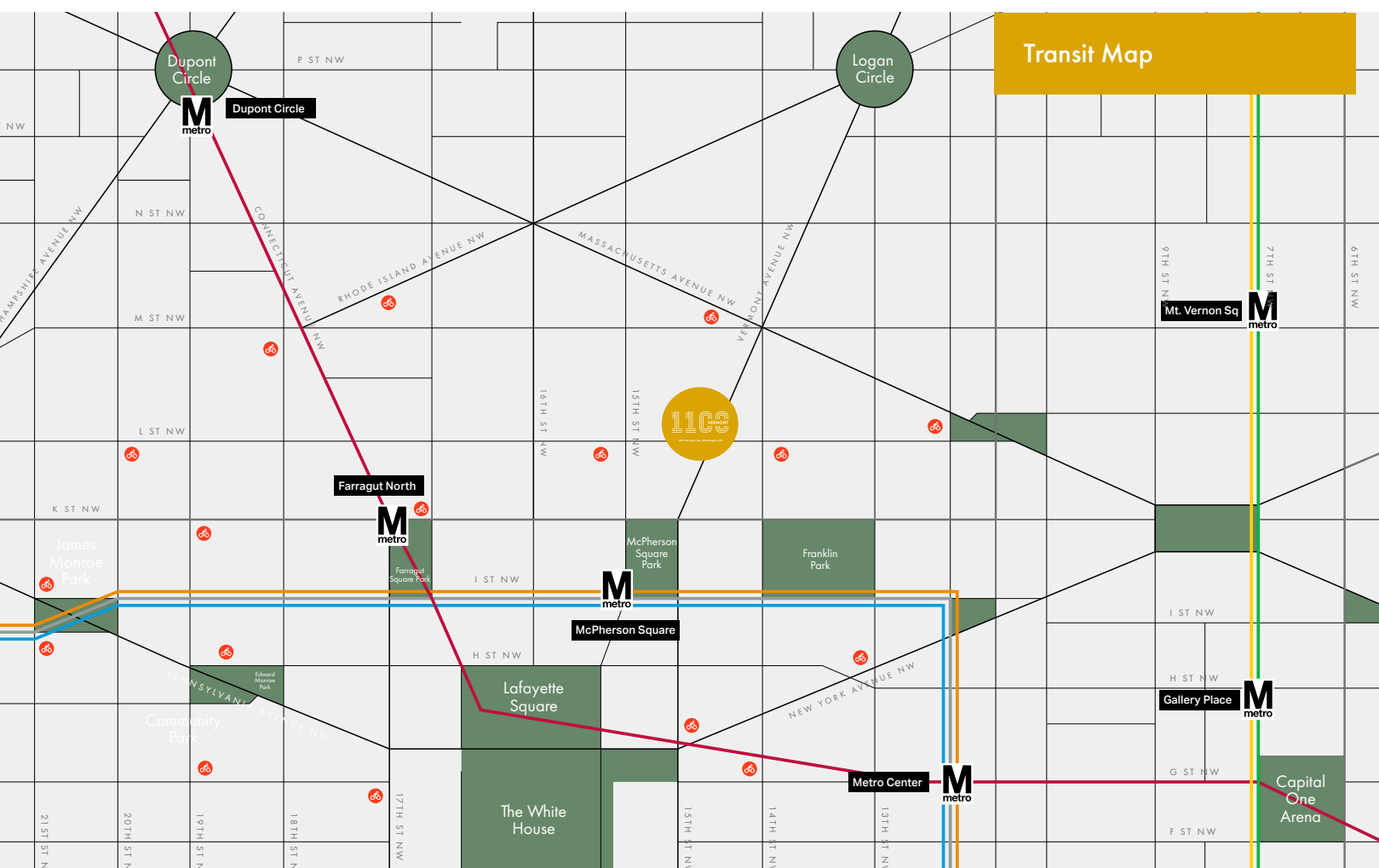


L Street



SITUATED AT THE NEXUS OF WHERE WASHINGTON LIVES, WORKS, AND PLAYS

- One block from Midtown Center – featuring 44,000 SF of engaging restaurants, cafes, and markets.
- Easily walkable to downtown Washington DC's most popular residential neighbourhoods: the 14th Street Corridor, Logan Circle, Dupont, and Shaw
- Walkable access to all six metro lines in 12 minutes or less





1100 Vermont Ave, Washington DC

FOR LEASING INFORMATION, CONTACT US

Seth Benhard
202 215 0478
Seth.Benhard@jll.com

Evan Behr
202 256 3738
Evan.Behr@jll.com

Jeanette Ko
202 719 6131
Jeanette.Ko@jll.com

Colleen Hollowood
202 719 5877
Colleen.Hollowood@jll.com

