



Now Asking
Mid \$30's IG!

634 Second Street

15,010 RSF - 45,032 RSF | Full Building Plug & Play Sublease

634 Second Street

45,032 RSF | Term Thru December 2027

**Now Asking
Mid \$30's IG!**



Exclusive Roof Deck



**Divisible to 15,000 SF
Individual Floors**



Roll-up Door



**Designated
Lobby/ Reception**



24/7 Security



**True Plug & Play
330+ Sit/Stand Desks**



**Interconnecting
Stairwell**

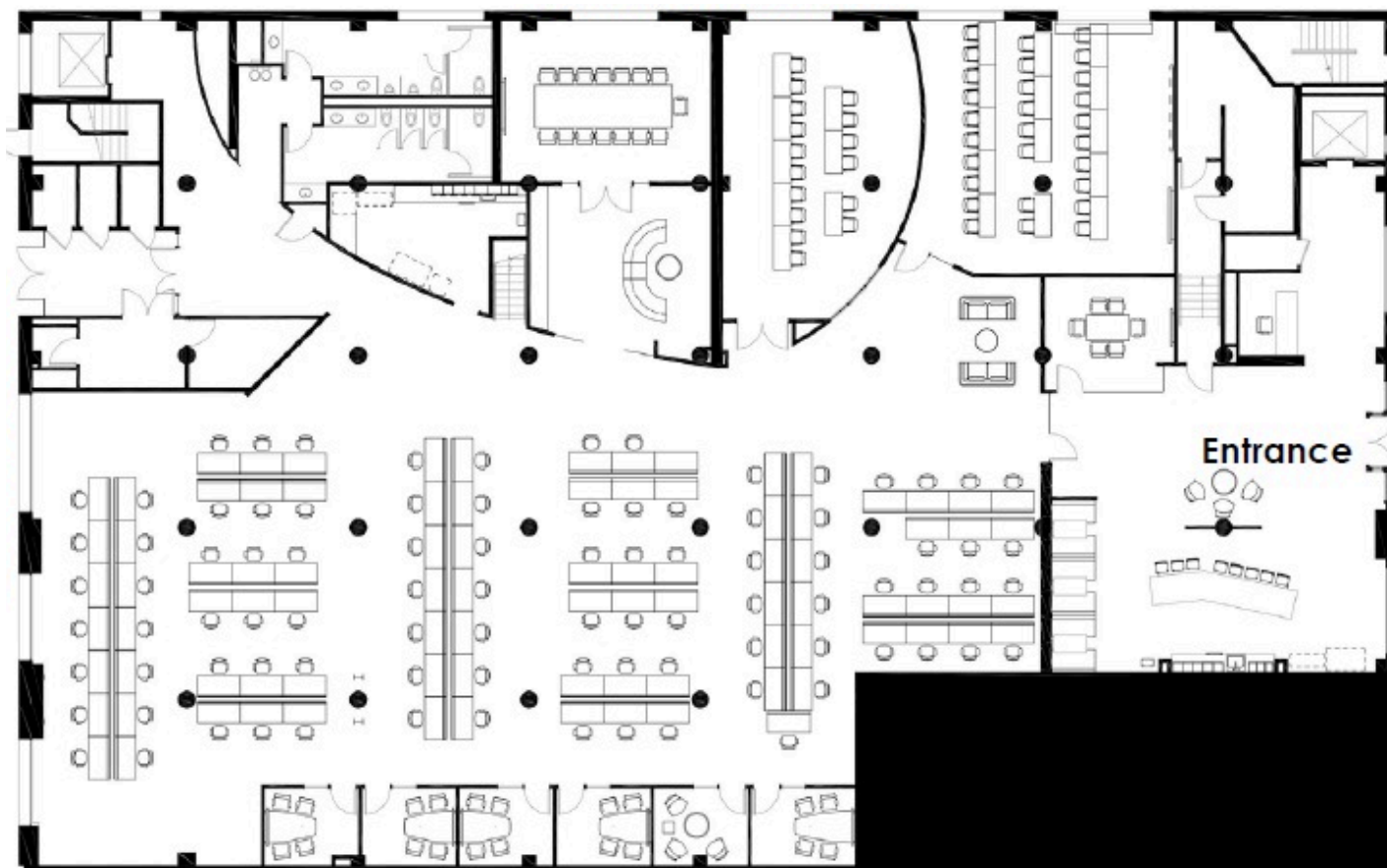


**Executive
Briefing Center**



634 Second Street

1st Floor | 15,012 RSF | Term Thru December 2027



- +/-92 desks
- Reception
- True plug & play opportunity
- Highly improved creative space
- Large Kitchen & cafe area
- Executive briefing center/training room
- Large open floorplan
- High ceilings
- Several meeting rooms
- Floors may be leased together or separately

Samantha Martz

samantha.martz@jll.com

+1 530 515 8035

CA RE Lic: #01964636

Hugh Scott

hugh.scott@jll.com

+1 650 468 8688

CA RE Lic: #01414759

Travis James

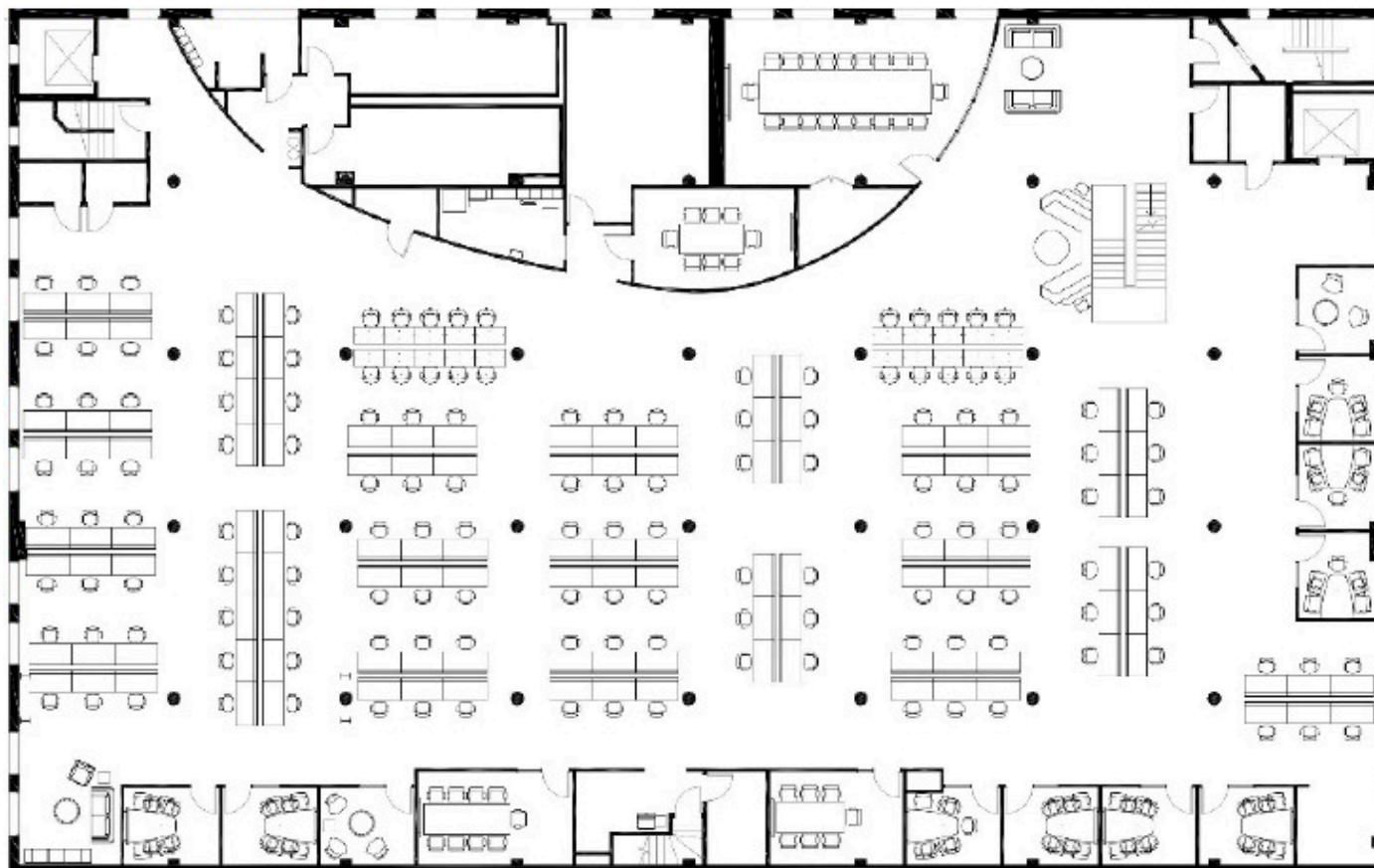
travis.james@jll.com

+1 415 354 6960

CA RE Lic: #01773977

634 Second Street

2nd Floor | 15,010 RSF | Term Thru December 2027



- +/-132 desks
- Interconnecting stair between the 2nd & 3rd floors
- True plug & play opportunity
- Highly improved creative space
- Large Kitchen & cafe area
- Large boardroom
- Large open floorplan
- Several meeting rooms
- Floors may be leased together or separately

Samantha Martz

samantha.martz@jll.com

+1 530 515 8035

CA RE Lic: #01964636

Hugh Scott

hugh.scott@jll.com

+1 650 468 8688

CA RE Lic: #01414759

Travis James

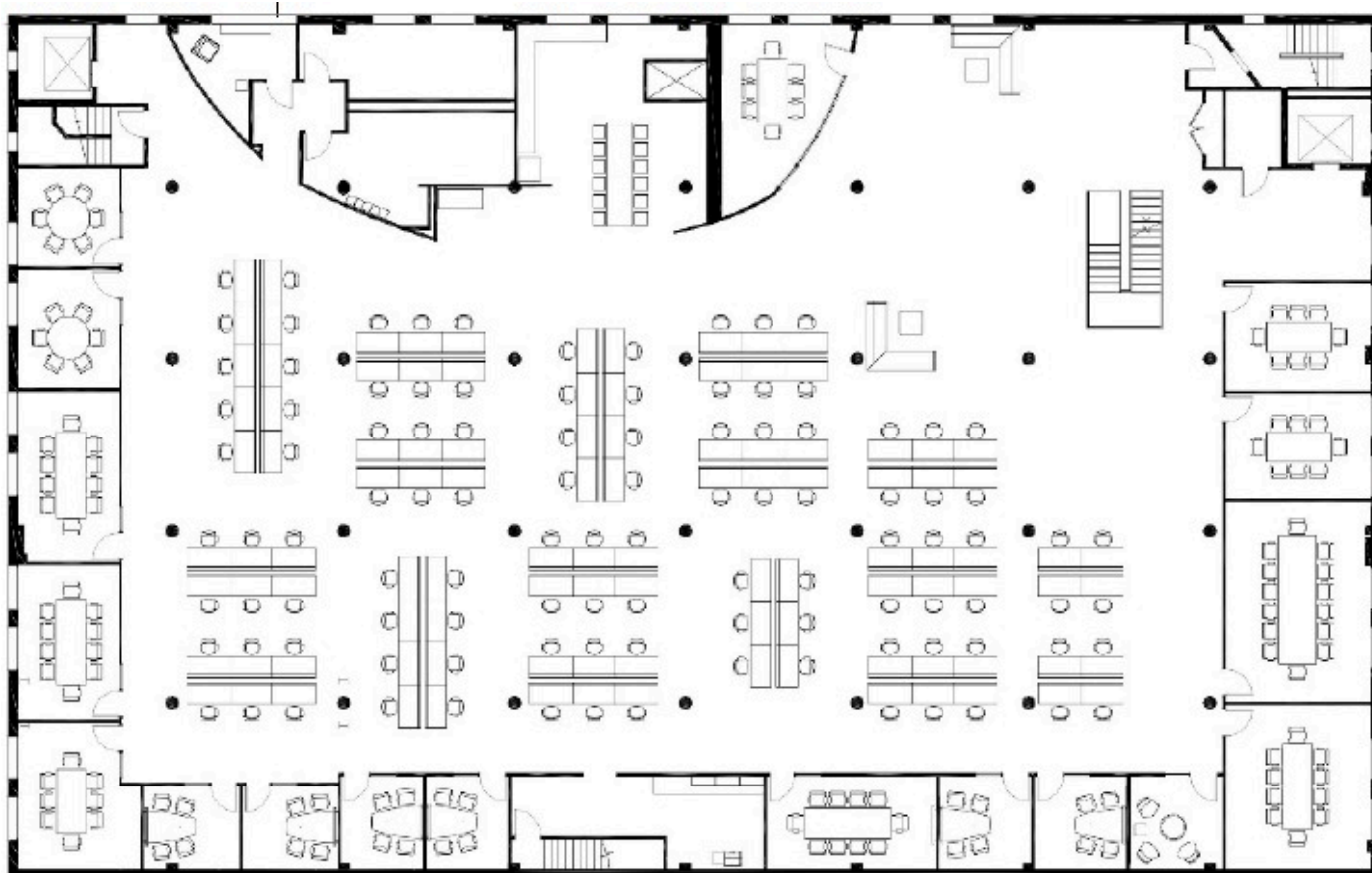
travis.james@jll.com

+1 415 354 6960

CA RE Lic: #01773977

634 Second Street

3rd Floor | 15,010 RSF | Term Thru December 2027



- +/-108 desks
- Interconnecting stair between the 2nd & 3rd floors
- True plug & play opportunity
- Highly improved creative space
- Large Kitchen & cafe area
- Large open floorplan
- Several meeting rooms
- Floors may be leased together or separately

Samantha Martz
samantha.martz@jll.com
+1 530 515 8035
CA RE Lic: #01964636

Hugh Scott
hugh.scott@jll.com
+1 650 468 8688
CA RE Lic: #01414759

Travis James
travis.james@jll.com
+1 415 354 6960
CA RE Lic: #01773977

634 Second Street

45,032 RSF | Term Thru December 2027



Samantha Martz
samantha.martz@jll.com
+1 530 515 8035
CA RE Lic: #01964636

Hugh Scott
hugh.scott@jll.com
+1 650 468 8688
CA RE Lic: #01414759

Travis James
travis.james@jll.com
+1 415 354 6960
CA RE Lic: #01773977