



JUSTIN CHOI

415 395 7262

Justin.Choi@jll.com

RE License: 02107928

JEFF BADSTUBNER

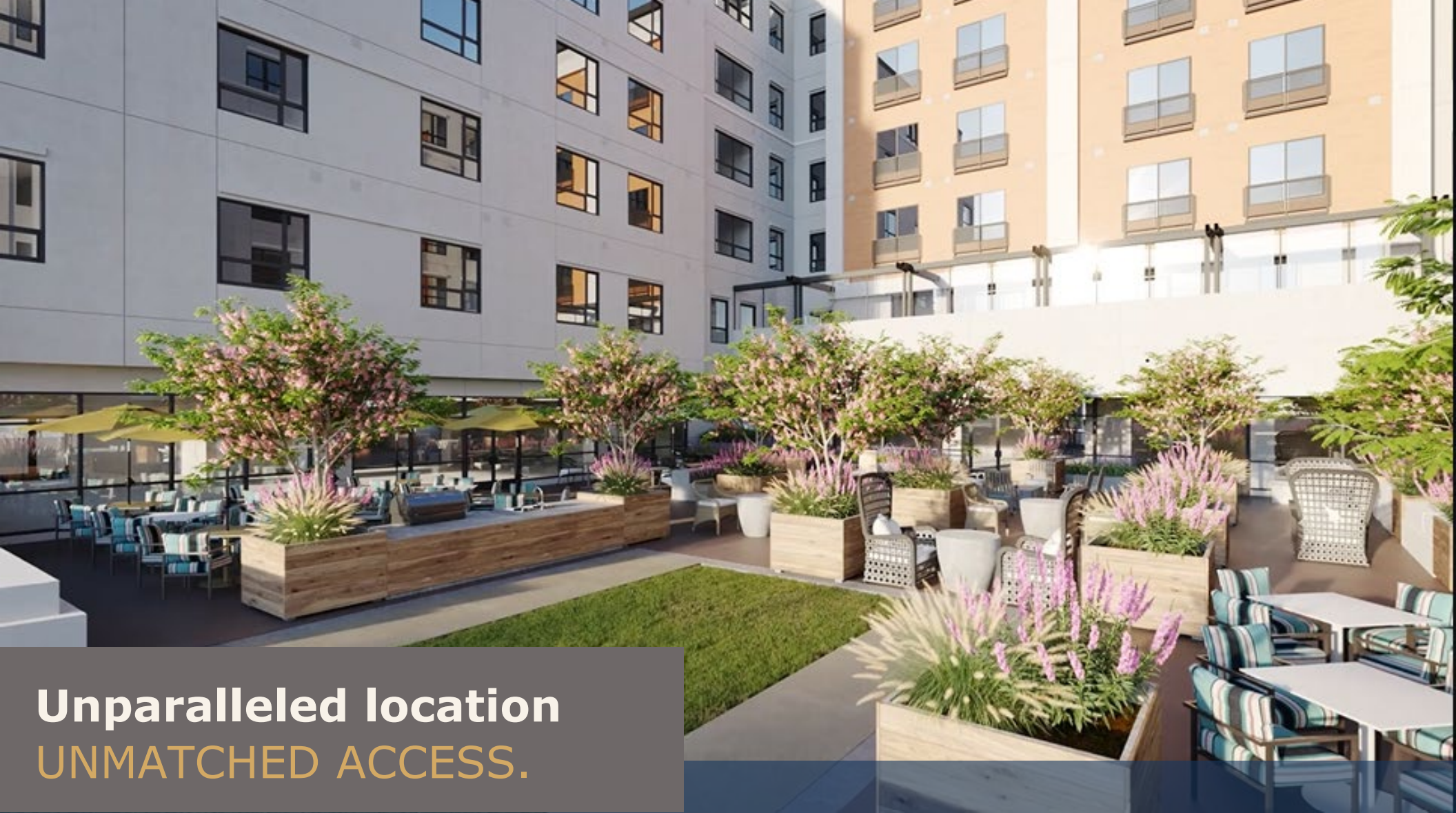
415 395 4900

Jeff.Badstubner@jll.com

RE License: 01155279



Jones Lang LaSalle Brokerage, Inc.
Real Estate License #: 01856260

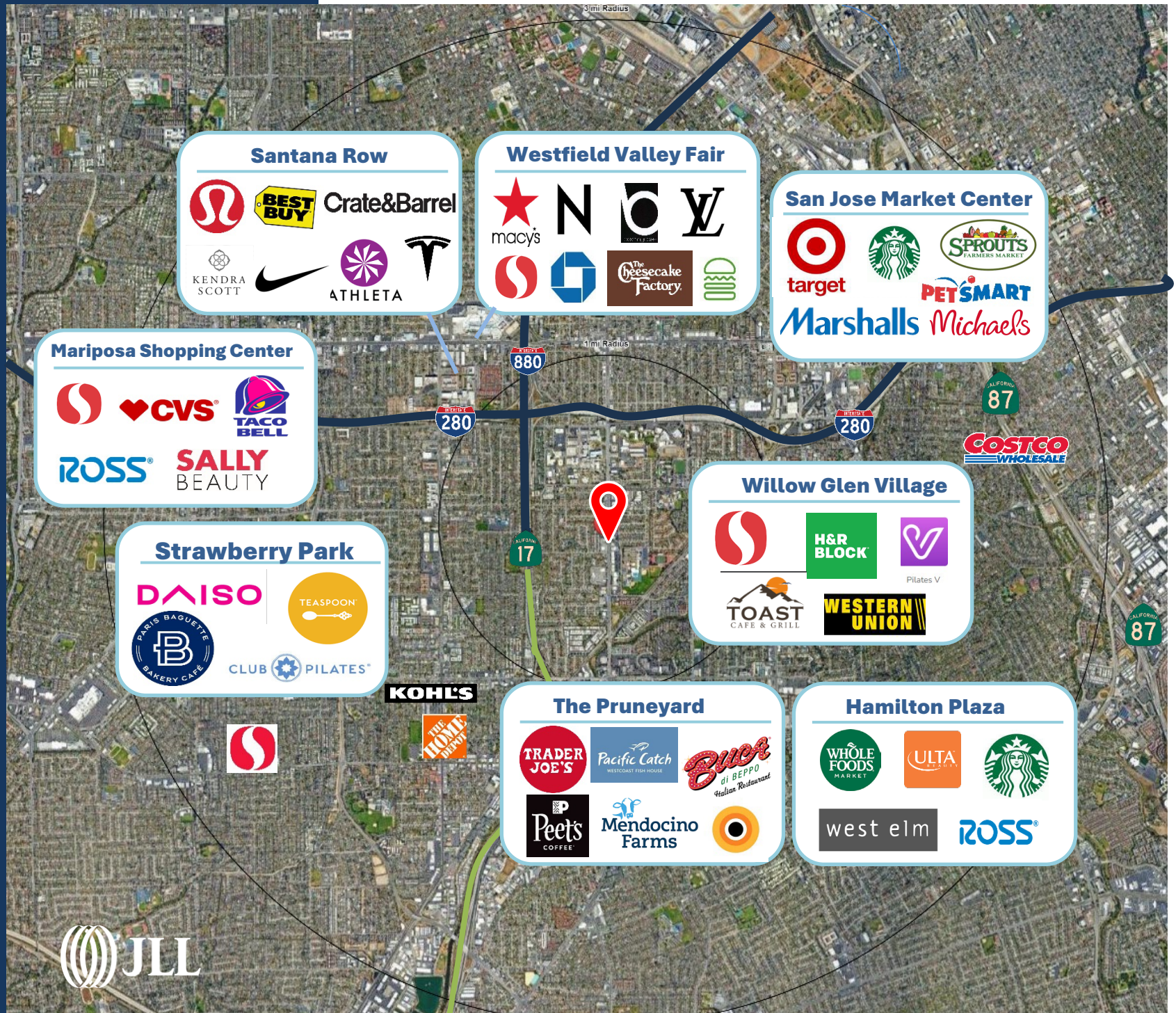


Unparalleled location UNMATCHED ACCESS.

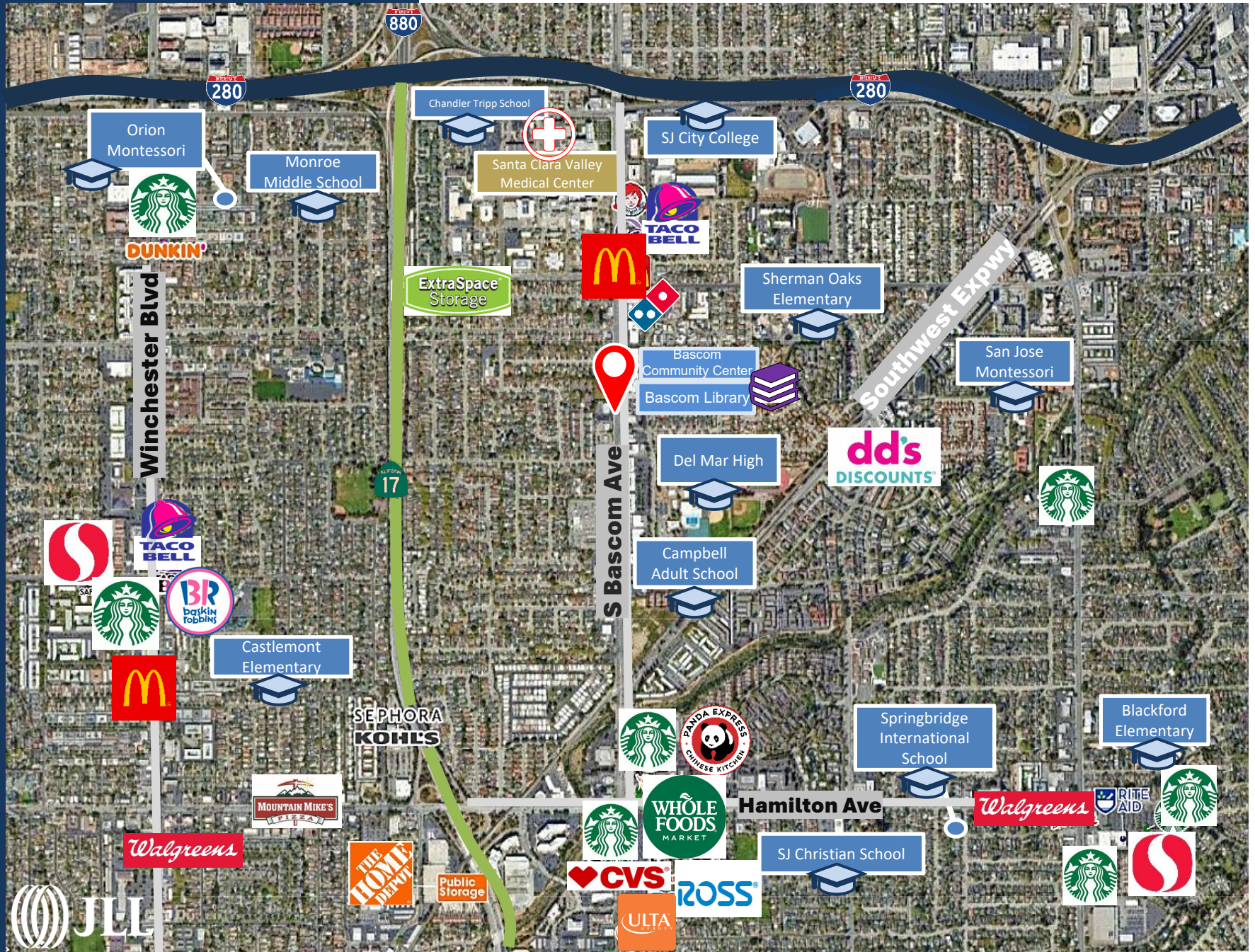
Property Highlights

- » Built in 2024 with a contemporary design
- » Ideal location in one of San Jose's newest and most dynamic senior living communities
- » 165 residential units on site
- » 250,767 suburban population within 3 miles
- » Located next to Santa Clara Valley Medical Center
- » Two separate ground floor spaces: 1,050 SF (with patio opportunity) and 1,225 SF
- » In cold shell condition, TI package available
- » 20 dedicated retail parking spots

In the heart of San Jose



In the heart of San Jose



A Bird's Eye View



The Watermark

Ground Floor Plan

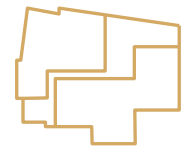


Available Space

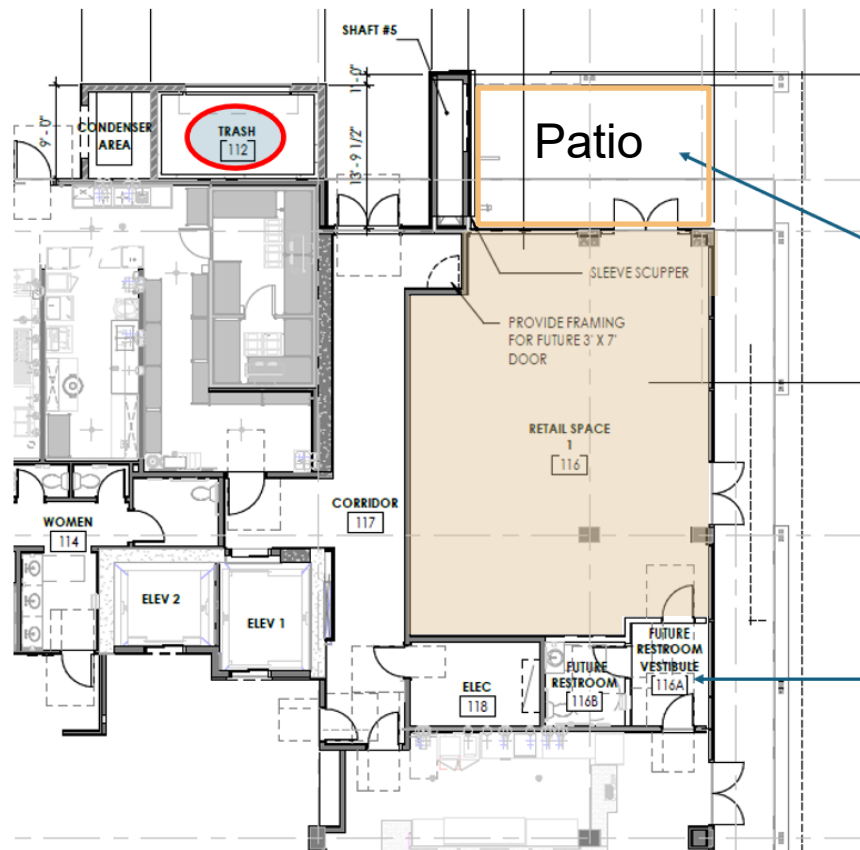
MODERN SANCTUARY.



Contains 165
residential apartments



Cold Shell Condition



Retail Space #1

- 1,050 SF
- 344 SF of Patio Space

Outdoor Patio/seating

Existing bathroom.
Shared with "Bistro" below.

Retail Space 1: 1,050 SF

Ground Floor Retail

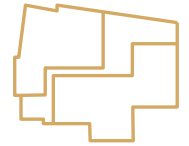


Available Space

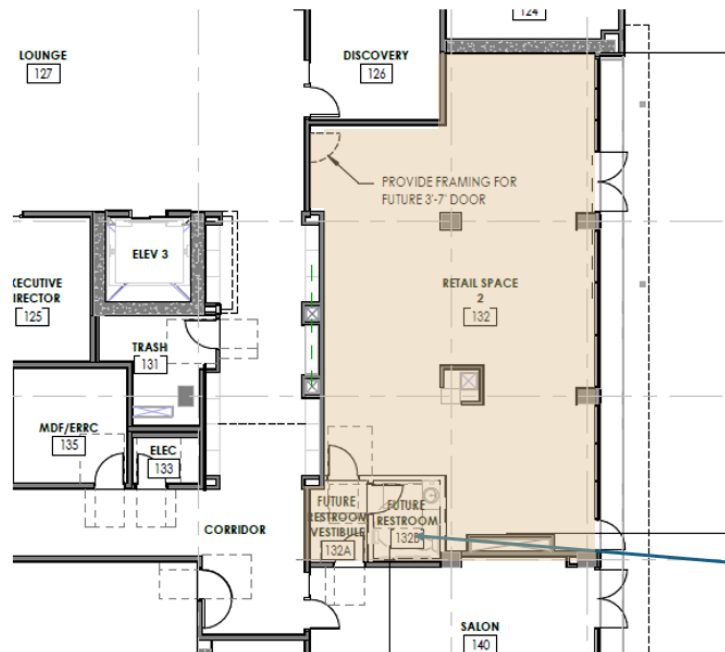
MODERN SANCTUARY.



Contains 165
residential apartments



Cold Shell Condition



Retail Space #2
1,225 SF

Existing bathroom.
Shared with "Bistro" below.

Retail Space 2: 1,225 SF

Ground Floor Retail





JUSTIN CHOI

415 395 7262

Justin.Choi@am.jll.com

RE License: 02107928

JEFF BADSTUBNER

415 395 4900

Jeff.Badstubner@jll.com

RE License: 01155279



Although information has been obtained from sources deemed reliable, neither Owner nor JLL makes any guarantees, warranties or representations, express or implied, as to the completeness or accuracy as to the information contained herein. Any projections, opinions, assumptions or estimates used are for example only. There may be differences between projected and actual results, and those differences may be material. The Property may be withdrawn without notice. Neither Owner nor JLL accepts any liability for any loss or damage suffered by any party resulting from reliance on this information. If the recipient of this information has signed a confidentiality agreement regarding this matter, this information is subject to the terms of that agreement. ©2024. Jones Lang LaSalle IP, Inc. All rights reserved.