

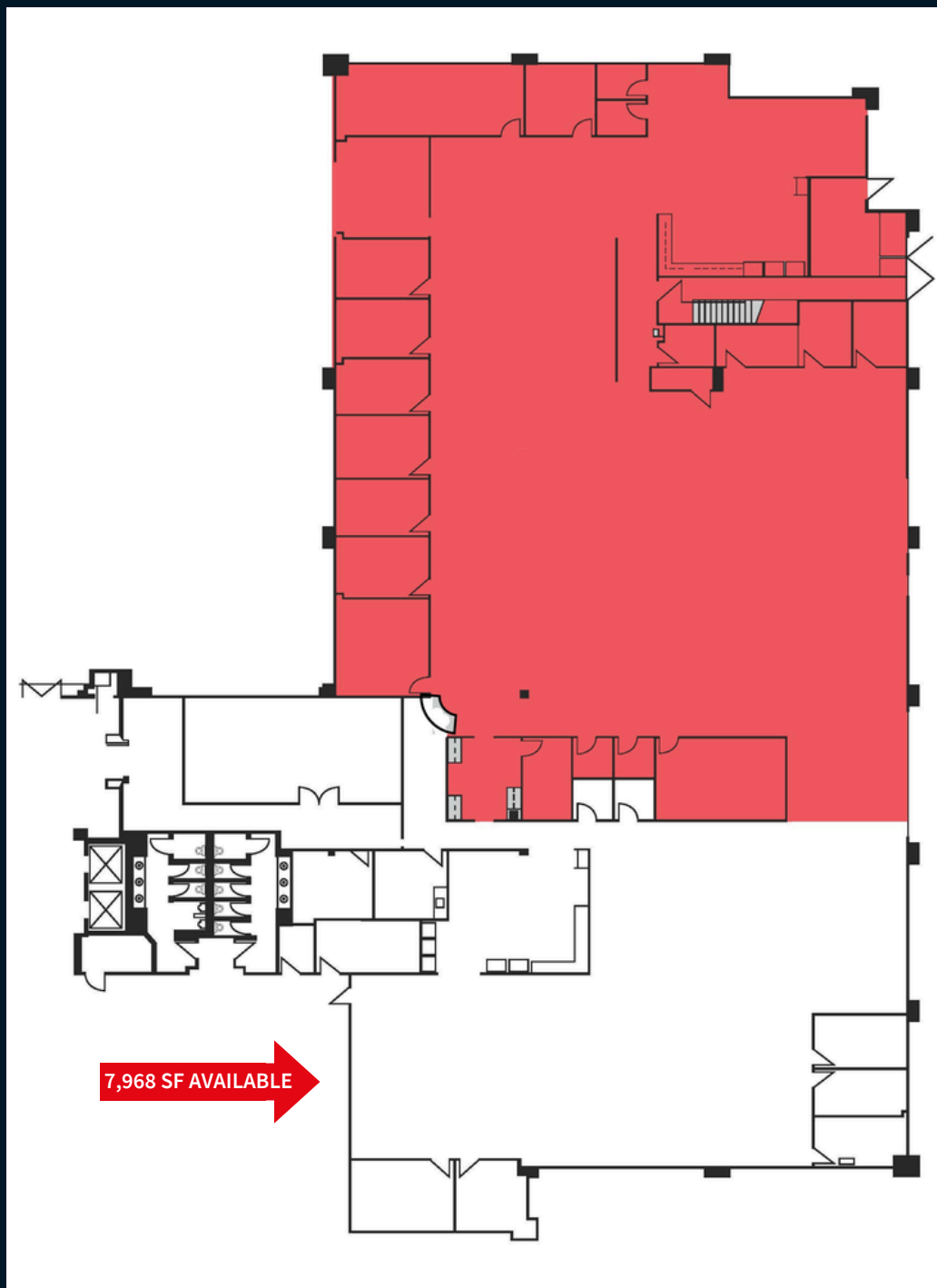


Scottsdale Norte - 11333 North Scottsdale Road

For Sublease

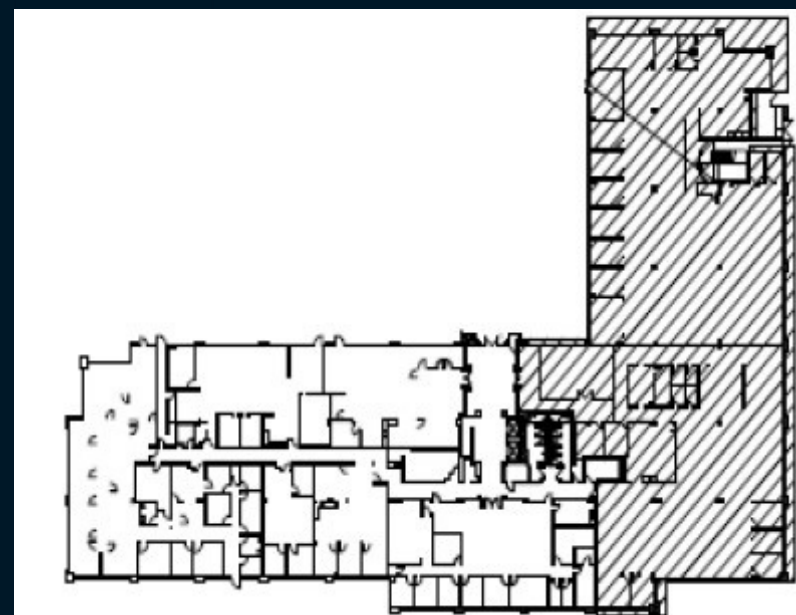
7,968 RSF Immediately Available, Plug & Play

FLOOR PLAN



Property Overview

Location	11333 N Scottsdale Road
Size	7,968 s.f.
Lease Term Thru	March 2030
Rate	Negotiable
Sublease Details	Modern buildout with high end FF&E included. 39 workstations, 3 offices and 4 conference/huddle rooms.
Parking	4.5/1,000
Signage	Prominent signage along Scottsdale Road
Notes	Dining and retail amenities in the immediate proximity.





Thank you

About JLL

For over 200 years, JLL (NYSE: JLL), a leading global commercial real estate and investment management company, has helped clients buy, build, occupy, manage and invest in a variety of commercial, industrial, hotel, residential and retail properties. A Fortune 500® company with annual revenue of \$20.9 billion and operations in over 80 countries around the world, our more than 103,000 employees bring the power of a global platform combined with local expertise. Driven by our purpose to shape the future of real estate for a better world, we help our clients, people and communities SEE A BRIGHTER WAYSM. JLL is the brand name, and a registered trademark, of Jones Lang LaSalle Incorporated. For further information, visit jll.com.

Andrew Medley
Senior Managing Director
andrew.medley@jll.com
T +1 602 282 6287
M + 602 524 0551

Chris Corny
Executive Vice President
chris.corney@jll.com
T +1 602 282 6291
M +1 602 463 7072

Sydney Setnar
Associate
sydney.setner@jll.com
T +1 602 282 6334
M + 614 330 7677