

# For Sublease

301 E. Liberty St. | Ann Arbor, MI  
34,628 SF Available



## Property Details

Located at the corner of Liberty Street and Fifth Avenue in the heart of Ann Arbor's CBD, and is in walking distance to numerous downtown retail, restaurants and U of M Campus.

- Term through 5/31/2028
- Move-in ready with furniture available
- Outdoor balcony
- Municipal lots and structure parking nearby
- Building signage available
- Easy access to I-94, US-23 and M-14

**Asking Rate: \$24.00/SF**

*+ utilities and janitorial*



**JLL**

**Neal Warling**

*Managing Director*

neal.warling@jll.com

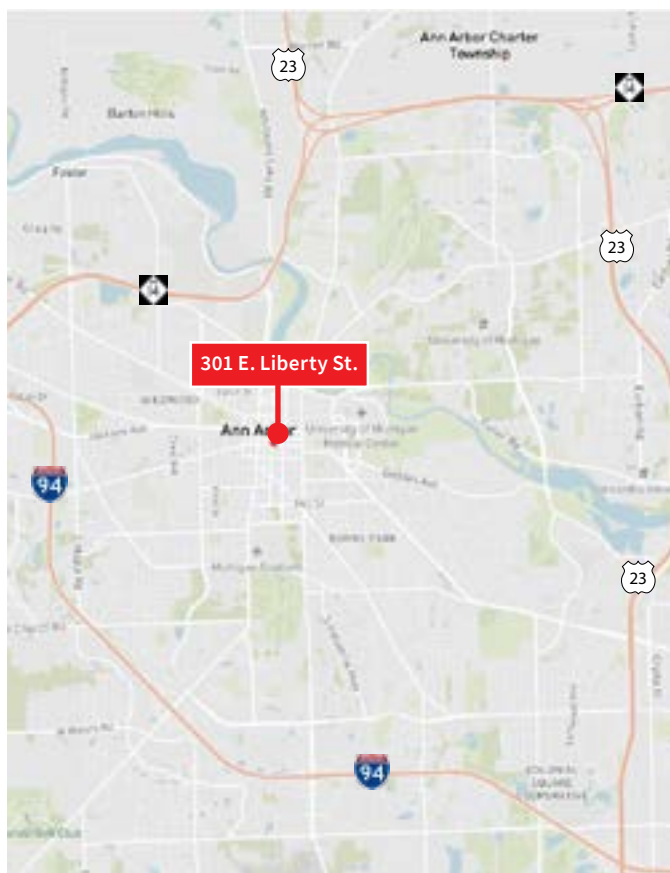
+1 734 769 3201

## 34,628 SF Available

2nd Floor - 7,163 RSF

3rd Floor - 12,625 RSF

4th Floor - 14,840 RSF





## Photos



**JLL**

**Neal Warling**

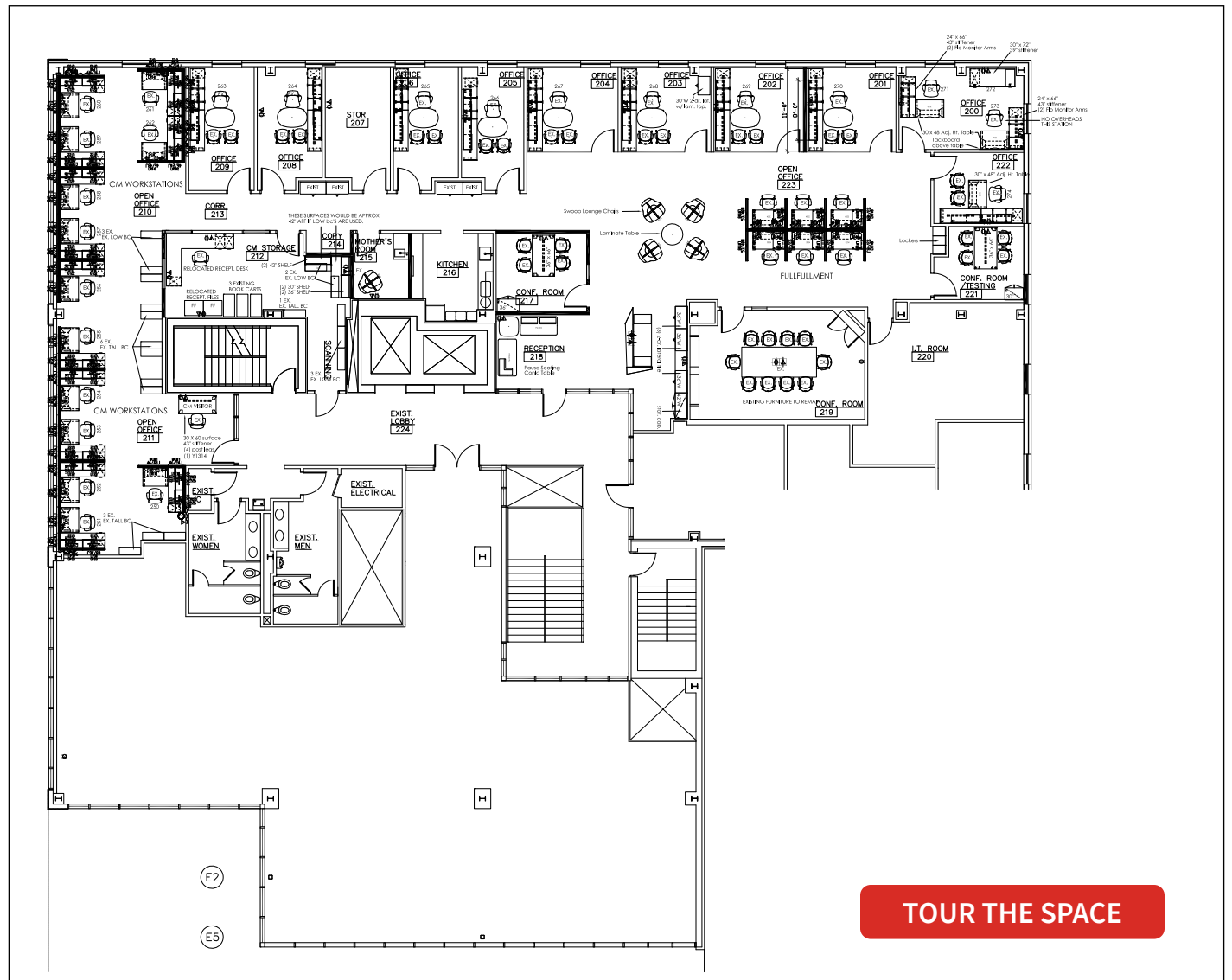
*Managing Director*

neal.warling@jll.com

+1 734 769 3201

# Floor Plan

**2nd Floor - 7,163 RSF**



**TOUR THE SPACE**

**JLL**

**Neal Warling**

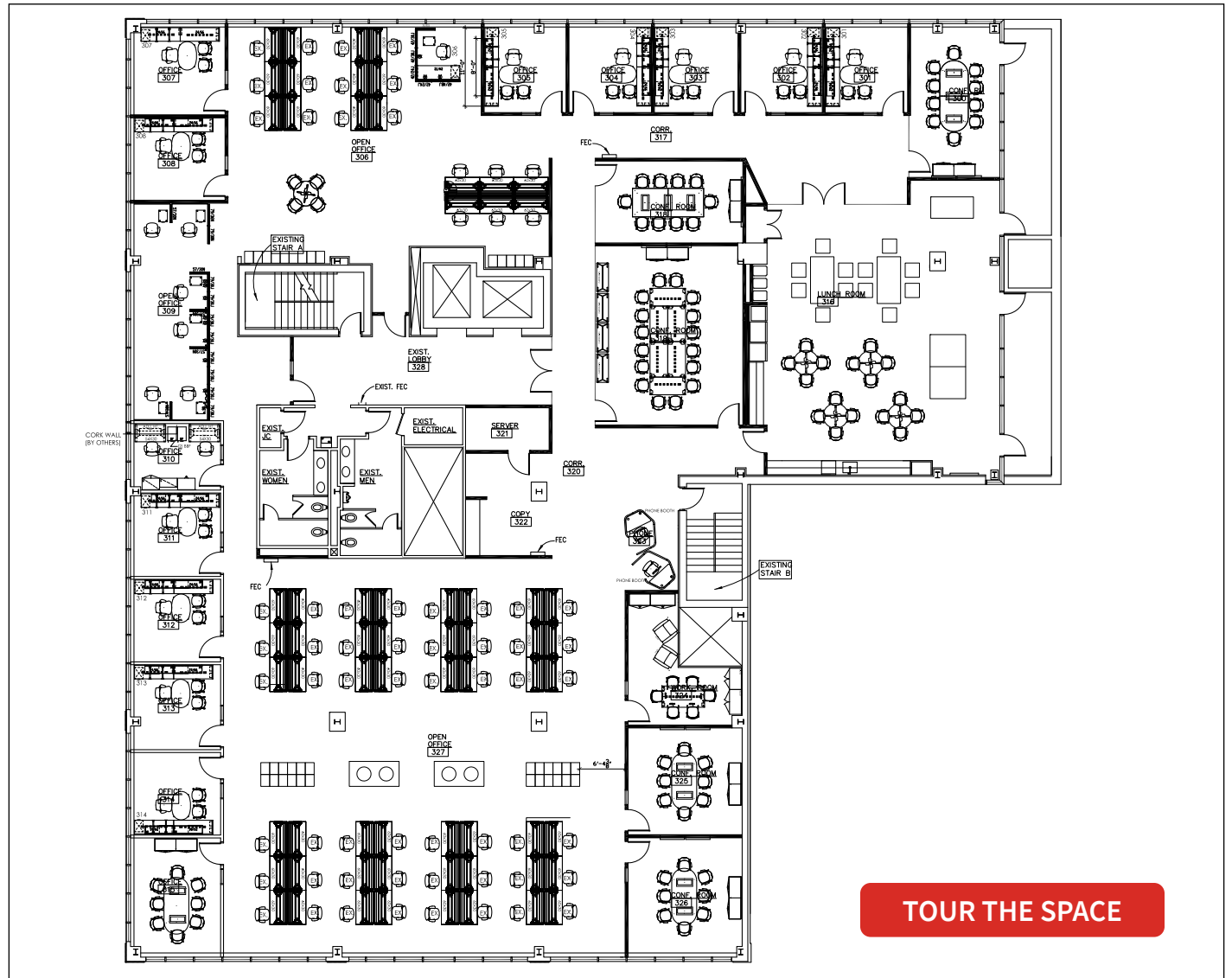
*Managing Director*

neal.warling@jll.com

+1 734 769 3201

# Floor Plan

**3rd Floor - 12,625 RSF**



**JLL**

**Neal Warling**

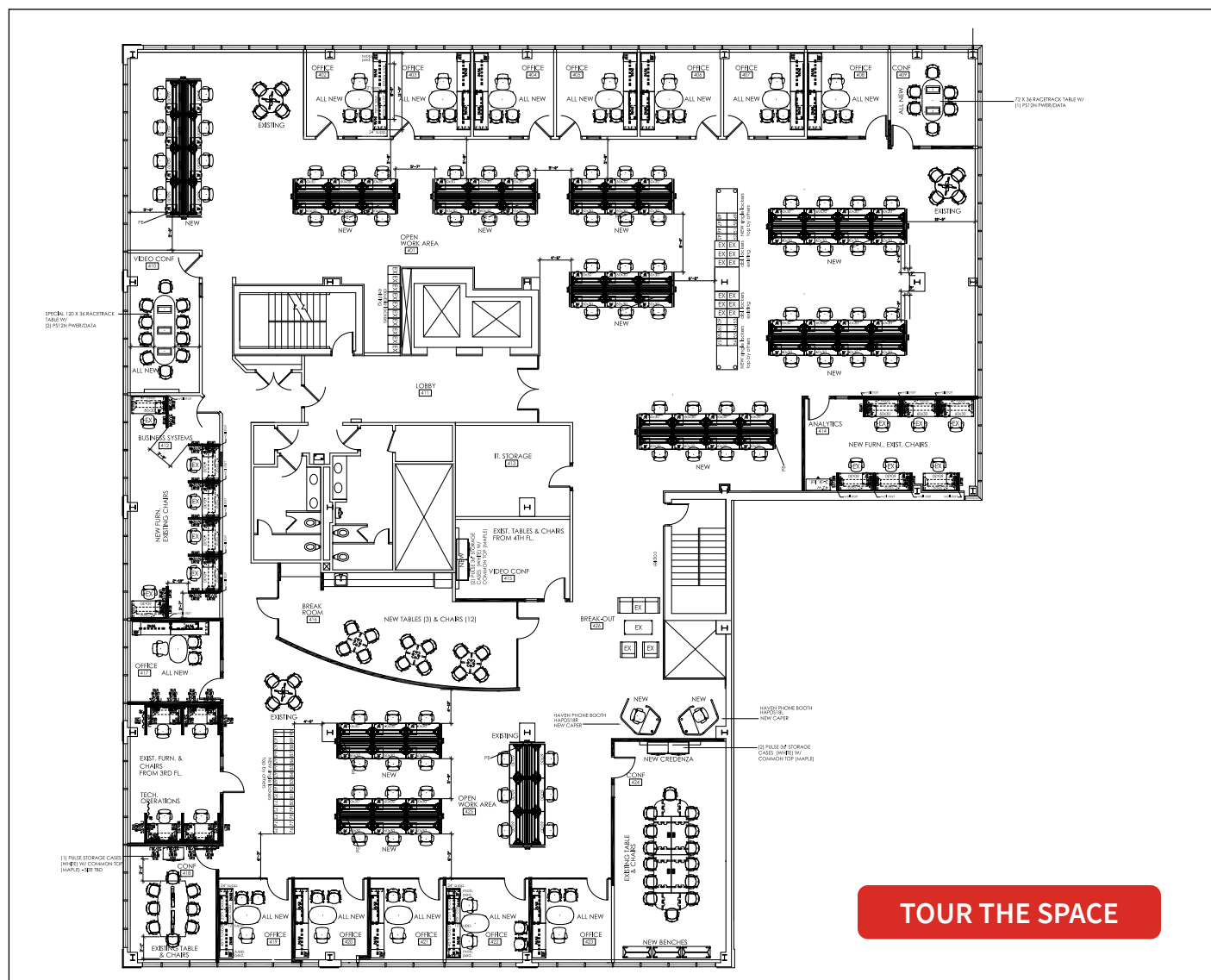
*Managing Director*

neal.warling@jll.com

+1 734 769 3201

# Floor Plan

**4th Floor - 14,840 RSF**



**JLL**

**Neal Warling**

*Managing Director*

neal.warling@jll.com

+1 734 769 3201