

# FOR LEASE

# 497

## EDISON COURT



## ±7,200 SF WAREHOUSE SPACE AVAILABLE FOR LEASE

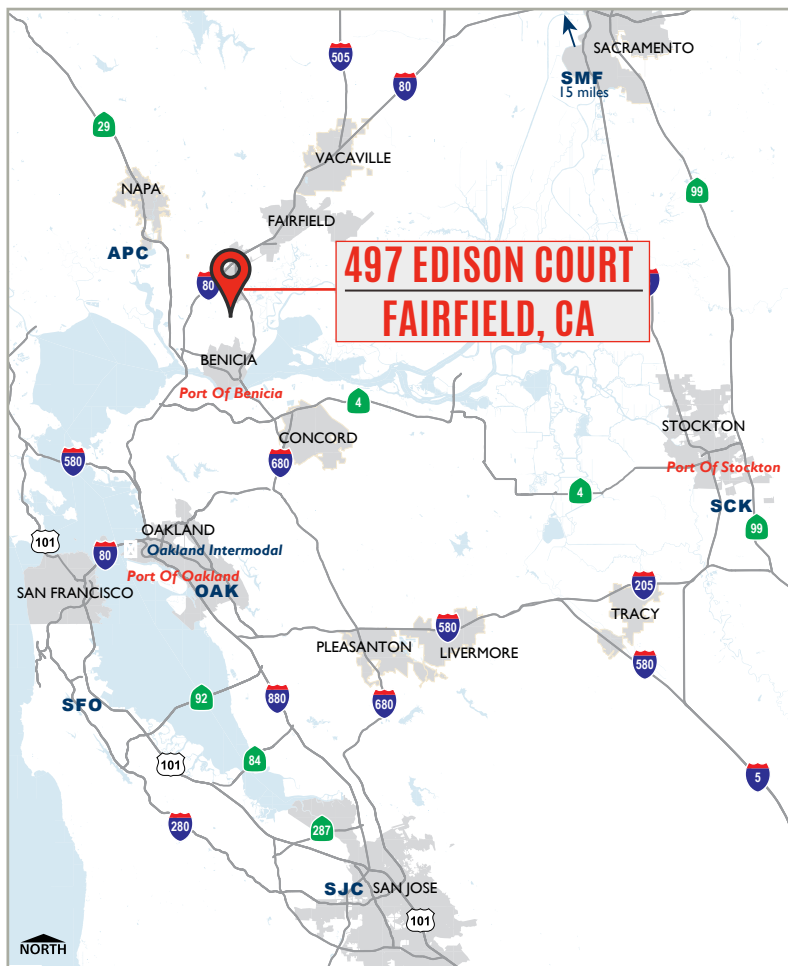
### 497 Edison Court, Suite A, Fairfield, CA

- ±7,200 SF Warehouse Space for Lease
- ±2,000 SF Office Space
- 22' - 24' Clear Height in Warehouse Area
- 200 Amps of 120/208 Volt, Electrical Service
- One (1) 12' x 14' Grade-Level Loading Door

### Location Details:

495, 497, 499 Edison Court is a uniquely well-located and highly-visible multi-tenant light industrial property in the Cordelia Industrial Park at the intersection of Interstates 80, 680 and Highway 12.

Located midway between San Francisco / Oakland and Sacramento, the Property has excellent access to Napa and Solano Counties and the surrounding Bay Area. The buildings offers 20'-24' clear heights, convenient parking, and flexible floor plans.



Jones Lang LaSalle Brokerage, Inc. RE Lic# 01856260

To Schedule a Tour or For More Information, Please Contact:



**CHRIS NEEB**  
chris.neeb@jll.com  
(707) 495 7777  
RE License No: 01324612

**MATT BRACCO**  
matt.bracco@jll.com  
(925) 200 3537  
RE License No: 01185434

**GLEN DOWLING**  
glen.dowling@jll.com  
(707) 227 7800  
RE License No: 00890450

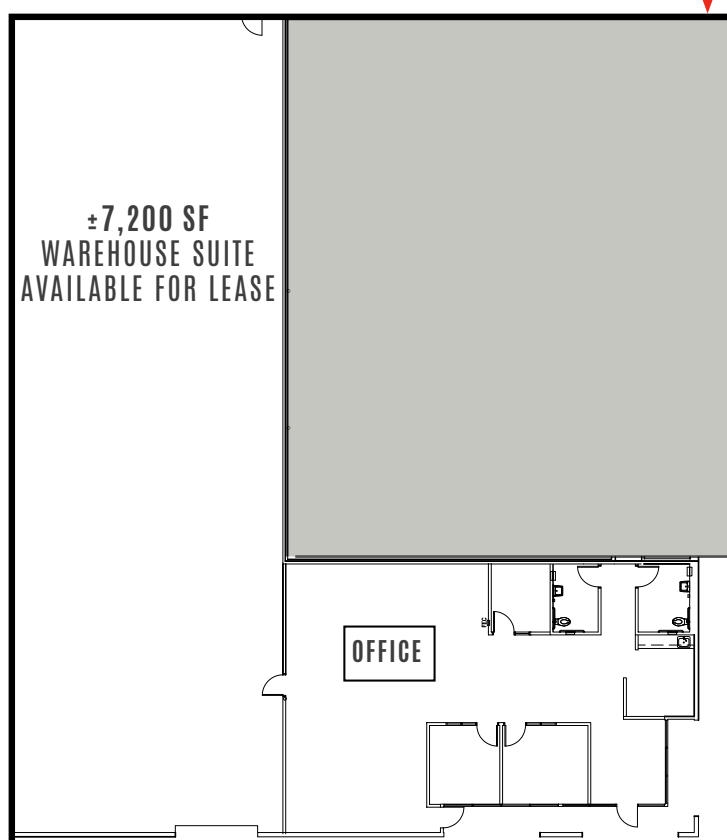
FOR LEASE

4 9 7

EDISON COURT

## SITE PLAN

Suite A  $\pm 7,200$  SF



**CHRIS NEEB**  
chris.neeb@jll.com  
(707) 495 7777  
RE License No: 01324612

**MATT BRACCO**  
matt.bracco@jll.com  
(925) 200 3537  
RE License No: 01185434

**GLEN DOWLING**  
glen.dowling@jll.com  
(707) 227 7800  
RE License No: 00890450



4 9 7

EDISON COURT



**CHRIS NEEB**  
[chris.neeb@jll.com](mailto:chris.neeb@jll.com)  
 (707) 495 7777  
 RE License No: 01324612

**MATT BRACCO**  
[matt.bracco@jll.com](mailto:matt.bracco@jll.com)  
 (925) 200 3537  
 RE License No: 01185434

**GLEN DOWLING**  
[glen.dowling@jll.com](mailto:glen.dowling@jll.com)  
 (707) 227 7800  
 RE License No: 00890450

Although information has been obtained from sources deemed reliable, neither Owner nor JLL makes any guarantees, warranties or representations, express or implied, as to the completeness or accuracy as to the information contained herein. Any projections, opinions, assumptions or estimates used are for example only. There may be differences between projected and actual results, and those differences may be material. The Property may be withdrawn without notice. Neither Owner nor JLL accepts any liability for any loss or damage suffered by any party resulting from reliance on this information. If the recipient of this information has signed a confidentiality agreement regarding this matter, this information is subject to the terms of that agreement. ©2025. Jones Lang LaSalle IP, Inc. All rights reserved. Jones Lang LaSalle Brokerage, Inc. RE Lic# 01856260