



SANTA MONICA

POST OFFICE



1248 5TH STREET

A historically restored creative space



Jones Lang LaSalle Brokerage, Inc., Real estate license #01856260

DELIVERING EXCELLENCE

About The Property

Reimagined with precision and care, Santa Monica Post Office is now unveiled as the city's newest workspace for creativity and inspiration. The multi-level architectural landmark is surrounded by Downtown Santa Monica's most desired amenities, shops, restaurants and attractions. The SMPO features grand interiors and collaborative spaces meant to fuel tenants looking to write a new iconic story at one of the city's most desired locations.



POST OFFICE

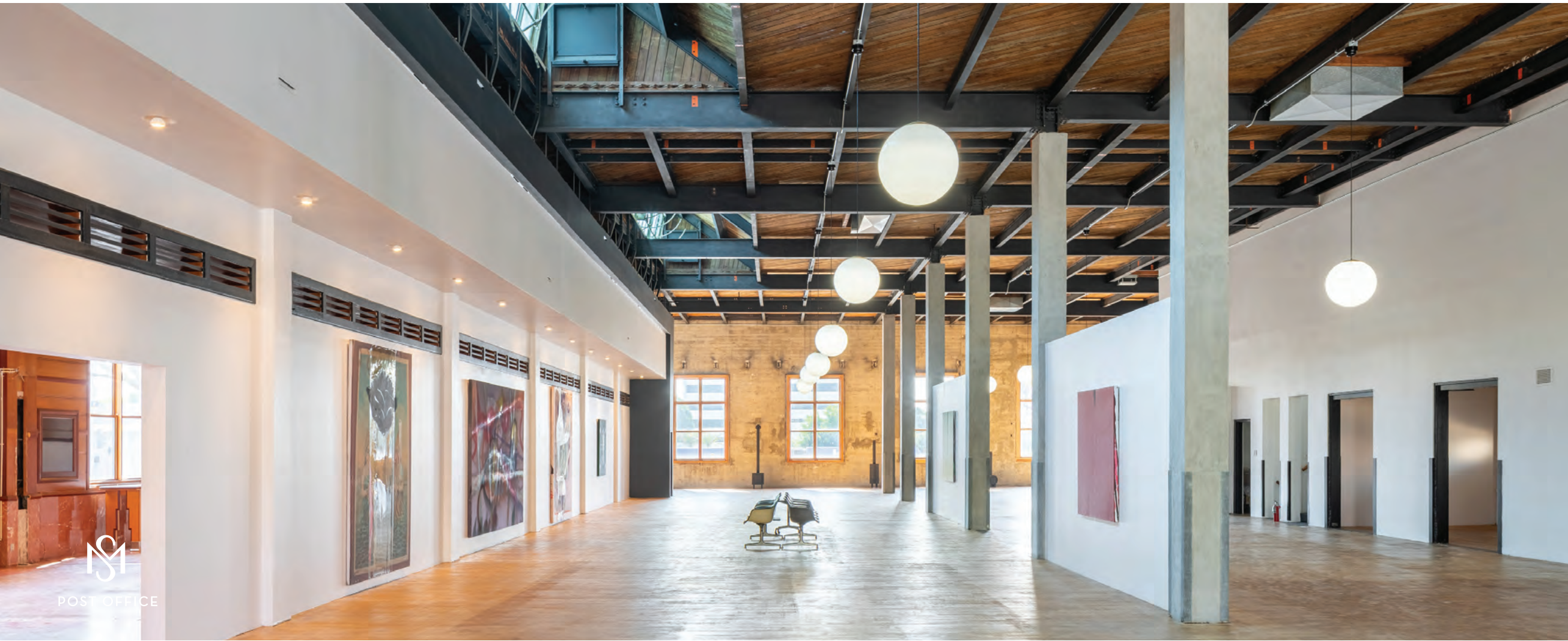


POST OFFICE

About The Property

YOUR NEXT POST IS RIGHT HERE

Opportunity strikes in history-making ways at 1248 Fifth Street. The iconic property offers approximately **15,000 to 37,642 RSF** of creative office opportunity with a potential **±2,941 RSF mezzanine**.



Premier Amenities & Access

Walk to
Palisades Park
and Santa Monica
Beach

2 blocks from
iconic 3rd Street
Promenade retail
hub & farmers'
market

3 blocks to the
Expo Line Santa
Monica station

**87 secure on-site
parking spaces &**
access to 9 city
parking structures
within blocks

Large private
covered
outdoor deck

An Architectural Treasure

Iconic, fully restored
office building in
the heart of Santa
Monica

PWA (Public Works
Administration)
Modern architecture
style

Constructed to
depict permanence,
stability and
authority

Quality materials
and symmetrical
design

Exceptionally High Ceiling

Ground Level
floor to wood
ceiling:
22 ft 1 inch

Ground Level
floor to pitched
skylight area:
28 ft 10 inches

Ground Level
Historic Lobby:
16 ft 2 inches

Mezzanine
(on west
elevation):
9 ft 10 inches

Lower Level:
10 ft 2 inches

Proposed Mezzanine (Entry Level View)



Lobby



Lower Level



Entry Level



Lobby

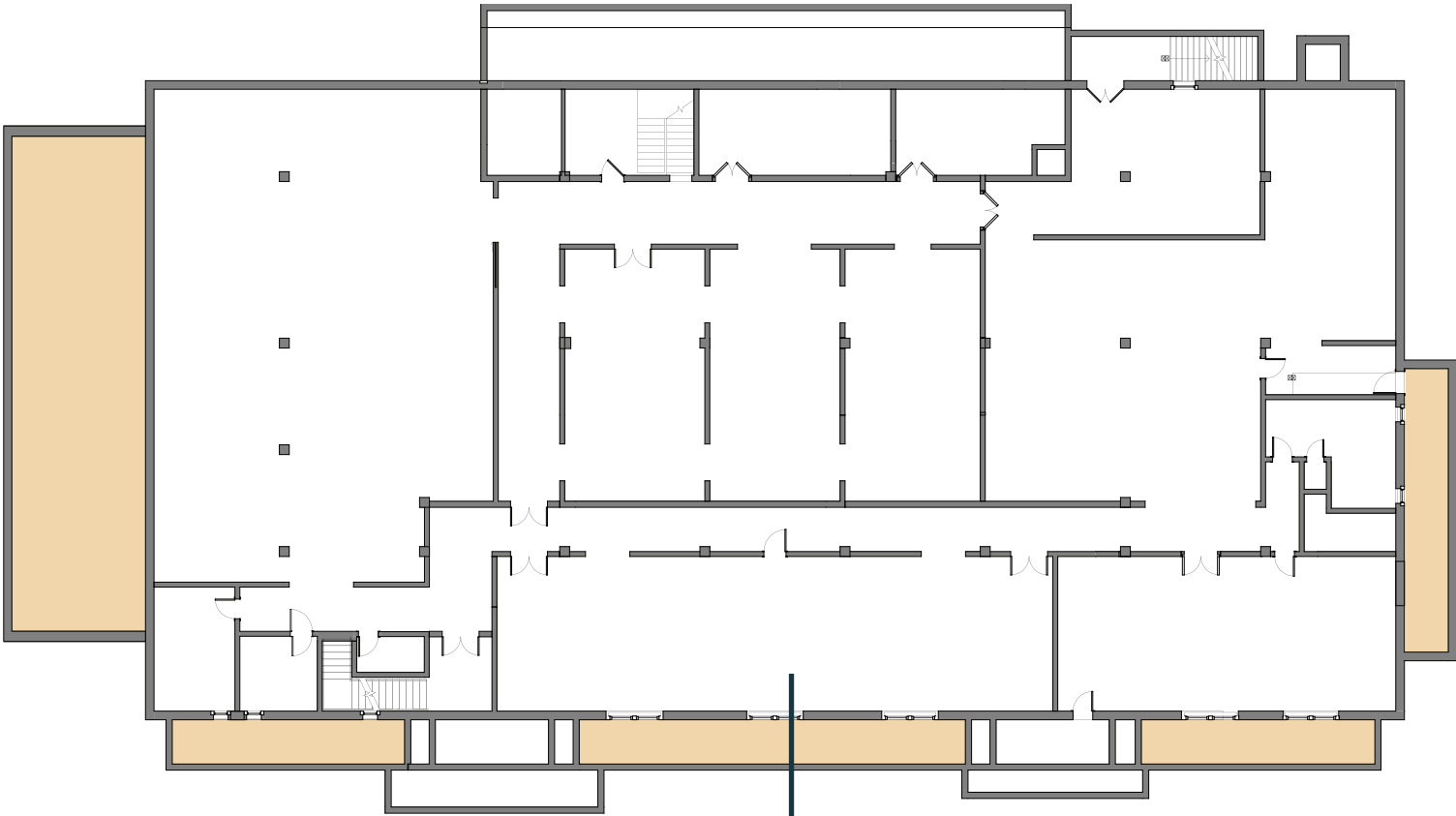


Lower Level



FLOOR PLANS

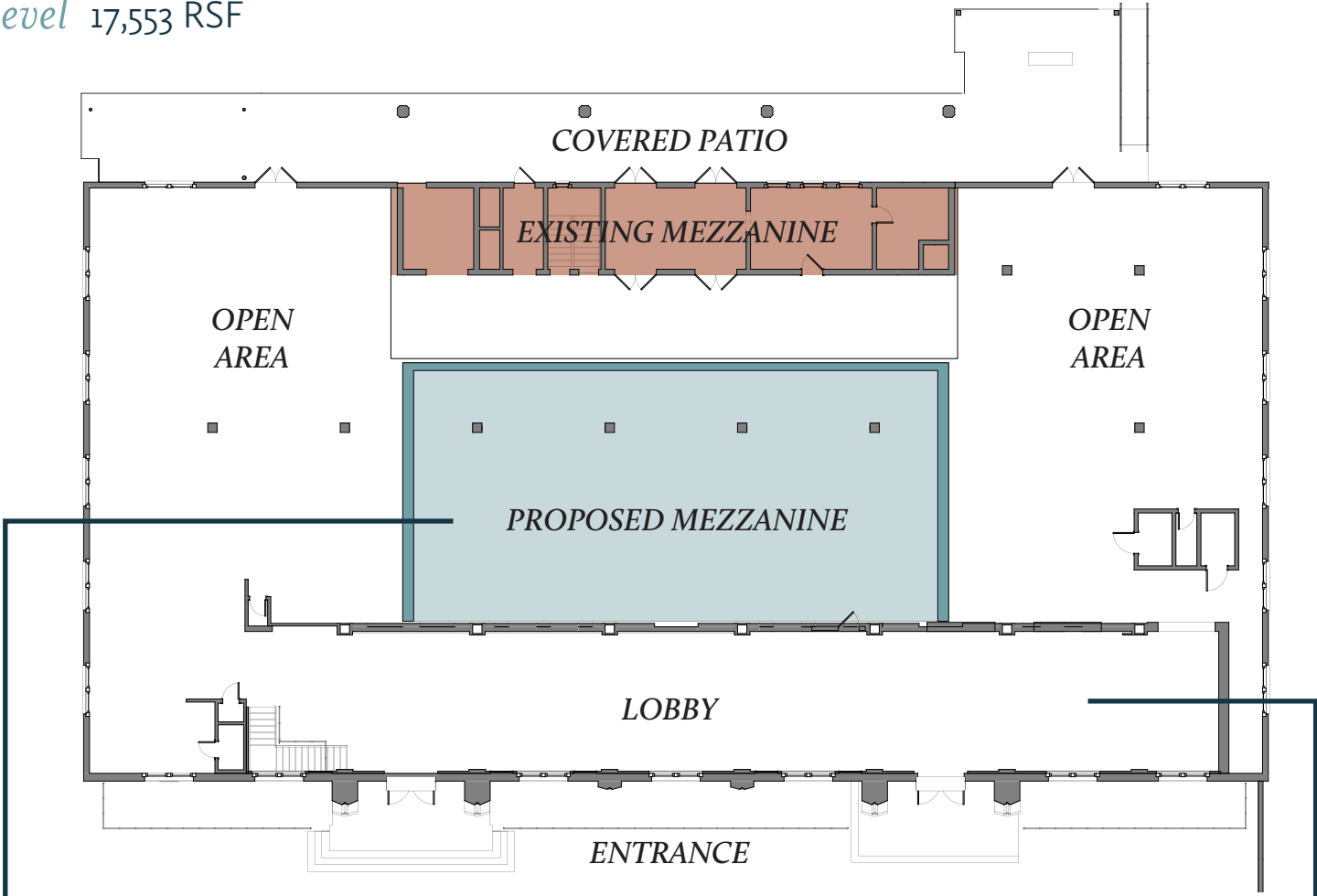
Lower Level 18,141 RSF



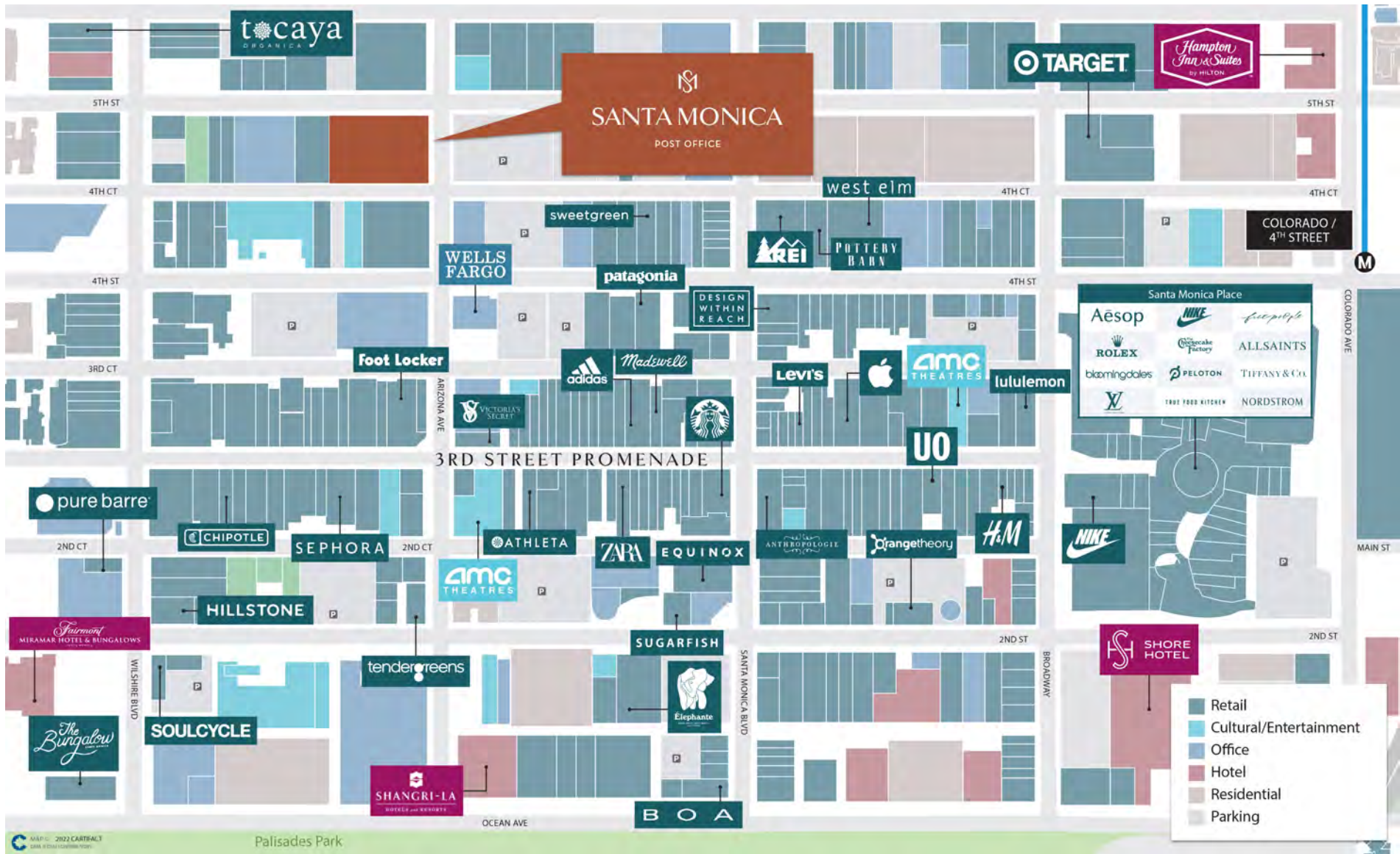
- Proposed Lightwell
- Proposed Mezzanine (2,941 SF±)
- Existing Mezzanine (1,948 SF)



Entry Level 17,553 RSF



AMENITY MAP



NEARBY TENANTS



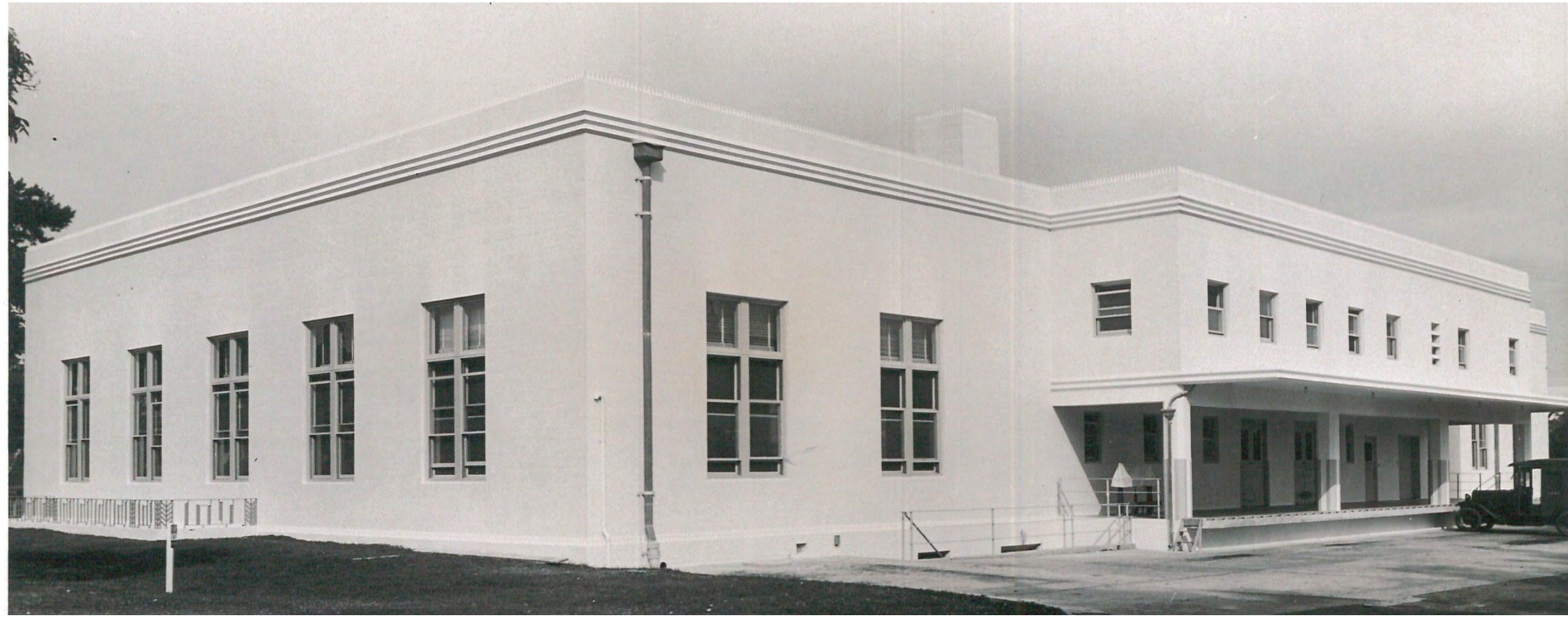
HISTORY OF THE PROPERTY

Santa Monica Post Office

The **Santa Monica Post Office building (SMPO)** represents the social, political, and architectural history of the city of Santa Monica. Situated at a prominent corner of 5th Street and Arizona Avenue in downtown Santa Monica, the SMPO at 1248 5th Street served residents and visitors for exactly 75 years. Designed and constructed between 1937 and 1938, the building is an excellent example of the Public Works Administration (PWA) Moderne architectural style, and embodies distinguishing design characteristics associated with that style. Under the New Deal program in the 1930s, some post offices were designed to reflect regional southern California traditions. The SMPO was particularly unique in that local architect Robert Dennis Murray served as its primary architect. With its monumental PWA Moderne style, and its Art Deco-influenced wave and water motifs in concrete and metal, the building continues to make quality architecture, construction, art and sculptural elements accessible to the public.

From its opening in 1938 until its closing in 2013, **SMPO** operated as a center for commerce and communication, served as a valued community meeting place, and disseminated information and ideas from around the world.

Today, the Santa Monica Post Office building is a designated City Landmark whose historic lobby and building exterior are protected and preserved, presenting the possibility of old as impetus for new.



POST OFFICE

1937. Construction of the Santa Monica Post Office (SMPO) building began in September 1937, after a Congressmen-led and community concerted effort to secure public funds.

1938 July 23. A dedication ceremony was held and the United States Postal Service (USPS) officially opened its doors to the Santa Monica community.

1944. During World War II, the SMPO building served as a valued community meeting place as the USPS hosted war bond and stamp drives to help fund and support the war.

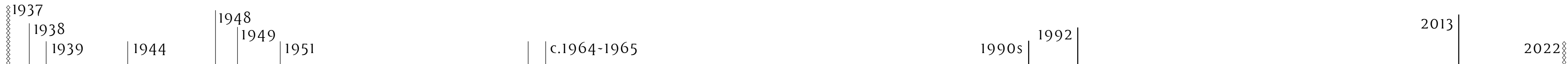
1948-1951. The post office remained active following the war: local girl scouts received commemorative stamps, the SMPO lobby bustled during the holidays, and USPS dutifully delivered.

c.1964-1965. During the civil rights movement, the SMPO building served as a backdrop for demonstrators advocating for an end to segregation at a nonviolent protest rally.

1950s-1990s. Modernization including additional parking, an accessible ramp, and larger service counters met a changing population with diverse needs, bringing SMPO into the 21st century.

2013 June 29. With the rise in digital communication, increased automation, and declining mail volumes, the USPS closed operations at SMPO, along with many others across the nation.

2022. Today, the SMPO building is a protected, present-day ‘Time Capsule’ whose walls are embedded with history, legacy, hidden original materials, and the possibility of old and new...





POST OFFICE

1248 FIFTH STREET
SANTA MONICA

Gabriel Brown

Executive Vice President
gabe.brown@am.jll.com
License #01441920 (310)
435-4344

Ben Silver

Senior Vice President
ben.silver@am.jll.com
License #01818061
+1 310 883 4311

Greg Astor

Associate
greg.astor@am.jll.com
License #02021777
+1 818 317 4477



Although information has been obtained from sources deemed reliable, neither Owner nor JLL makes any guarantees, warranties or representations, express or implied, as to the completeness or accuracy as to the information contained herein. Any projections, opinions, assumptions or estimates used are for example only. There may be differences between projected and actual results, and those differences may be material. The Property may be withdrawn without notice. Neither Owner nor JLL accepts any liability for any loss or damage suffered by any party resulting from reliance on this information. If the recipient of this information has signed a confidentiality agreement regarding this matter, this information is subject to the terms of that agreement. © 2025 Jones Lang LaSalle IP, Inc. All rights reserved.