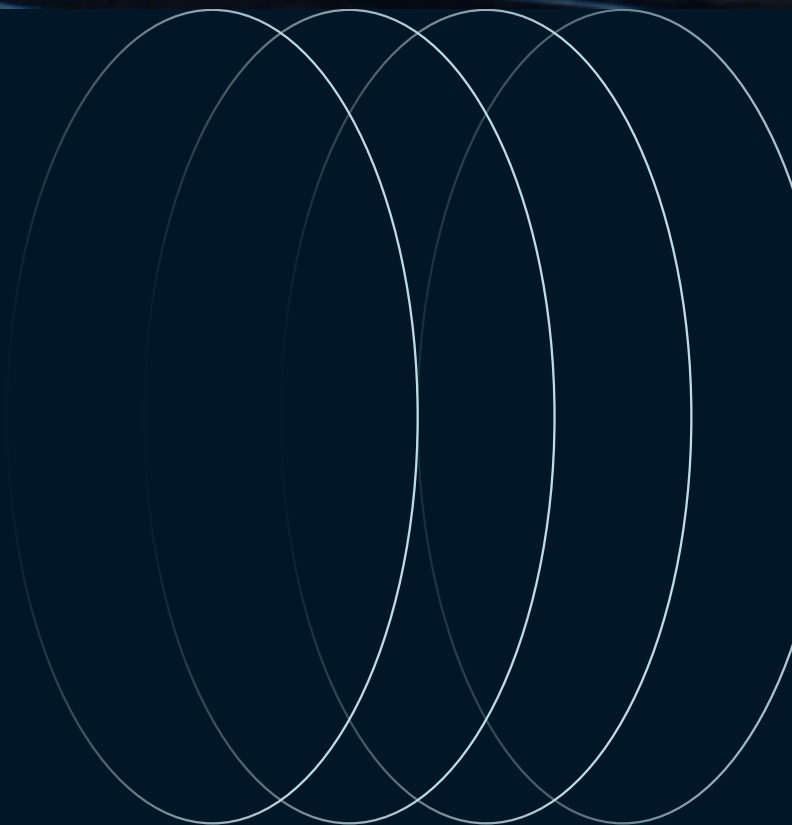
 **JLL** SEE A BRIGHTER WAY

# For lease

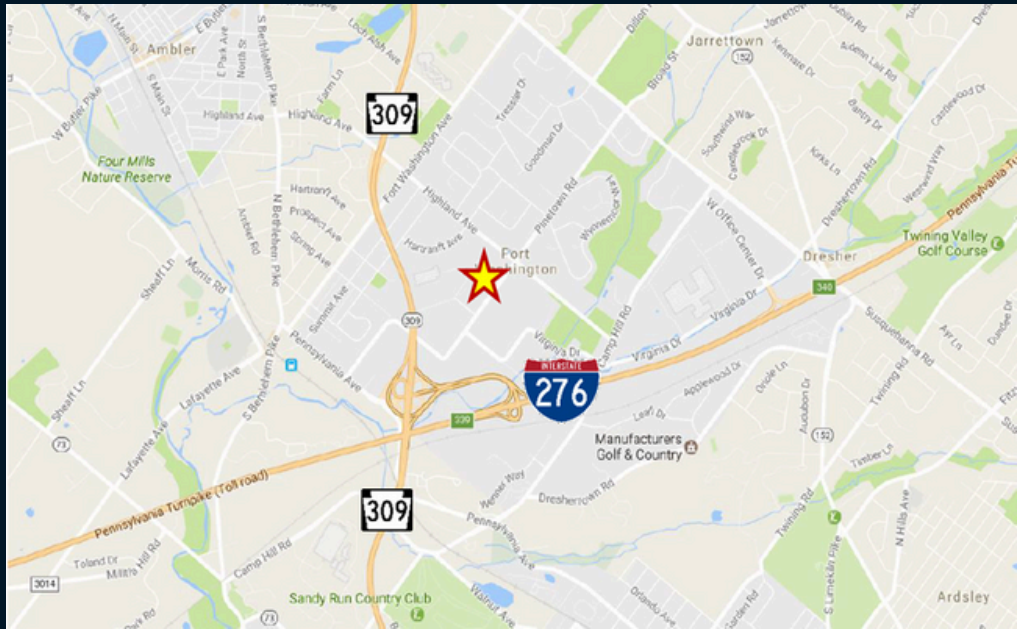
857 - 8,480 SF available



## Property specifications

- Suite 150: 4,244 SF (direct exterior entrance)
- Suite 170: 8,480 SF (divisible to 4,000 SF)
- Suite 210: 1,646 SF
- Suite 228: 857 SF
- Suite 250: 1,709 SF
- Rent: \$22.50/SF plus electric
- Full-service café with indoor and outdoor seating
- UPS/FedEx pick up
- Vending machine area
- Fitness center with lockers and showers
- Conference center/training room

## 550 Pinetown Road Fort Washington, PA



### Doug Newbert

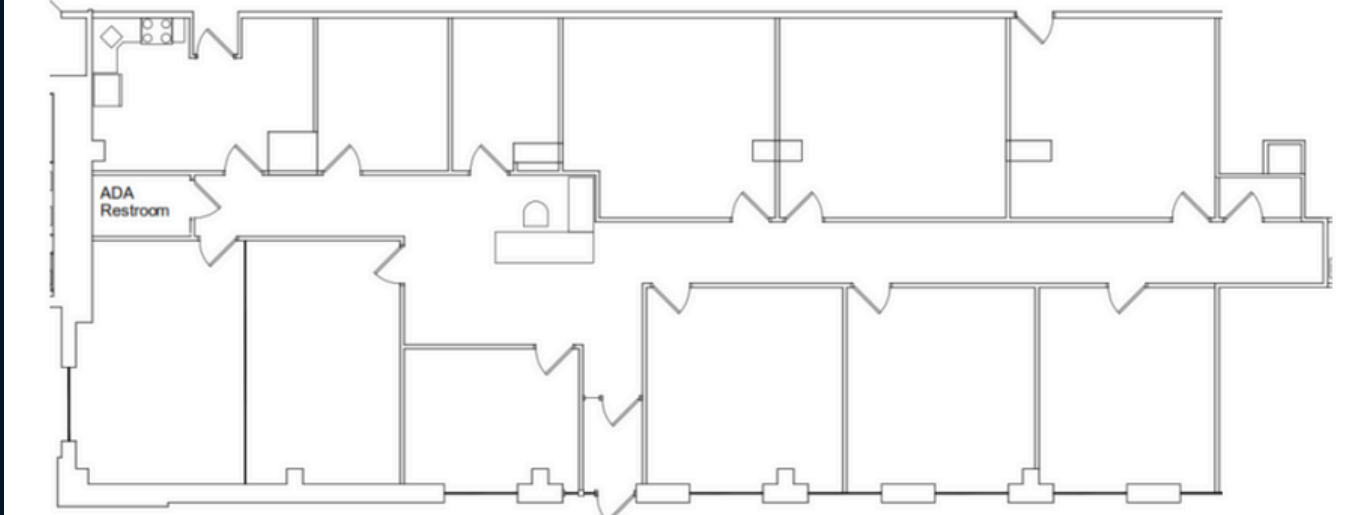
Executive Vice President  
doug.newbert@jll.com  
+1 610 249 2273

### Jones Lang LaSalle Brokerage, Inc.

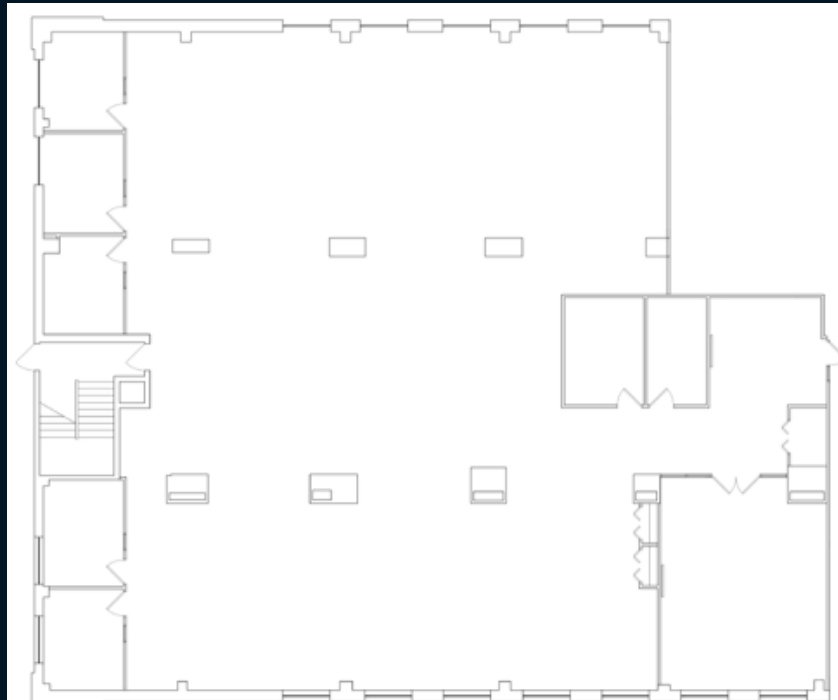
550 E. Swedesford Road, Suite 260  
Wayne, PA 19087  
+1 610 249 2255

# 550 Pinetown Road Fort Washington, PA

## Suite 150 - 4,244 SF



## Suite 170 - 8,480 SF



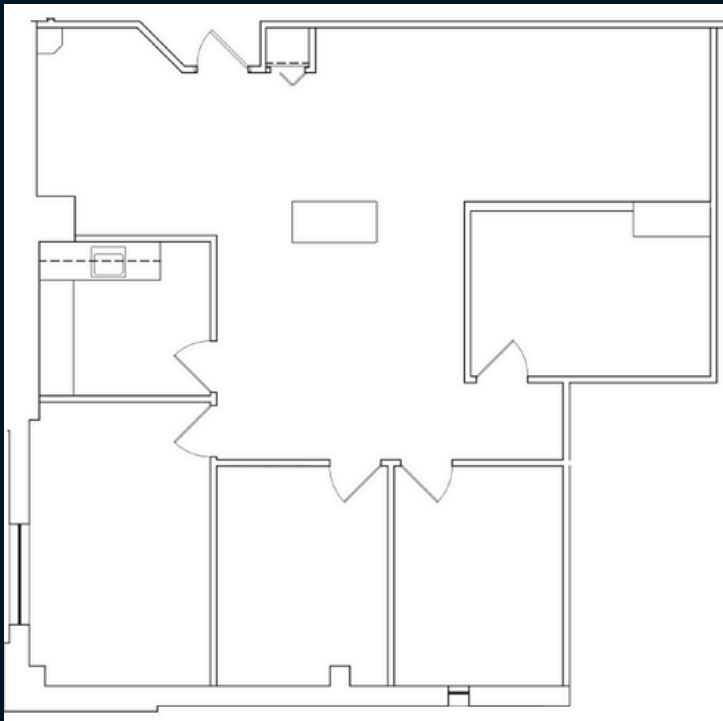
### Doug Newbert

Executive Vice President  
doug.newbert@jll.com  
+1 610 249 2273

### Jones Lang LaSalle Brokerage, Inc.

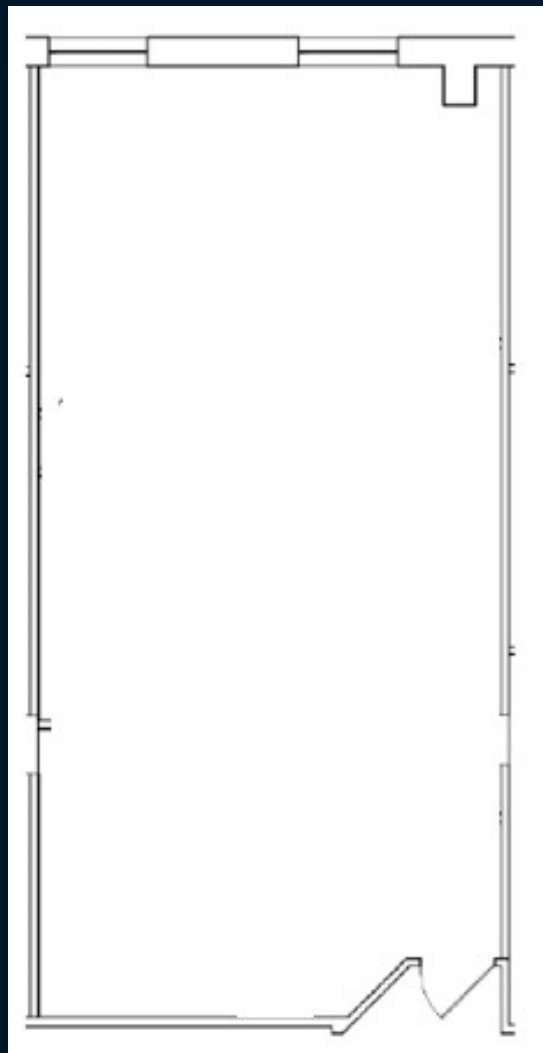
550 E. Swedesford Road, Suite 260  
Wayne, PA 19087  
+1 610 249 2255

## Suite 210 - 1,646 SF

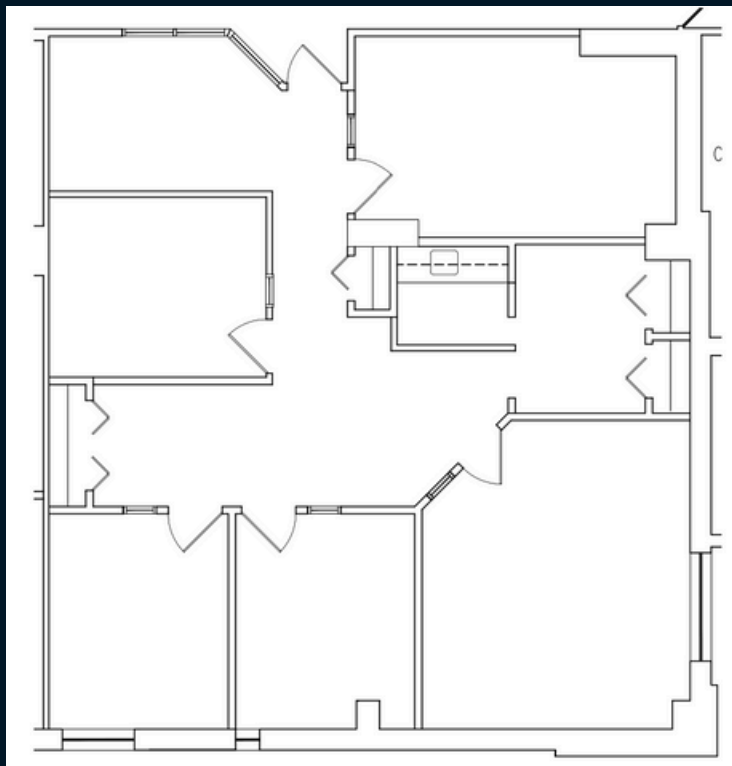


# 550 Pinetown Road Fort Washington, PA

## Suite 228 - 857 SF



## Suite 250 - 1,709 SF



### Doug Newbert

Executive Vice President

doug.newbert@jll.com

+1 610 249 2273

### Jones Lang LaSalle Brokerage, Inc.

550 E. Swedesford Road, Suite 260

Wayne, PA 19087

+1 610 249 2255