



For lease

Premier office space
available in Urbandale

**3809 109th Street
Urbandale, IA 50322**

Property overview

Availability:

- 1st floor:
 - 1,184 RSF
 - 184 RSF
 - 2,073 RSF
 - 2,572 (Sublease through 12/31/26)
- 2nd floor: 2,855 RSF

Lease rate: \$13.50 Modified Gross

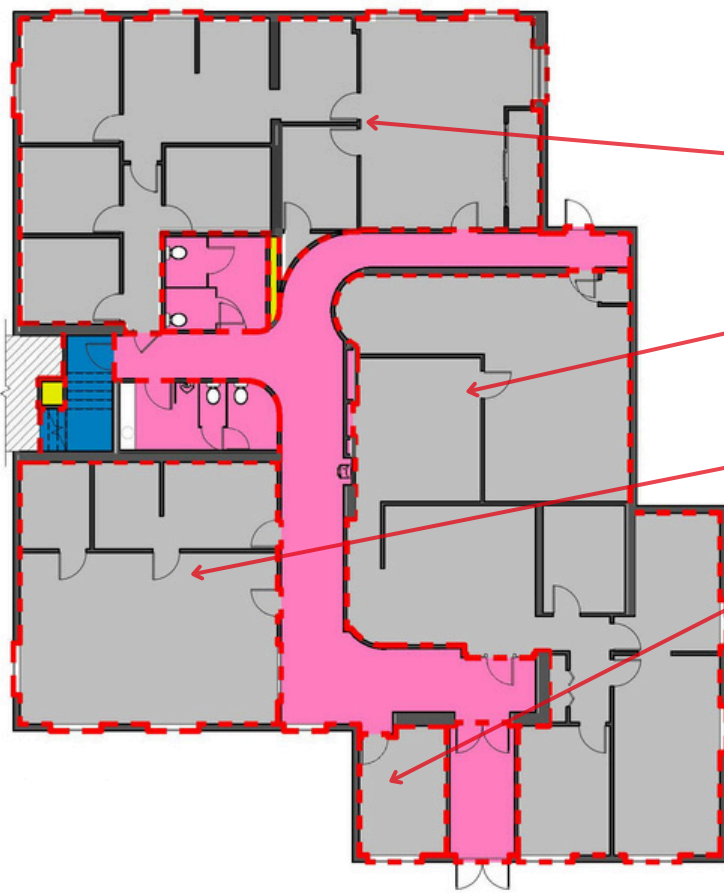
- Quick access to Interstate 80/35
- Located off Douglas Avenue
- Onsite parking available
- Located near multiple single-family and multi-family housing developments, retail, office, commercial, and hospitality.

Justin Lossner, CCIM, SIOR
Senior Managing Director
Justin.Lossner@jll.com
+1 515 371 0846

Lucas Hedstrom
Vice President
Lucas.Hedstrom@jll.com
+1 515 564 9269

jll.com/des-moines
Jones Lang LaSalle Americas, Inc.

Floor plan



First Floor

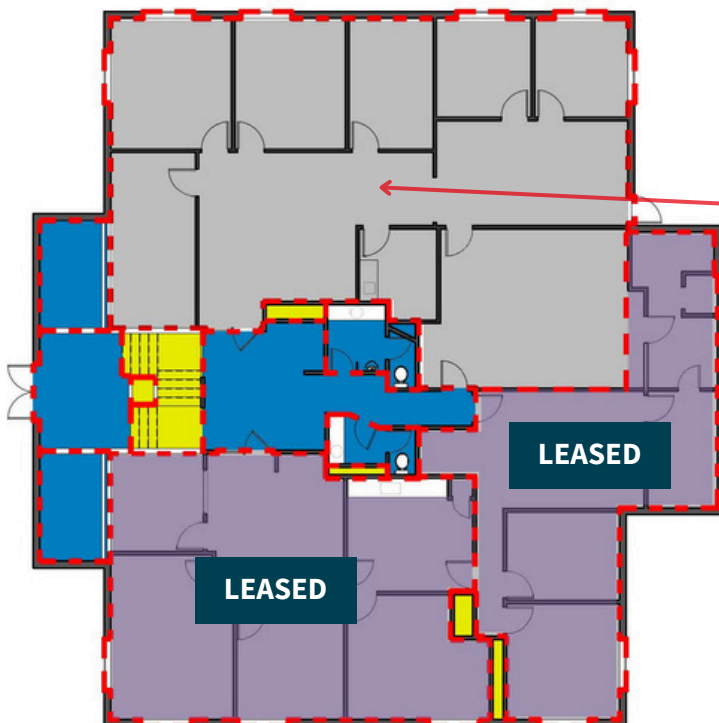
2,073 RSF

2,572 RSF

Sublease (12/31/26)

1,124 RSF

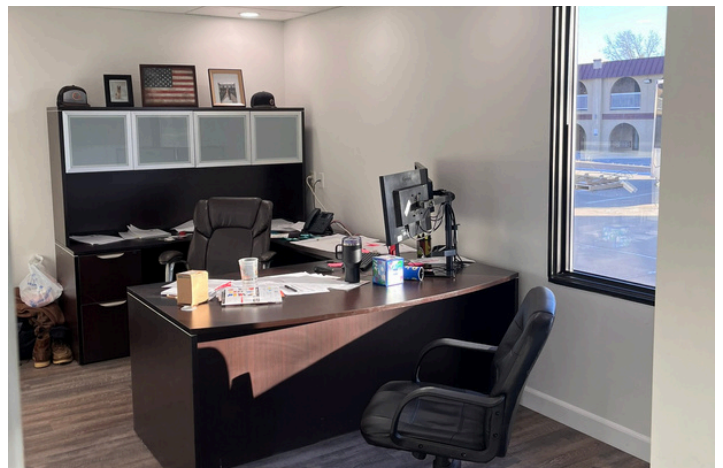
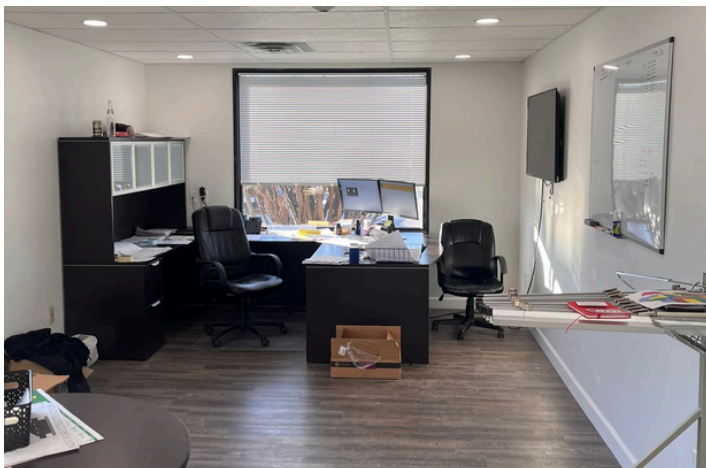
184 RSF



Second Floor

2,855 RSF

Images



For lease

3809 109th Street | Urbandale, IA 50322



Justin Lossner, CCIM, SIOR

Senior Managing Director

Justin.Lossner@jll.com

+1 515 371 0846

Lucas Hedstrom

Vice President

Lucas.Hedstrom@jll.com

+1 515 564 9269

jll.com/des-moines

Jones Lang LaSalle Americas, Inc.

