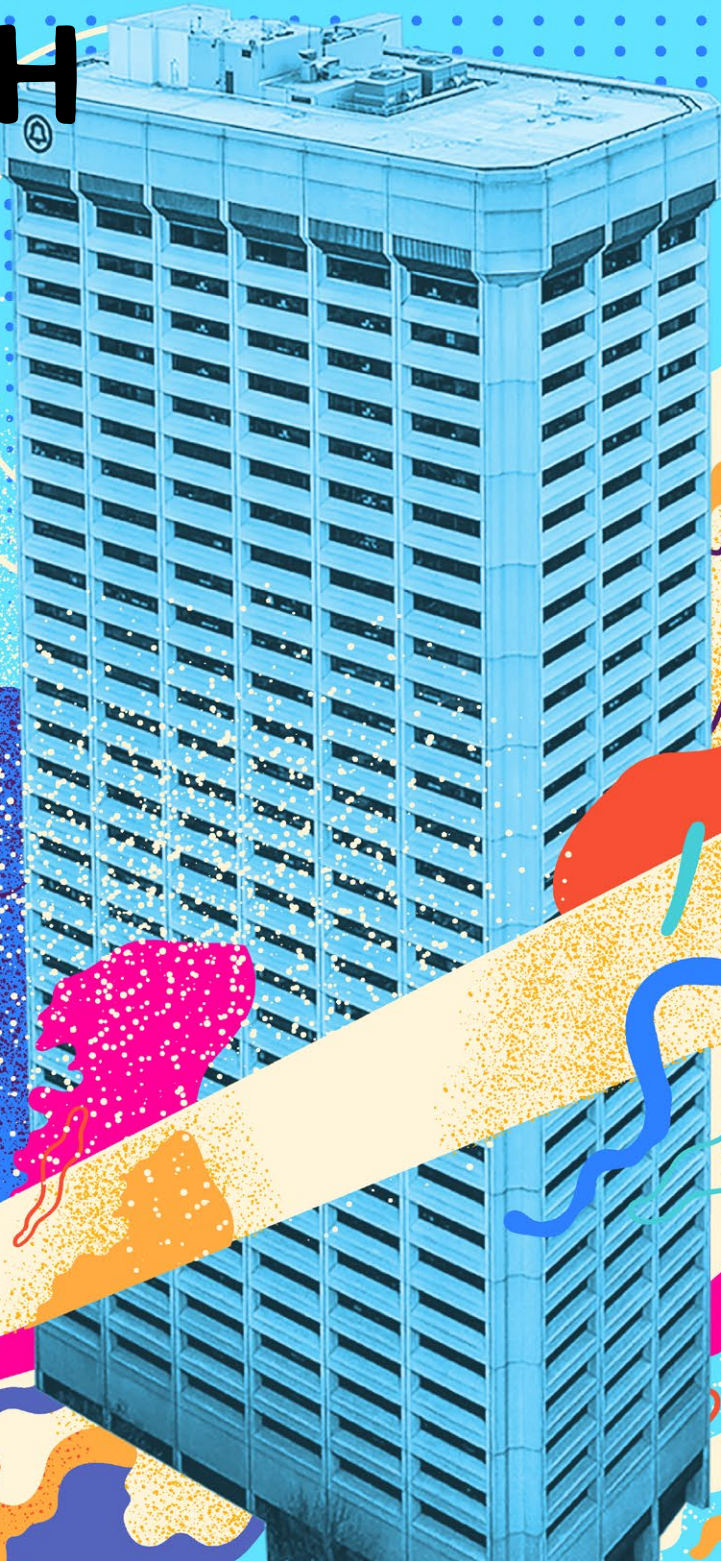


1600 SEVENTH

OFFICE FOR LEASE

1600 7th Ave, Seattle

1600seventh.com



IN THE MIDDLE OF **EVERYTHING**

1600 Seventh, a 33-story Class A Office Building, is located at the confluence of Seattle’s central business district, the retail core, and South Lake Union. Easy access to transit: I-5, Link light rail, South Lake Union streetcar, Bus and the Monorail.



Located in 1600 Seventh’s lobby, **Anchorhead Coffee** is a Seattle favorite artisanal coffee house



Certified in WELL and awarded LEED Gold



Extensive renovations were completed in 2022



Secure garage parking with EV stations



Amenity & transit-rich location; close to the new waterfront

IT’S ALL RIGHT HERE

On-site fitness center with showers, lockers and daily towel service

Secure on-site bicycle parking

Conference facilities with a smart board and additional screens

Landscaped outdoor seating

Retail Amenity Rich. Nordstrom, Club Monaco, Pacific Place Mall, Westlake Center Mall, all within a block

Six blocks walking to Pike Place Market, Seattle Ferries, and the new waterfront amenities

Transportation rich with quick access to all modes of transit



LOBBY



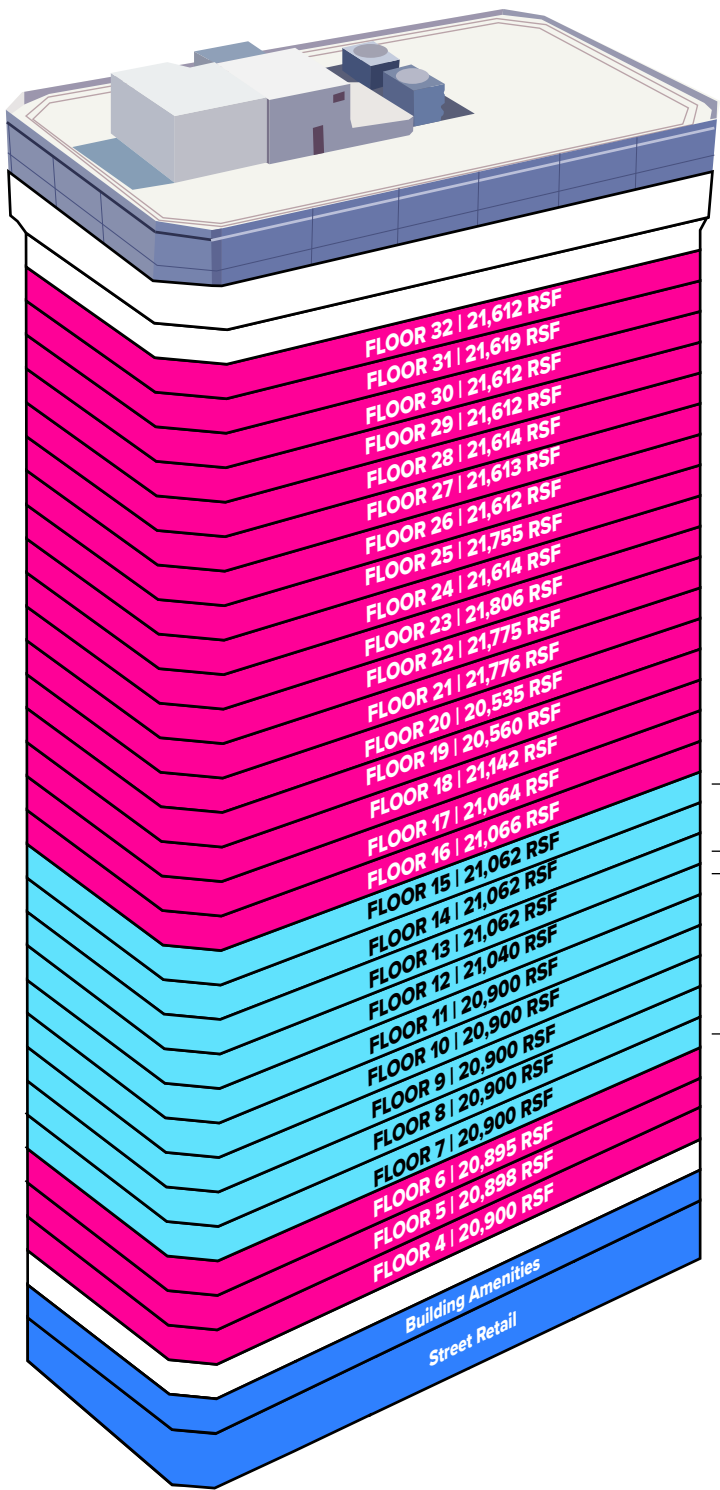
FITNESS CENTER



CONFERENCE FACILITY

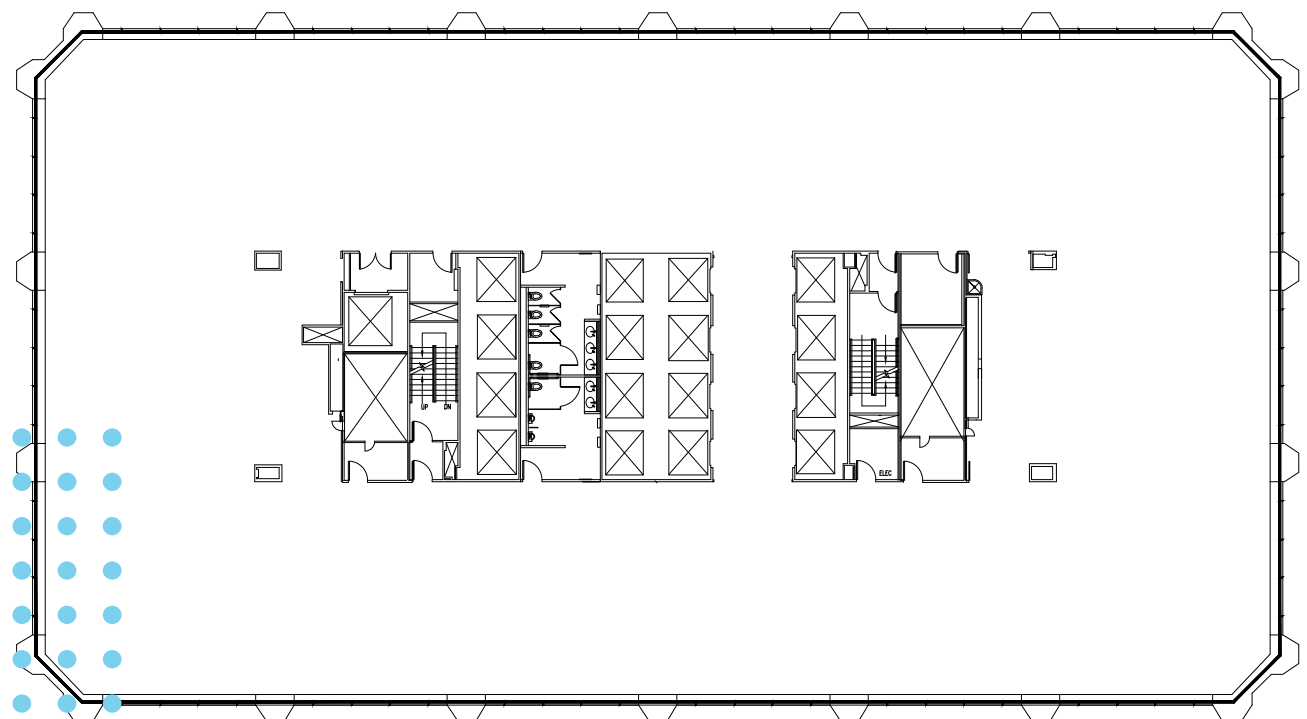
SPACE TO SUIT YOUR NEEDS

With flexible floor plates and minimal columns, ideal for a diverse range of tenant users. Whether you're seeking an open space that fosters innovation and collaboration, or private offices for a professional and confidential setting, our spaces can be customized to meet your specific requirements.



Delivered as shell

Built-out and ready to occupy



SPEC SUITE

21,000 RSF
Open space with minimal columns allows tenants to build a workspace that energizes their business.

Available

Leased

A WALKER'S PARADISE

in an amenity rich central location: just a block from the light rail with front-door access to 10 major bus lines and dozens more within a half mile. Close proximity to I-5.



1 block to Westlake Station



10 bus lines right outside



98 walk score



100 transit score

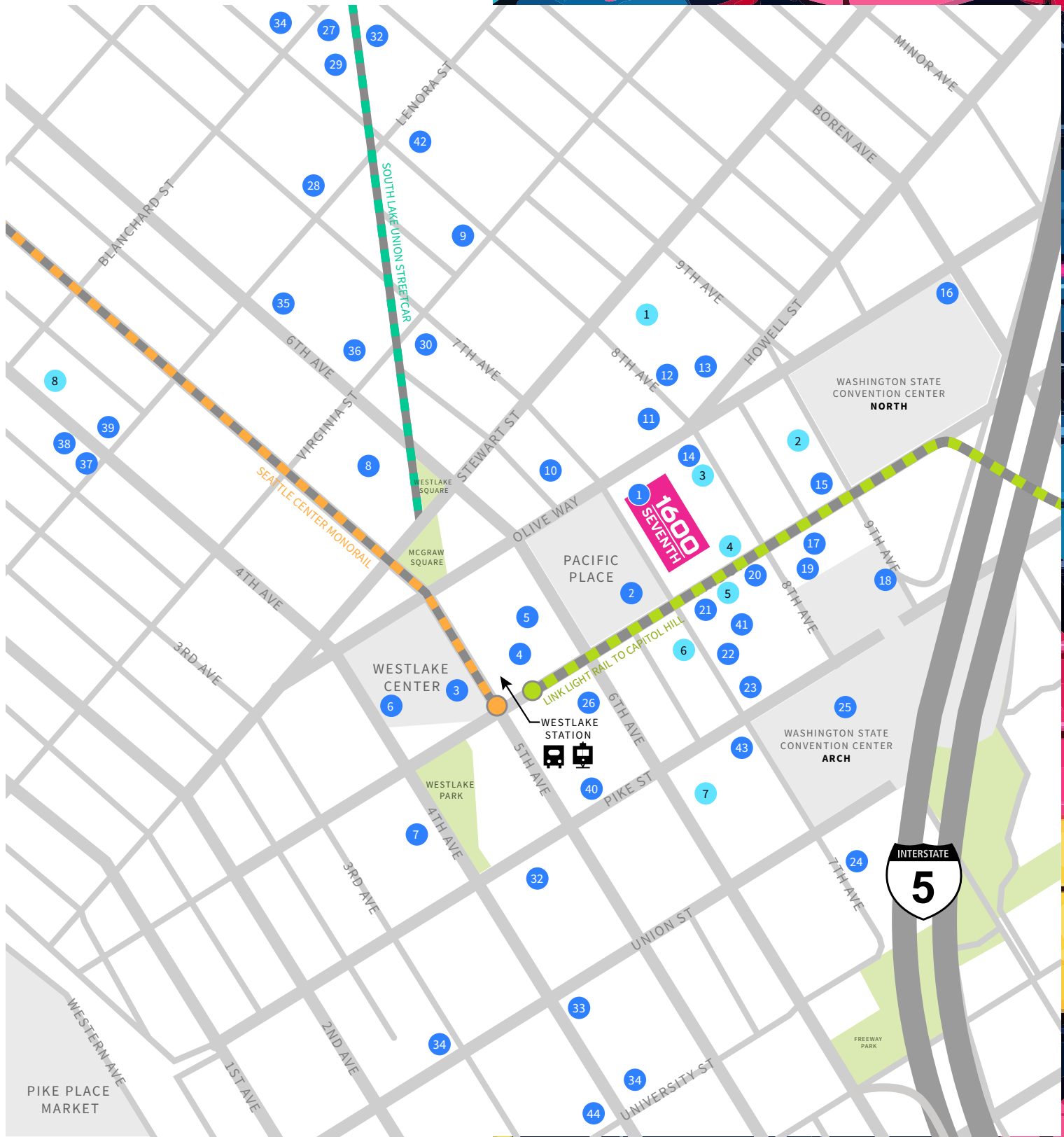
NEIGHBORHOOD AMENITIES

RESTAURANTS

- | | | |
|--|---------------------------|-------------------------|
| 1. Anchorhead Coffee | 12. Andare Kitchen & Bar | 29. Shake Shack |
| 2. Thai Ginger, Din Thi Fung, Pike Place Chowder, Johnny Rockets, Haidilao Hot Pot | 13. Daniel's Broiler | 30. Barolo Ristorante |
| 3. Andaluca Mediterranean, Pressed Juicery, CaliBurger | 14. TIDAL+ Seafood | 31. Sushi Kudasai |
| 4. Nordstrom Cafe, Habitant | 15. The Carlile Room | 32. Mendocino Farms |
| 5. Evergreen Salad | 16. Wild Rye | 33. Fogo de Chao |
| 6. Asean Food Hall | 17. Dough Zone | 34. Wild Ginger |
| 7. Yard House | 18. Daawat Indian | 35. Potbelly Sandwiches |
| 8. Relish Burger Bistro | 19. Caffe Ladro | 36. Marination |
| 9. Urban Sushi Kitchen | 20. Ruth's Chris | 37. Dahlia Bakery |
| 10. Cafe Umbria | 21. The Elliott Bar | 38. Serious Pie |
| 11. Mr. West Cafe | 22. NYC Deli Market | 39. Lola |
| | 23. Cheesecake Factory | 40. Monorail Espresso |
| | 24. Evergreen Salad | 41. Kas Sushi |
| | 25. Juicy Cafe | 42. Sweetgreen |
| | 26. New Saigon Restaurant | 43. Alder & Ash |
| | 27. Butcher's Table | 44. Capital Grille |
| | 28. Casa Antiguo | |

HOTELS

- | | | |
|----------------------|--------------------|-------------------|
| 1. Hyatt Regency | 4. Paramount Hotel | 7. Sheraton Hotel |
| 2. WorldMark Seattle | 5. Grand Hyatt | 8. Warwick |
| 3. Hyatt at Olive 8 | 6. Hotel Theodore | |





LLOYD LOW

+1 206 607 1796

LLOYD.LOW@JLL.COM

CLEITA HARVEY

+1 206 607 1794

CLEITA.HARVEY@JLL.COM

BAILEY HALLIS

+1 206 777 5203

BAILEY.HALLIS@JLL.COM



Although information has been obtained from sources deemed reliable, neither Owner nor JLL makes any guarantees, warranties or representations, express or implied, as to the completeness or accuracy as to the information contained herein. Any projections, opinions, assumptions or estimates used are for example only. There may be differences between projected and actual results, and those differences may be material. The Property may be withdrawn without notice. Neither Owner nor JLL accepts any liability for any loss or damage suffered by any party resulting from reliance on this information. If the recipient of this information has signed a confidentiality agreement regarding this matter, this information is subject to the terms of that agreement. © 2024 Jones Lang LaSalle IP, Inc. All rights reserved.