

1675 Third Avenue

Upper East Side
Retail Sublease Opportunity



Location

Between East 93rd and
East 94th Street

Size

Ground Floor: 8,592 sf
Lower Level: 5,388 sf (non-selling)
Total: 13,980 sf

Frontage

201' on Third Avenue

Site Status

Available; formerly Duane
Reade store #14327

Sublease Term

3/31/2031

Asking Rent

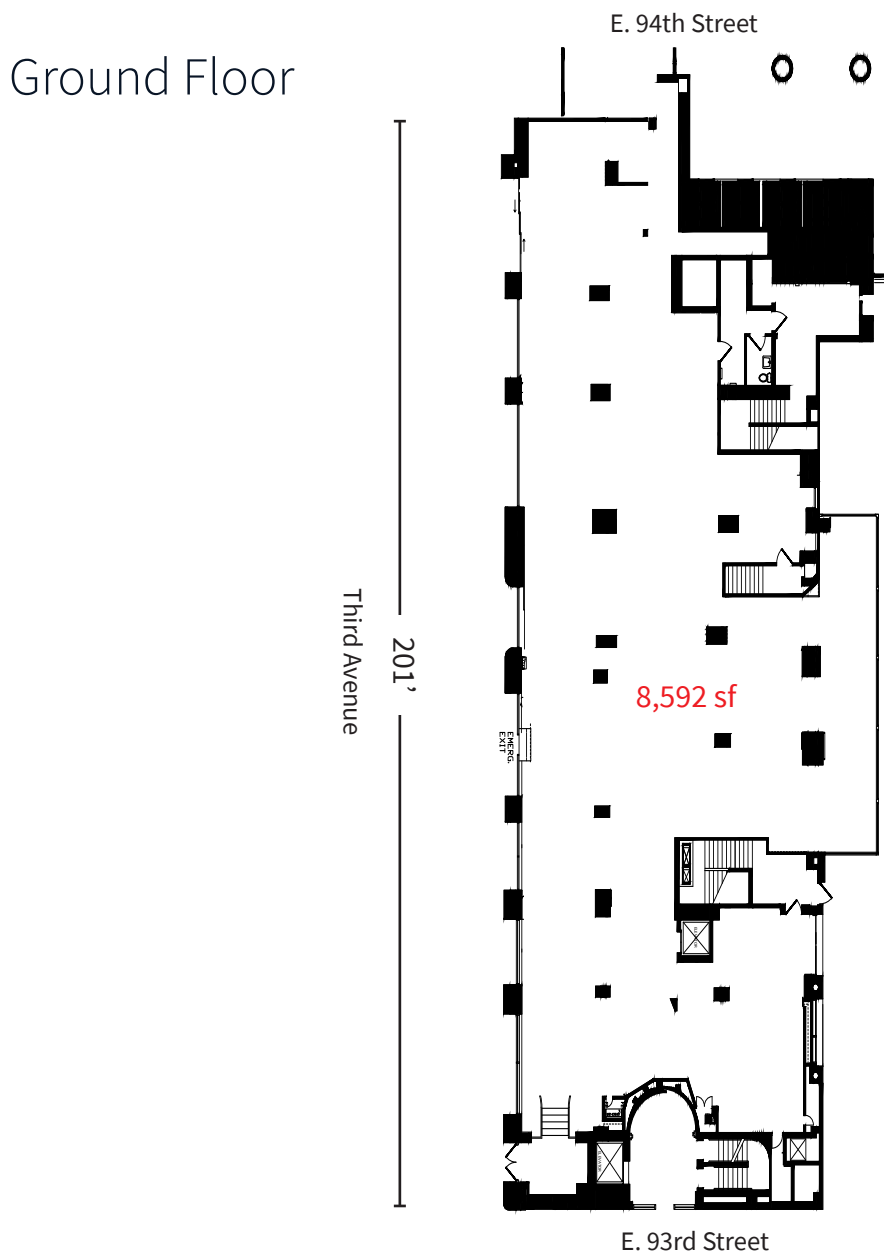
Upon request

Comments

- Full block frontage retail opportunity in a prime residential area of Manhattan
- Located within two blocks of the Q and 6 subway stops
- In close proximity to The Mount Sinai Hospital and NYC Health + Hospital

Neighboring Co-Tenants

- Starbucks
- Equinox
- CVS Pharmacy
- New York Sports Club
- The UPS Store
- Dunkin'
- Westside Market NYC



Floor plans not to scale