

# 16,058 SF

Industrial Space For Lease

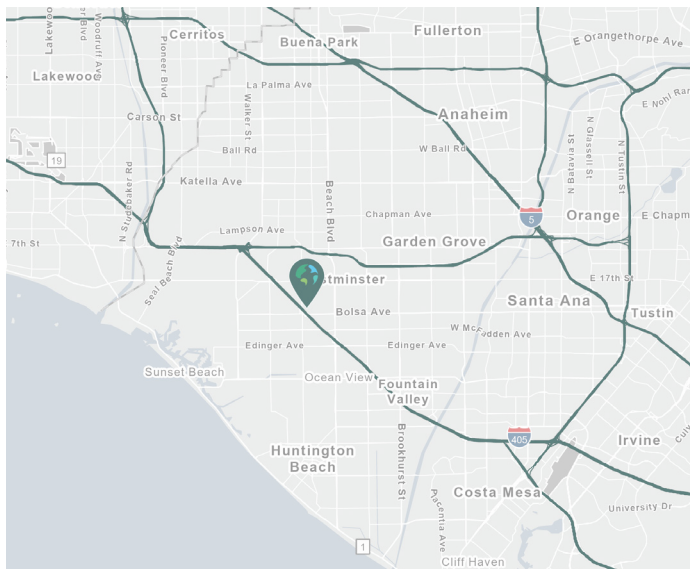


## Prologis West Orange County Business Center



7171 Fenwick Lane

Westminster, CA 92683



### LOCATION

- Immediate access to the 405 Freeway
- Strategic West Orange County location with skilled and diversified work force
- Close to retail/dining amenities at the Westminster Mall and Bella Terra
- Part of a larger 265,678 s.f. professionally managed business park

### FACILITY

- ±16,058 square foot building (divisible)
- ±11,074 square feet of warehouse space
- ±4,984 square feet of single-story office space
- 4 ground-level loading door
- 18' warehouse clearance
- 800 Amps, 120/208 volts (to be verified)
- Fire sprinklers
- ±2.1 parking spaces per 1,000 s.f.
- Fenced yard area

### ADVANTAGES AND AMENITIES

- Access to the Prologis Essentials platform, which includes:
  - [Operations Essentials](#)
  - [Energy Essentials](#)
  - [Workforce Essentials](#)
  - [Mobility Essentials](#)
  - [Digital Essentials](#)

[www.prologis.com](http://www.prologis.com)

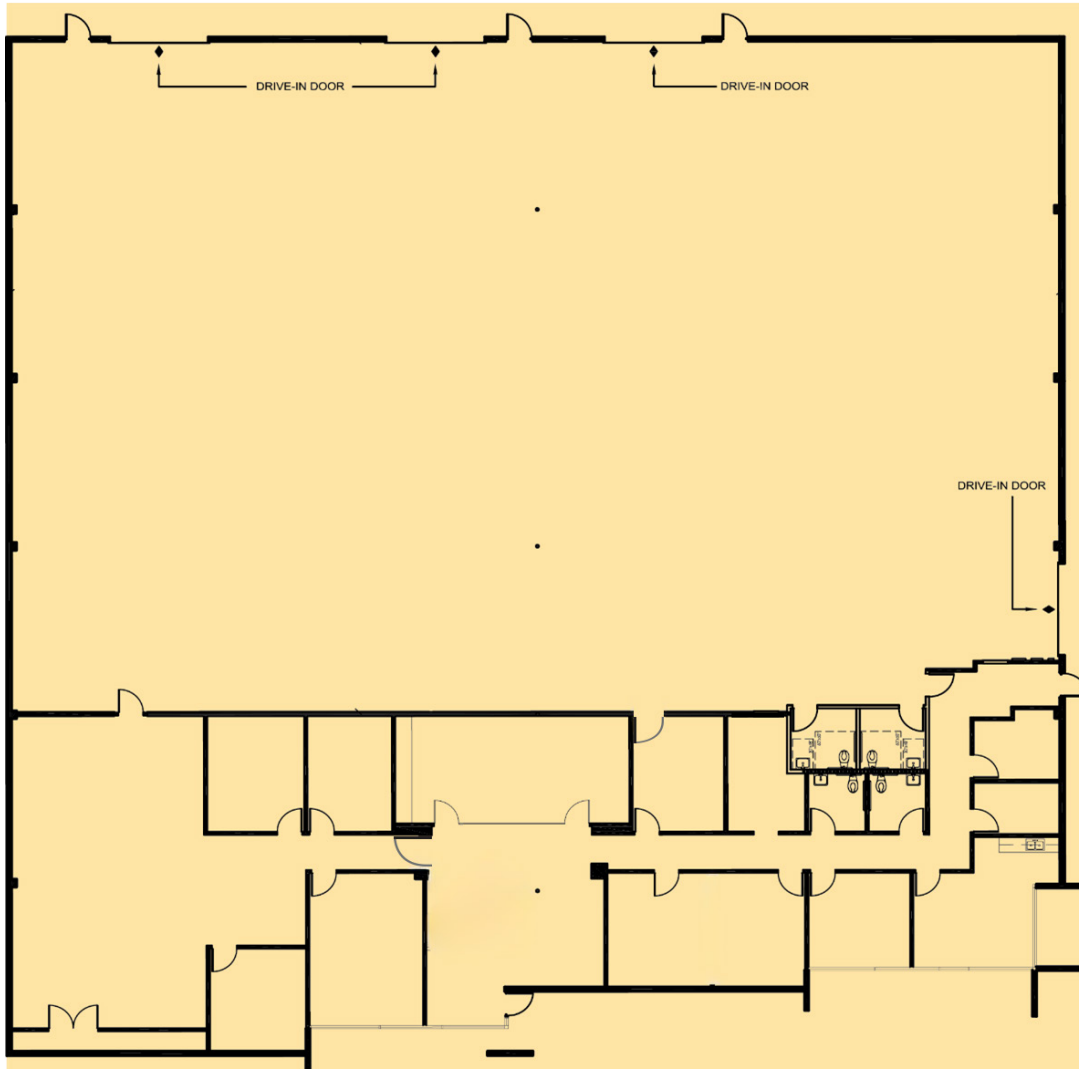
Your single-source service for efficient move-in and operations: [prologisessentials.com](http://prologisessentials.com)

# 16,058 SF

Industrial Space For Lease



## Prologis West Orange County Business Center



### JLL

Steve Wagner  
License #01314652  
steve.wagner@jll.com  
+1 949 885 2923  
17877 Von Karman Ave.,  
Suite 500  
Irvine, CA 92614  
www.jll.com

### JLL

Louis Tomaselli  
License #00904844  
louis.tomaselli@jll.com  
+1 949 885 2985  
17877 Von Karman Ave.,  
Suite 500  
Irvine, CA 92614  
www.jll.com

### JLL

Zach Niles  
License #01311756  
zach.niles@jll.com  
+1 949 885 2922  
17877 Von Karman Ave.,  
Suite 500  
Irvine, CA 92614  
www.jll.com

### Prologis

Parker Hutchison  
License #01875578  
phutchison@prologis.com  
+1 562 345 9209  
17777 Center Court Dr N.,  
Suite 100  
Cerritos, CA 90703  
www.prologis.com