

# 1540 MARKET STREET



**10,465 RSF Available**  
Inexpensive Space in Hayes Valley

**JEAN KO**

415-810-1914

[Jean.ko@jll.com](mailto:Jean.ko@jll.com)

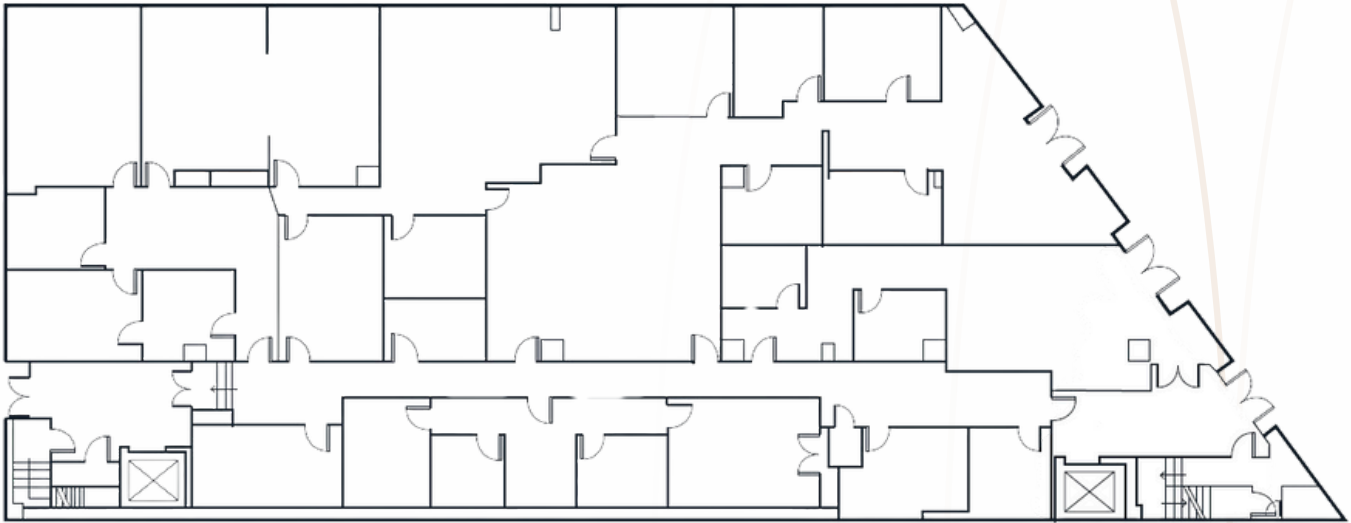
RE Lic# 01184706



# 1540 MARKET STREET

Term 12 - 24 Months | Asking \$16/ SF/ YR IG

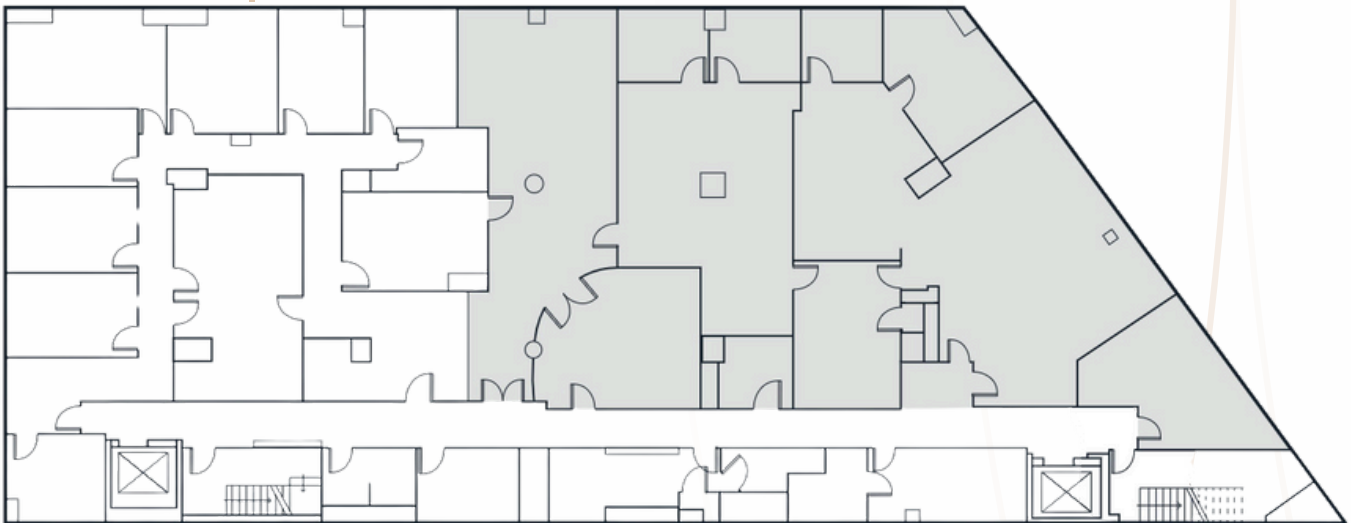
## Ground Floor | 1,069 - 6,960 RSF



### Space Details:

- Divisible to 1,069 rsf and 5,000 rsf
- 13 meeting rooms in place
- Kitchen

## 3rd Floor | 3,465 RSF



### Space Details:

- Divisible to 146 rsf, 245 rsf, and 3,074 rsf
- 12 meeting rooms
- Kitchen

**JEAN KO**

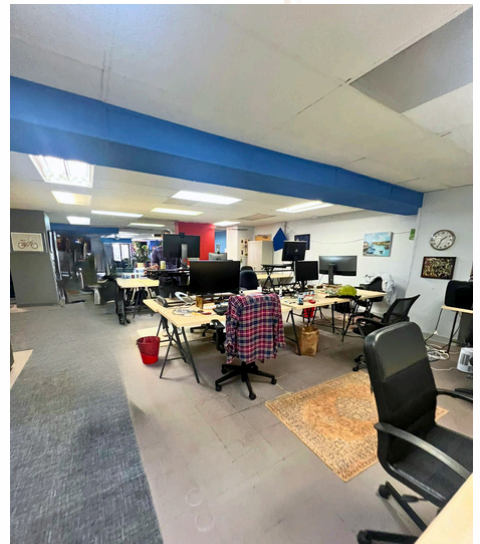
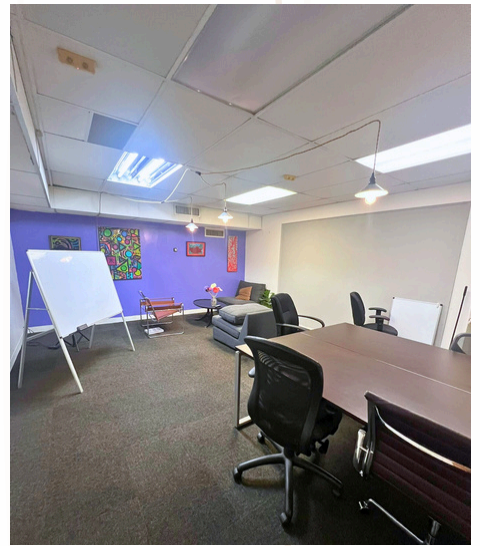
415-810-1914

Jean.ko@jll.com

RE Lic# 01184706



# 1540 MARKET STREET



**JEAN KO**

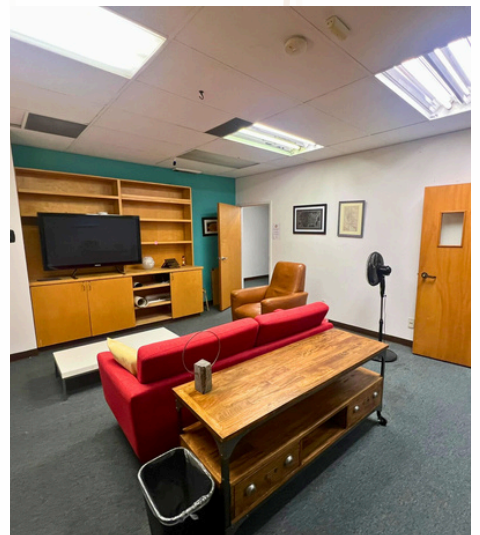
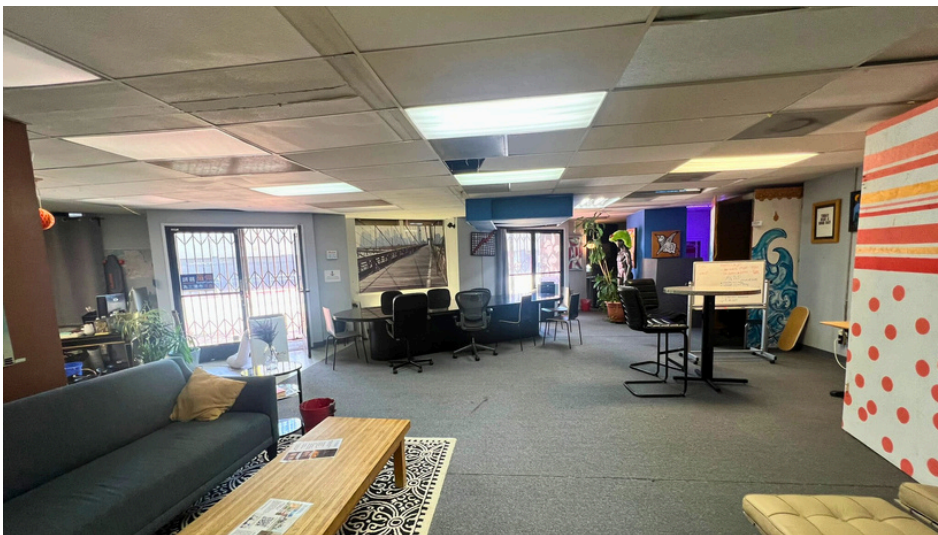
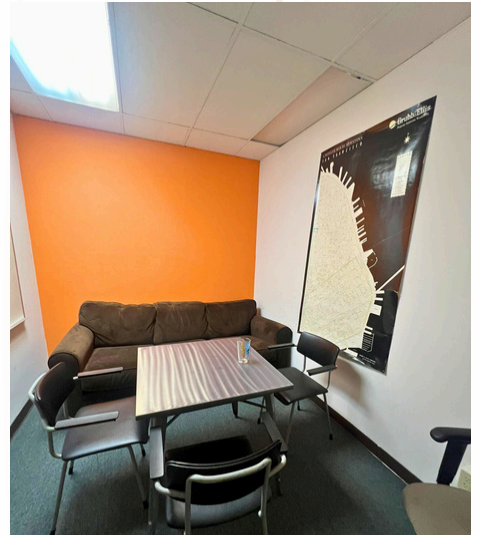
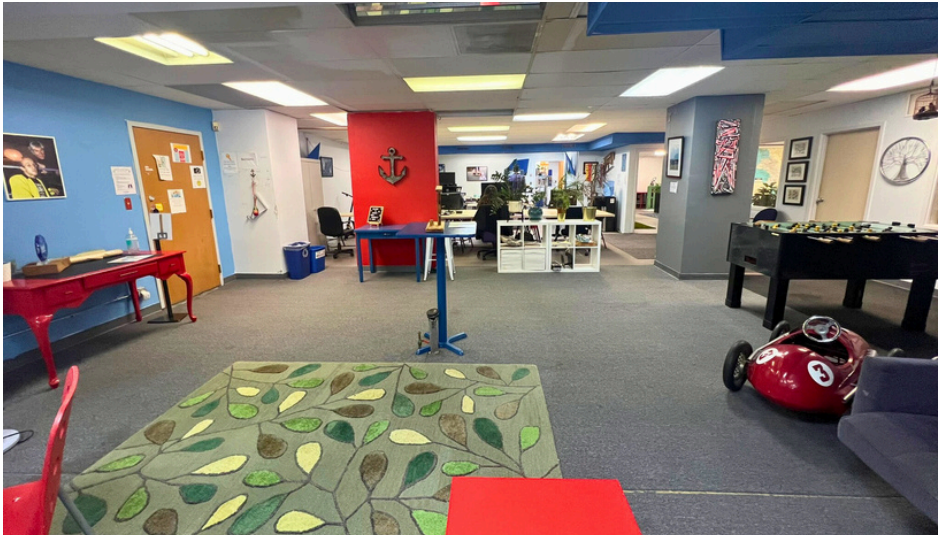
415-810-1914

Jean.ko@jll.com

RE Lic# 01184706



# 1540 MARKET STREET



**JEAN KO**

415-810-1914

Jean.ko@jll.com

RE Lic# 01184706

