



For Lease

300 Jackson Plaza | Ann Arbor, MI



Property Highlights

- 3,200 SF available
- Located in the Jackson Plaza Business Park at Wagner and Jackson Rd
- Easy access to I-94 and just minutes away from downtown Ann Arbor
- One grade level door
- Well maintained, well lit, new parking lot and roof
- Updated energy efficient lighting throughout
- 3-phase power (heavy duty)
- Recreational, wholesale, distribution and light industrial use
- Ceilings range from 18-24 feet high

Contact

Neal Warling
+1 734 769 3201
neal.warling@jll.com

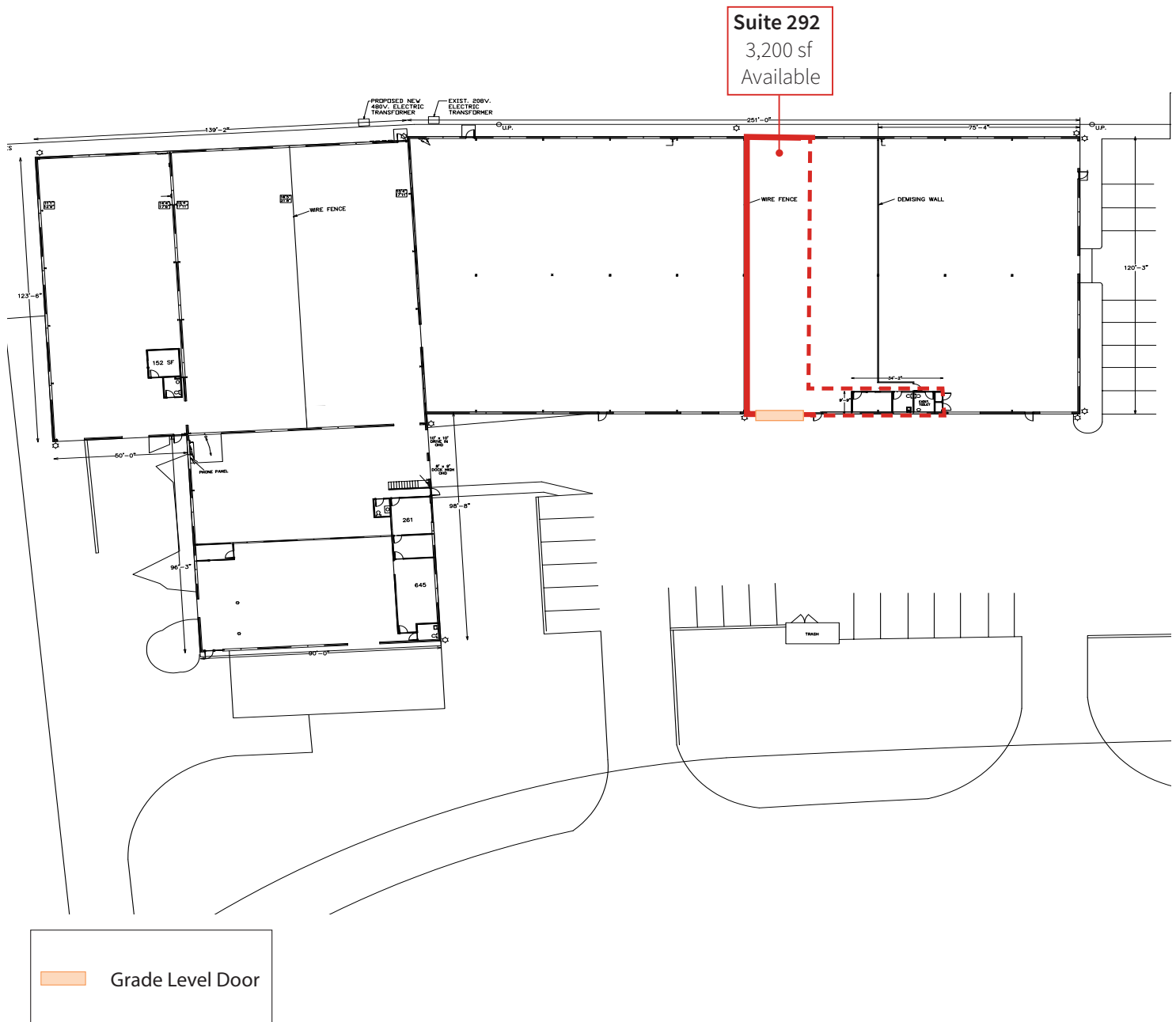
Rental Rate: \$9.75/MG

Property overview



Although information has been obtained from sources deemed reliable, JLL does not make any guarantees, warranties or representations, express or implied, as to the completeness or accuracy as to the information contained herein. Any projections, opinions, assumptions or estimates used are for example only. There may be differences between projected and actual results, and those differences may be material. JLL does not accept any liability for any loss or damage suffered by any party resulting from reliance on this information. If the recipient of this information has signed a confidentiality agreement with JLL regarding this matter, this information is subject to the terms of that agreement. ©2025. Jones Lang LaSalle IP, Inc. All rights reserved.

Floor plan



Contact

Neal Warling

+1 734 769 3201

neal.warling@jll.com

Although information has been obtained from sources deemed reliable, JLL does not make any guarantees, warranties or representations, express or implied, as to the completeness or accuracy as to the information contained herein. Any projections, opinions, assumptions or estimates used are for example only. There may be differences between projected and actual results, and those differences may be material. JLL does not accept any liability for any loss or damage suffered by any party resulting from reliance on this information. If the recipient of this information has signed a confidentiality agreement with JLL regarding this matter, this information is subject to the terms of that agreement. ©2025. Jones Lang LaSalle IP, Inc. All rights reserved.