



FOR SUBLEASE 2,500-8,500 RSF

**67 West 13490 South
Draper, UT**

David Nixon
+1 801 456 9518
david.nixon@jll.com



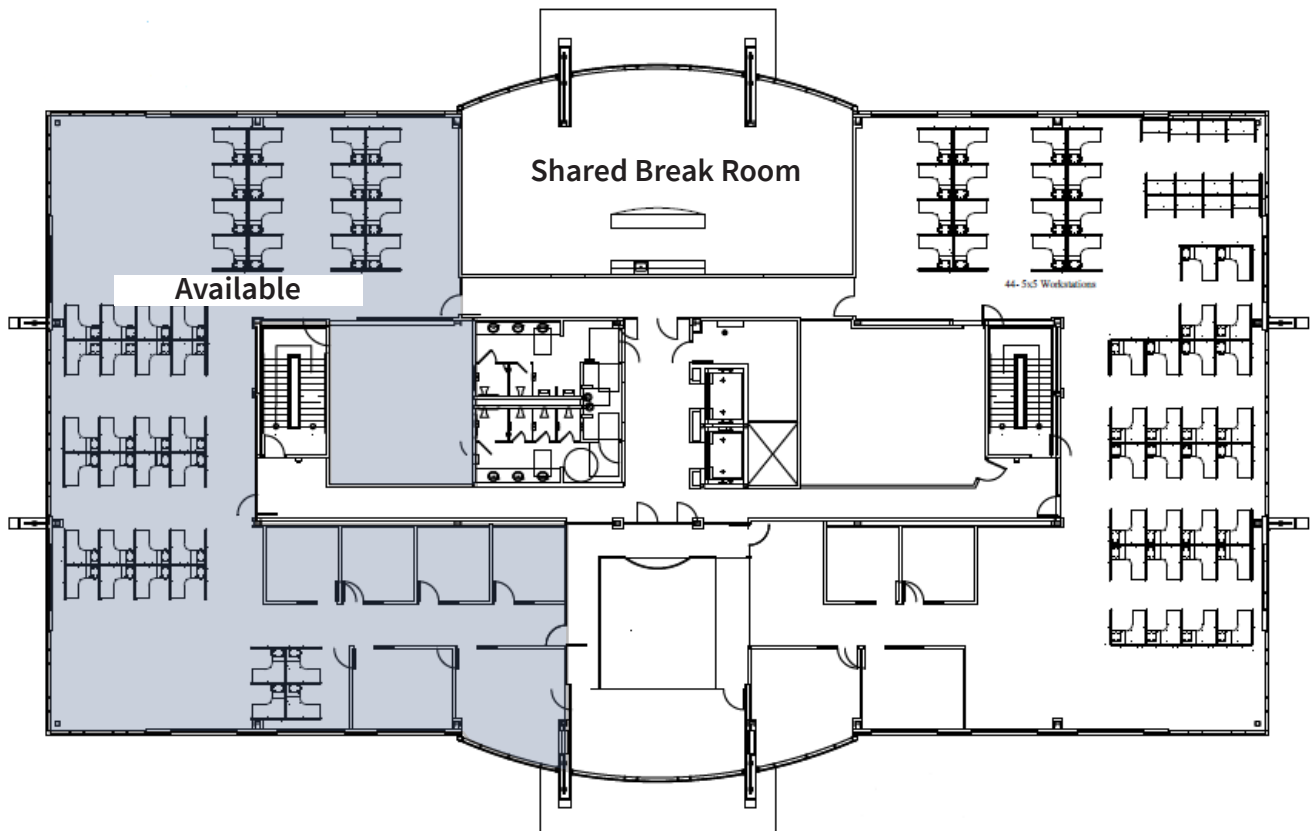
Jones Lang LaSalle Brokerage, Inc.

Property Highlights

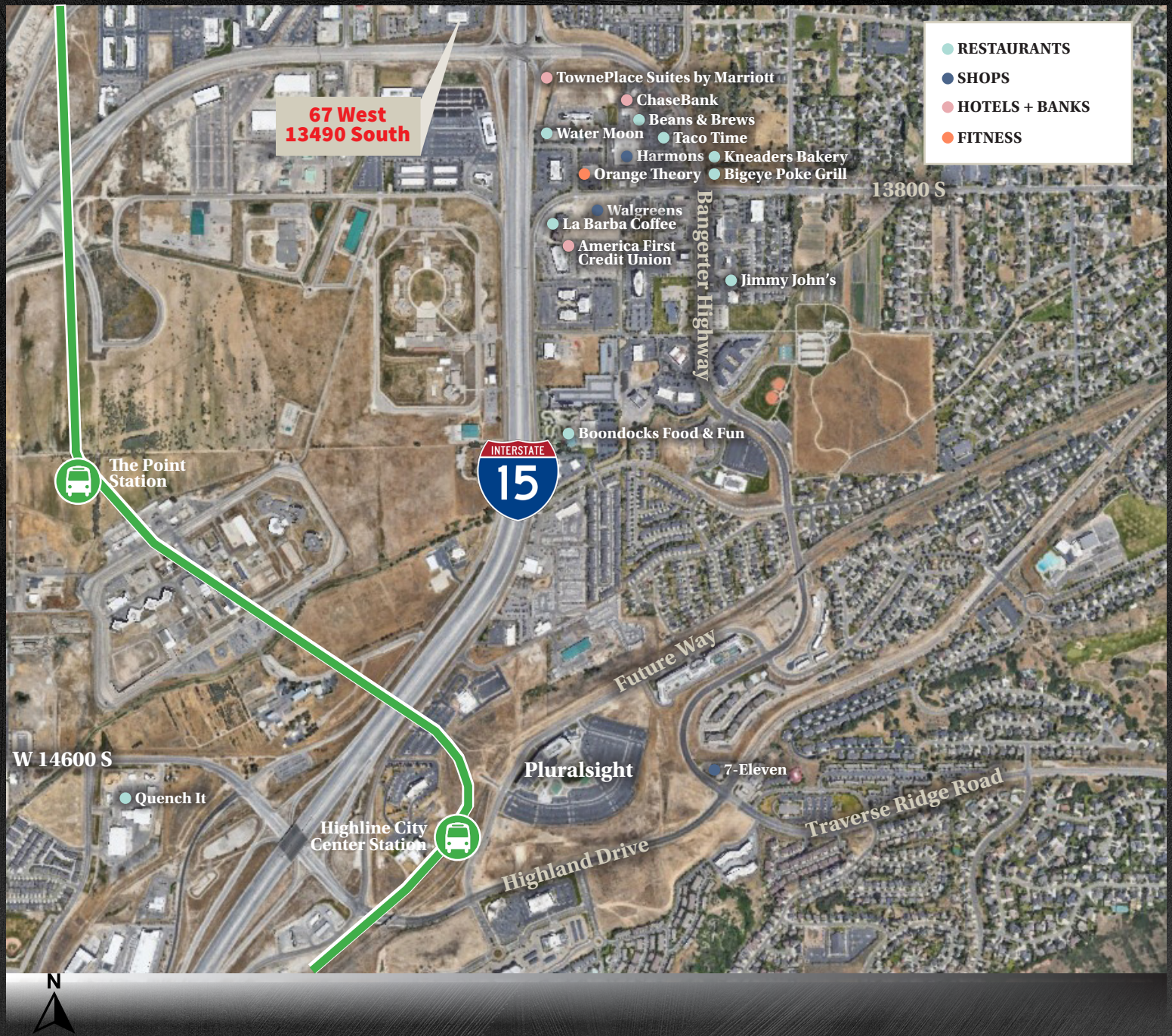


- 2,500 - 8,500 RSF available on the second floor
- \$22.00 FSG
- Flexible Term
- Available now
- Plug and Play with furniture
- Excellent visibility and access to I-15 and Bangerter Highway
- Location central to both Salt Lake and Utah Counties

Second Floor







Resturants

1. Beans & Brews
2. Water Moon
3. Taco Time
4. Kneaders Bakery
5. Quench It
6. Bigeye Poke Grill
7. La Barba Coffee
8. Jimmy John's
9. Boondocks

Shops

1. Harmons
2. Walgreens
3. 7-Eleven

Hotels + Banks

1. TownePlace Suites by Marriott
2. ChaseBank
3. America First Credit Union

Fitness

1. CrossFIT OUR
2. Orange Theory

Contact information:

David Nixon

+1 801 456 9518

david.nixon@jll.com

Jones Lang LaSalle Brokerage, Inc.

©2024 Jones Lang LaSalle LP, Inc. All rights reserved. All information contained herein is from sources deemed reliable; however, no representation or warranty is made to the accuracy thereof.

