



Professional Office Suites Available For Lease

# The Boardwalk

940 Monroe Ave NW | Grand Rapids, MI

 **JLL** SEE A BRIGHTER WAY

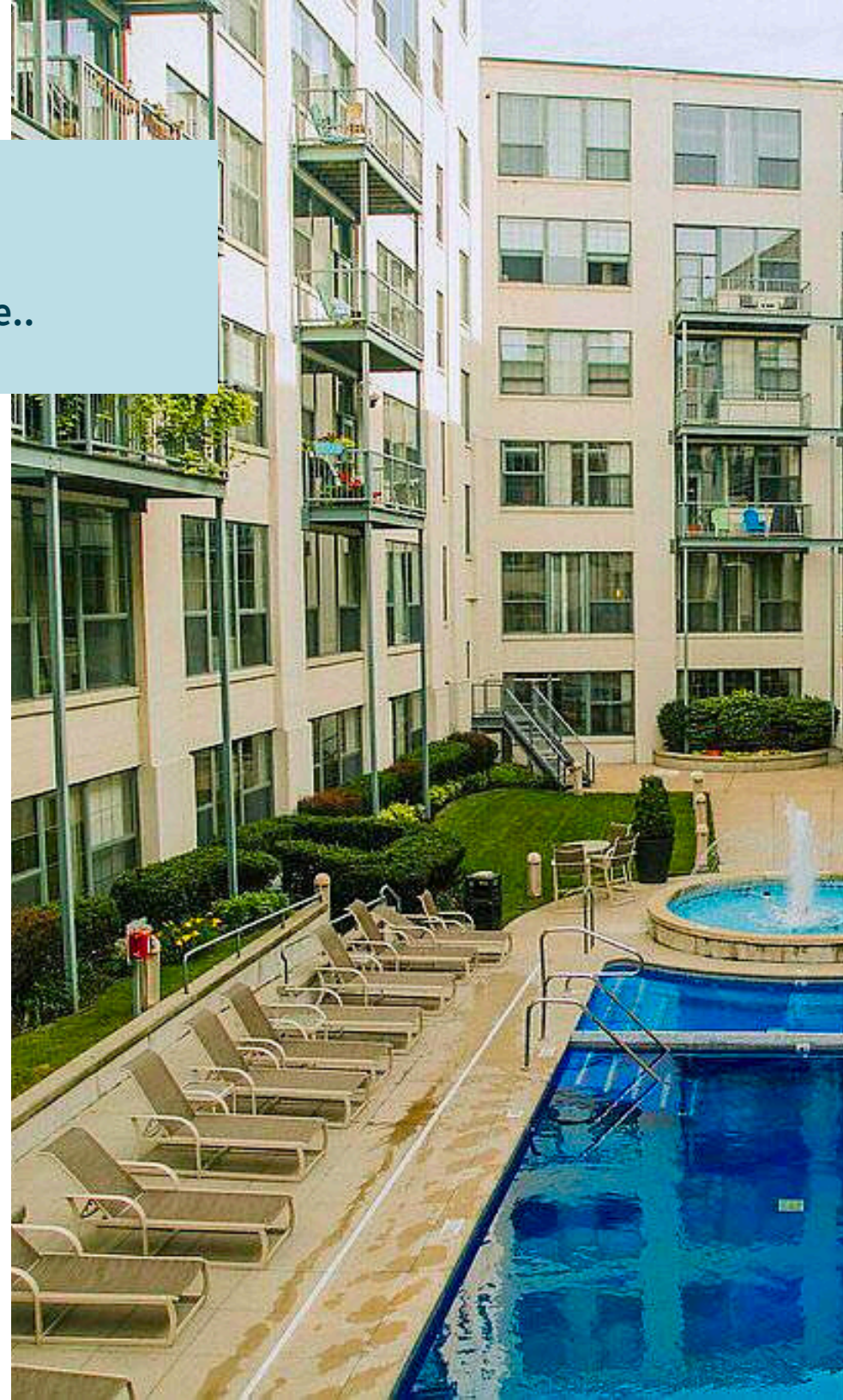


# WORK LIVE PLAY

The Boardwalk is more than just a workplace..

This distinctive locale offers a diverse array of amenities, catering to a wide spectrum of preferences and needs.

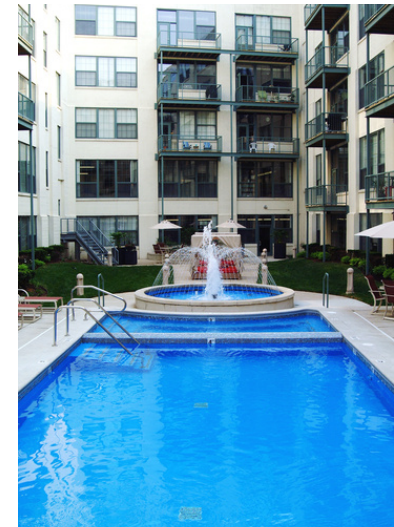
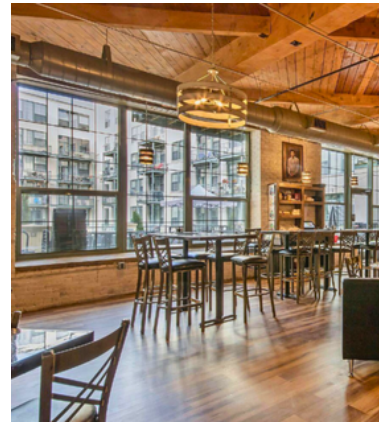
Strategically situated within the North Monroe Business District, this property features fully-equipped, move-in ready premises, complimentary on-premises parking, and immediate proximity to the US-131 and I-196 interchange.





# On-Site Amenities

- Dynamic mixed-use community
- Beautiful historic building
- Exposed brick and wood ceilings
- Abundant natural light and huge windows
- Large interior courtyard with pool, hot tub, lounge and seating areas
- Large interior forest courtyard with grill and seating areas
- Free on-site parking spaces
- Common area conference room
- On-site large fitness center
- On-site rooftop entertainment deck
- On-site restaurant and bar, with outdoor dining
- On-site game room and clubhouse
- On-site massage therapy
- On-site tanning salon
- On-site hair salon
- On-site security and building access control
- On-site management
- 3-Acre outdoor park overlooking the river

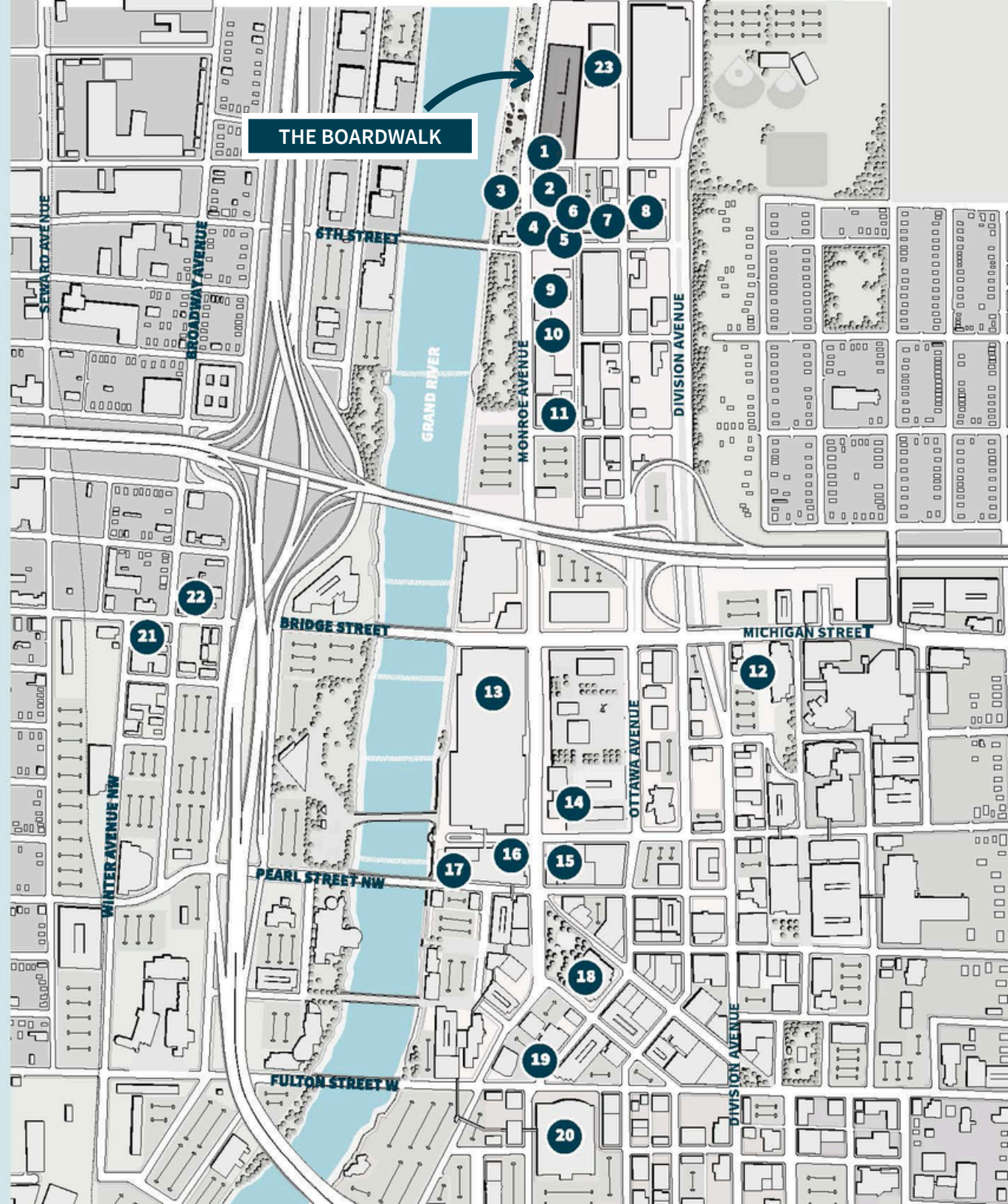




# Nearby Amenities

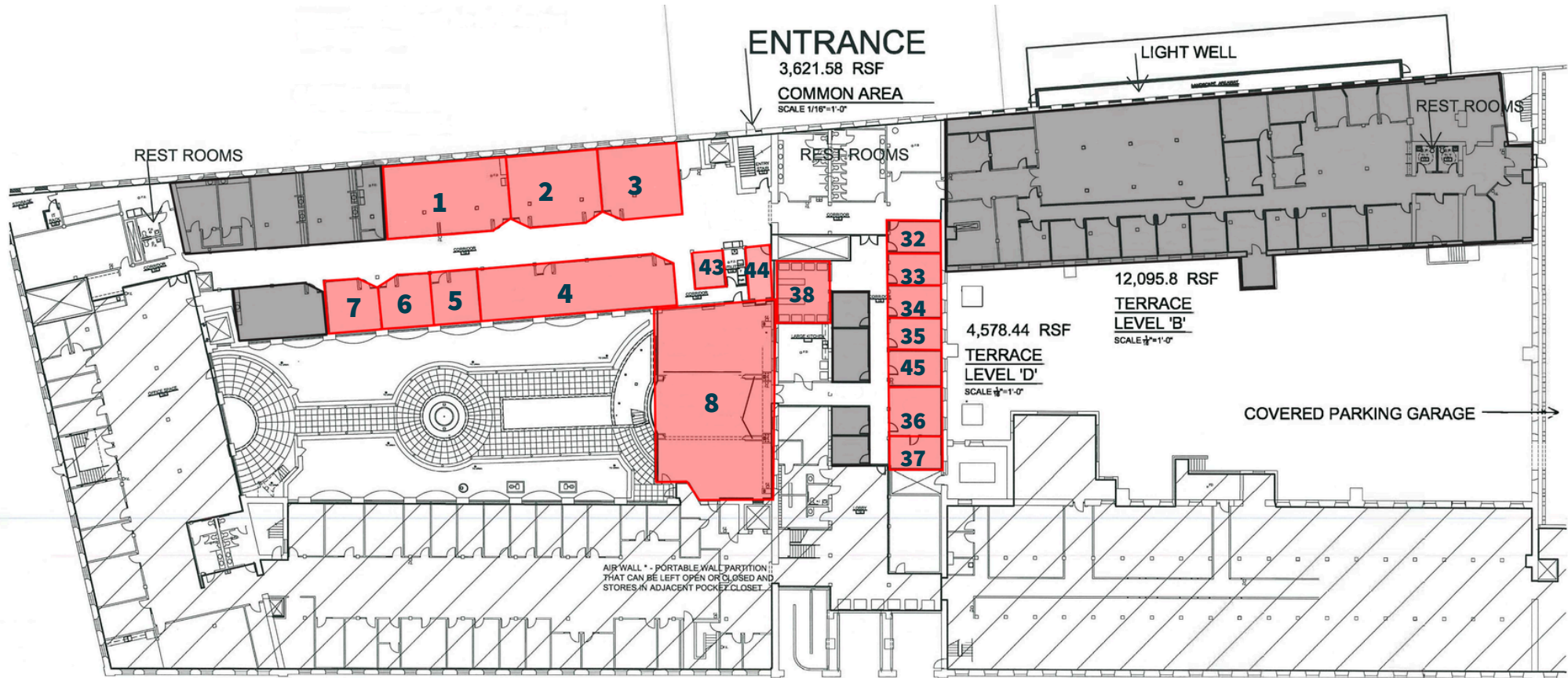
Situated on the East side of the river puts you just moments away from a myriad of dining and entertainment options in the heart of downtown Grand Rapids.

- 1 Brickyard Tavern
- 2 Citybuilt Brewing
- 3 Riverfront Park
- 4 Fido & Stitch Dog Grooming
- 5 Field & Flre Cafe
- 6 CKO Kickboxing
- 7 Garage Bar & Grill
- 8 Chicago Beef Joint
- 9 Embassy Suites by Hilton
- 10 Big E's Sports Grill
- 11 Speak EZ
- 12 Corewell Health Grand Rapids Campus
- 13 Devos Place
- 14 Real Seafood Company
- 15 The chop House Grand Rapids
- 16 Ruth's Chris Steak House
- 17 The Kitchen by Wolfgang Puck
- 18 Grand Rapids Art Museum
- 19 20 Monroe Live
- 20 Van Andel Arena
- 21 Butcher's Union
- 22 New Holland Brewing
- 23 SILVA (Coming February 2025)





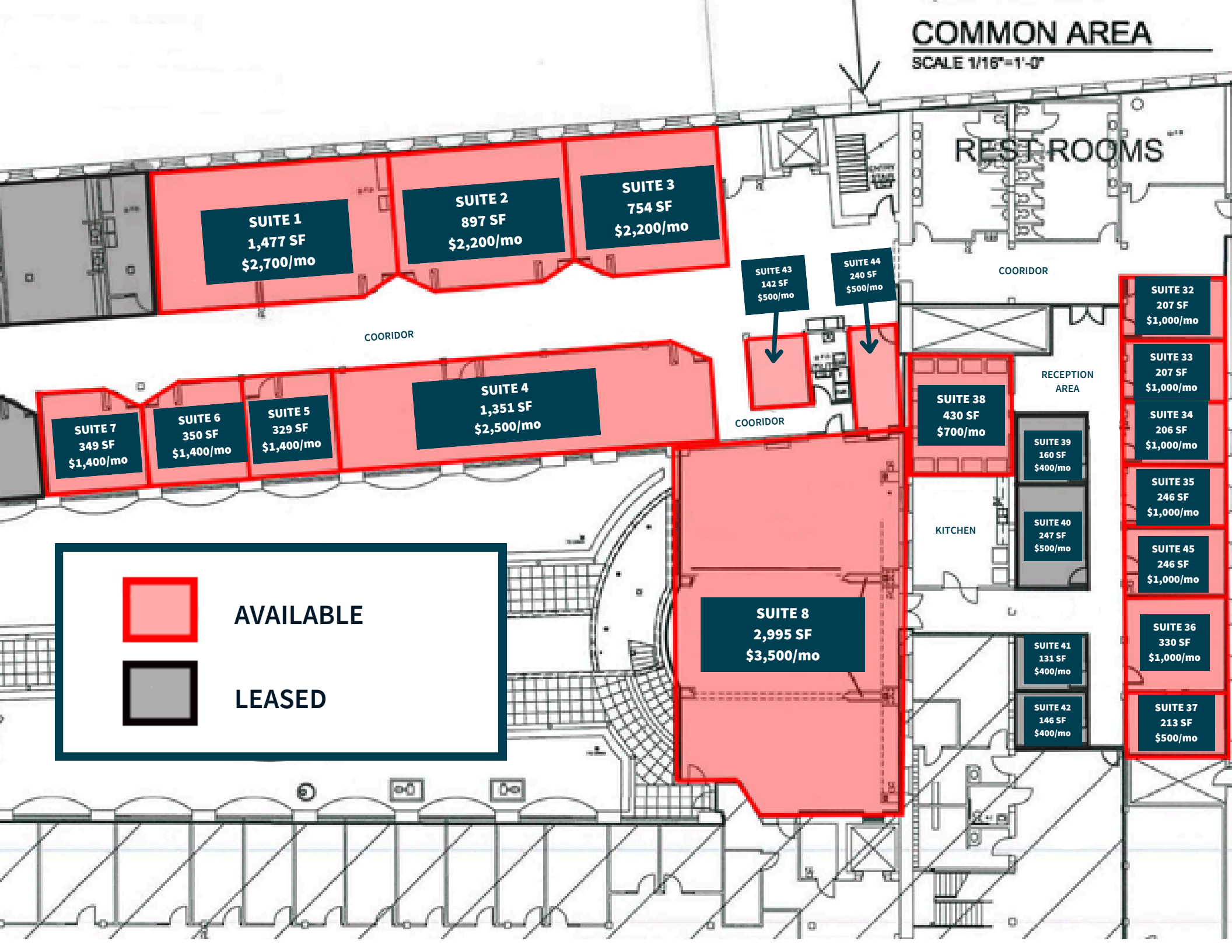
# Current Availabilities





# COMMON AREA

SCALE 1/16"=1'-0"





**Jeff Karger**

Executive Vice President

[jeff.karger@jll.com](mailto:jeff.karger@jll.com)

+1 616 649 3532

**Sarah Noordyke**

Associate

[sarah.noordyke@jll.com](mailto:sarah.noordyke@jll.com)

+1 616 649 3531

**Jaden Mabin**

Associate

[jaden.mabin@jll.com](mailto:jaden.mabin@jll.com)

+1 616 649 3535