

The
**WESTERN
PACIFIC**

1031 S Broadway, Los Angeles, CA



BRINGING BACK BROADWAY

Designed in stunning Beaux Arts style by architect Walker & Eisen and completed in 1925, 1031 South Broadway has long been a popular destination for Angelenos drawn to the street's famous theatres and department stores. Rebranded today as The Western Pacific, the building now stands triumphantly along what has become the hottest section of the hottest street in the city. Ace Hotel. The Broadway Palace. Herald Examiner Building. Hotel Proper. Hoxton Hotel – all just a few of its famous neighbors once again attracting the masses.

BUILDING FEATURES

- ◇ 20,102 RSF floor plates
- ◇ 160,307 RSF contiguous large block of space available
- ◇ Operable windows and skylights
- ◇ Natural light and fresh air
- ◇ Rooftop pickle ball and basketball court
- ◇ Roof deck with soft seating and entertainment area
- ◇ 2nd floor Tenant lounge
- ◇ Fitness center equipped with locker rooms and showers

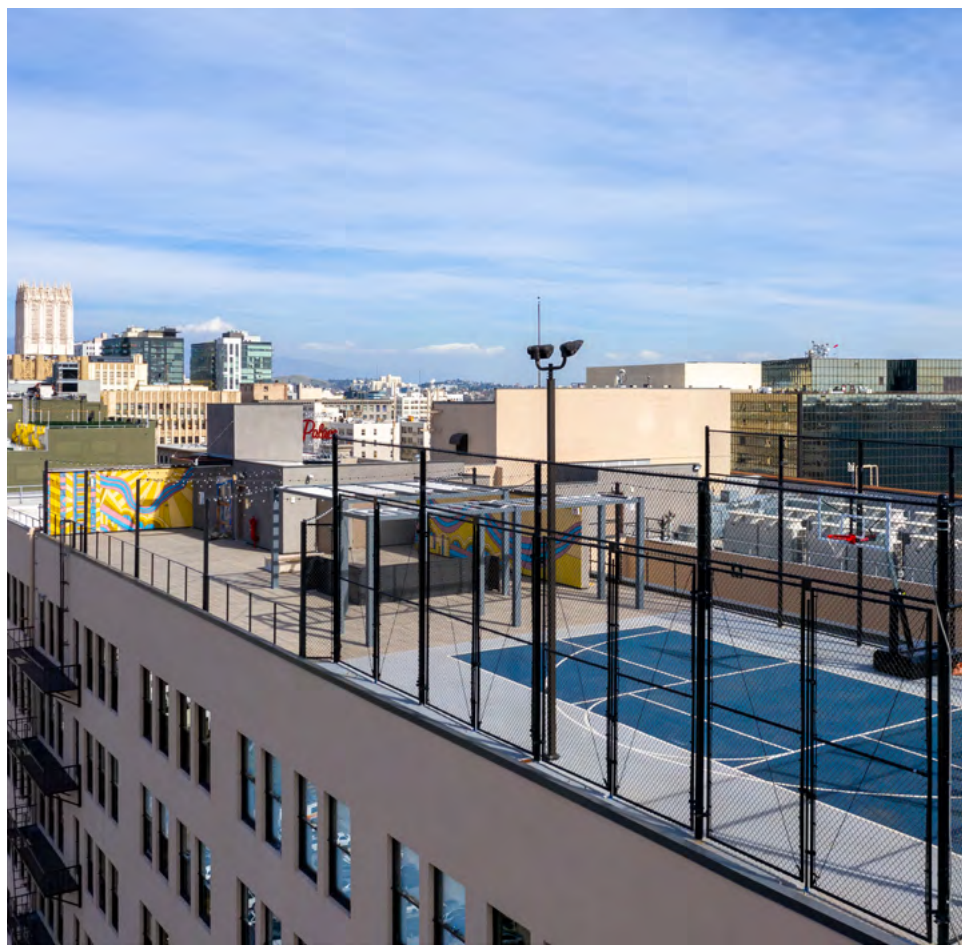
AMENITIES: TENANT LOUNGE & GYM

- ◇ Fitness Center
- ◇ Conference Center
- ◇ Privacy Rooms
- ◇ Pantry Area
- ◇ Gaming Zone
- ◇ Lounge Seating
- ◇ Swing Chairs



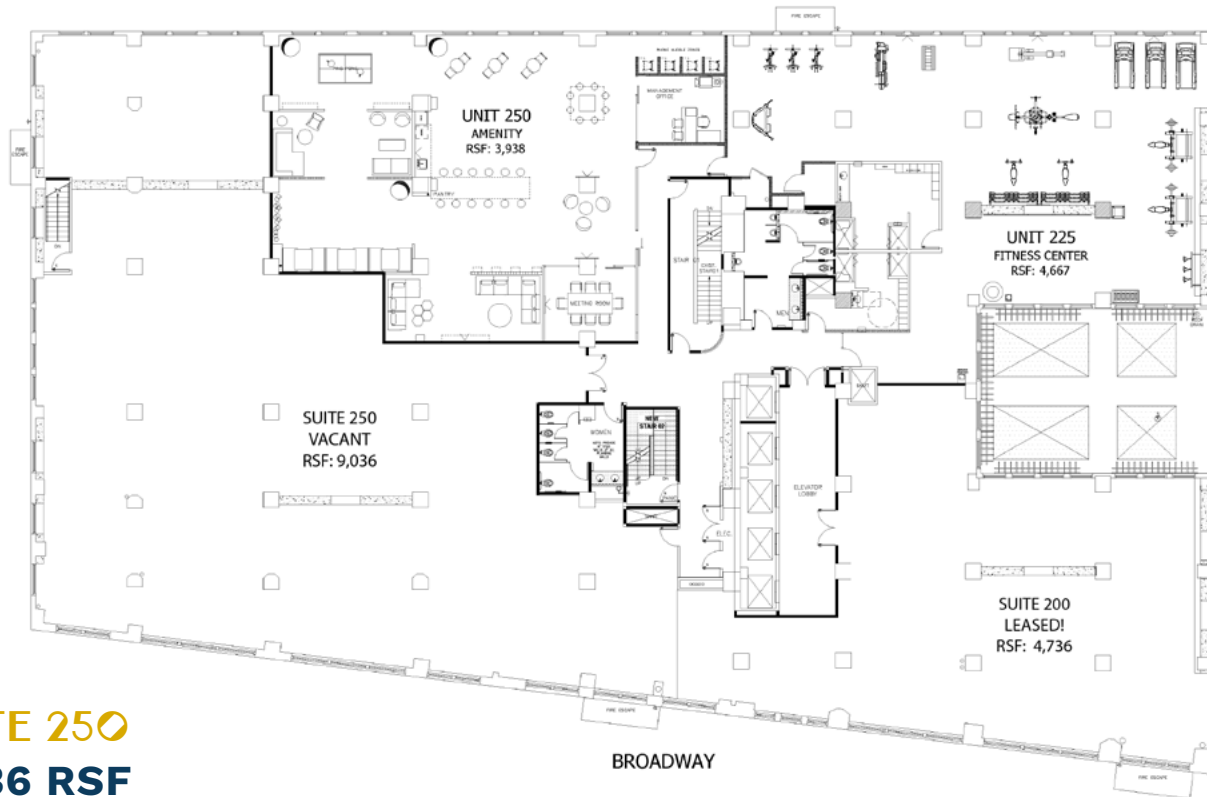
AMENITIES: ROOFTOP

- ◇ Multi-Game Court
- ◇ Cornhole Boards
- ◇ Pickleball Court
- ◇ Outdoor Seating Area With Fire Pit
- ◇ Bar & Catering Area



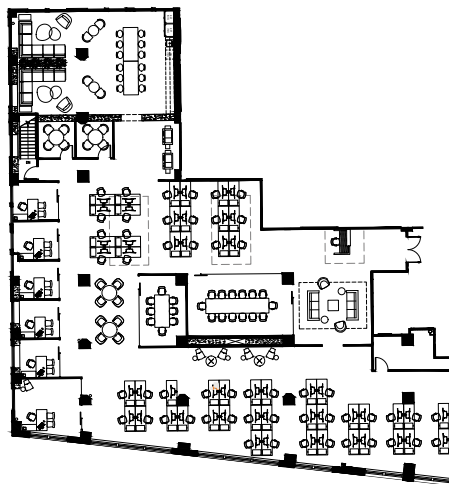
SPACE PLANS & AVAILABILITIES

2ND FLOOR



SUITE 250
9,036 RSF

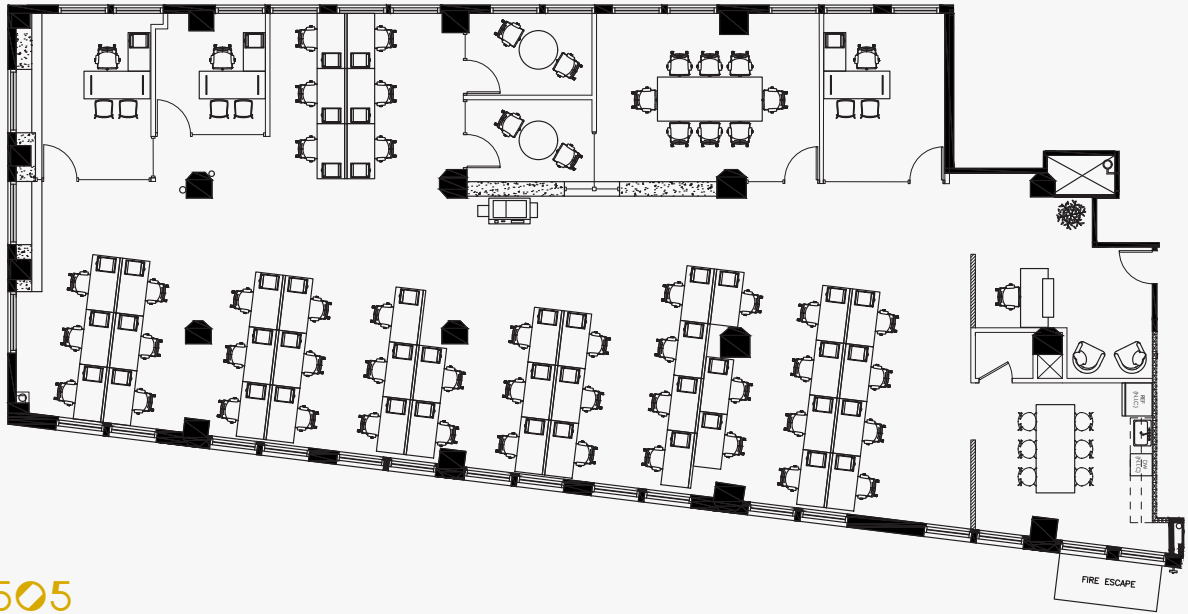
SPEC SUITE



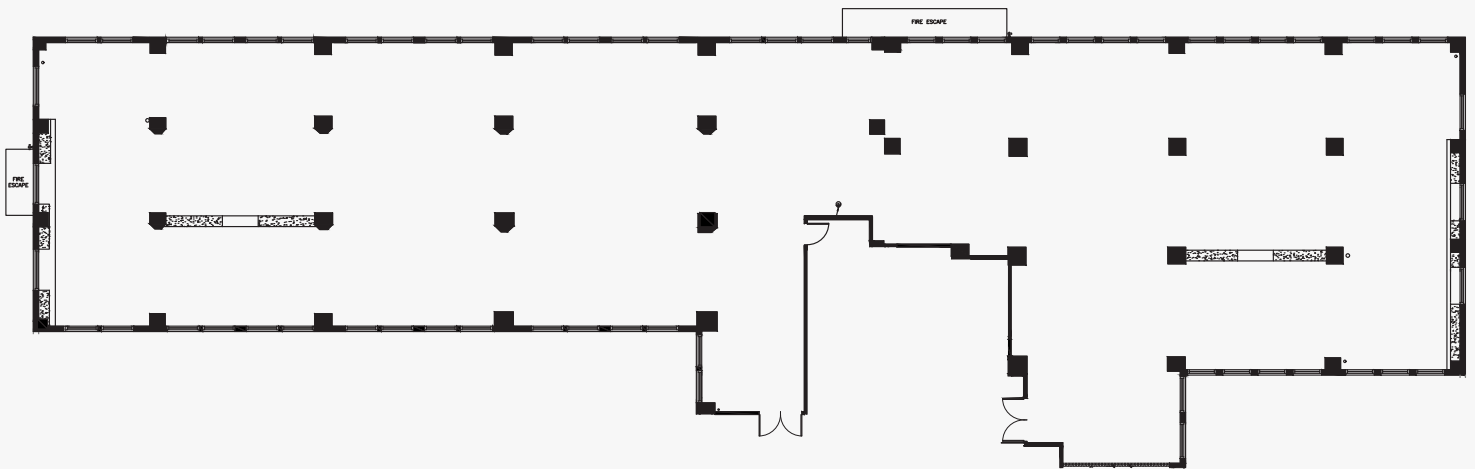
SUITE 250
9,036 RSF

SPACE PLANS & AVAILABILITIES

5TH FLOOR



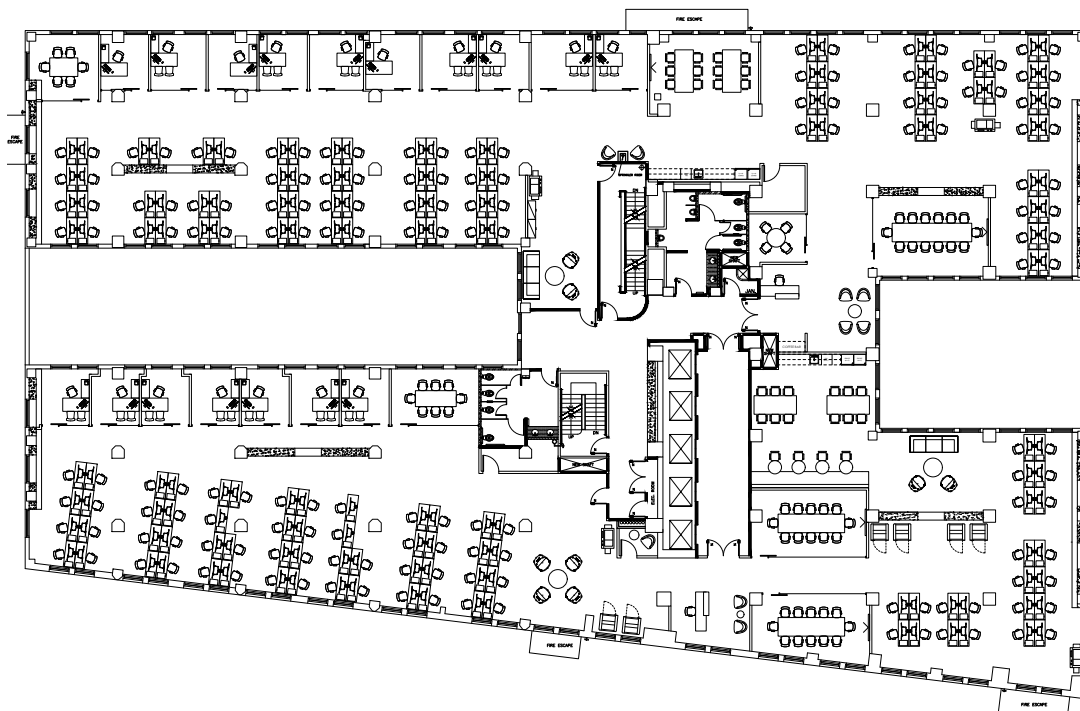
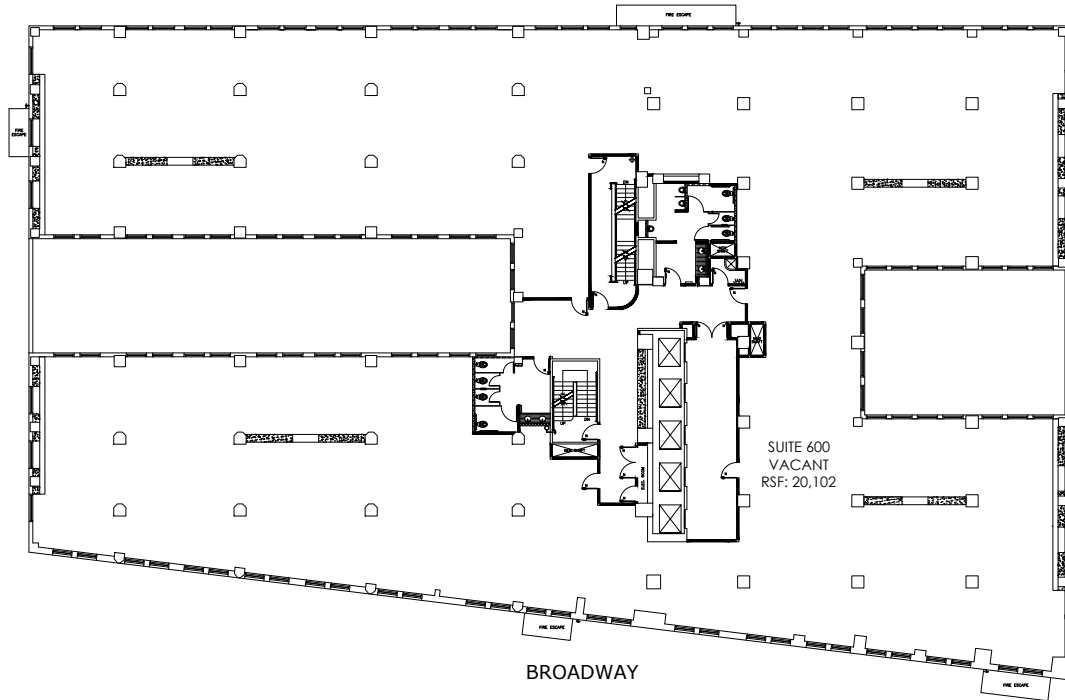
SUITE 505
5,040 RSF - Spec Suite



SUITE 510
10,394 RSF - Shell Condition

SPACE PLANS & AVAILABILITIES

6TH FLOOR



SUITE 600**

20,102 RSF - Shell Condition

***Full floors may be divisible**

****160,307 RSF contiguous available**

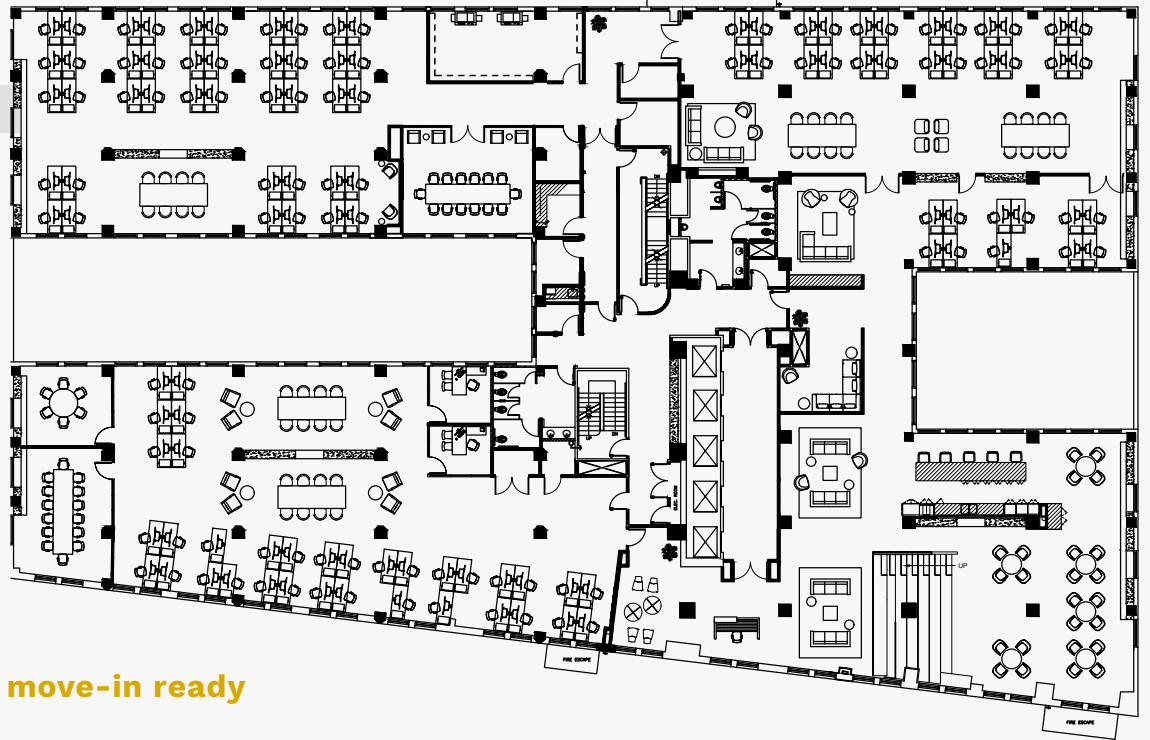
SPACE PLANS & AVAILABILITIES

7TH & 8TH FLOORS

SUITE 700**

20,102 RSF

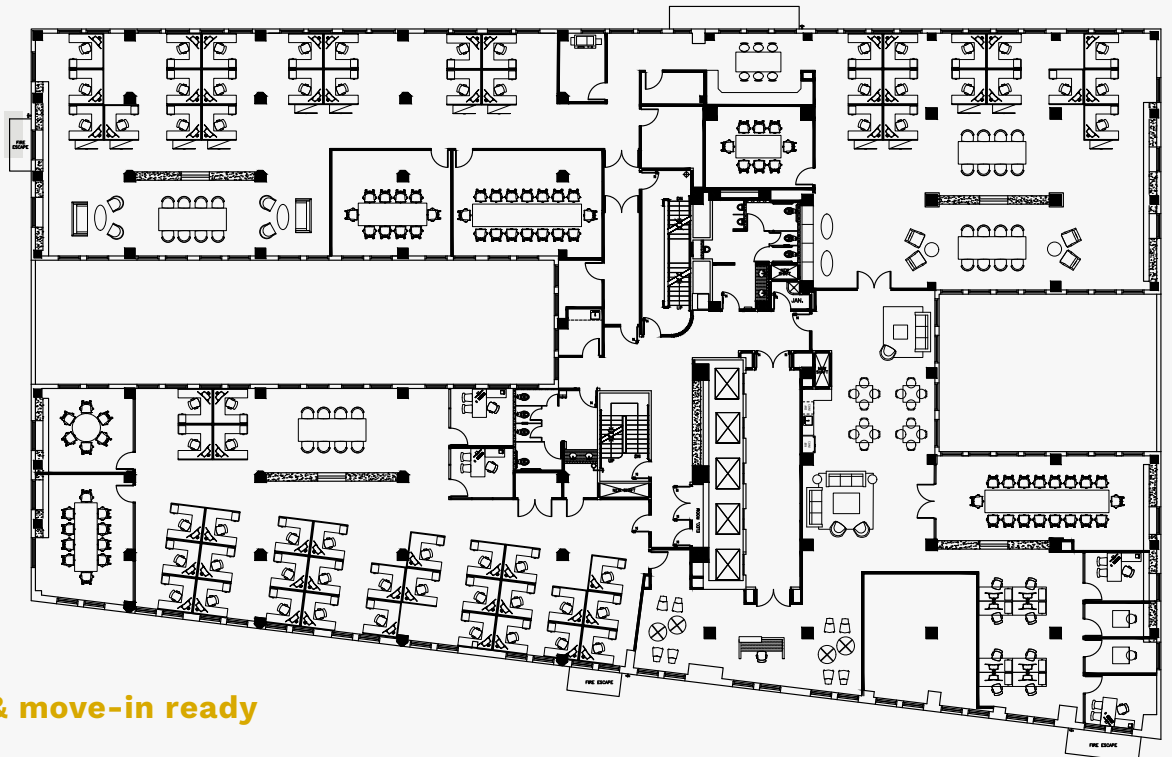
Fully furnished & move-in ready



SUITE 800**

20,102 RSF

Fully furnished & move-in ready

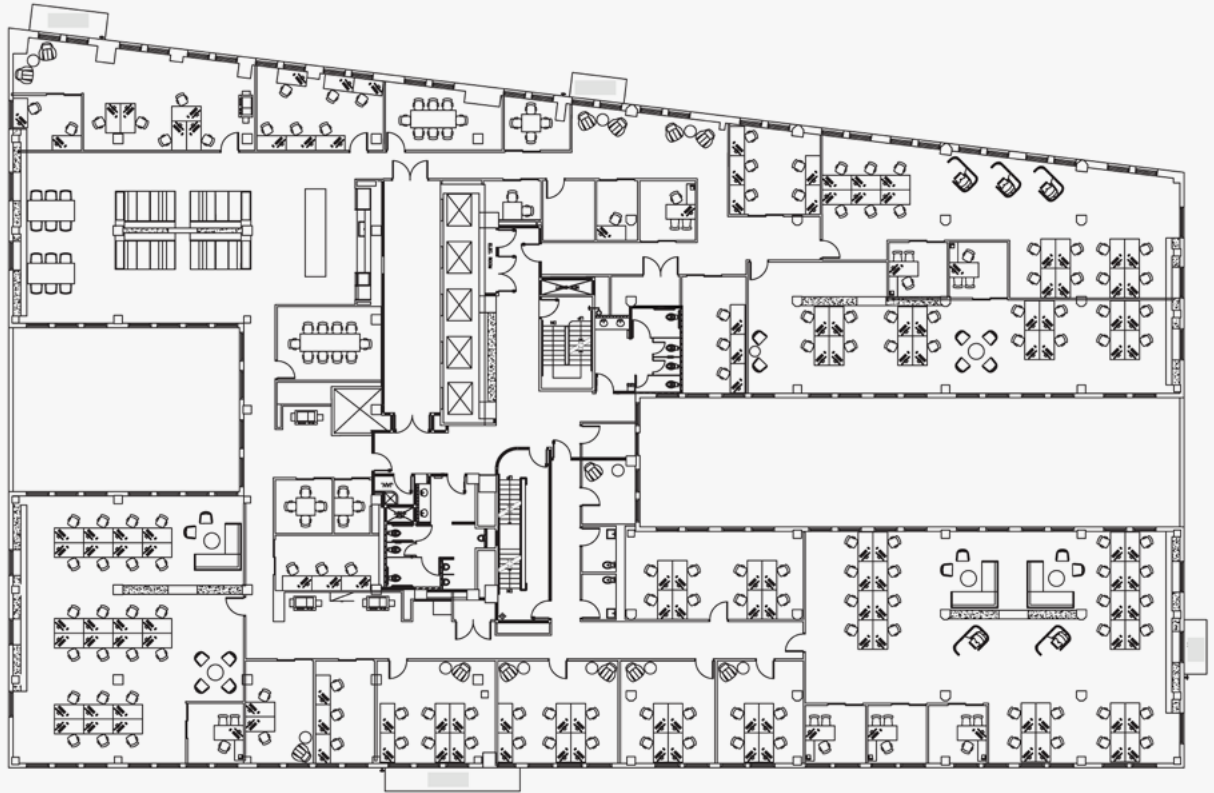


****160,307 RSF contiguous available**

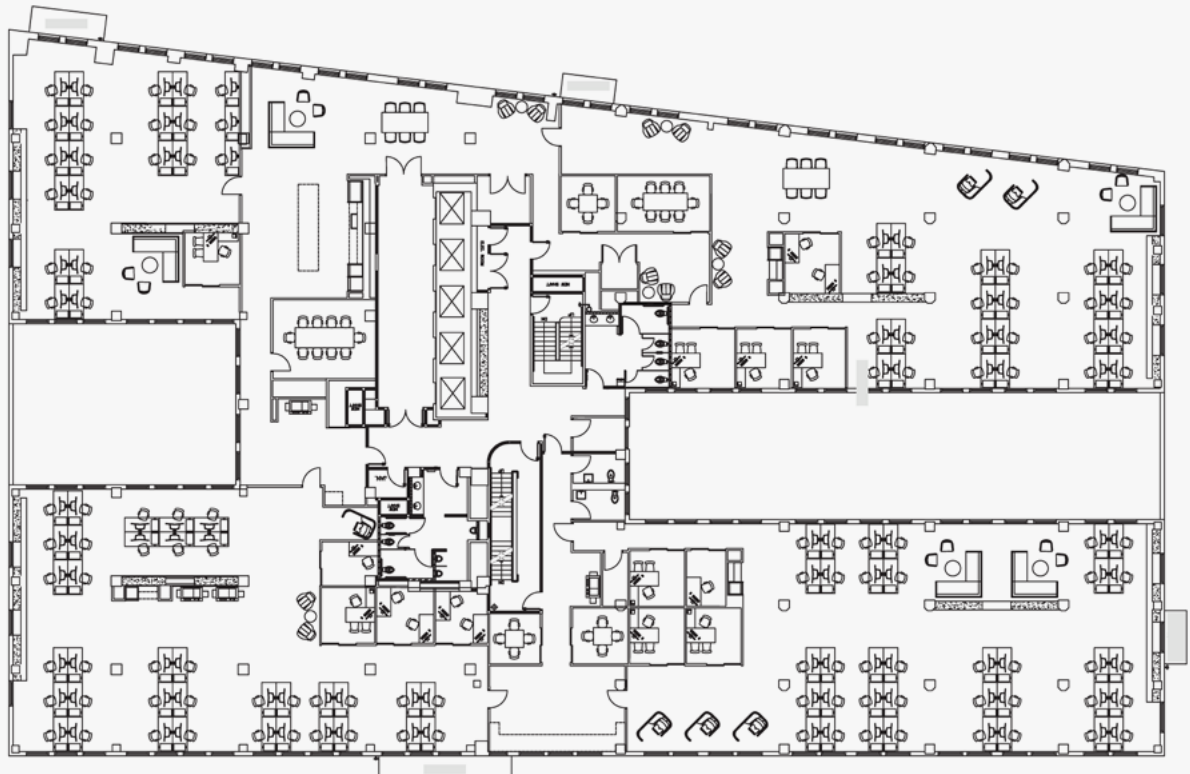
SPACE PLANS & AVAILABILITIES

9TH & 10TH FLOORS

SUITE 900**
20,102 RSF



SUITE 1000**
20,102 RSF

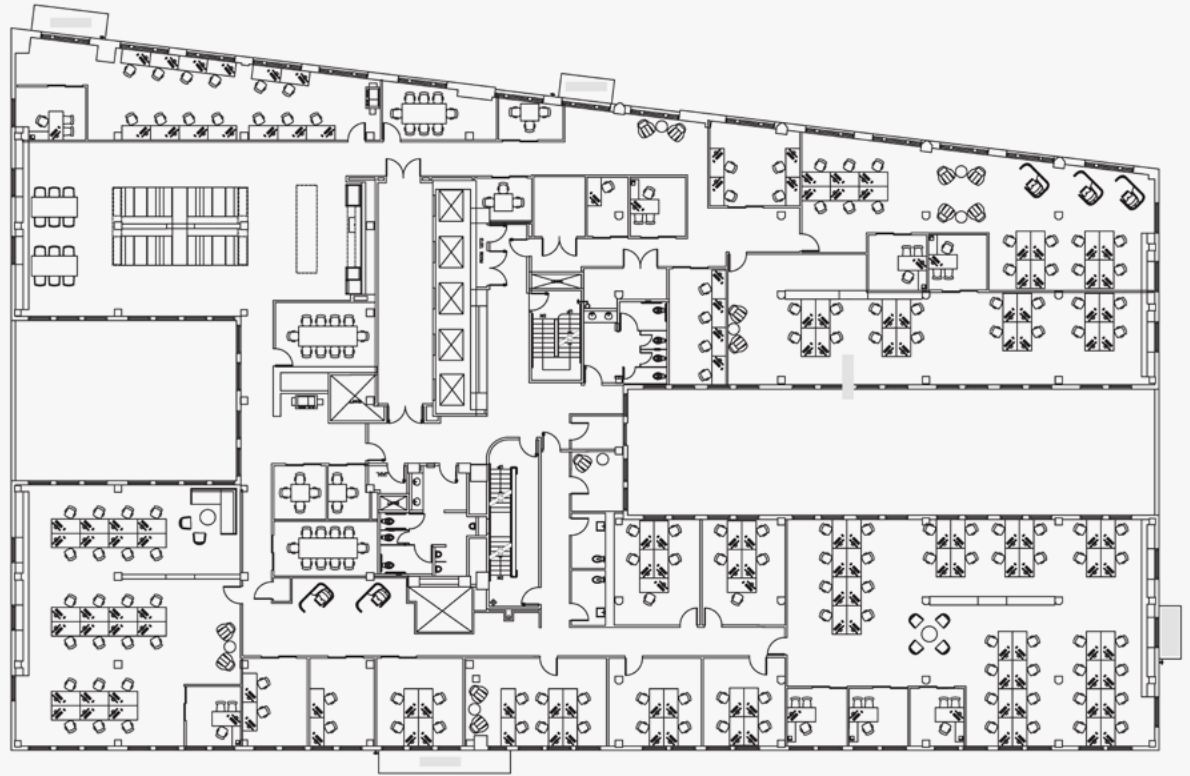


**160,307 RSF contiguous available

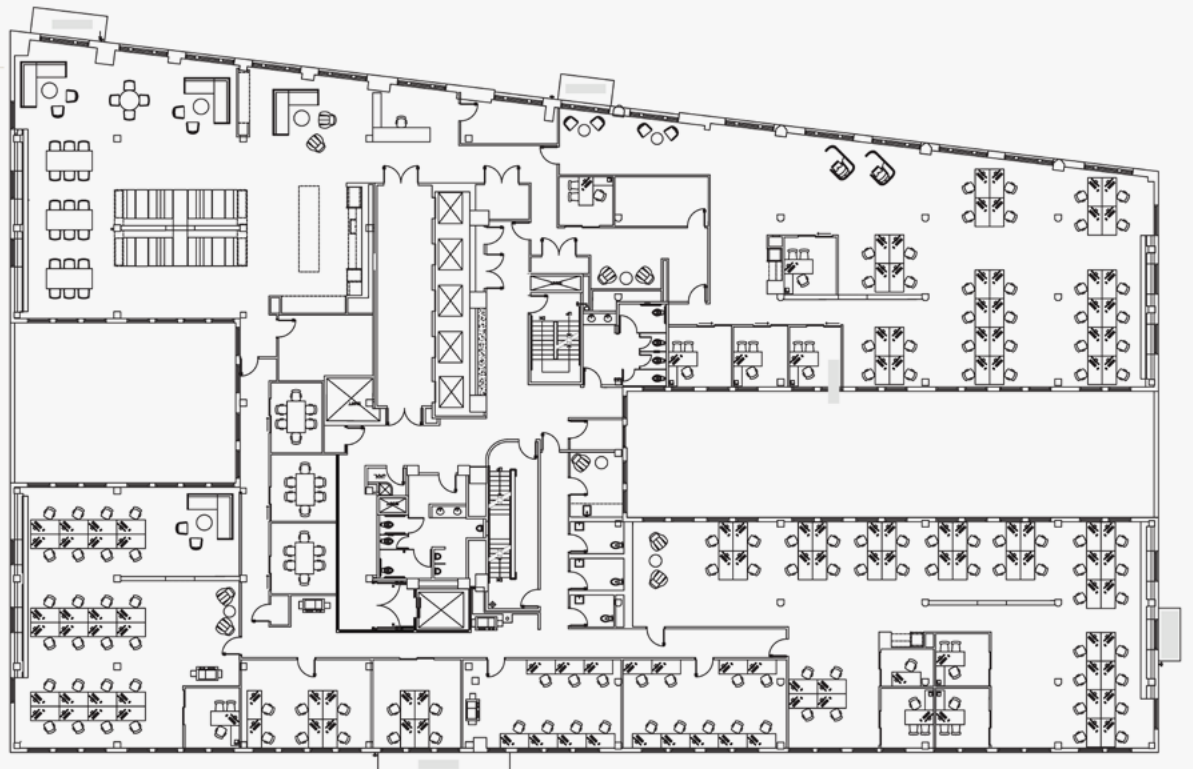
SPACE PLANS & AVAILABILITIES

11TH & 12TH FLOORS

SUITE 1100**
19,995 RSF



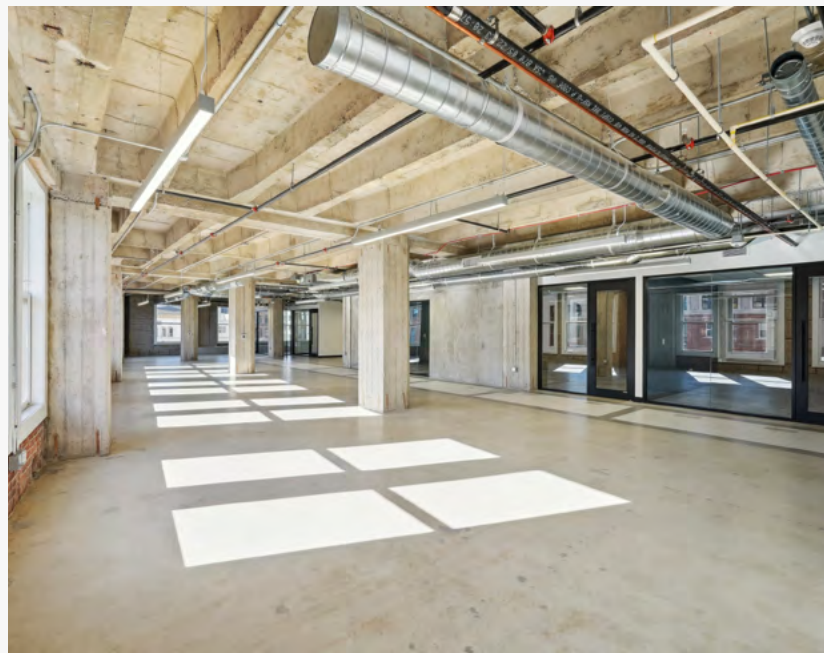
SUITE 1200**
19,701 RSF



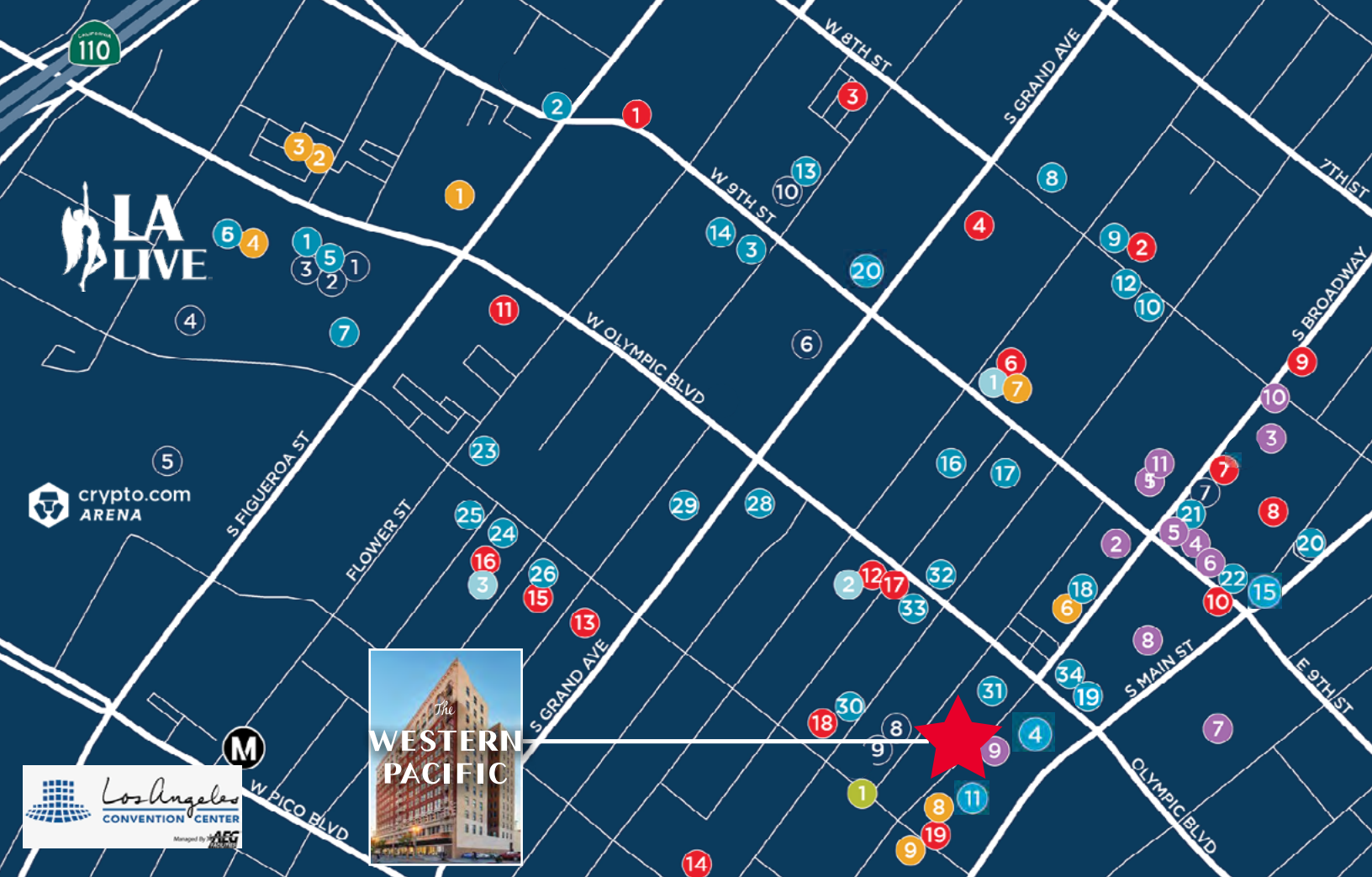
**160,307 RSF contiguous available

OFFICE GALLERY

SPEC SUITE 505







WESTERN PACIFIC

COFFEE/BAR

- 1 THE CAPITAL GRILLE
- 2 GOLDEN GOPHER
- 3 PHILZ COFFEE
- 4 ANDANTE COFFEE
- 5 IL CAFÉ
- 6 COGNOSCENTI COFFEE
- 7 BROADWAY BAR
- 8 VERVE COFFEE
- 9 BIERGARTEN
- 10 PATTERN BAR
- 11 CANA RUM BAR
- 12 MIKKELLER BAR
- 13 STARBUCKS
- 14 STARBUCKS
- 15 PRANK BARK
- 16 NIMBUS COFFEE
- 17 BIRDIES
- 18 BLUE MOON HOOKAH LOUNGE
- 19 SNOWDAY IN LA

ENTERTAINMENT

- 1 LUCKY STRIKE
- 2 GRAMMY MUSEUM
- 3 LA LIVE
- 4 MICROSOFT THEATRE
- 5 CRYPTO.COM ARENA
- 6 FIDM
- 7 ORPHEUM
- 8 MAYAN
- 9 BELASCO
- 10 PYO GALLERY

GYM/FITNESS

- 1 SOULCYCLE
- 2 CROSSFIT 213
- 3 CLUB PILATES

HOTEL

- 1 HOTEL FIGUEROA
- 2 COURTYARD BY MARRIOTT
- 3 RESIDENCE INN

- 4 THE RITZ CARLTON
- 5 JW MARRIOTT
- 6 STILE DTLA
- 7 LEVEL FURNISHED
- 8 HOXTON HOTEL
- 9 PROPER HOTEL

RESTAURANTS/MARKET

- 1 KATSUYA
- 2 THE PANTRY
- 3 PANINI KABOB GRILL
- 4 CABRA
- 5 FLEMINGS
- 6 WP24
- 7 TOMS WATCH BAR
- 8 WHOLE FOODS
- 9 COLORI KITCHEN
- 10 SHAKE SHACK
- 11 CARA CARA
- 12 SWEETGREEN
- 13 RALPHS
- 14 PANINI CAFÉ
- 15 LALA'S ARGENTINE GRILL
- 16 SHEKARCHI
- 17 THE STOCKING FRAME
- 18 LA CHAPTER
- 19 DUNE DOWNTOWN
- 20 BIRDIES
- 21 UMAMI
- 22 WOOD SPOON
- 23 BROKEN SPANISH
- 24 ARASHI SUSHI
- 25 PALM RESTAURANT
- 26 HYGGE BAKERY
- 27 BARCITO
- 28 PIZZA SOCIALE
- 29 DANNY'S TACOS
- 30 GRUB N' GO
- 31 MASTER BURGER
- 32 CHIPOTLE

- 33 CABANAS
- 34 DTLA RAMEN

EDUCATION

- 1 ASU

RETAIL

- 1 ACNE STUDIOS
- 2 BNKR
- 3 URBAN OUTFITTERS
- 4 A.P.C.
- 5 AESOP
- 6 JESSICA LOUISE
- 7 CA MARKET CENTER
- 8 WEST ELM
- 9 PACSUN
- 10 APPLE
- 11 THEORY



the hoxton

PACSUN

PROPER

SOULCYCLE



Theory

URBAN OUTFITTERS

sweetgreen

west elm

The
**WESTERN
PACIFIC**

ON BROADWAY



DANA VARGAS
Senior Vice President
dana.vargas@jll.com
+1 213 239 6121
RE license #01943620

JAMES MALONE
Executive Vice President
james.malone@jll.com
+1 213 239 6021
RE license #01281488



PETER HAJIMIHALLIS
Managing Director
peter.hajimihallis@jll.com
+1 213 239 6399
RE license #01994663

Although information has been obtained from sources deemed reliable, neither Owner nor JLL makes any guarantees, warranties or representations, express or implied, as to the completeness or accuracy as to the information contained herein. Any projections, opinions, assumptions or estimates used are for example only. There may be differences between projected and actual results, and those differences may be material. The Property may be withdrawn without notice. Neither Owner nor JLL accepts any liability for any loss or damage suffered by any party resulting from reliance on this information. If the recipient of this information has signed a confidentiality agreement regarding this matter, this information is subject to the terms of that agreement. © 2023 Jones Lang LaSalle IP, Inc. All rights reserved.