



**91,000 SF CLASS A MEDICAL/OFFICE BUILDING
AVAILABLE FOR LEASE**

FOREST MEDICAL PLAZA

7611 Forest Avenue Richmond, VA 23229

Jones Lang LaSalle Brokerage, Inc.



PROPERTY HIGHLIGHTS



Located on HCA's Henrico Doctors Hospital Campus,
fronting Forest Avenue



Ample amenities nearby such as shopping, dining and
fitness



Easily accessible off Forest Avenue
at multiple access points



Located on GRTC
Transit System route



Well-maintained
landscaping



Physician golf cart
use available



Suite and
directional signage



24/7 controlled /
monitored access



Easy access to I-64
and I-95, Central Richmond location



Two gurney elevators, and freight elevator
service



Parking Ratio: 5/1,000 SF
(360 spaces)



Day porter
service on-site



HEALTHCARE NEIGHBORS

Parham Doctors' Hospital

Henrico Doctors' Hospital

Bon Secours St. Mary's Hospital

Willow Lawn Retail Corridor

Chick-fil-A

Walmart

Regency Mall

FIRST WATCH



mezeh



CAVA

Kroger

197

2ND FLOOR

Suite 200 | 12,239 SF



FLOOR PLANS

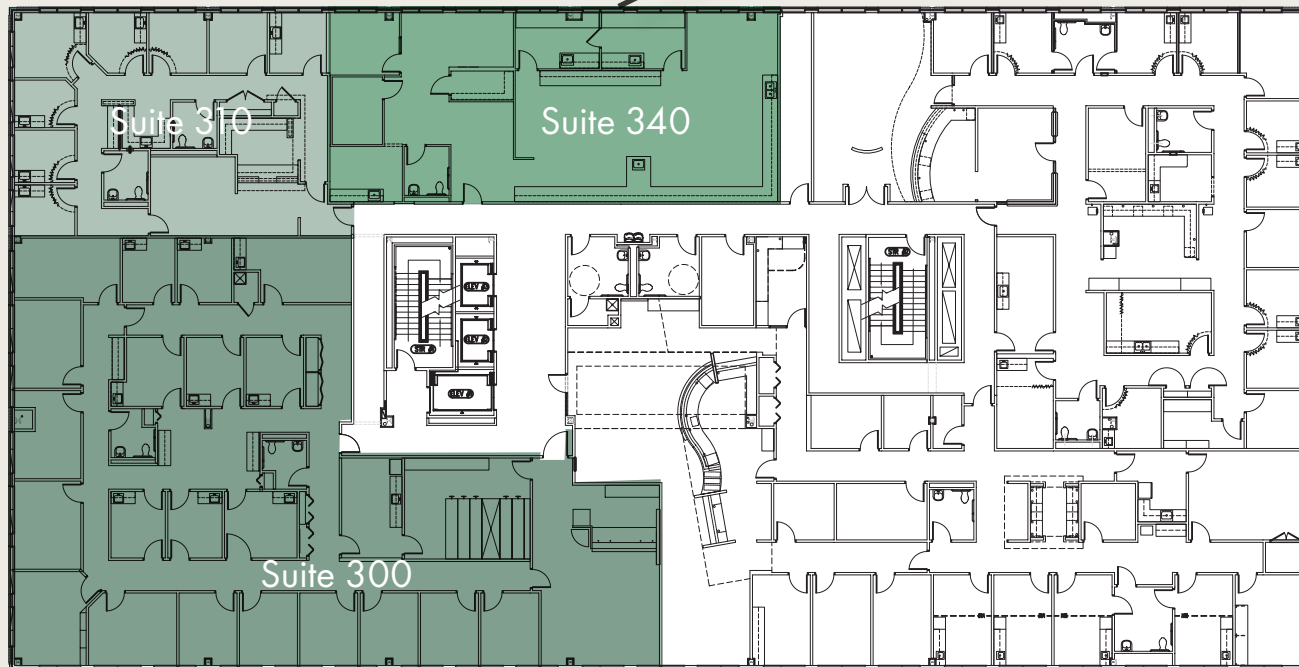
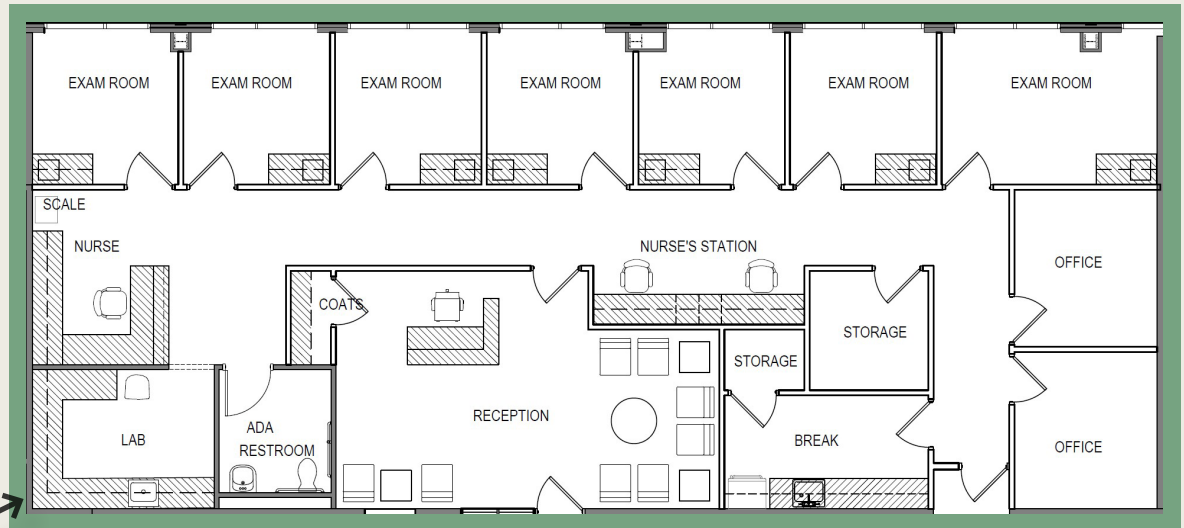
3RD FLOOR

Suite 300 | 6,622 SF

Suite 310 | 2,316 SF

Suite 340 | 2,724 SF

Vacancies on 3rd floor can be leased together for total of 11,662 SF



Scan to view a 3D rendering of this sample layout





New Media Systems, Inc.
204.359.2620
www.newmediasystems.net



Grant Holzbach
+1 804 200 6417
Grant.Holzbach@jll.com

Jimmy Appich
+1 804 200 6420
Jimmy.Appich@jll.com

Although information has been obtained from sources deemed reliable, neither Owner nor JLL makes any guarantees, warranties or representations, express or implied, as to the completeness or accuracy as to the information contained herein. Any projections, opinions, assumptions or estimates used are for example only. There may be differences between projected and actual results, and those differences may be material. The Property may be withdrawn without notice. Neither Owner nor JLL accepts any liability for any loss or damage suffered by any party resulting from reliance on this information. If the recipient of this information has signed a confidentiality agreement regarding this matter, this information is subject to the terms of that agreement. ©2024 Jones Lang LaSalle IP, Inc. All rights reserved.

FOREST MEDICAL CENTER