

5-01 51st Avenue

Long Island City Retail Space for Lease

Southeast corner of 51st Avenue & 5th Street

Premises	Size	Ceiling Heights
Ground Floor	18,973 sf	14'
Second Floor	18,973 sf	11'5"

Building Dimensions	Possession
99' x 188'	Immediate

Comments

- Full building branding opportunity
- Open to all logical divisions
- All uses to be considered
- Potential for roof top development

Transportation

Located two blocks from the 7-train subway station at Vernon Blvd. & 50th Ave.

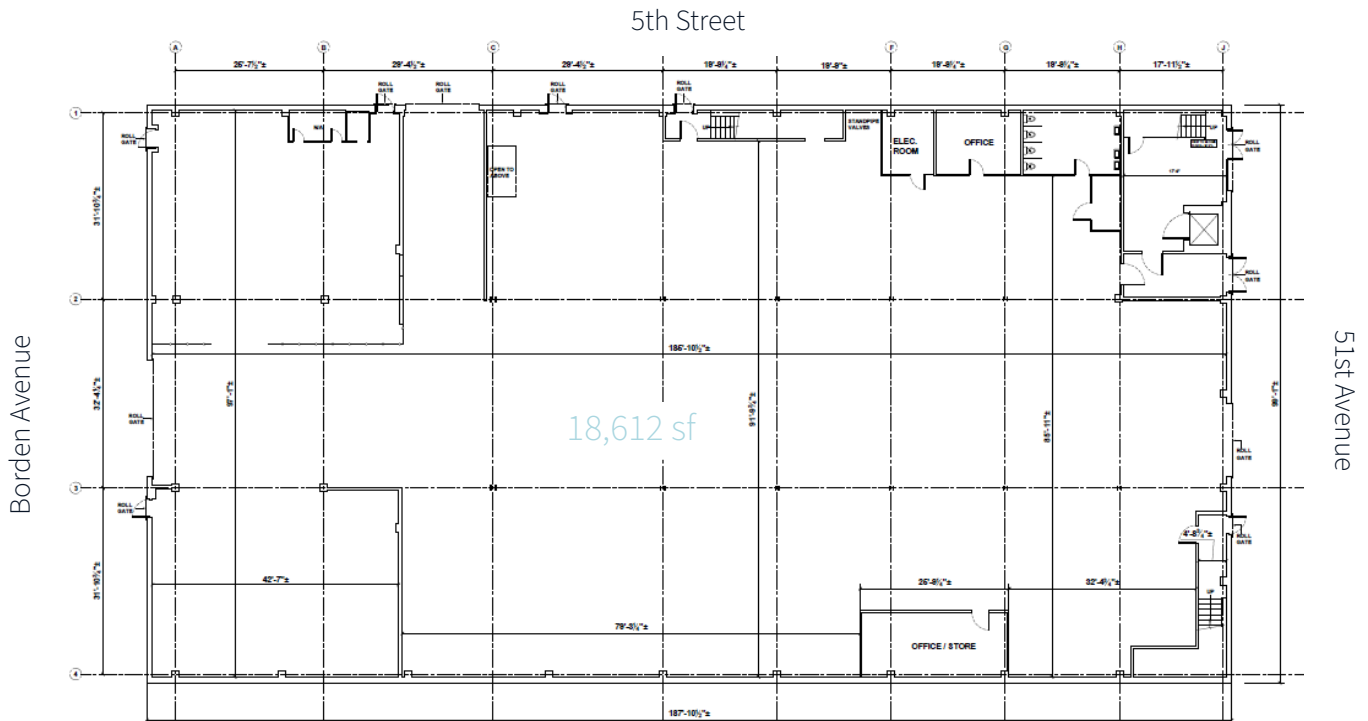


Ryan P. Condren
+1 212 220 4117
ryan.condren@jll.com

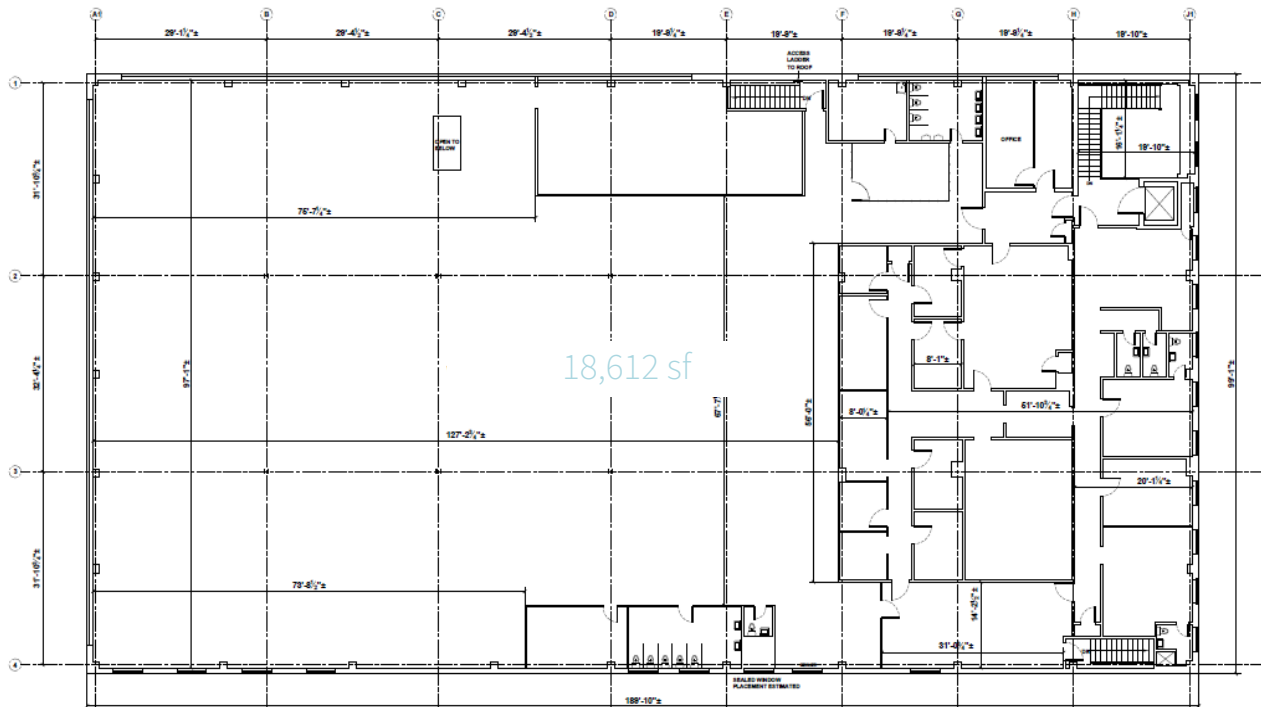
George Danut
+1 212 220 4121
george.danut@jll.com

Richard B. Hodos
+1 212 479 9883
richard.hodos@jll.com

Ground Floor



Second Floor





Jones Lang LaSalle Brokerage, Inc.
330 Madison Avenue New York, NY 10017
DISCLAIMER

Although information has been obtained from sources deemed reliable, neither Owner nor JLL makes any guarantees, warranties or representations, express or implied, as to the completeness or accuracy as to the information contained herein. Any projections, opinions, assumptions or estimates used are for example only. There may be differences between projected and actual results, and those differences may be material. The Property may be withdrawn without notice. Neither Owner nor JLL accepts any liability for any loss or damage suffered by any party resulting from reliance on this information. If the recipient of this information has signed a confidentiality agreement regarding this matter, this information is subject to the terms of that agreement. © 2025 Jones Lang LaSalle IP, Inc. All rights reserved.



Jones Lang LaSalle Brokerage, Inc.
330 Madison Avenue New York, NY 10017
DISCLAIMER

Although information has been obtained from sources deemed reliable, neither Owner nor JLL makes any guarantees, warranties or representations, express or implied, as to the completeness or accuracy as to the information contained herein. Any projections, opinions, assumptions or estimates used are for example only. There may be differences between projected and actual results, and those differences may be material. The Property may be withdrawn without notice. Neither Owner nor JLL accepts any liability for any loss or damage suffered by any party resulting from reliance on this information. If the recipient of this information has signed a confidentiality agreement regarding this matter, this information is subject to the terms of that agreement. © 2025 Jones Lang LaSalle IP, Inc. All rights reserved.

- LIC's population grew by 40% between 2010 and 2021 - 5.7x faster than the growth rate for New York City
- Since 2009, more than 20,000+ new residential units were built across the greater LIC area



Residential	Retail	Commercial & Industrial	Hotels	
34K Units Completed	848K Sq. Ft. Completed	10M Sq. Ft. Completed	59 Hotels Completed	7K Rooms Completed
6K Units Under Construction	231K Sq. Ft. Under Construction	925K Sq. Ft. Under Construction	8 Hotels Under Construction	716 Rooms Under Construction
7K Units Proposed	160K Sq. Ft. Proposed	2M Sq. Ft. Proposed	6 Hotels Proposed	514 Rooms Proposed

Source: Long Island City Partnership 2024