



1601 5TH AVENUE · SEATTLE, WASHINGTON

WESTLAKE TOWER

WESTLAKETOWERSEA.COM



THE GATEWAY TO ALL OF SEATTLE

Uniquely positioned at the very epicenter of Seattle's Central Business District, Westlake Tower boasts unparalleled access to mass transit, unrivaled retail amenities, and protected lake, bay and cityscape views.



Class A,
365k+ SF &
25 stories



17K SF
flexible
floor plates



Great setbacks
allowing for more
natural light



Unique
cityscape
views

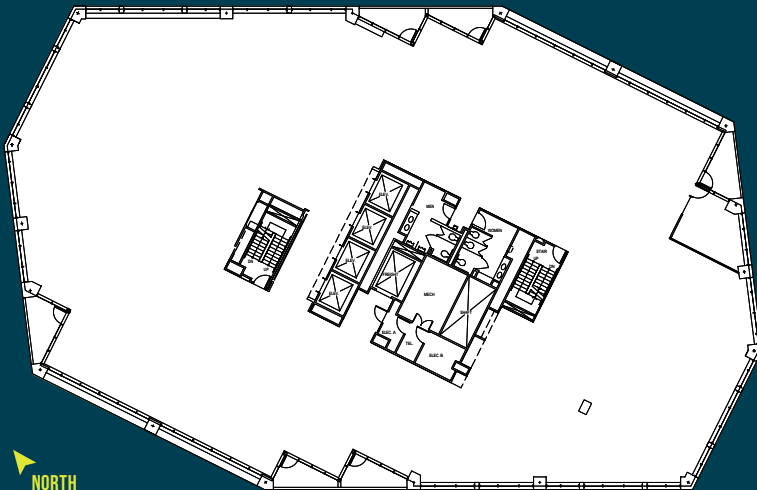


Direct access
to Westlake
Station



On-site
property
management

REPRESENTATIVE FLOOR PLAN ±17,000 SF



NORTH


BUS, MONORAIL, LIGHT RAIL, STREETCAR
- VARIOUS TRANSIT OPTIONS AND
MYRIAD AMENITIES WITHIN
WALKING DISTANCE





 **ABUNDANT
NATURAL LIGHT**



**CONFERENCE
CENTER** 


THE FRAMEWORK TO MAKE
**A LASTING
IMPRESSION**

Westlake Tower offers incredible sweeping views of the city; a bright, open lobby and amenities that offer convenience.



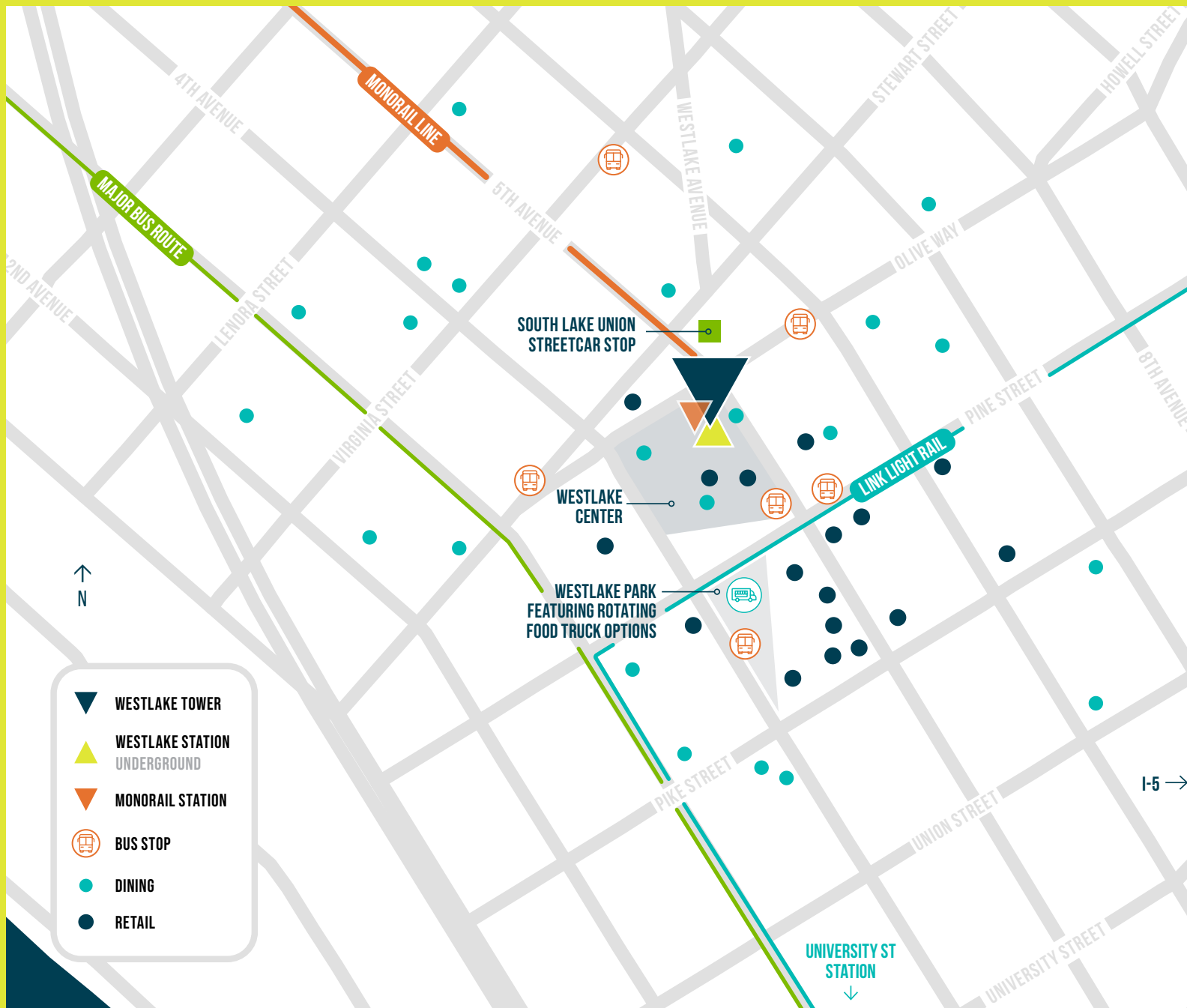
 **REMODELED
LOBBY**



**LOCKER ROOMS
& SHOWERS** 



**FULL SERVICE
GYM** 



ALL ACCESS

Get ready for the most convenient commute in Seattle – every mode of transportation is steps away from the front door. Plus, enjoy easy access to downtown, South Lake Union, and Belltown amenities.

100
TRANSIT SCORE

1/1,500
RSF PARKING

99
WALK SCORE

SECURE
BIKE STORAGE

[CLICK TO VIEW AVAILABILITIES](#)

LEASING:



LLOYD LOW
+1 206 607 1796
lloyd.low@jll.com

JOE GOWAN
+1 206 607 1738
joe.gowan@jll.com

OWNED &
MANAGED BY:



WESTLAKE TOWER · 1601 5TH AVENUE · SEATTLE, WA 98101 · WESTLAKETOWERSEA.COM

© 2025 Jones Lang LaSalle IP, Inc. All rights reserved. All information contained herein is from sources deemed reliable; however, no representation or warranty is made to the accuracy thereof. Jones Lang LaSalle