



For lease

Commerce Park West
Industrial/Flex Buildings

3380-3480 Industrial Blvd
West Sacramento, CA 95691

Available Suites:

3380 Industrial Blvd
Suites 104-105

3410 Industrial Blvd
Suite 100

Professionally owned and managed by:



Property highlights

- Freeway fronting business park
 - 5 Minutes to Downtown Sacramento
 - Enterprise zone
 - Class A business park
 - Business friendly City of West Sacramento
- Zoned: BP
 - 3.5:1,000 SF parking
 - Building signage available
 - Grade level loading
 - Electric & gas service: PG&E

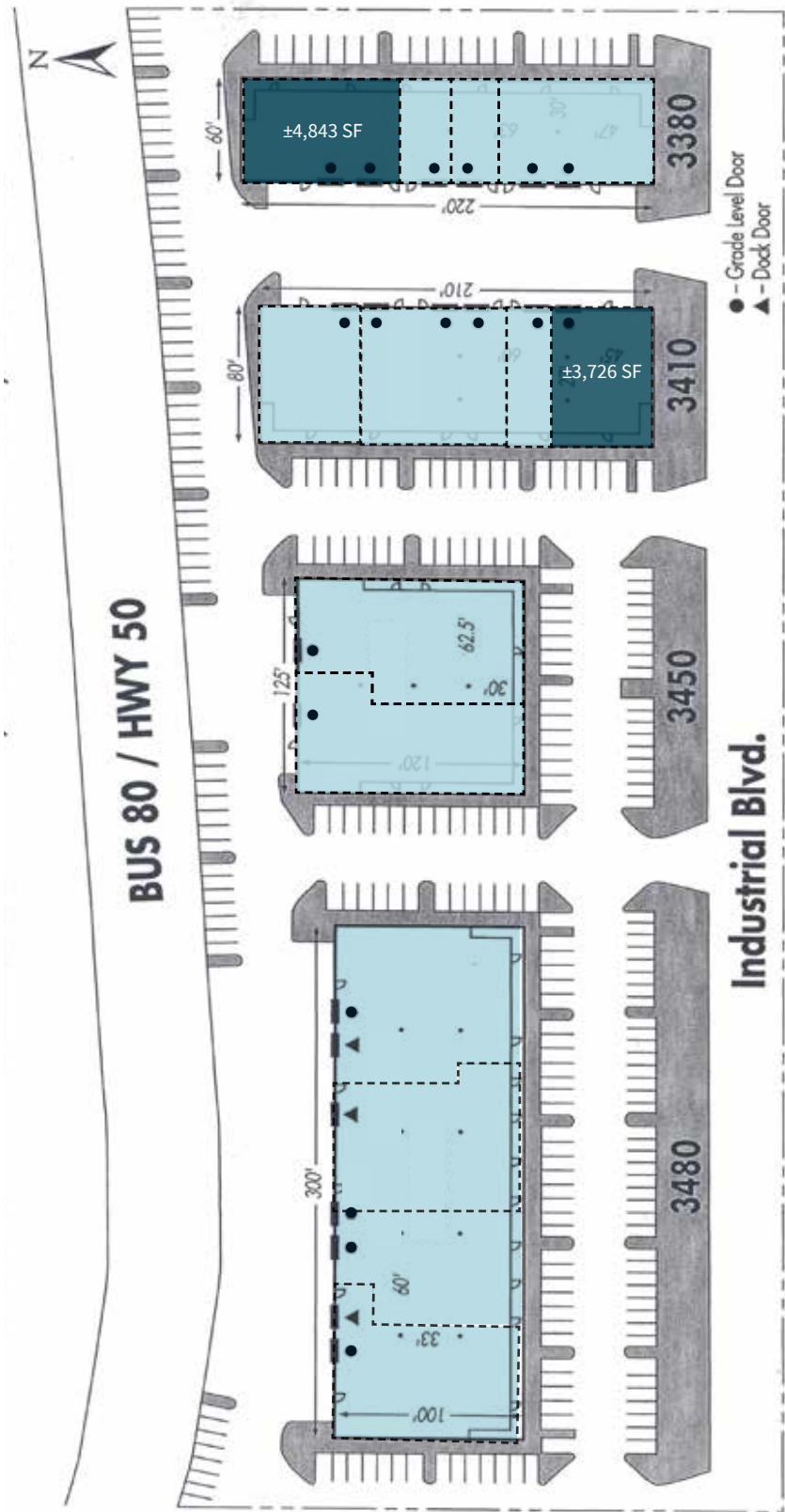


Available Suites

3380 Industrial Blvd	3410 Industrial Blvd	3450 Industrial Blvd	3480 Industrial Blvd
Suites 104-105: ±4,843 SF office w/warehouse available now	Suite 100: ±3,726 SF office w/possible warehouse available w/30-day notice	Fully leased	Fully leased

Site plan

- Available
- Leased



SITE PLAN NOT TO SCALE.
ALL MEASUREMENTS ARE APPROXIMATE.

Floor plan

3380 Industrial Blvd

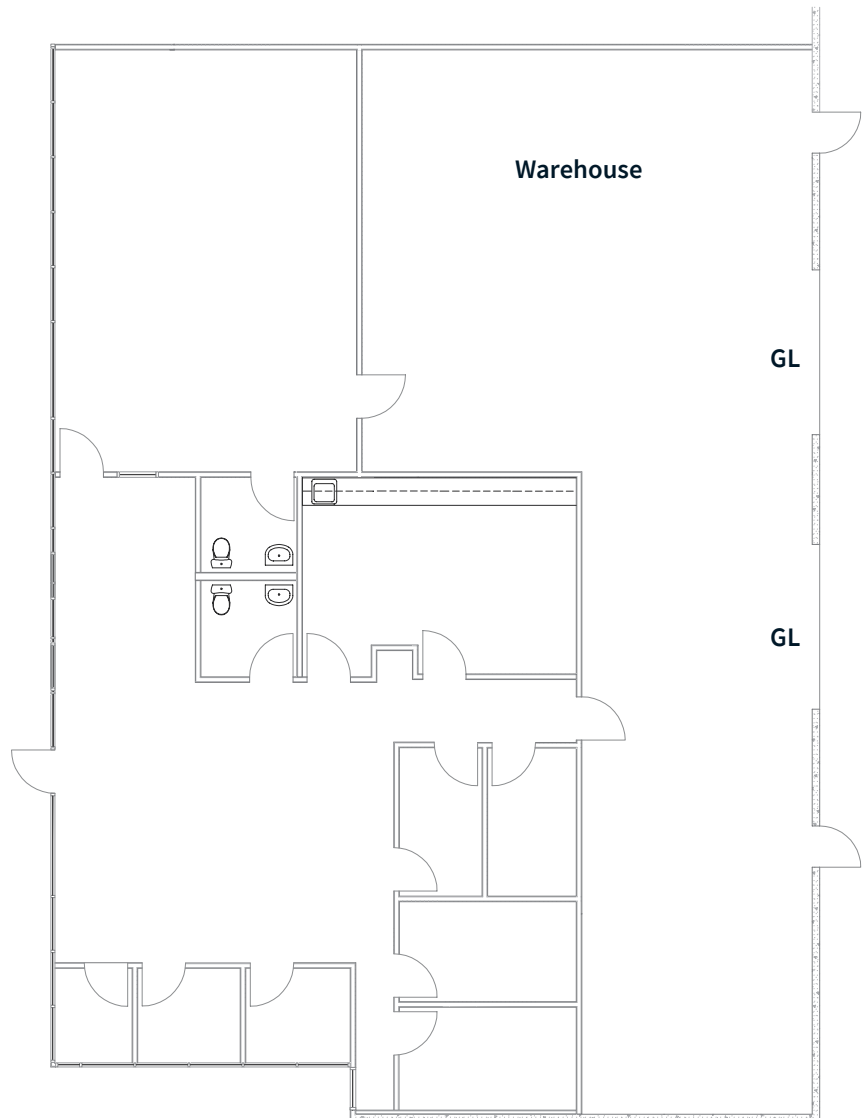
Suites 104-105

±4,843 SF

office w/warehouse

\$0.82 PSF + NNN

Available now



GL = Grade level door

*FLOOR PLAN NOT TO SCALE.
ALL MEASUREMENTS ARE APPROXIMATE.*

Floor plan

3410 Industrial Blvd

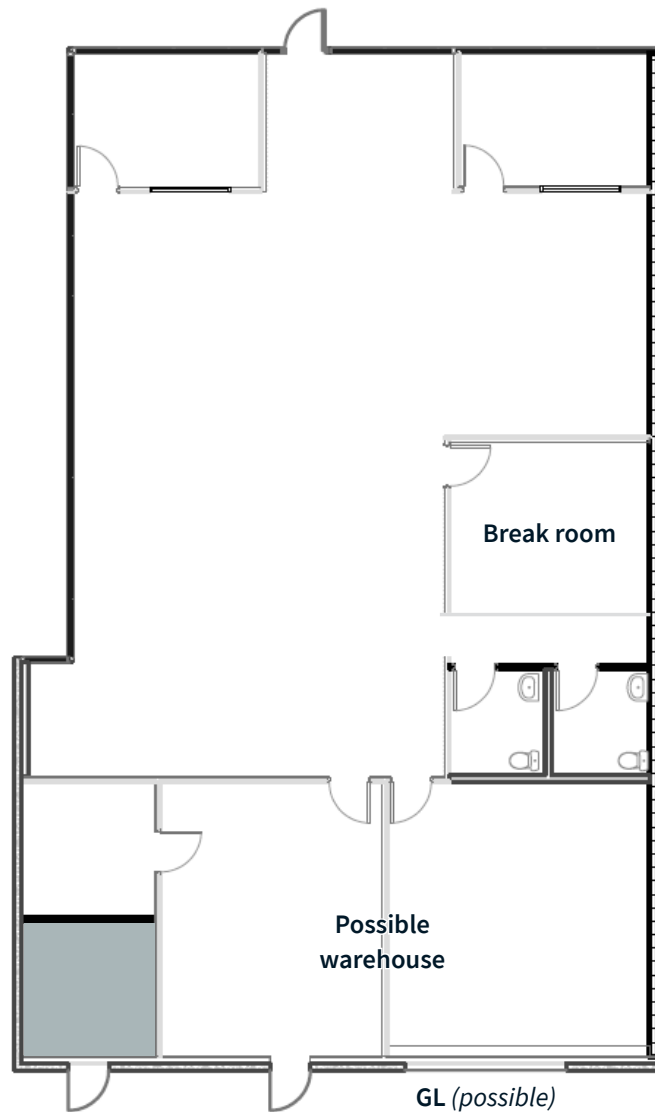
Suite 100

±3,726 SF

office w/ possible warehouse

\$0.85 PSF + NNN

Available with 30-day notice



GL = Possible grade-level door

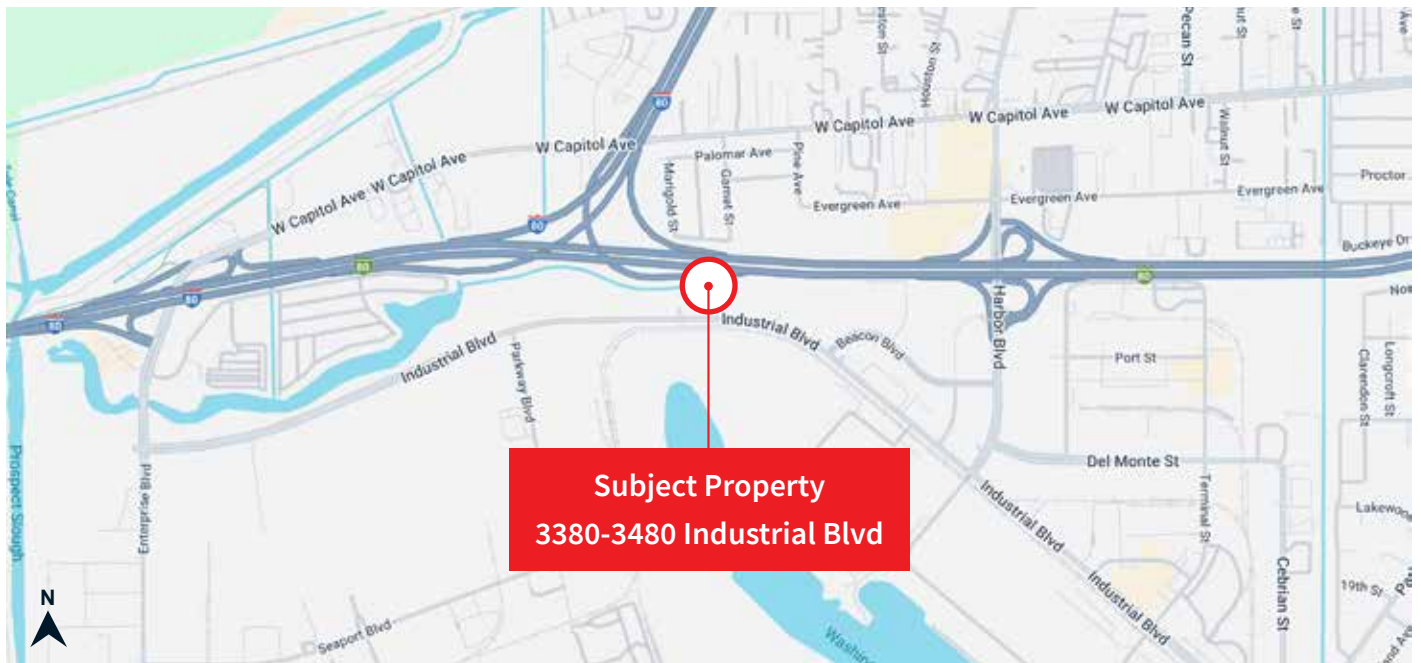
FLOOR PLAN NOT TO SCALE.
ALL MEASUREMENTS ARE APPROXIMATE.

Photos Suites 104-105

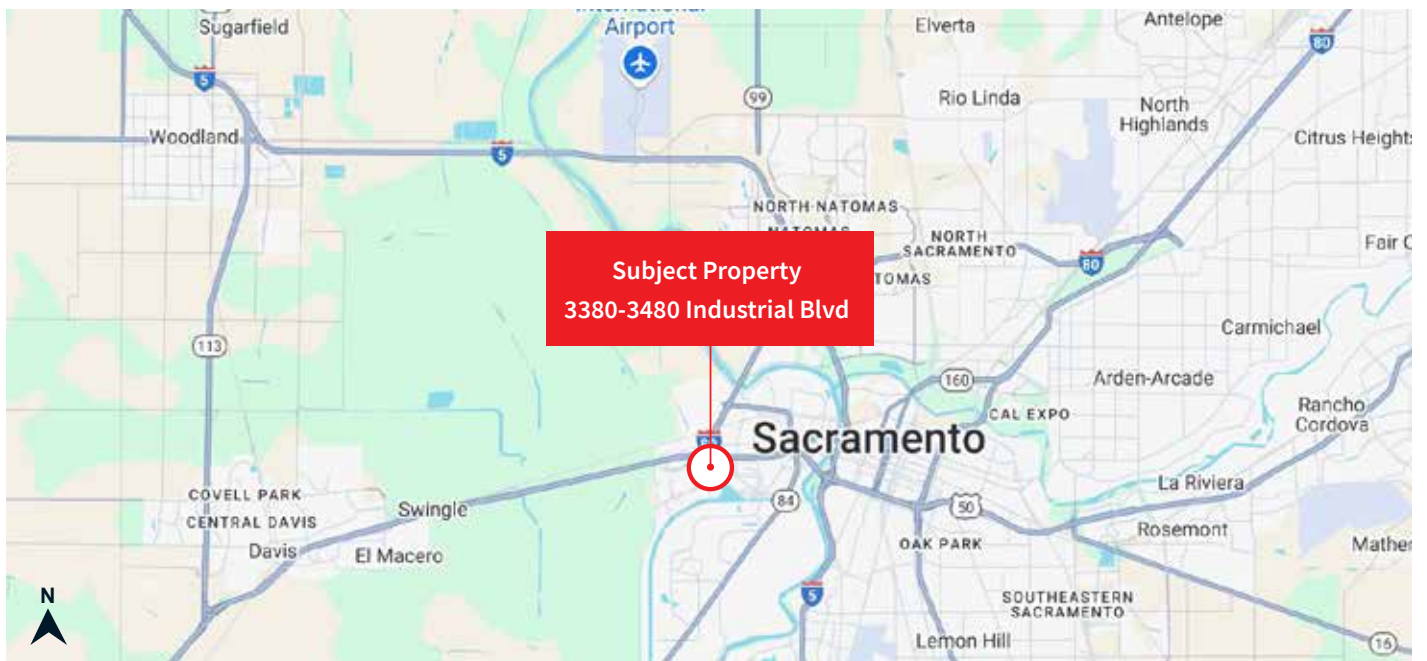


Location maps

Street map



Regional map



MAPS NOT TO SCALE

For lease

Commerce Park West
Industrial/Flex Buildings

3380-3480 Industrial Blvd
West Sacramento, CA 95691

JLL Sacramento Industrial Team

Dominic Smith

Senior Associate

Dominic.Smith@jll.com

+1 916 995 9396

RE Lic. 02106714

RJ Jimenez

Associate

RJ.Jimenez@jll.com

+1 940 597 9341

RE Lic. 02248675

Mike Luca, SIOR

Senior Managing Director

Mike.Luca@jll.com

+1 916 214 0466

RE Lic. 01447904

Jones Lang LaSalle

Brokerage, Inc.

CA Real Estate License #01856260