



For lease

Retail/Office Space in
Urbandale off I-35/80

Availability: 1,356 RSF

Lease rate: \$18.00/RSF NNN

11101-11148 Plum Drive
Urbandale, Iowa 50322

Property overview

- Available space:
 - ◊ Suite 11125 : 1,356 RSF
- Lease rate: \$18.00/RSF NNN
- Est. OPEX: \$10.35/RSF

Urban Loop Landing is a 22,066 RSF retail building located in a Super Target and Home Depot anchored center. The retail center offers excellent signage opportunities. Regional high-traffic location off I-35/80 with freeway visibility. Co-tenants include 5 Borough Bagels, Kaizen Health & Wellness, Burkenbine Family Chiropractic, Green Dimension, All State, Great Clips, Quizno's, State Logistics, Top Nails and Stacey's Bridal.

Meredith Hedstrom

Vice President

meredith.hedstrom@jll.com

+1 515 419 2963

Nick Anderson

Associate

nicholas.anderson@jll.com

+1 515 729 6015

Marcus R. Pitts, CCIM, SIOR

Senior Managing Director

marcus.pitts@jll.com

+1 515 556 4727

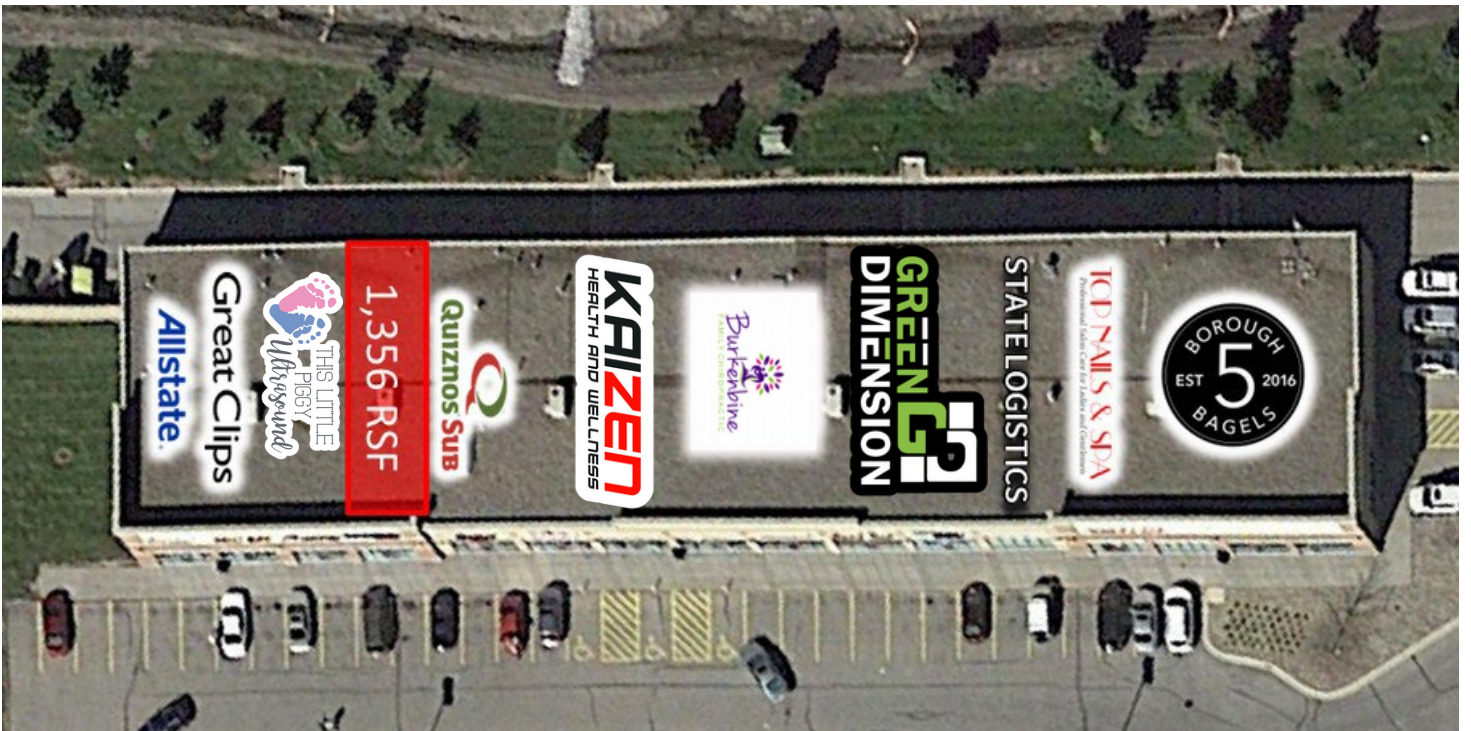
jll.com/des-moines

Jones Lang LaSalle Americas, Inc.

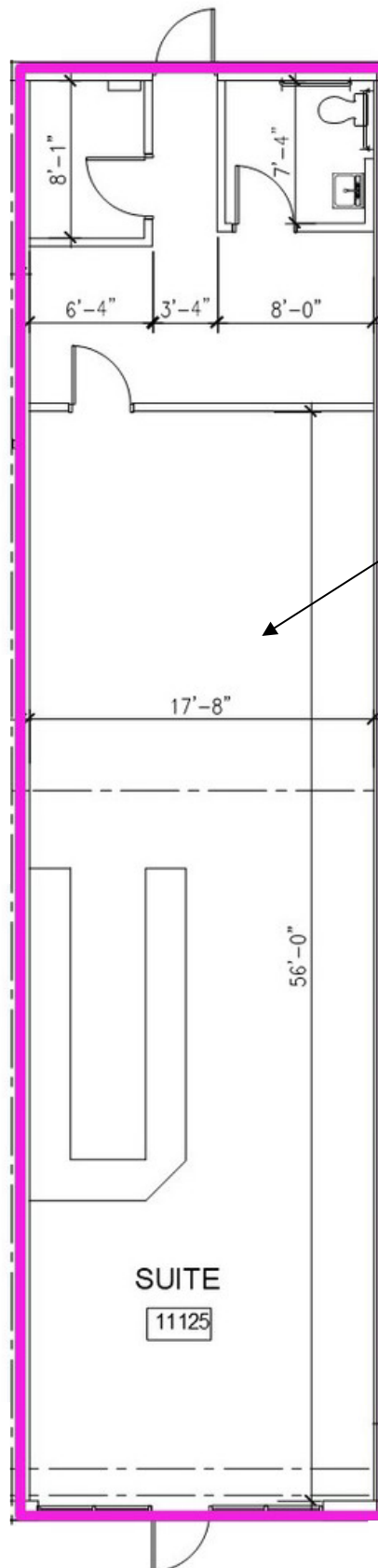
Property photos



Aerial view



Floorplan



AVAILABLE
Suite 11125
1,356 RSF

Front entrance

Urban Loop Landing

11101-11148 Plum Drive | Urbandale, Iowa 50322



Demographics

	1 mile	3 miles	5 miles
Est. population	1,856	50,594	155,295
Est. households	847	19,380	61,878
Est. Average HH income	\$76,178	\$93,330	\$84,960

Traffic counts

NW Urbandale Dr. & Plum Dr.	21,800 VPD
Interstate 80/35	89,900 VPD

Contact broker for additional information

jll.com/des-moines

Meredith Hedstrom
Vice President
meredith.hedstrom@jll.com
+1 515 419 2963

Nick Anderson
Associate
nicholas.anderson@jll.com
+1 515 729 6015

Marcus R. Pitts, CCIM, SIOR
Senior Managing Director
marcus.pitts@jll.com
+1 515 556 4727