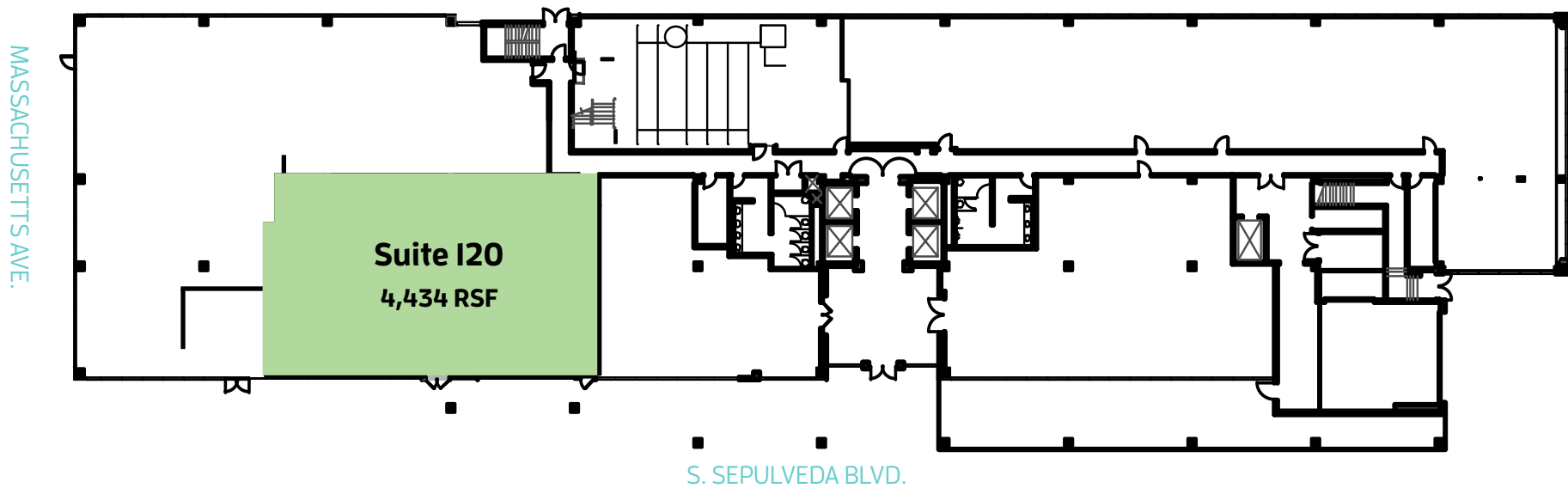


# First Floor

4,434 SF available



1640SEPULVEDA.COM

**JACLYN WARD**  
Managing Director  
+1 310 595 3618  
jaclyn.ward@jll.com  
Lic. #01912455

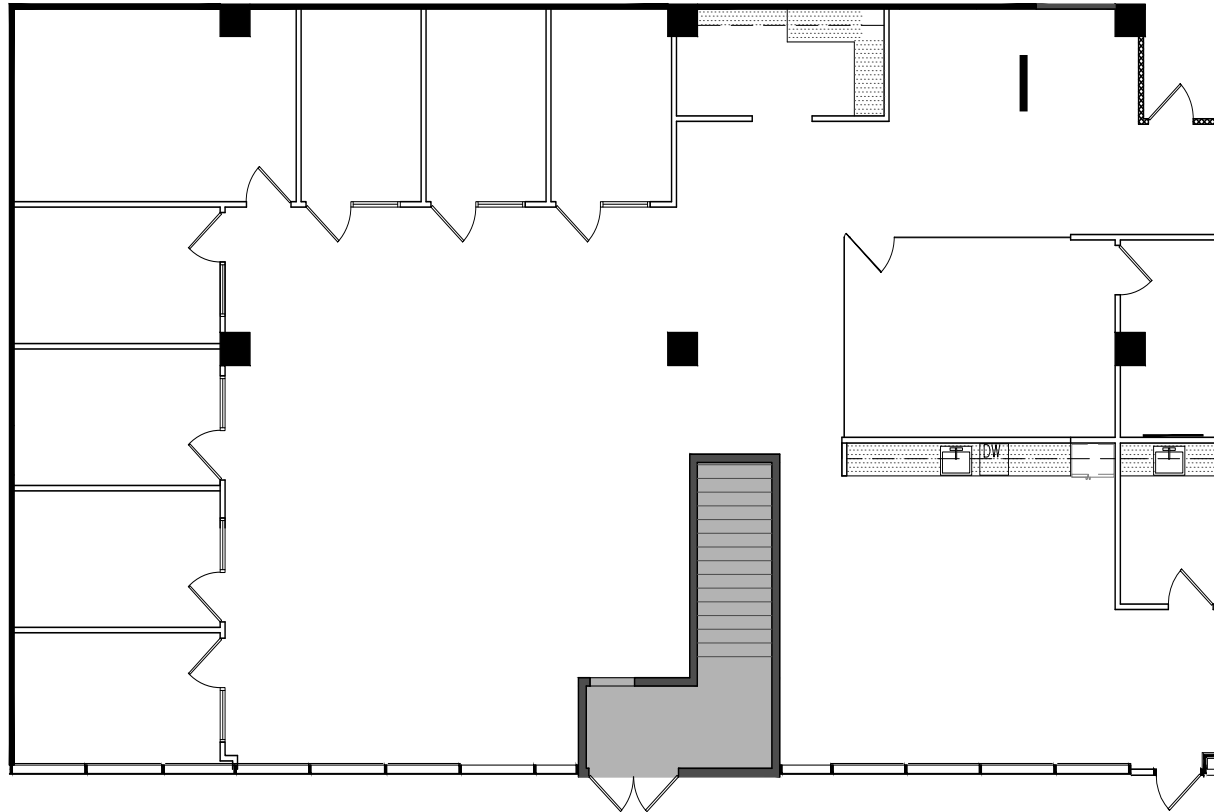
**BRIAN NIEHAUS**  
Managing Director  
+1 310 595 3824  
brian.niehaus@jll.com  
Lic. #01836528

**CASSIE TROSCLAIR**  
Senior Vice President  
+1 310 595 3613  
cassie.troscclair@jll.com  
Lic. #02021435

# First Floor

Suite I20 - **4,434 SF** available now

Sepulveda-frontage, above-standard ceiling height



1640SEPULVEDA.COM

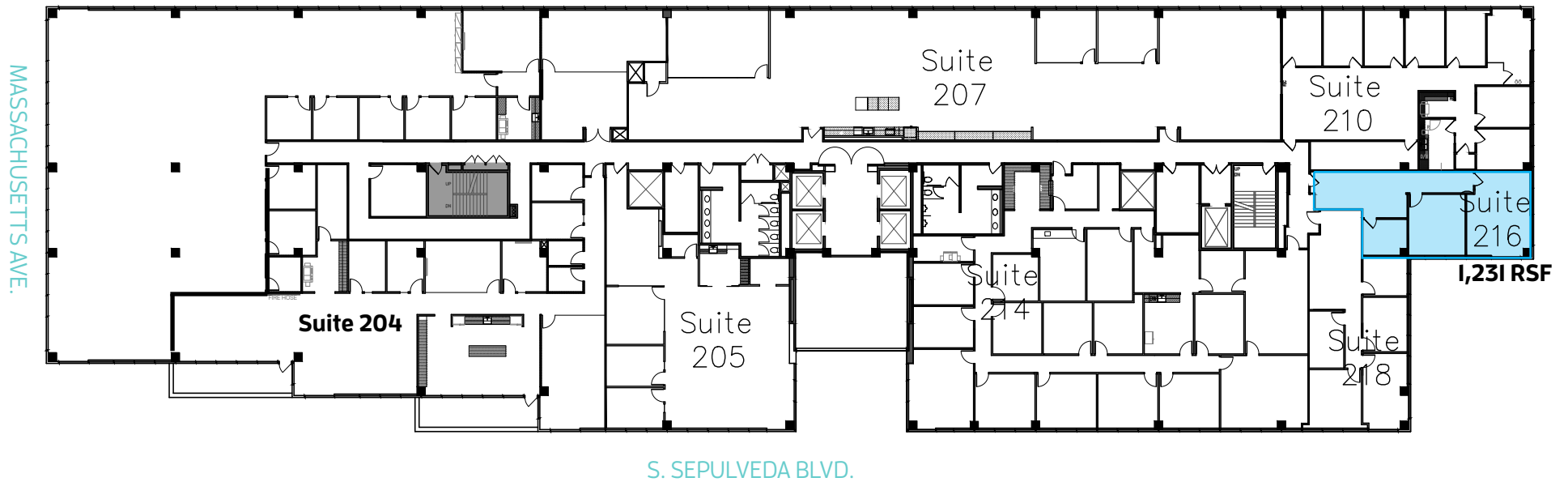
**JACLYN WARD**  
Managing Director  
+1 310 595 3618  
jaclyn.ward@jll.com  
Lic. #01912455

**BRIAN NIEHAUS**  
Managing Director  
+1 310 595 3824  
brian.niehaus@jll.com  
Lic. #01836528

**CASSIE TROSCLAIR**  
Senior Vice President  
+1 310 595 3613  
cassie.troscclair@jll.com  
Lic. #02021435

# Second Floor

1,231 SF available



1640SEPULVEDA.COM

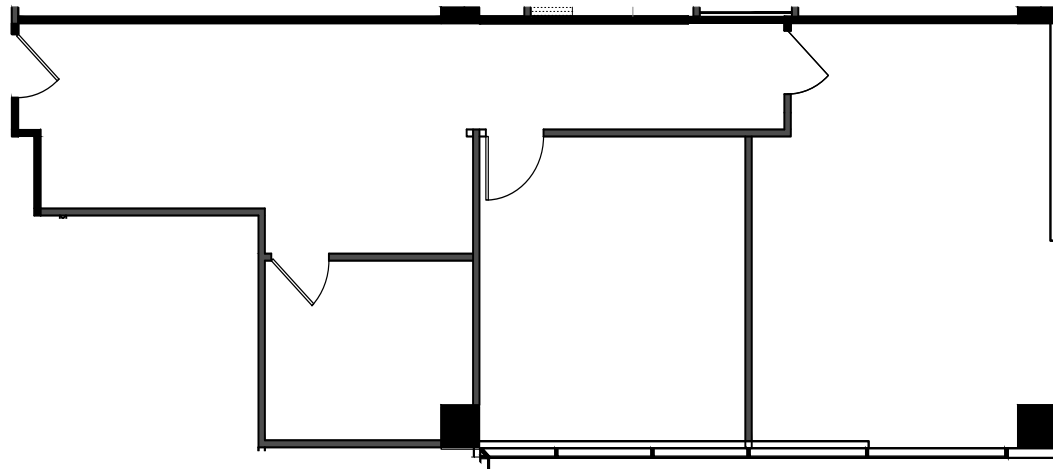
**JACLYN WARD**  
Managing Director  
+1 310 595 3618  
jaclyn.ward@jll.com  
Lic. #01912455

**BRIAN NIEHAUS**  
Managing Director  
+1 310 595 3824  
brian.niehaus@jll.com  
Lic. #01836528

**CASSIE TROSCLAIR**  
Senior Vice President  
+1 310 595 3613  
cassie.troscclair@jll.com  
Lic. #02021435

# Second Floor

Suite 216 - **1,231 SF** available now



1640SEPULVEDA.COM

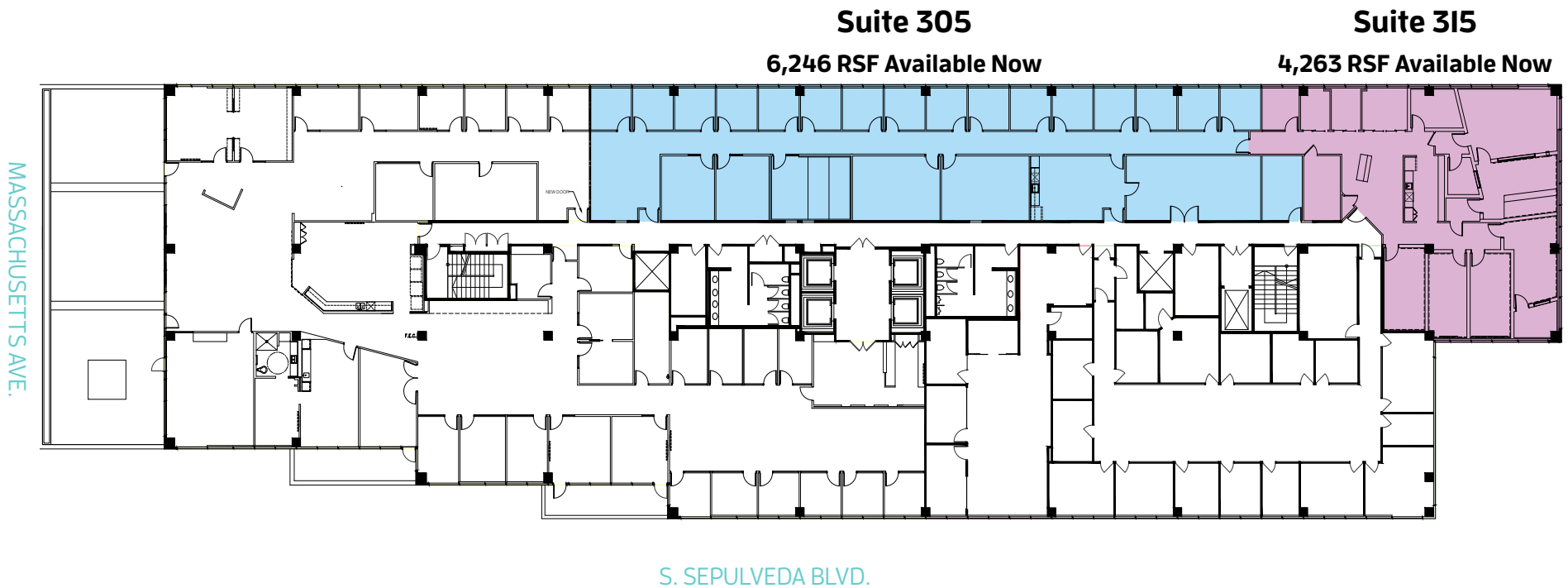
**JACLYN WARD**  
Managing Director  
+1 310 595 3618  
jaclyn.ward@jll.com  
Lic. #01912455

**BRIAN NIEHAUS**  
Managing Director  
+1 310 595 3824  
brian.niehaus@jll.com  
Lic. #01836528

**CASSIE TROSCLAIR**  
Senior Vice President  
+1 310 595 3613  
cassie.troscclair@jll.com  
Lic. #02021435

# Third Floor

Up to 10,509 SF available



1640SEPULVEDA.COM

**JACLYN WARD**  
Managing Director  
+1 310 595 3618  
jaclyn.ward@jll.com  
Lic. #01912455

**BRIAN NIEHAUS**  
Managing Director  
+1 310 595 3824  
brian.niehaus@jll.com  
Lic. #01836528

**CASSIE TROSCLAIR**  
Senior Vice President  
+1 310 595 3613  
cassie.troscclair@jll.com  
Lic. #02021435

Up to 8,823 SF available

**3,989 RSF; Available Now**



## 4,834 RSF; Spec Suite Available Now

S. SEPULVEDA BLVD.



**1640SEPULVEDA.COM**

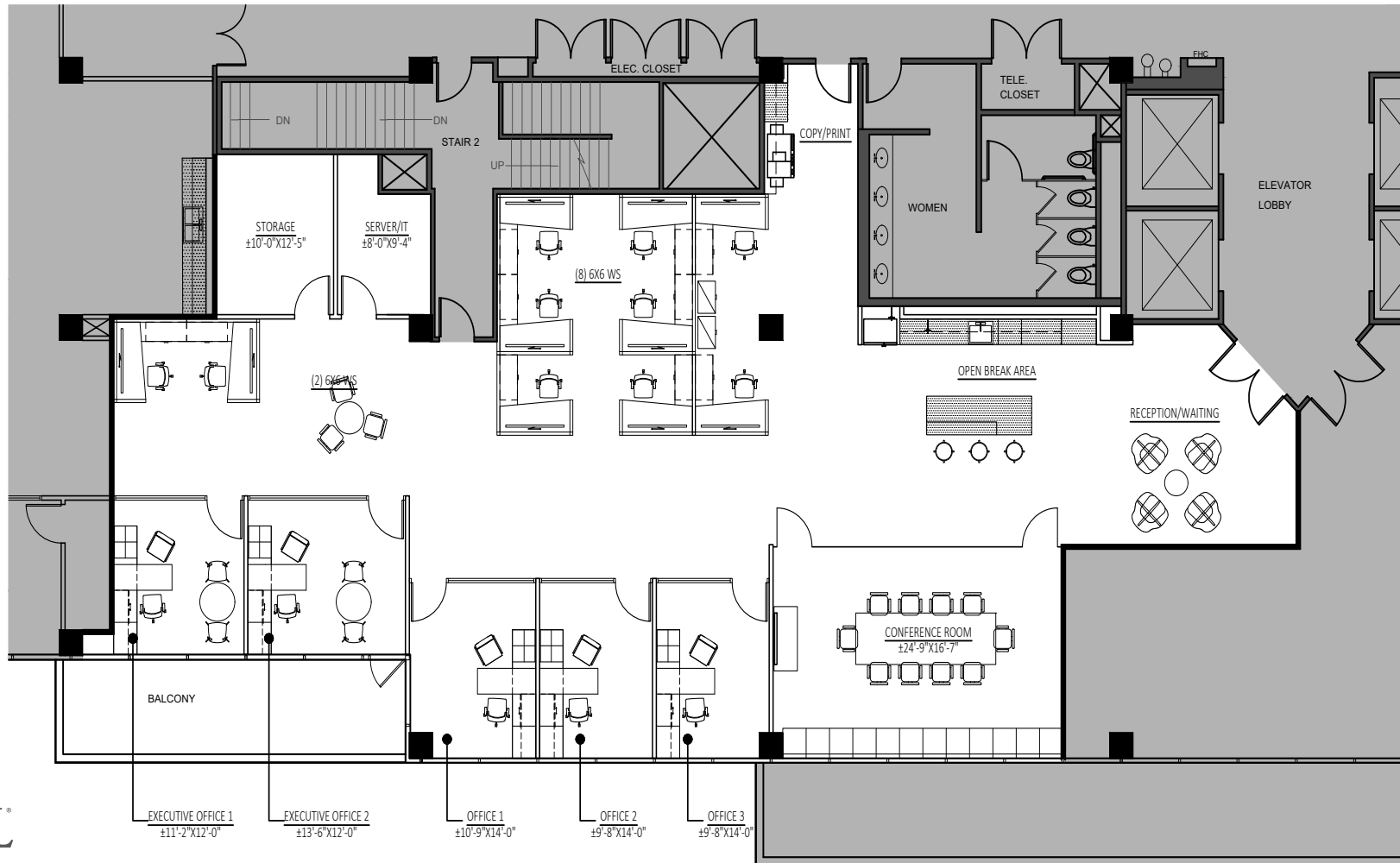
**JACLYN WARD**  
Managing Director  
+1 310 595 3618  
jaclyn.ward@jll.com  
Lic. #01912455

**BRIAN NIEHAUS**  
Managing Director  
+1 310 595 3824  
brian.niehaus@jll.com  
Lic. #01836528

**CASSIE TROSCLAIR**  
Senior Vice President  
+1 310 595 3613  
cassie.trosclair@jll.com  
Lic. #02021435

# Fourth Floor

Suite 440 - **4,834 SF** Spec Suite Available Now



1640SEPULVEDA.COM

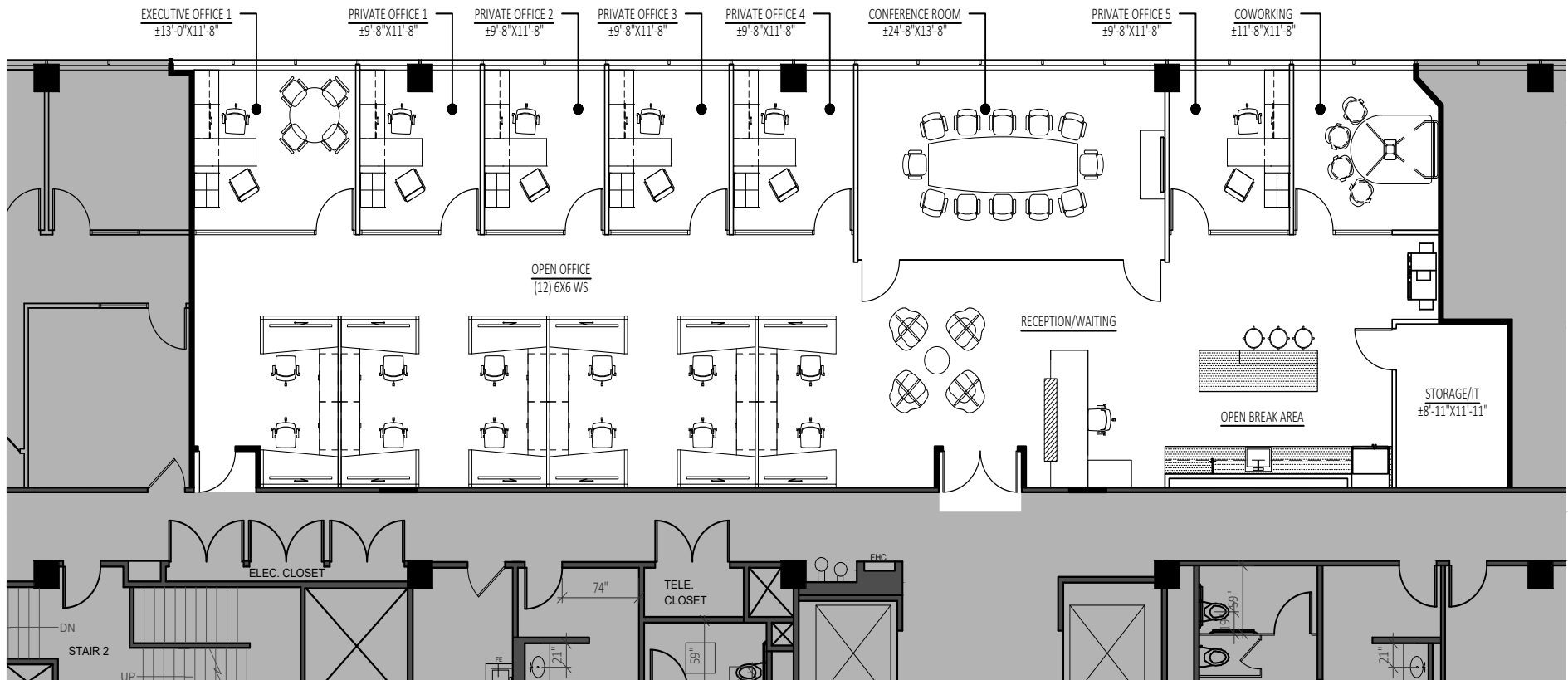
**JACLYN WARD**  
Managing Director  
+1 310 595 3618  
jaclyn.ward@jll.com  
Lic. #01912455

**BRIAN NIEHAUS**  
Managing Director  
+1 310 595 3824  
brian.niehaus@jll.com  
Lic. #01836528

**CASSIE TROSCLAIR**  
Senior Vice President  
+1 310 595 3613  
cassie.trosclair@jll.com  
Lic. #02021435

# Fourth Floor

Suite 450 - **3,989 SF** Hypothetical test fit



1640SEPULVEDA.COM

**JACLYN WARD**  
Managing Director  
+1 310 595 3618  
jaclyn.ward@jll.com  
Lic. #01912455

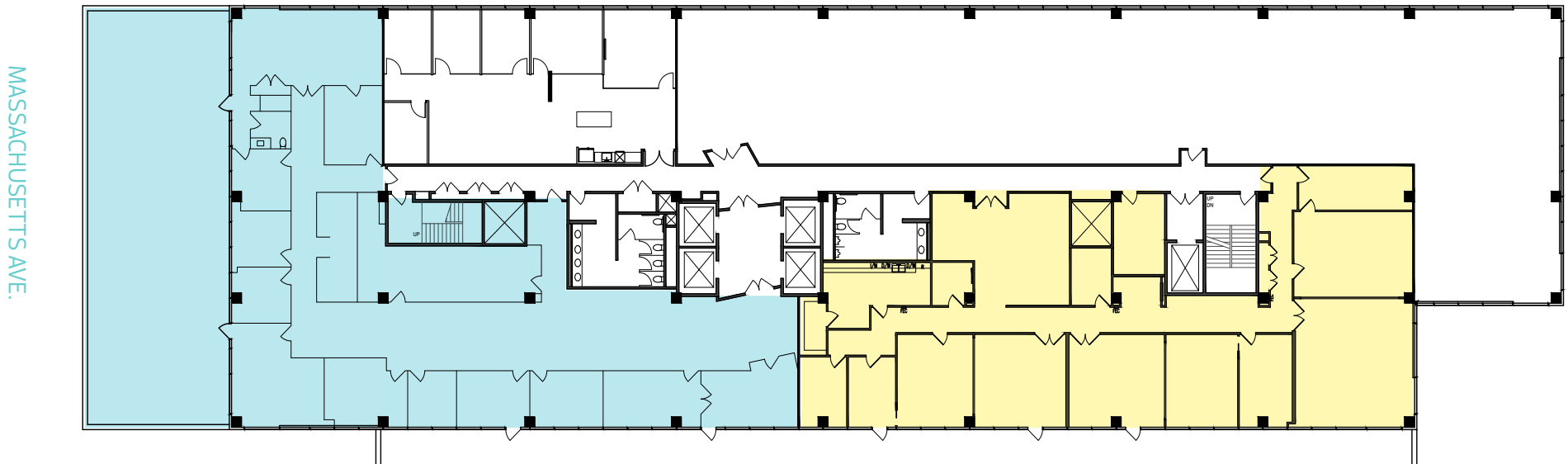
**BRIAN NIEHAUS**  
Managing Director  
+1 310 595 3824  
brian.niehaus@jll.com  
Lic. #01836528

**CASSIE TROSCLAIR**  
Senior Vice President  
+1 310 595 3613  
cassie.troscclair@jll.com  
Lic. #02021435



# Fifth Floor

Up to 13,037 SF available



## Suite 520

6,663 RSF; Available 7/1/25

Includes 3,500 SF private terrace

S. SEPULVEDA BLVD.

## Suite 500

6,374 RSF; Available 3/1/25



1640SEPULVEDA.COM

**JACLYN WARD**  
Managing Director  
+1 310 595 3618  
jaclyn.ward@jll.com  
Lic. #01912455

**BRIAN NIEHAUS**  
Managing Director  
+1 310 595 3824  
brian.niehaus@jll.com  
Lic. #01836528

**CASSIE TROSCLAIR**  
Senior Vice President  
+1 310 595 3613  
cassie.troscclair@jll.com  
Lic. #02021435