



## ONE MONTGOMERY SUBLEASE

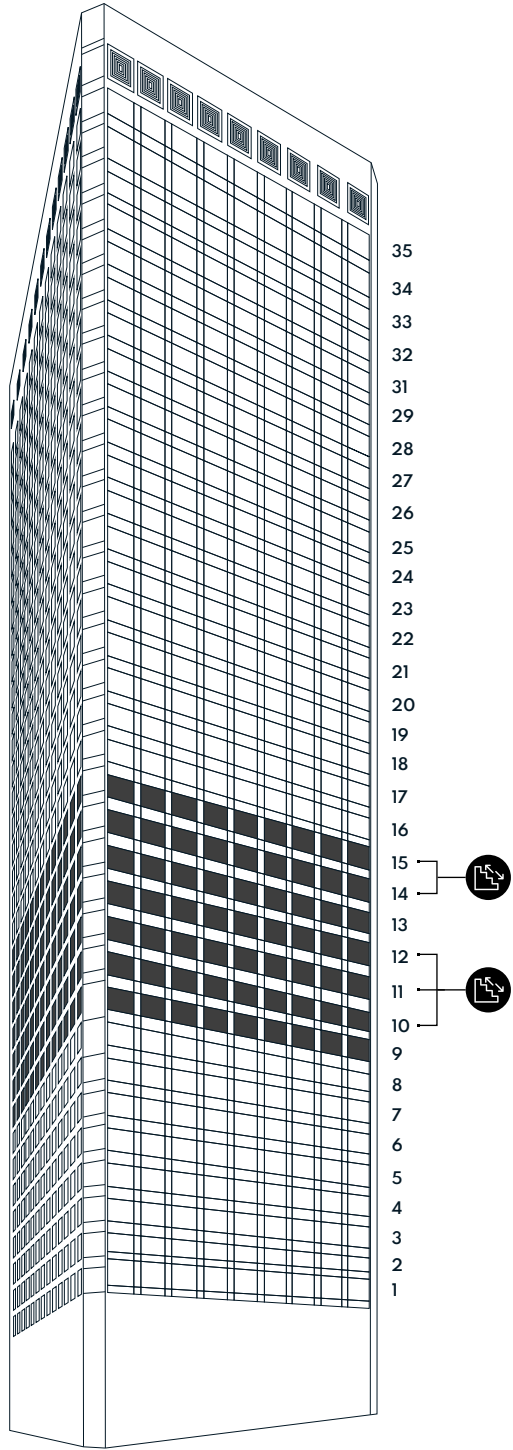
Multiple Block Options Available  
+/- 19,000 - 134,000 RSF



Jones Lang LaSalle Americas, Inc. License #: CO508577000

# STACKING PLAN

## Contiguous Options

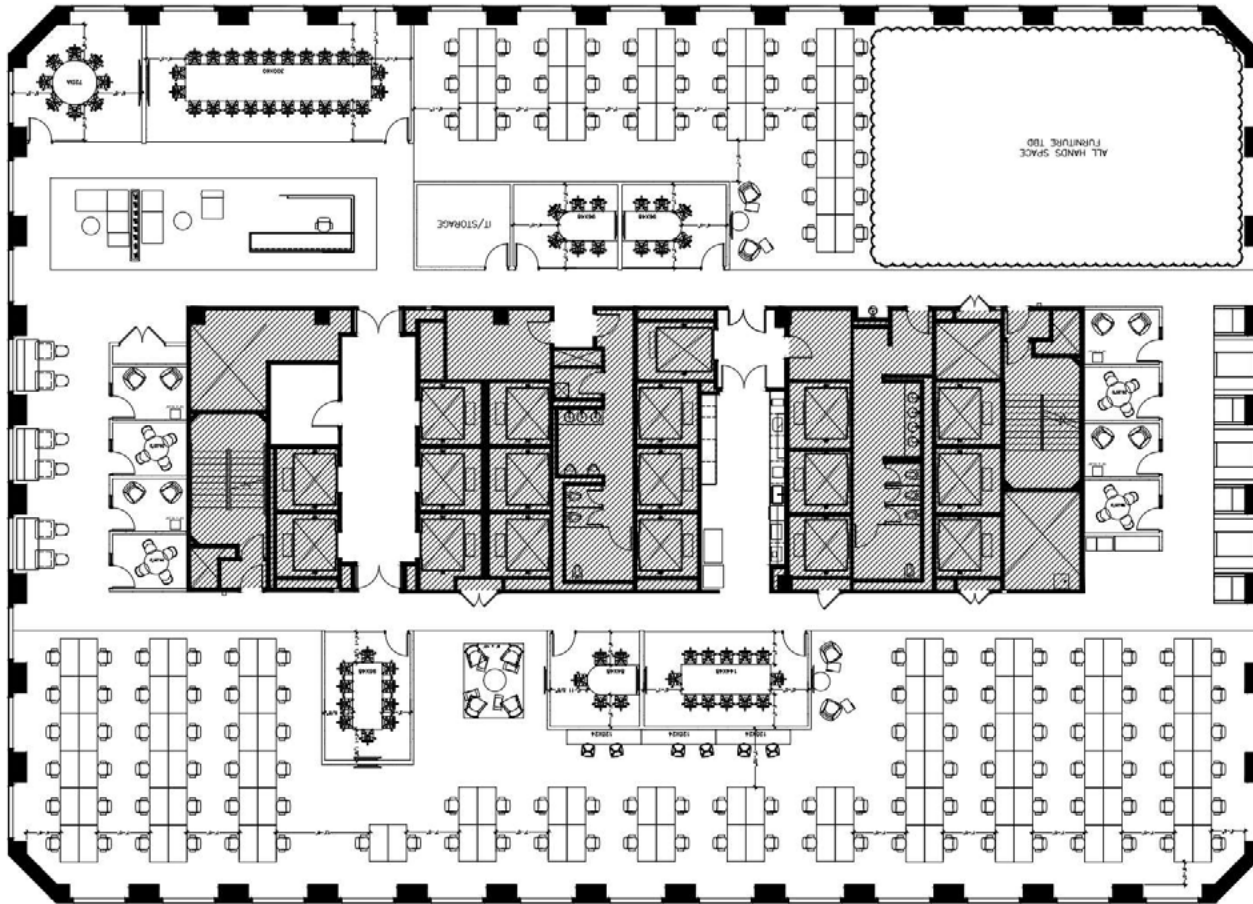


Floor	RSF
15	19,102
14	18,953
13	19,068
12	19,064
11	19,063
10	19,379
9	19,350

CLICK ON TAB TO KNOW MORE 

# 9<sup>TH</sup> FLOOR

19,350 RSF



## SPACE NOTES

- Available Now
- Term: Flexible up to May 2028
- Rate: Please inquire
- Mostly open floor plan
- 126 desks in place
- Large all-hands/café space
- Large kitchen
- Furniture available



Take Virtual Tour



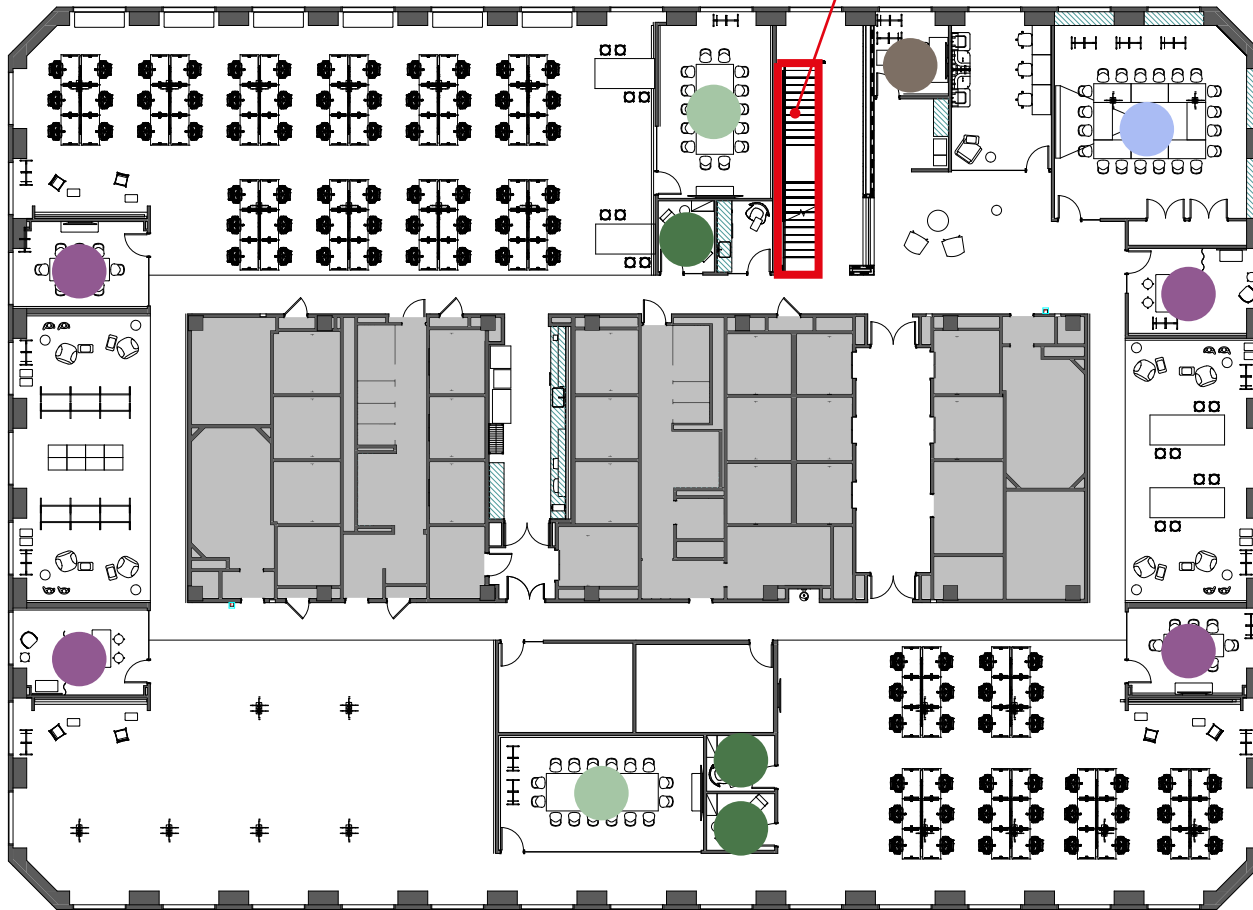




# 10<sup>TH</sup> FLOOR

19,379 RSF

Staircase to 11th floor



## SPACE NOTES

- 132 Workstations
- 3 Phone Booths
- 4 Small Conference Rooms
- 1 Large Conference Room
- 1 Board Room
- Internal Staircase
- 10th -11th Floor must be leased together

● S (5-8) ● L (13-18) ● Phone (1-2) ● Huddle (3-4) ● XL (19+)



Take Virtual Tour

# 11<sup>TH</sup> FLOOR

19,063 RSF



## SPACE NOTES

- 58 Workstations
- Internal Staircase
- 3 Phone Booths
- 4 Small Conference Rooms
- Kitchen Area
- Large Co-working Area

● S (5-8)   ● L (13-18)   ● Phone (1-2)   ● Huddle (3-4)   ● XL (19+)

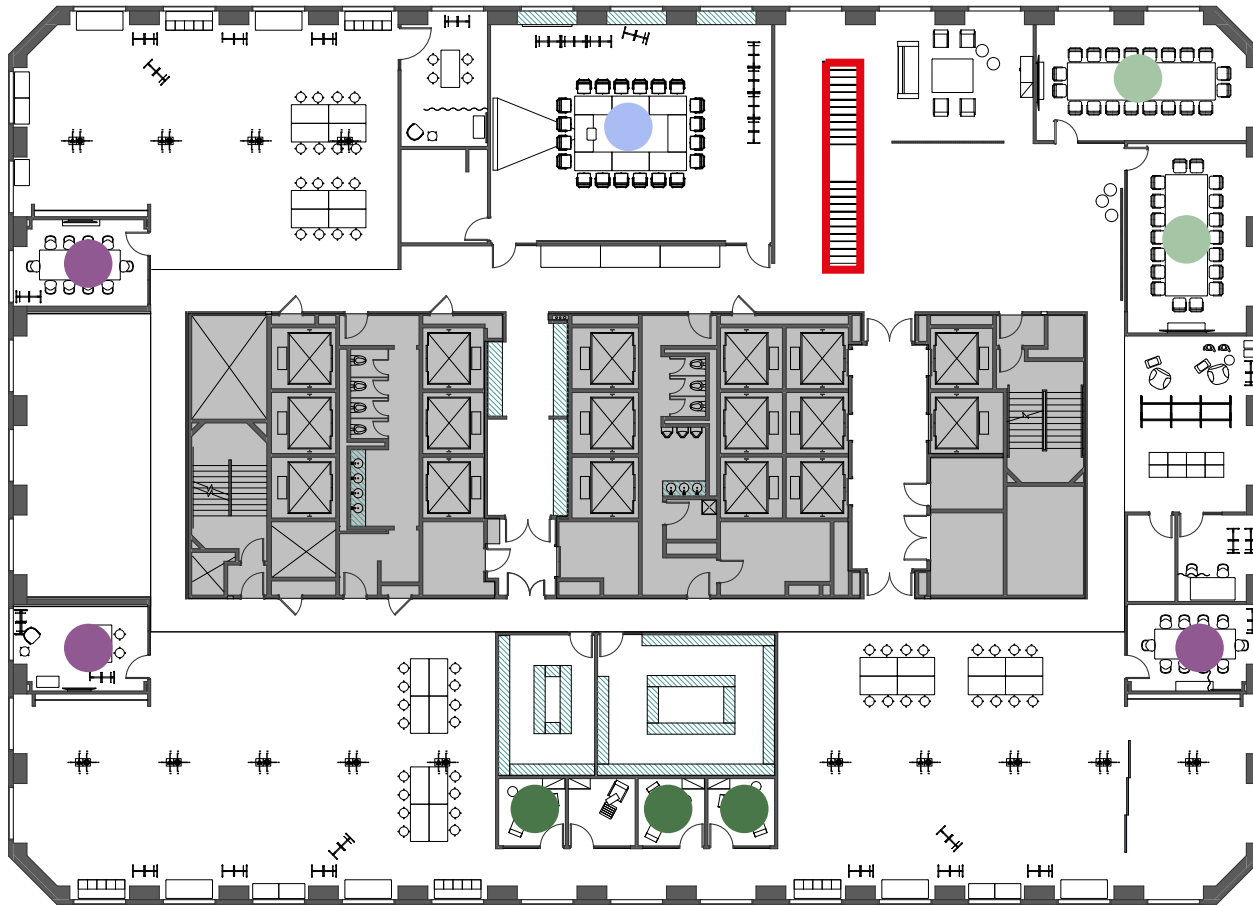


Take Virtual Tour



# 12<sup>TH</sup> FLOOR

19,064 RSF



## SPACE NOTES

- 102 Workstations
- Internal Staircase
- 3 Phone Rooms
- 3 Small Conference Rooms
- 2 Large Conference Rooms
- 1 Board Room

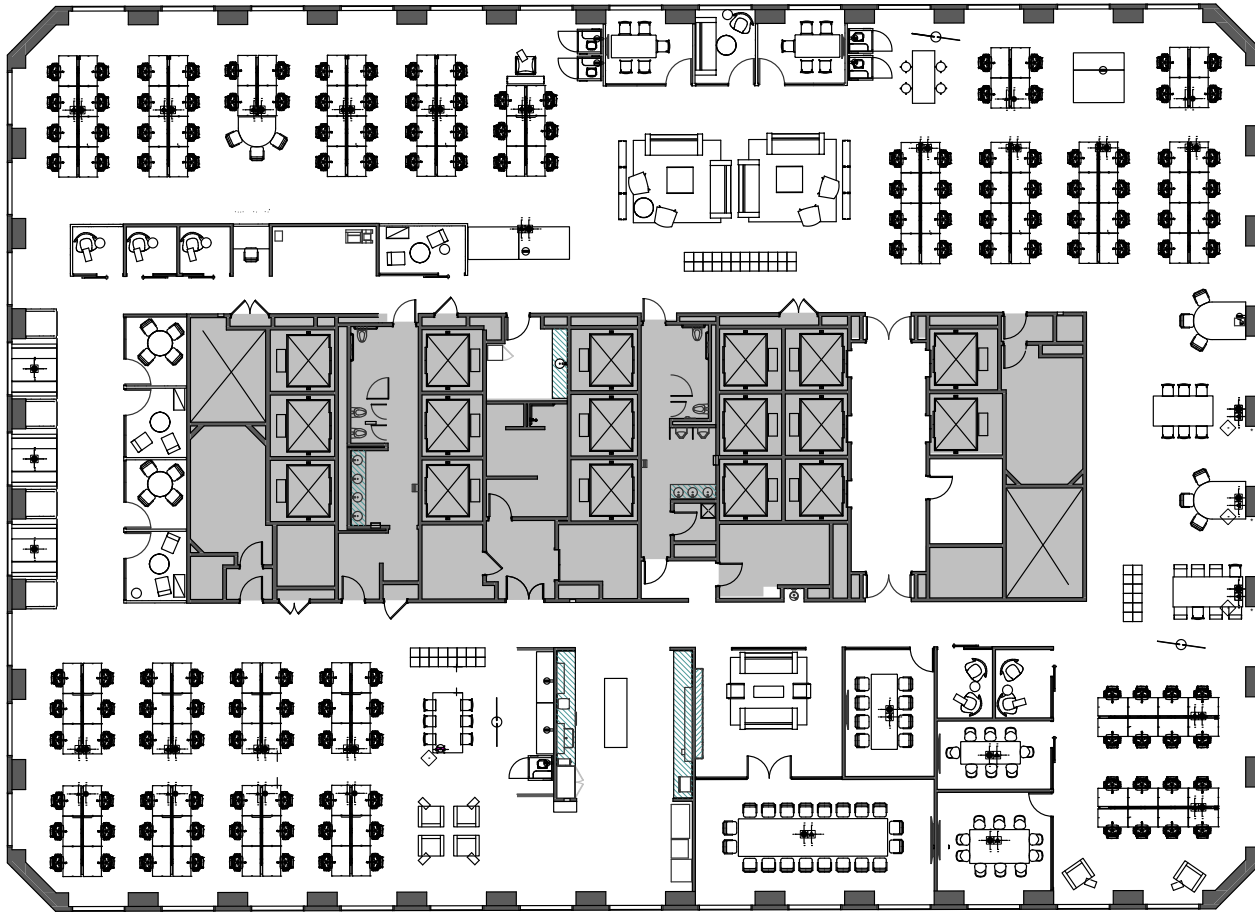
● S (5-8)   ● L (13-18)   ● Phone (1-2)   ● Huddle (3-4)   ● XL (19+)



Take Virtual Tour

# 13<sup>TH</sup> FLOOR

19,068 RSF



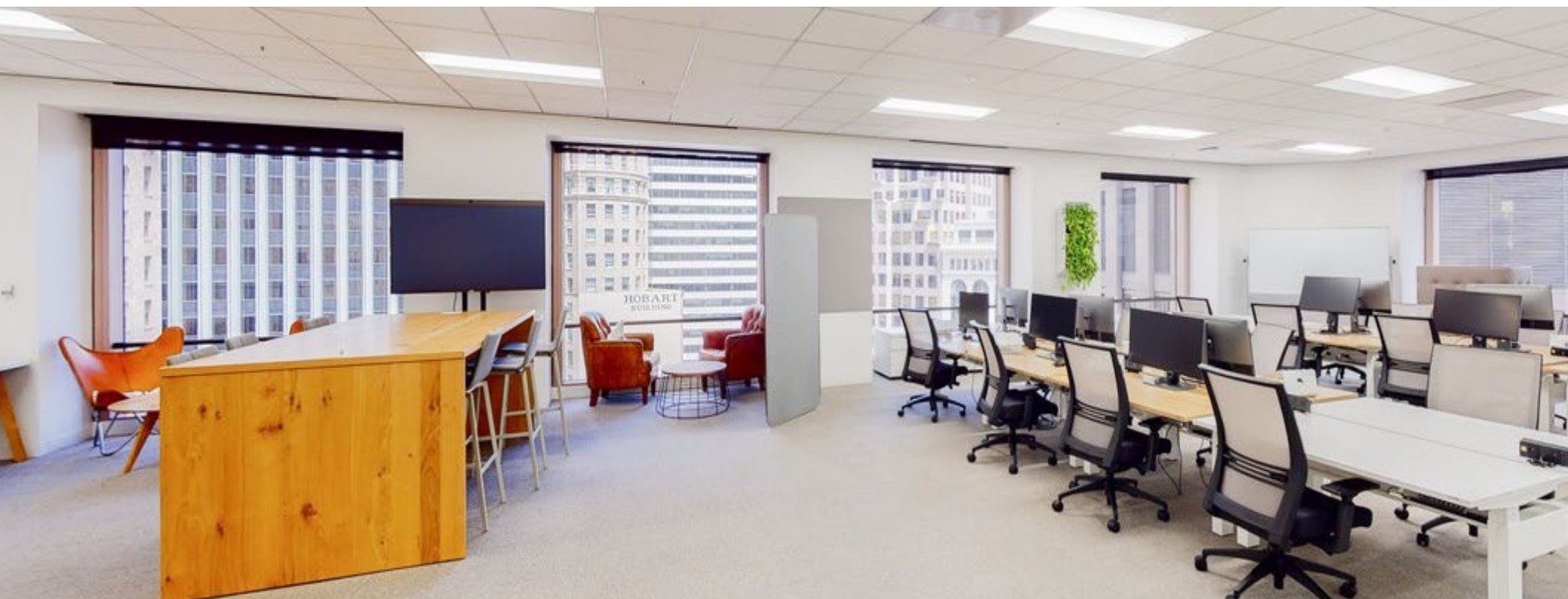
## SPACE NOTES

- Available Now
- Term: Flexible up to May 2028
- Rate: Please inquire
- Mostly open floor plan
- +/- 124 Desks in place
- Large kitchen
- One 20-person boardroom
- Ten 4-10 person Conference rooms
- Collaborative meeting spaces
- Copy room
- Furniture available



Take Virtual Tour





# 14<sup>TH</sup> FLOOR

18,953 RSF



## SPACE NOTES

- Available Now
- Term: Flexible up to May 2028
- Rate: Please inquire
- Training/all-hands inspired layout with divisible walls
- Room for +/- 100 workstations
- +/- 48 Desks in place
- Large kitchen with large all-hands/café
- Eight 4-6-person conference rooms
- One 12-person conference room
- Furniture available
- Internal stairwell connecting to the 15th Floor\*
- Must be leased with 15th Floor



Take Virtual Tour





# 15<sup>TH</sup> FLOOR

19,102 RSF



## SPACE NOTES

- Available Now
- Term: Flexible up to May 2028
- Rate: Please inquire
- Formal reception off elevators
- +/- 104 Desks in place
- One 20-person large boardroom
- Two 4-10-person conference rooms
- Large gallery kitchen
- Multiple collaboration areas
- Furniture available
- Internal stairwell connecting to the 14th floor\*
- Must be leased with 14th Floor



Take Virtual Tour







# CLUB PMC



Client  
Lounge



Conference  
Center



Gym



Showers &  
Lockers



Expansive  
Bike Parking



Parking  
Garage









## HUGH SCOTT

650 468 8688

[hugh.scott@jll.com](mailto:hugh.scott@jll.com)

RE # 01414759

## MICHAEL DEMARIA

415 395 7248

[michael.demaria@jll.com](mailto:michael.demaria@jll.com)

RE # 01856260

Although information has been obtained from sources deemed reliable, JLL does not make any guarantees, warranties or representations, express or implied, as to the completeness or accuracy as to the information contained herein. Any projections, opinions, assumptions or estimates used are for example only. There may be differences between projected and actual results, and those differences may be material. JLL does not accept any liability for any loss or damage suffered by any party resulting from reliance on this information. If the recipient of this information has signed a confidentiality agreement with JLL regarding this matter, this information is subject to the terms of that agreement. ©2024 Jones Lang LaSalle Brokerage, Inc. All rights reserved.



Jones Lang LaSalle Americas, Inc. License #: CO508577000