

# For sublease

1112 E. Kennedy Blvd.  
Tampa, FL 33602



**Lisa Coulter**

*Senior Vice President*

[LisaA.Coulter@jll.com](mailto:LisaA.Coulter@jll.com)

+1 813 387 1319

**Isaac Gilmore**

*Associate*

[Isaac.Gilmore@jll.com](mailto:Isaac.Gilmore@jll.com)

+1 727 431 5599



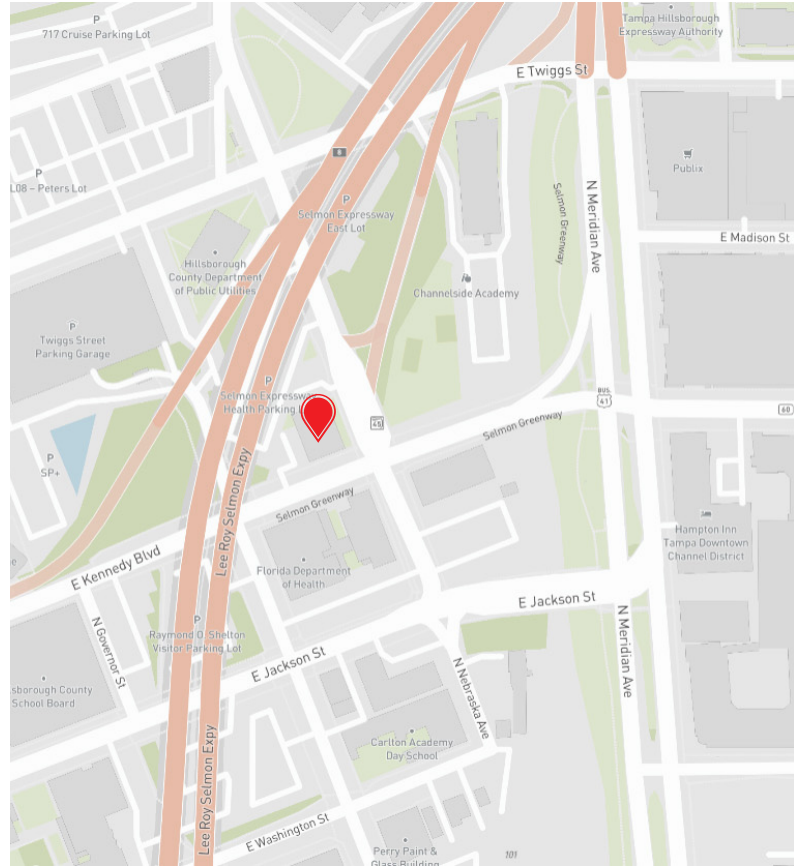
**For sublease / 1112 E. Kennedy Blvd.**

# 1112 E. Kennedy Blvd. Tampa, FL 33602

## Sublease details

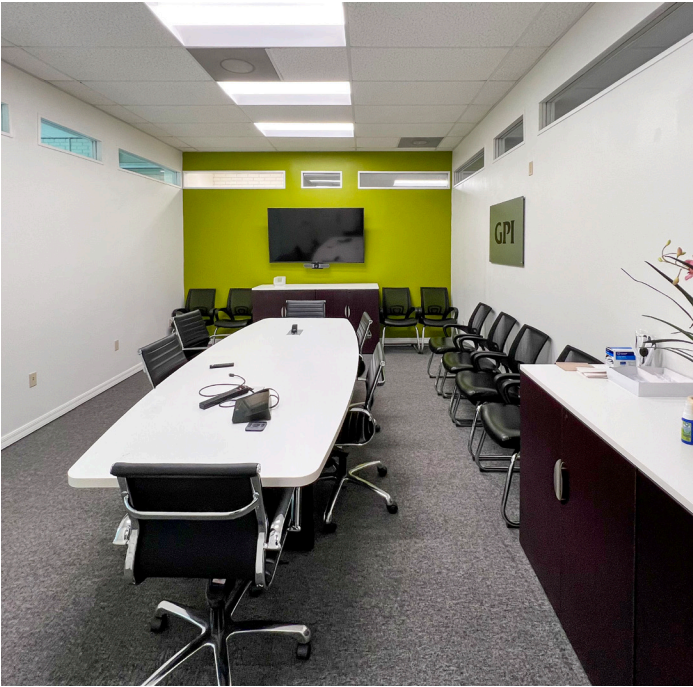
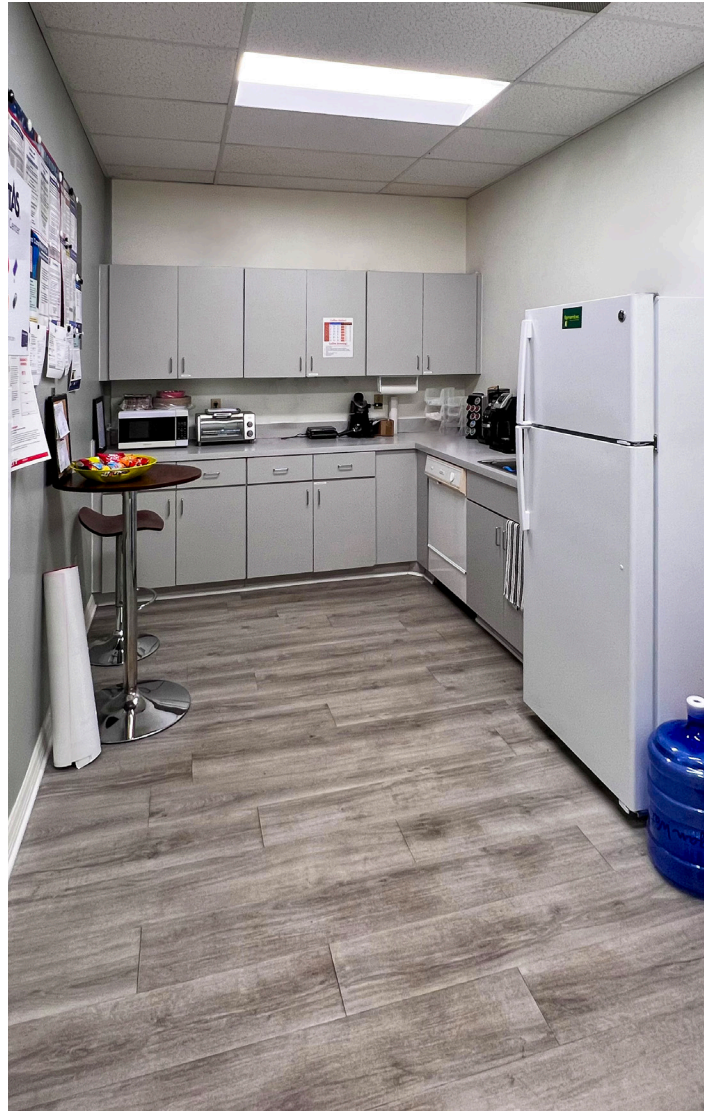
- 4,845 SF
- Lease expires 03/31/2027
- Available within 30 days
- Furniture available, recently renovated
- Negotiable rate
- 4.00/1,000 SF ON-SITE PARKING INCLUDED

Located east of Downtown Tampa, closer to the Channelside residential district, this office building is unique in offering a free-standing, single-tenant building with 4.00/1,000 SF dedicated parking.



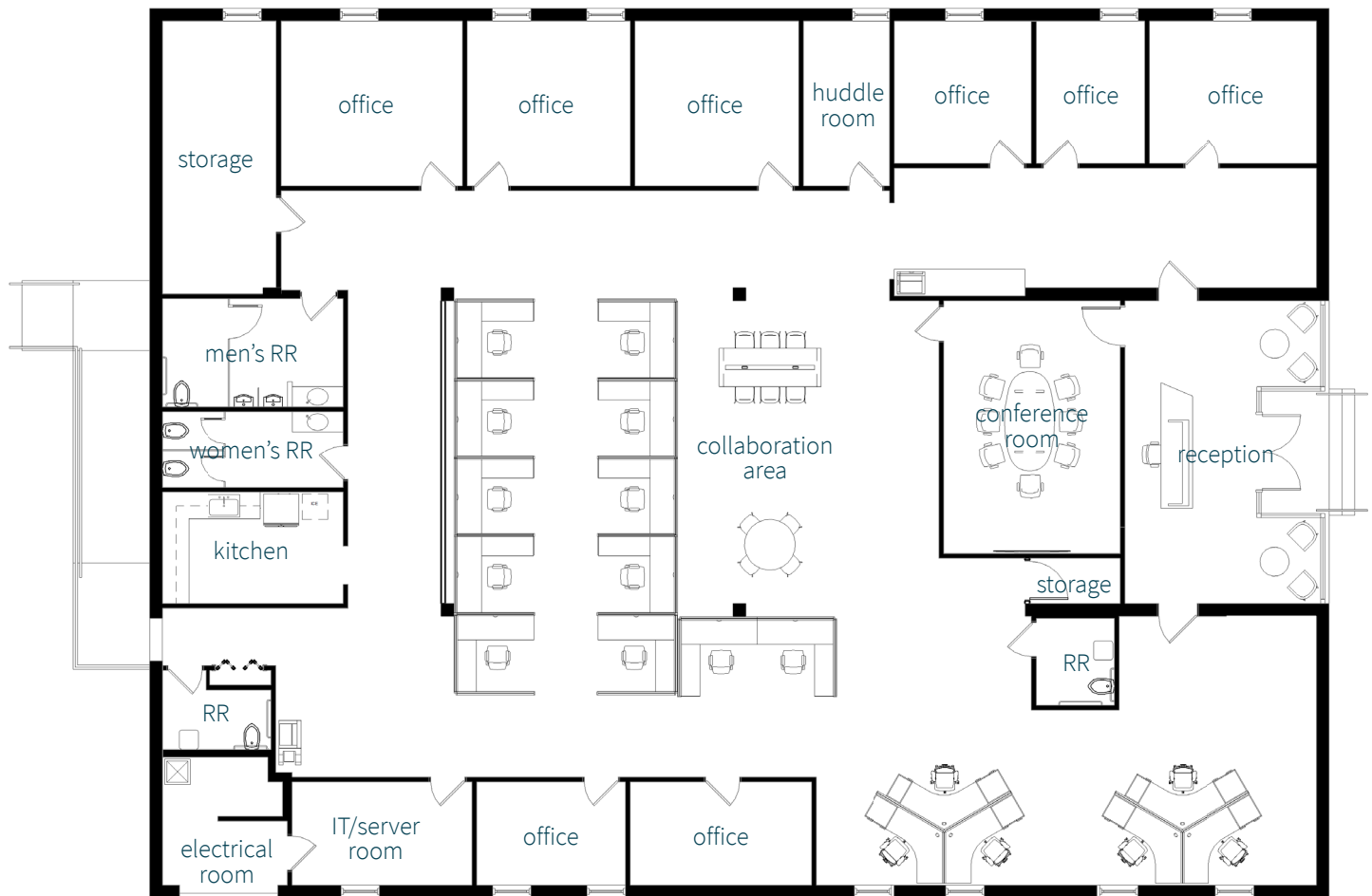


For sublease / 1112 E. Kennedy Blvd.





For sublease / 1112 E. Kennedy Blvd.



Please note, floorplan may not be to scale or represent existing build-out and furnishing



**Lisa Coulter**

*Senior Vice President*

[LisaA.Coulter@jll.com](mailto:LisaA.Coulter@jll.com)

+1 813 387 1319

**Isaac Gilmore**

*Associate*

[Isaac.Gilmore@jll.com](mailto:Isaac.Gilmore@jll.com)

+1 727 431 5599

**jll.com**

©2024 Jones Lang LaSalle Brokerage, Inc. All rights reserved.

Jones Lang LaSalle Brokerage, Inc. License #: BO2033215