



PLAZA 600

SEATTLE'S MOST CONNECTED ADDRESS



600 STEWART STREET
SEATTLE, WA 98101

Office space for lease
plaza600.com



A 20-story office tower in the center of the Denny Triangle, offering exceptional views from every floor and scenes of Seattle's skyline, the Space Needle, and Amazon Spheres.

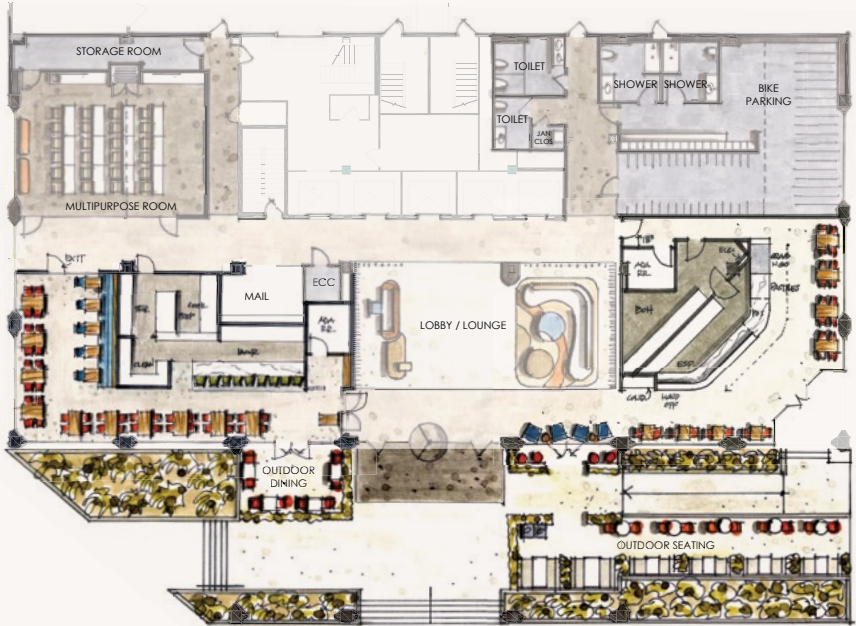
Institutional-grade, local ownership recently completed a long-term recapitalization of Plaza 600 in 2024, providing dedicated capital, stable ownership and a preeminent experience for Plaza 600 tenants.



BUILDING AMENITIES

- VIEWS FROM EVERY FLOOR
- BIKE STORAGE, SHOWERS & PELOTONS
- ON-SITE SECURITY
- ON-SITE SECURED GARAGE PARKING
- CONFERENCE FACILITY
- FITWEL VIRAL RESPONSE CERTIFIED

COMING SOON
New lobby level coffee, wine, and beer.



LOCATION

Plaza 600 is centrally located between Seattle's downtown retail core and South Lake Union neighborhood, and sits at the intersection of Stewart Street, 6th Avenue, and Westlake Avenue. Major employers in the area include Amazon HQ, Google, Nordstrom, Meta, and Apple.

- 50+ 50+ apartment buildings within walking distance
- 60+ 60+ restaurants within 4 blocks
- 10+ 10+ quality hotels within 4 blocks
- 100 Perfect walk score
- 100 Perfect transit score





PLAZA 600

Cleita Harvey

+1 206 607 1794

cleita.harvey@jll.com

Tim Jones

+1 206 971 7011

tim.jones@jll.com

Charlotte Evans

+1 206 607 1720

charlotte.evans@jll.com



Although information has been obtained from sources deemed reliable, neither Owner nor JLL makes any guarantees, warranties or representations, express or implied, as to the completeness or accuracy as to the information contained herein. Any projections, opinions, assumptions or estimates used are for example only. There may be differences between projected and actual results, and those differences may be material. The Property may be withdrawn without notice. Neither Owner nor JLL accepts any liability for any loss or damage suffered by any party resulting from reliance on this information. If the recipient of this information has signed a confidentiality agreement regarding this matter, this information is subject to the terms of that agreement. ©2025. Jones Lang LaSalle IP, Inc. All rights reserved.

