

# For sublease For lease

3222 Phoenixville Pike,  
Malvern, PA



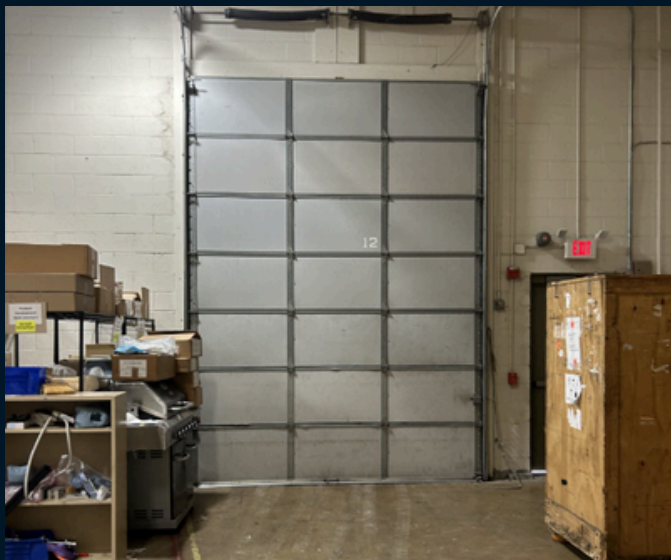
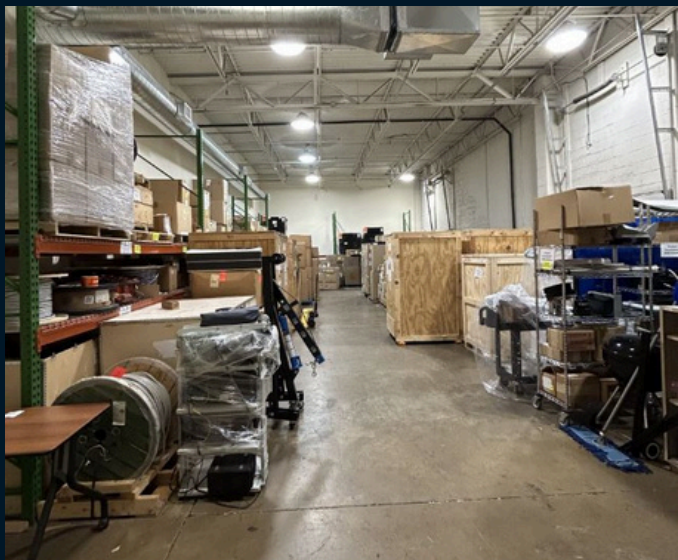


## Space highlights

- LXD: 2/29/2028
- Plug and Play space – furniture available
- Mix of perimeter offices and cubicles
- Training room
- Kitchenette

### Warehouse in rear

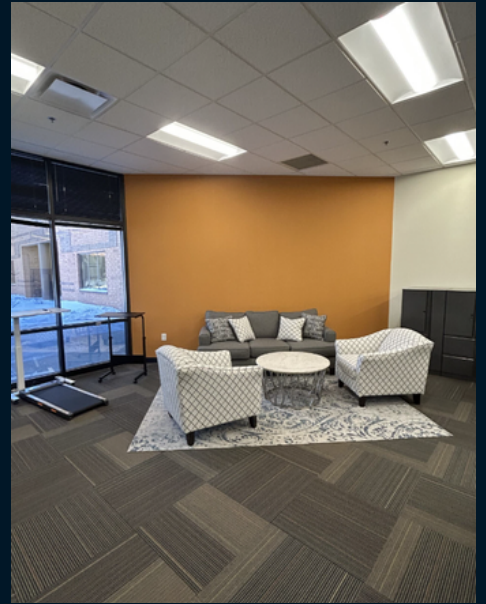
- Separated from office space
- Conditioned
- Multiple loading docks



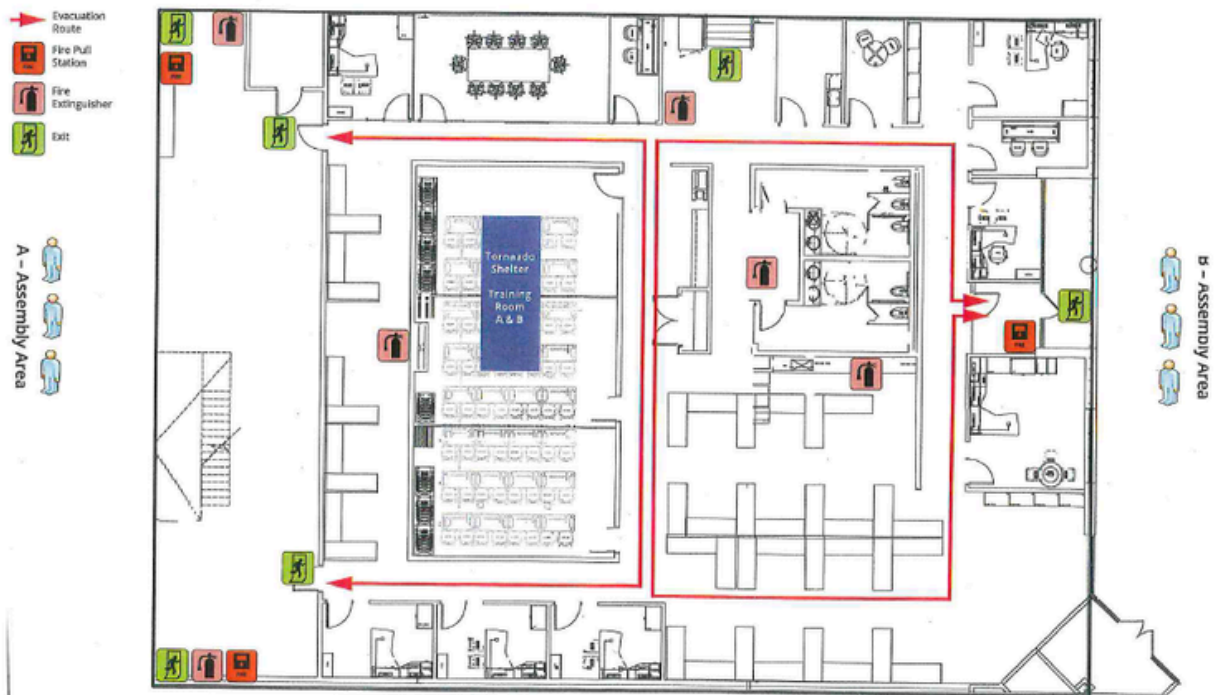


Space photos

For lease



## Property floorplan



**Eric Wahlers**  
Senior Managing Director  
eric.wahlers@jll.com  
+1 610 585 7114

**TJ Romano**  
Associate Vice President  
tj.romano@jll.com  
+1 609 658 7266

**JLL | Jones Lang LaSalle Brokerage, Inc.**  
550 E Swedesford Road, Suite 260  
Wayne, PA 19087  
+1 610 249 2255