



13300 Hickman Road

Clive, IA 50325

16,334 RSF available

One contiguous space

Overview

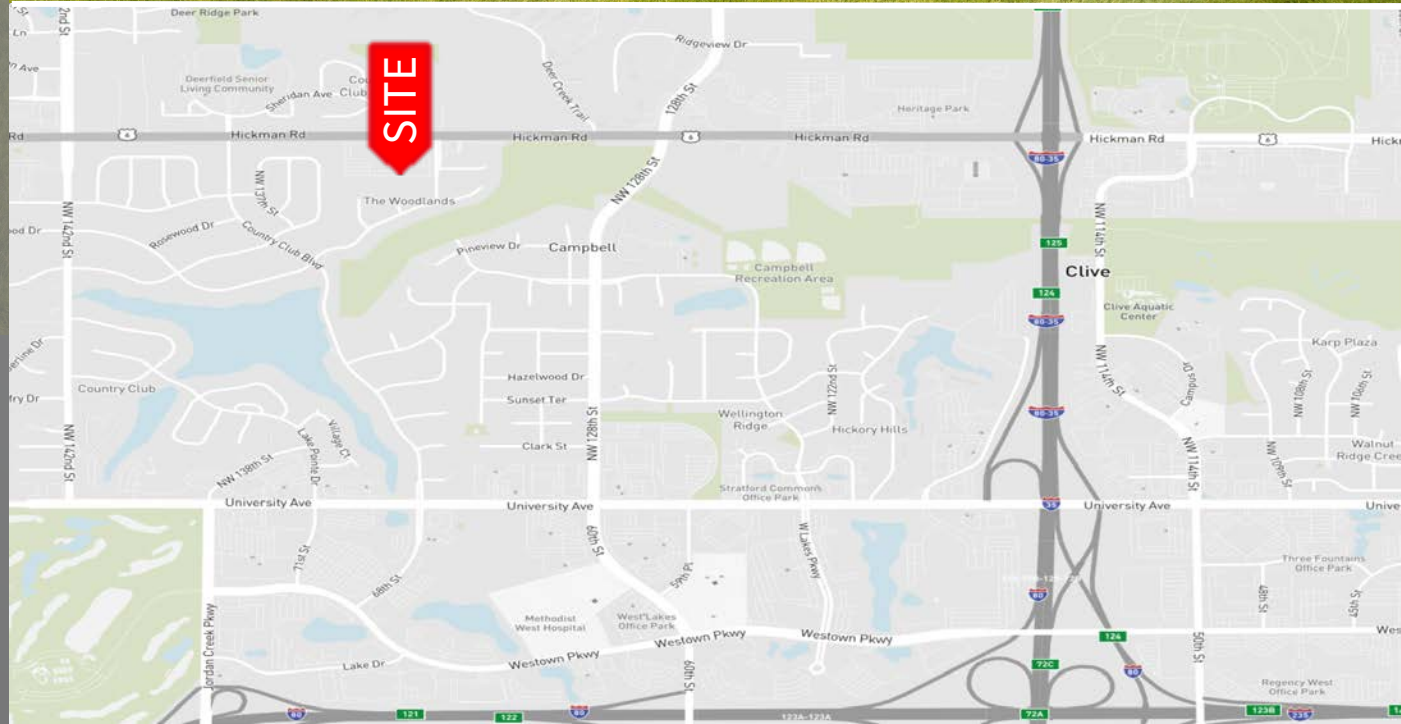
AVAILABLE	For Sale
RATE	Negotiable
CLASS	B
SIGNAGE	Available pending approval
PARKING	6 per 1,000 RSF

Highlights

- Class B, single story, corporate office
- Onsite back-up generator
- Monument and building signage available
- Convenient access to Hickman & I-80 / I-235

Justin Lossner, CCIM, SIOR
Managing Director
(515) 371-0846
justin.lossner@jll.com

Lucas Hedstrom
Vice President
(515) 564-9269
lucas.hedstrom@jll.com





13300 Hickman Road

Clive, IA 50325

16,334 RSF available

One contiguous space

Overview

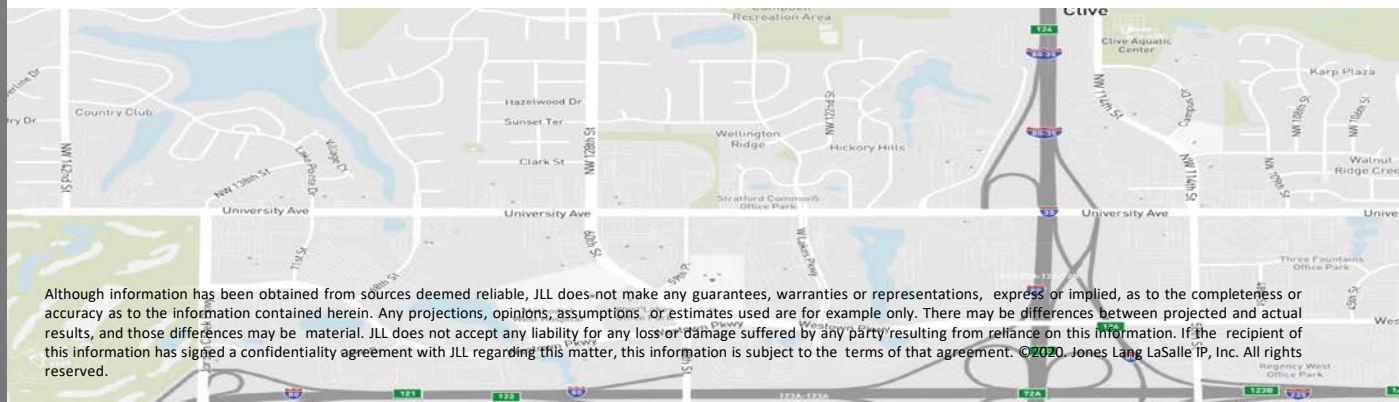
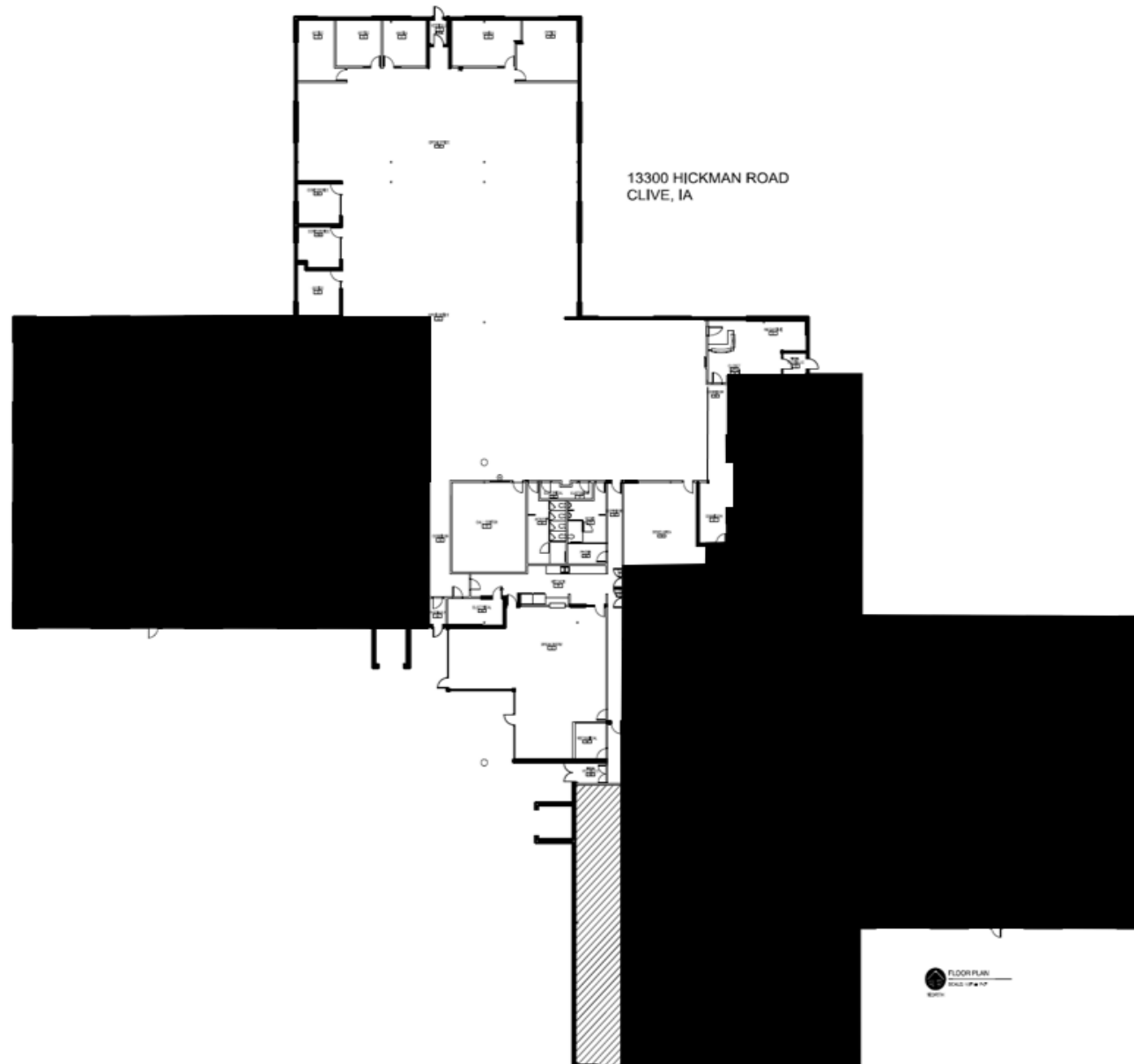
AVAILABLE	For Sale
RATE	Negotiable
CLASS	B
SIGNAGE	Available pending approval
PARKING	6 per 1,000 RSF

Highlights

- Class B, single story, corporate office
- Onsite back-up generator
- Monument and building signage available
- Convenient access to Hickman & I-80 / I-235

Justin Lossner, CCIM, SIOR
Managing Director
(515) 371-0846
justin.lossner@jll.com

Lucas Hedstrom
Vice President
(515) 564-9269
lucas.hedstrom@jll.com



Although information has been obtained from sources deemed reliable, JLL does not make any guarantees, warranties or representations, express or implied, as to the completeness or accuracy as to the information contained herein. Any projections, opinions, assumptions or estimates used are for example only. There may be differences between projected and actual results, and those differences may be material. JLL does not accept any liability for any loss or damage suffered by any party resulting from reliance on this information. If the recipient of this information has signed a confidentiality agreement with JLL regarding this matter, this information is subject to the terms of that agreement. ©2020 Jones Lang LaSalle IP, Inc. All rights reserved.