



1212 Market Street

1,657 - 14,000 RSF Contiguous Space

Great Non-Profit, Professional Services Office Space
\$2/psf per year procuring brokerage commission

Jean Ko

415 810 1914

Jean.ko@jll.com

RE Lic #: 01184706



1212 Market Street

RSF	Availability	Term	Rate
Retail Space: 1,657 RSF	Now	1-5 years	Negotiable
Retail Space: 2,215 RSF (Grove St. side)	Now	2-10 years	Negotiable
Suite 100: 1,694 RSF (Market St. side)	Now	2-10 years	\$19/SF IG
Suite 150: 2,362 RSF (Grove St. side)	Now	2-10 years	\$19/SF IG
Suite 200: 1,625 RSF (Market St. side)	Now	2-10 years	Mid \$20's IG
Suite 250: 1,425 RSF (Market St. side)	Now	2-10 years	Mid \$20's IG
Suite 300: 1,725 RSF (Market St. Side)	Now	2-10 years	\$19/SF IG
Suite 350: 2,026 RSF (Grove St. side)	Now	2-10 years	\$19/SF IG
Basement Office Space 1: 1,657 RSF	Now	2-10 years	\$1/psf/month FSG
Basement Office Space 2: 947 RSF	Now	2-10 years	\$1/psf/month FSG



Jean Ko

415 810 1914

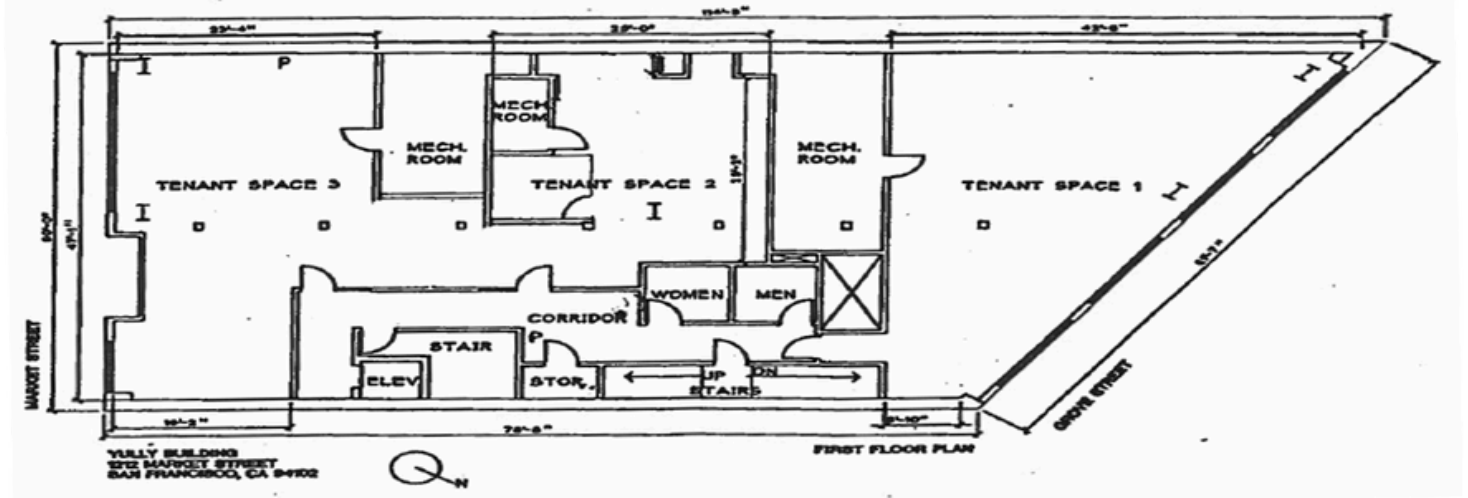
Jean.ko@jll.com

RE Lic #: 01184706

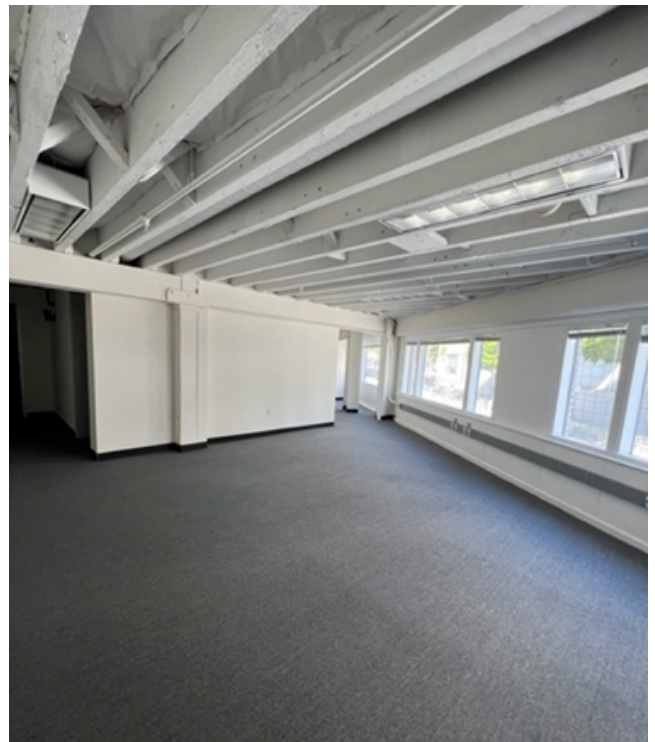


1212 Market Street

1st Floor Space



RSF	Build Out	Term	Rate
Suite 100 (Market St side) : 1,694 RSF	Fully furnished, 1 glass conf room	2-10 years	\$19/SF IG
Suite 150 (Grove St side): 2,362 RSF	Open space with 1 glass conf room	2-10 years	\$19/SF IG



Jean Ko

415 810 1914

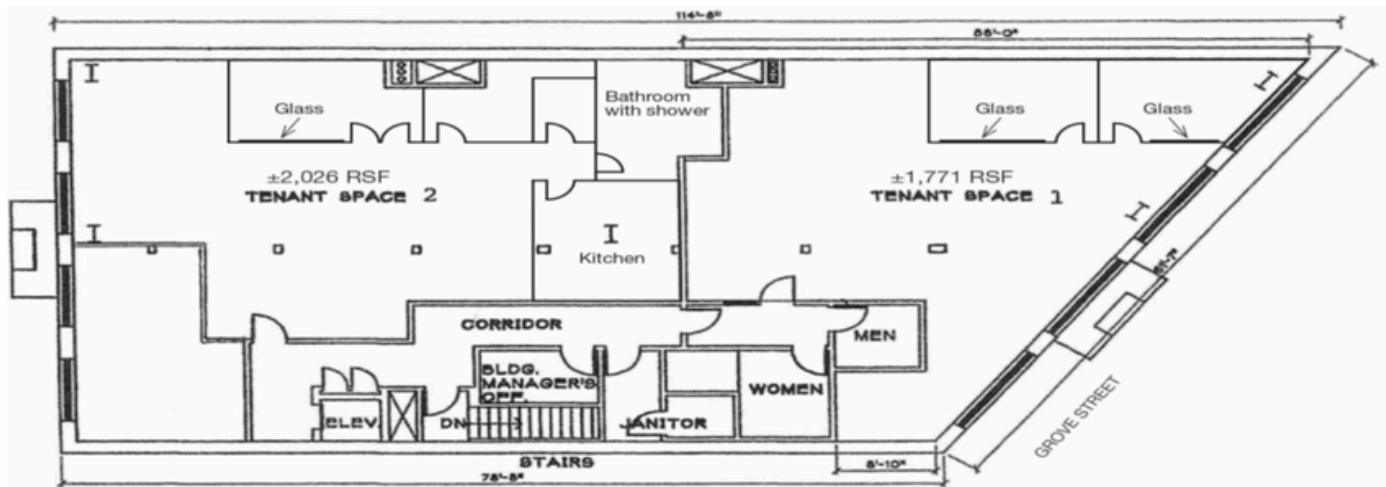
Jean.ko@jll.com

RE Lic #: 01184706

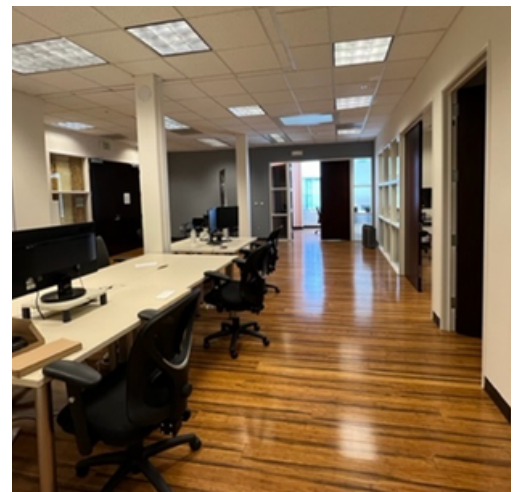
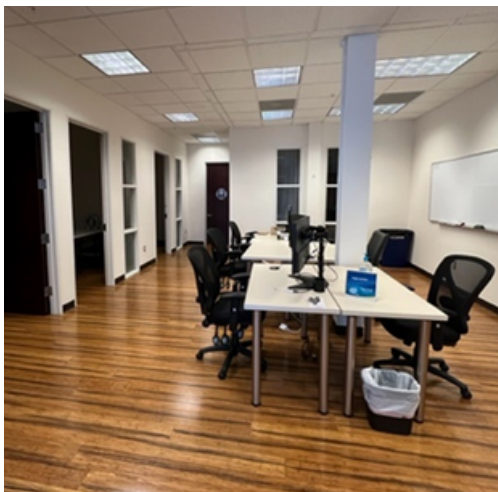


1212 Market Street

3rd Floor Space



RSF	Build Out	Term	Rate
Suite 350 (Grove St Side): 1,771 RSF	Open plan with 2 conf rooms	2-10 years	\$19/SF IG



Jean Ko

415 810 1914

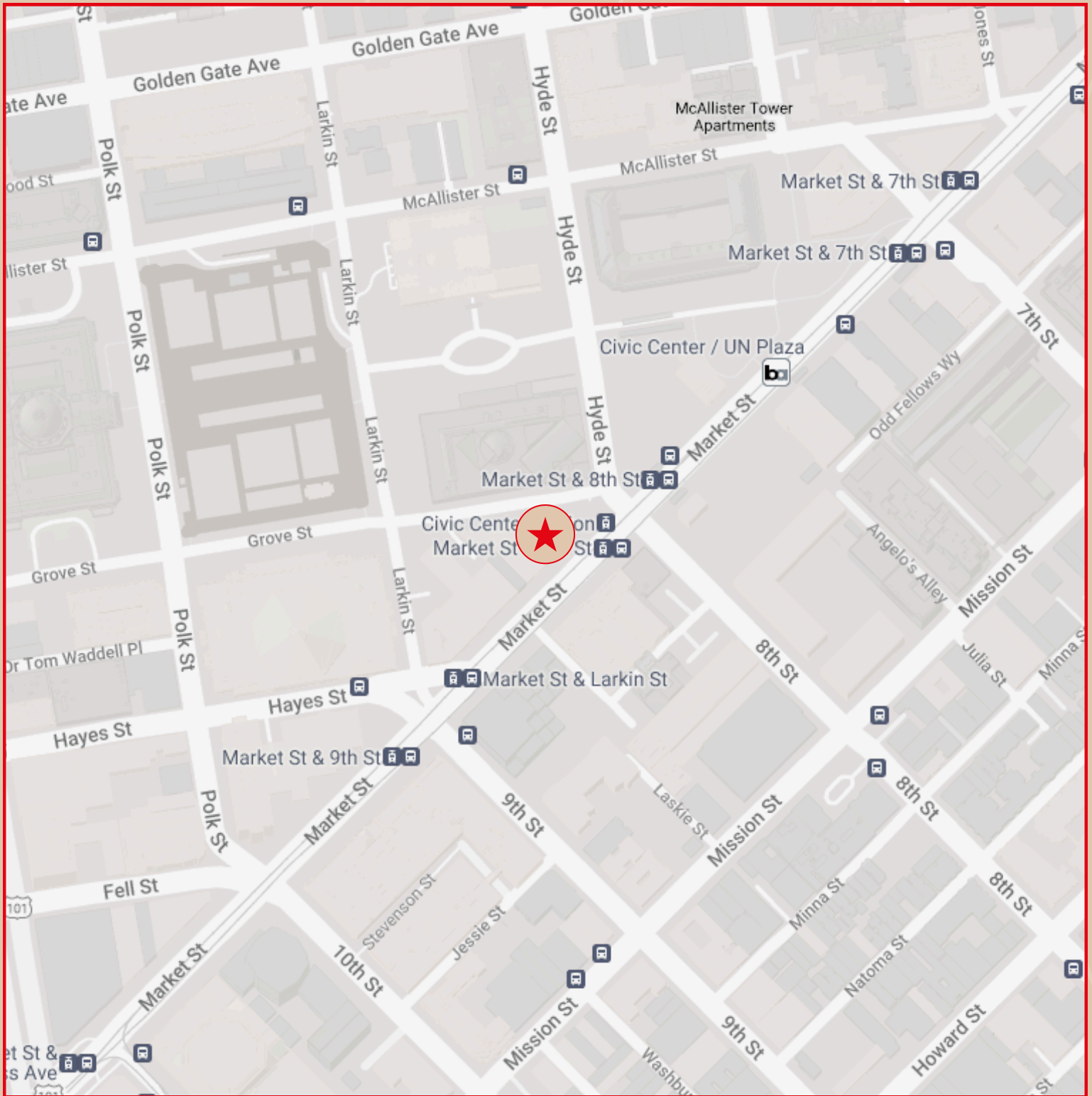
Jean.ko@jll.com

RE Lic #: 01184706



1212 Market Street

Location Map



Jean Ko

415 810 1914

Jean.ko@jll.com

RE Lic #: 01184706

