

# 575

N. DAIRY ASHFORD  
**AT KATY FREEWAY**



CLASS A OFFICE SPACE

LOCATED IN THE HEART OF WEST HOUSTON

Jones Lang LaSalle Brokerage, Inc.



# ENERGY CENTER II HAS BEEN REIMAGINED

575



±27,000 SF average  
floorplates



Direct and easy  
access to I-10



8-level structured  
parking garage  
(4/1,000)



Onsite property  
management &  
24-hr security



Access to Hershey Park -  
featuring a 10.83 mile  
hike and bike trail



On-site, full-service  
café for tenants



Multitude of  
fine restaurants and  
hotels nearby



LEED® Gold Certification  
for Core & Shell and  
Fitwel® Viral Response  
Certified

Renovated New Modern  
and Dynamic Lobby



New State of the Art  
Conferencing Center



Energized Fitness with  
Showers and Lockers

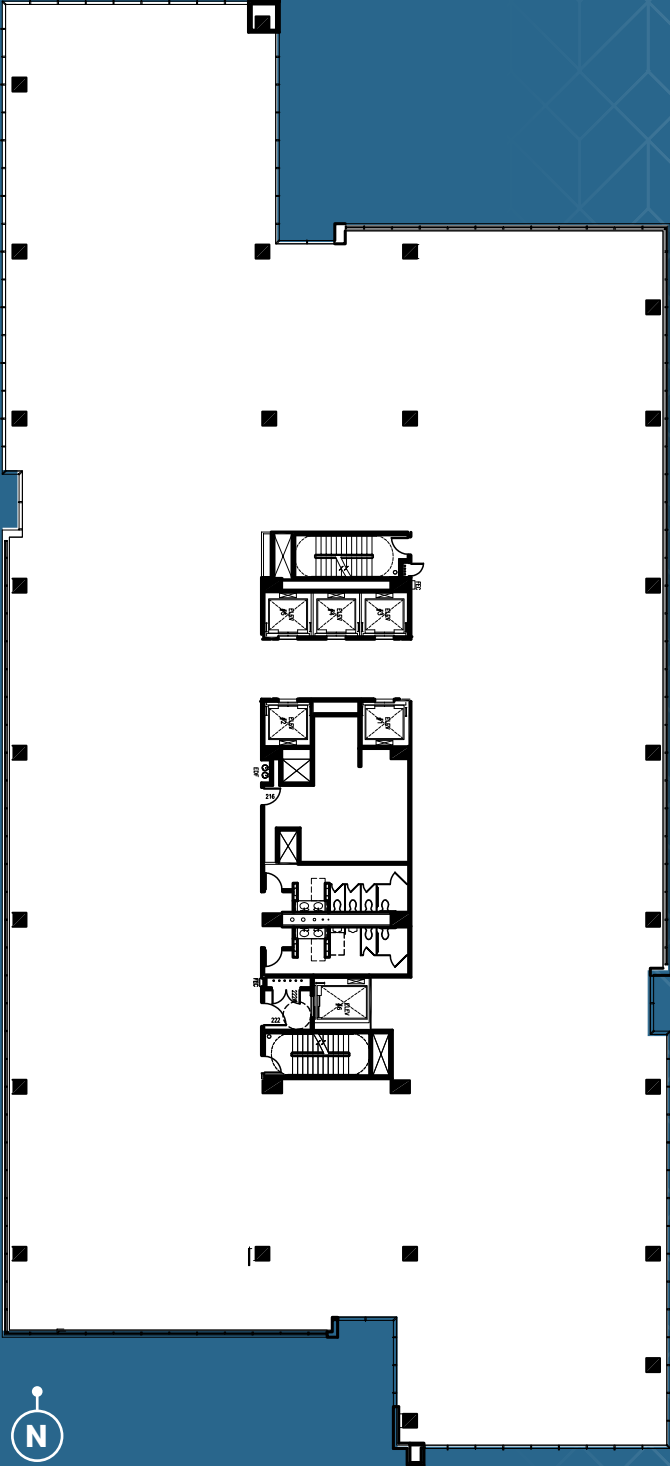






# TYPICAL FLOOR PLAN

27,614 SF (Floor 12)



## AVAILABILITY

SUITE	SIZE (SF)	FLOOR PLAN
600/640	2,488 - 13,853	
525	4,474	
475	6,344	



LOBBY



ELEVATOR LOBBY



MAIN ENTRANCE



SPEC SUITE





Logos for businesses in the top left area:

- Hungry's
- MOD PIZZA
- Viet Urban Kitchen
- SMOOTHIE KING
- FIREHOUSE SUBS
- ORIGINAL NAPOLI By Papa Jack
- La Hacienda MEXICAN RESTAURANTS SINCE 1973

Logos for businesses in the top right area:

- Kroger
- Starbucks
- POTBELLY
- Walgreens
- Chick-fil-A
- la Madeleine
- Tide Cleaners
- Subs
- Jersey Mike's
- RUSSO'S PIZZERIA
- PECAN CREEK GRILLE
- LA FITNESS
- BULLRITOS
- SMASH BURGER

Logos for businesses in the middle left area:

- SAM'S Burgers • Fries • Pies
- HASTAGO

Logos for businesses in the middle left area:

- Freddy's STEAKBURGERS
- Cane's

Logo for business in the middle area:

- KOLACHE FACTORY a history of good taste.

Logo for business in the middle right area:

- DISTRICT 7

Logo for business in the middle right area:

- cafe Benedicte

Logo for business in the bottom left area:

- BECK'S PRIME

Logo for business in the bottom middle area:

- OMNI HOTELS

# SUPREME LOCATION

575 is located in Woodcreek Park, a deed restricted, master planned development also home to Occidental Petroleum, Shell Oil, and a full-service Omni Hotel.

- INGRESS
- EGRESS





575



575 North Dairy Ashford, Houston, TX 77079



**CHRISSY WILSON**

Chrissy.Wilson@jll.com  
+1 713 888 4062

**MATT PRUITT**

Matt.Pruitt@jll.com  
+1 713 888 4089

**CHRISTIAN CANION**

Christian.Canion@jll.com  
+1 713 888 4090

Although information has been obtained from sources deemed reliable, JLL does not make any guarantees, warranties or representations, express or implied, as to the completeness or accuracy as to the information contained herein. Any projections, opinions, assumptions or estimates used are for example only. There may be differences between projected and actual results, and those differences may be material. JLL does not accept any liability for any loss or damage suffered by any party resulting from reliance on this information. If the recipient of this information has signed a confidentiality agreement with JLL regarding this matter, this information is subject to the terms of that agreement. ©2021 Jones Lang LaSalle IP, Inc. All rights reserved.