



Bradburn Village

11940 Bradburn Blvd
Westminster, CO 80031



HIGHLIGHTS



100,000 SF of retail & office space and 750+ residences



Pedestrian-oriented, 125-acre mixed use community



1,522 SF 2nd generation hair salon; 3,892 SF end-cap



Synergetic tenant mix anchored by Whole Foods



Ample parking & easy access



2nd generation restaurant space

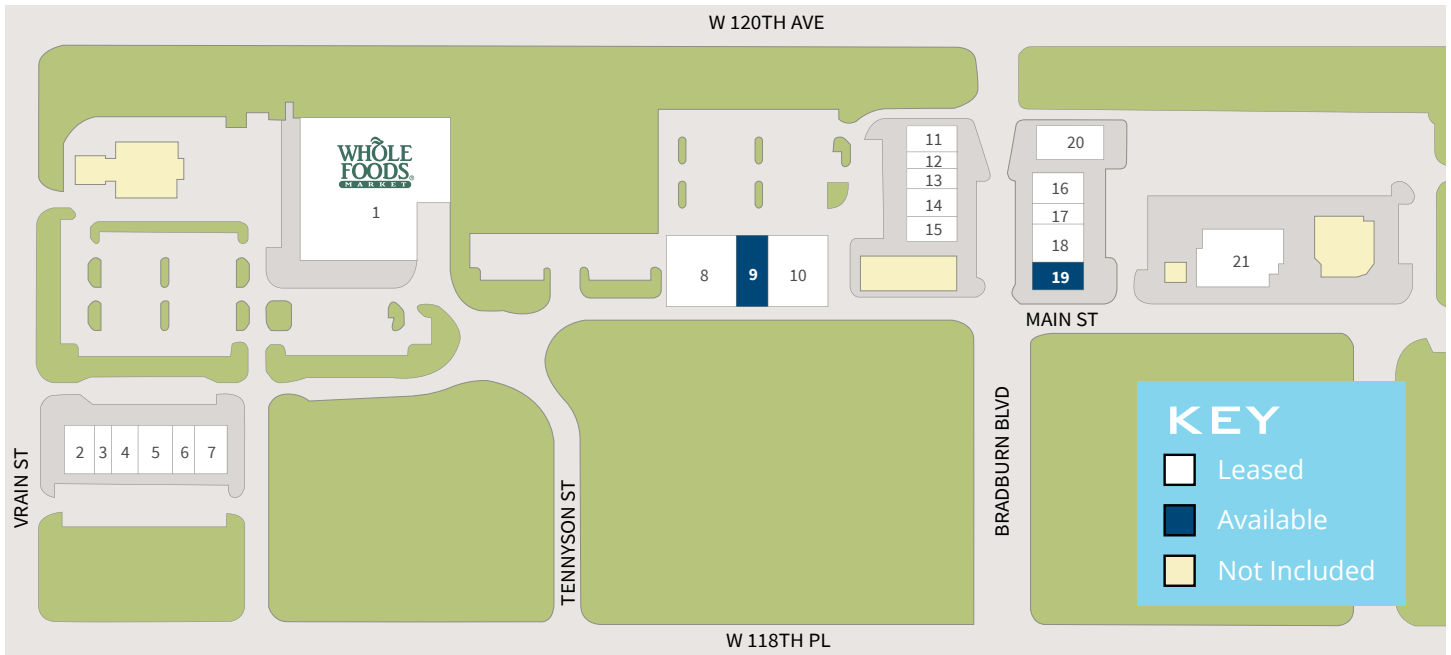


Established trade area with strong demographics

NEIGHBORHOOD PHOTOS



SITE PLAN



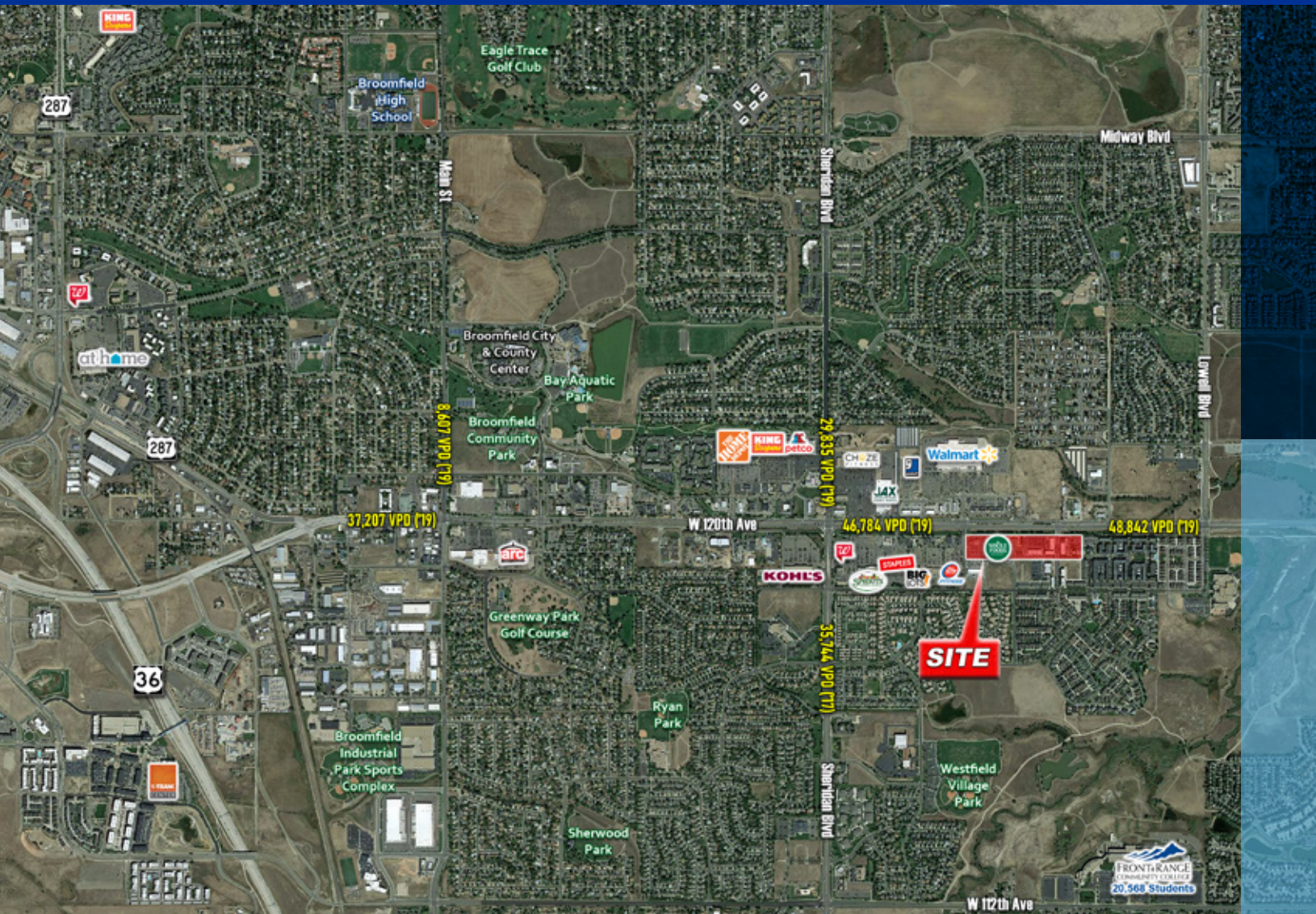
1. Whole Foods	35,700 SF	8. 5280 Burger Bar	4,567 SF	15. Bradburn Village Dentistry	2,462 SF
2. CAVA	2,800 SF	9. AVAILABLE	1,522 SF	16. Zen Asian Bistro	2,508 SF
3. Supercuts	1,200 SF	10. Fuzzy's Taco Shop	4,917 SF	17. CorePower Yoga	2,980 SF
4. Spavia	2,800 SF	11. T-Mobile	2,713 SF	18. Early Bird Restaurant	1,699 SF
5. Chuck & Don's	3,300 SF	12. Appearances Hair Studio	1,477 SF	19. AVAILABLE	3,892 SF
6. Panorma Orthopedics	1,800 SF	13. Pure Barre	1,709 SF	20. Ted's Montana Grill	4,249 SF
7. Banfield Pet Hospital	3,000 SF	14. Cornerstone Dentistry	2,740 SF	21. Goddard School	8,040 SF

RETAIL AERIAL



Bradburn Village

11940 Bradburn Blvd
Westminster, CO 80031



Demographics	1 MILE	3 MILES	5 MILES
Current Population	12,508	114,017	279,399
Total Households	4,755	43,791	106,939
Daytime Population	12,802	111,022	262,895
Avg Household Income	\$127,751	\$121,976	\$104,701

Adam Rubenstein
+1 720 418 8047
adam.rubenstein@jll.com