



For Lease Retail Space Available

3,951 RSF of Retail Space in Altoona

1005 8th Street SW,
Altoona, IA 50009

Aaron Hyde

Senior Vice President

+1 515 953 8834

aaron.hyde@jll.com

Property details

Available space: 3,951 SF

Lease rate: \$25.00 RSF NNN

Estimated OPEX: Available upon request

Property information:

- Former optometrist
- Generous floor to ceiling windows fronting 8th Street SW
- Located along Altoona's major East - West thoroughfare, 8th Street SW

Nick Anderson

Associate

+1 515 729 6015

nicholas.anderson@jll.com

Meredith Hedstrom

Vice President

+1 515 419 2963

meredith.hedstrom@jll.com

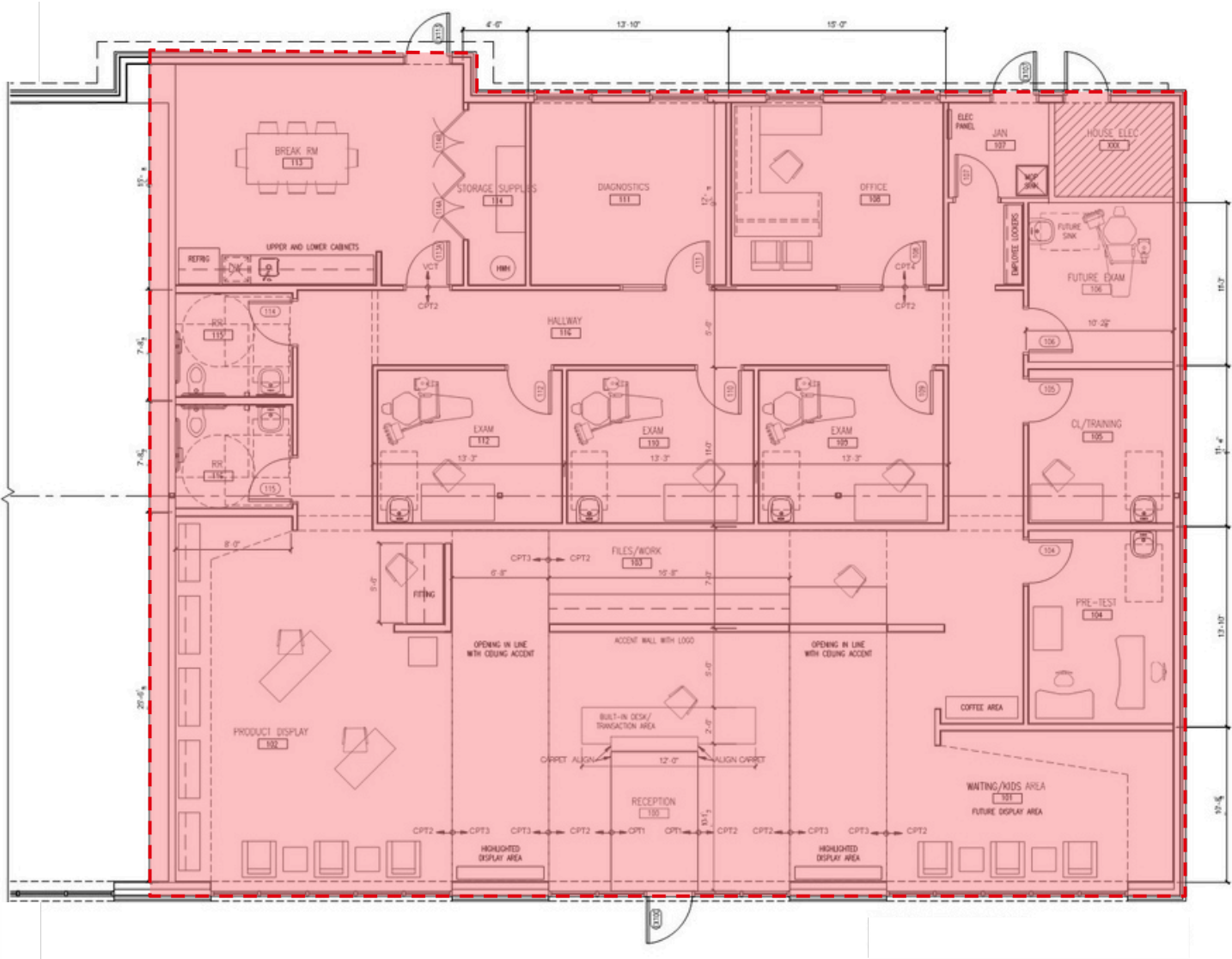
jll.com/des-moines



Images



Floor plan



Demographics

	1Mile	3 Miles	5Miles
Population	9,973	29,775	68,262
Households	3,950	11,380	25,974
Average HHIncome	\$95,806	\$97,358	\$93,633

Traffic counts

8th Street SW	16,300 VPD
1st Avenue N	10,800 VPD
17th Avenue NW	5,200 VPD

The information contained herein has been given to us by the owner of the property or other sources we deem reliable. We have no reason to doubt its accuracy, but we do not guarantee it. All information should be verified prior to purchase or lease. Jones Lang LaSalle Brokerage, Inc. is a licensed broker in the State of Iowa.



1005 8th Street SW

Altoona, IA 50009



**Contact broker for
additional information**

jll.com/des-moines

Aaron Hyde

Senior Vice President
aaron.hyde@jll.com
+1 515 953 8834

Nick Anderson

Associate
nicholas.anderson@jll.com
+1 515 729 6015

Meredith Hedstrom

Vice President
meredith.hedstrom@jll.com
+1 515 419 2963