

PLAZA 7-21

675 East 2100 South SLC, UT 84106

Under new ownership

Major interior + exterior renovations underway



OFFICE SPACE FOR LEASE



BUILDING HIGHLIGHTS



978 - 12,490 RSF
available suites



Generous
TI allowance



Numerous on-site
retail amenities



\$27.00-\$30.00/SF
Full service lease rate



4/1,000 parking
ratio with secured
and covered parking



Building signage
available for
qualified tenants





Retail amenities onsite



Spec suite kitchen finishes



New ownership with proven experience
investing and creating value in vibrant,
dynamic mixed-use neighborhoods.



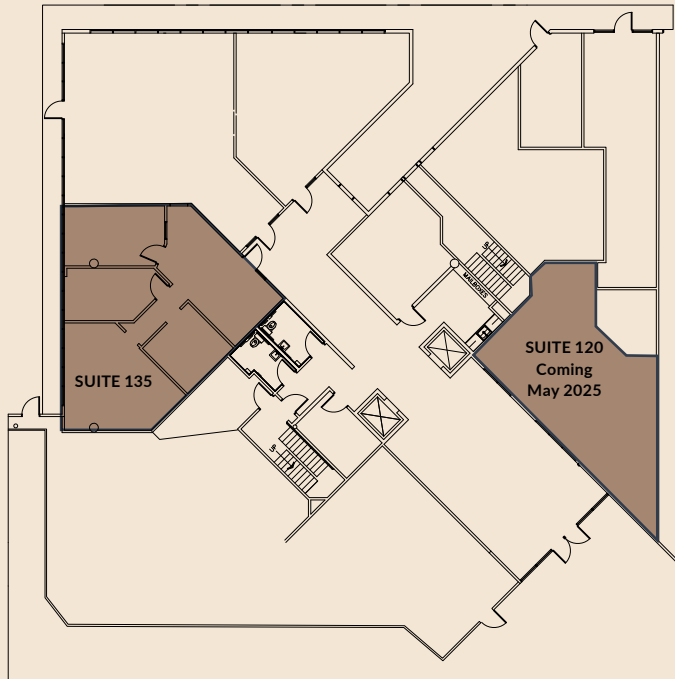
FLOOR PLANS

Move-in ready spec suites available

Floor One

Suite 135: 1,122 RSF

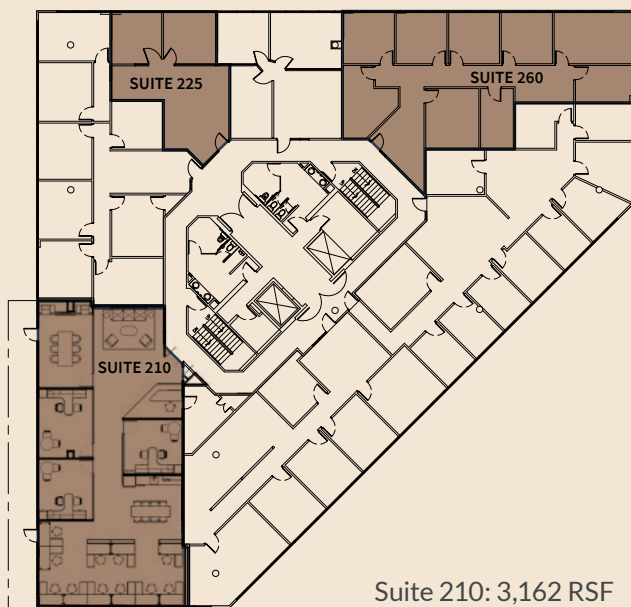
Suite 120: 1,263 RSF



Floor Two

Suite 225: 978 RSF

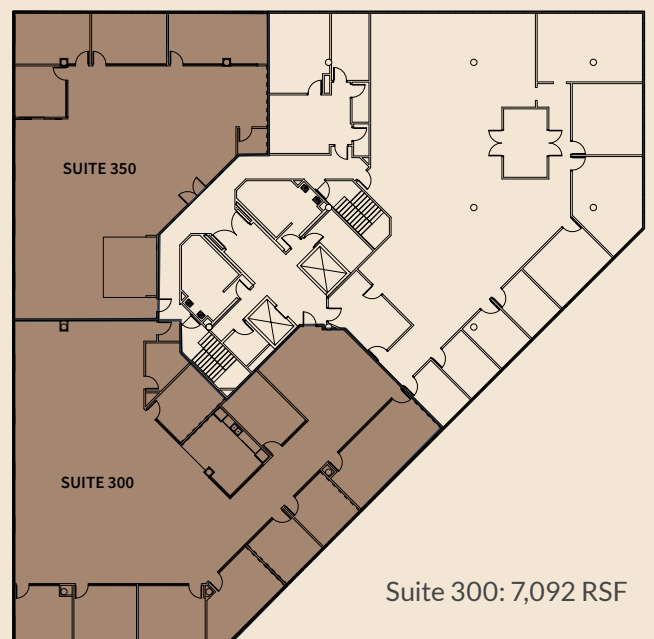
Suite 260: 2,554 RSF




Suite 210: 3,162 RSF

Floor Three

Suite 350: 4,276 RSF



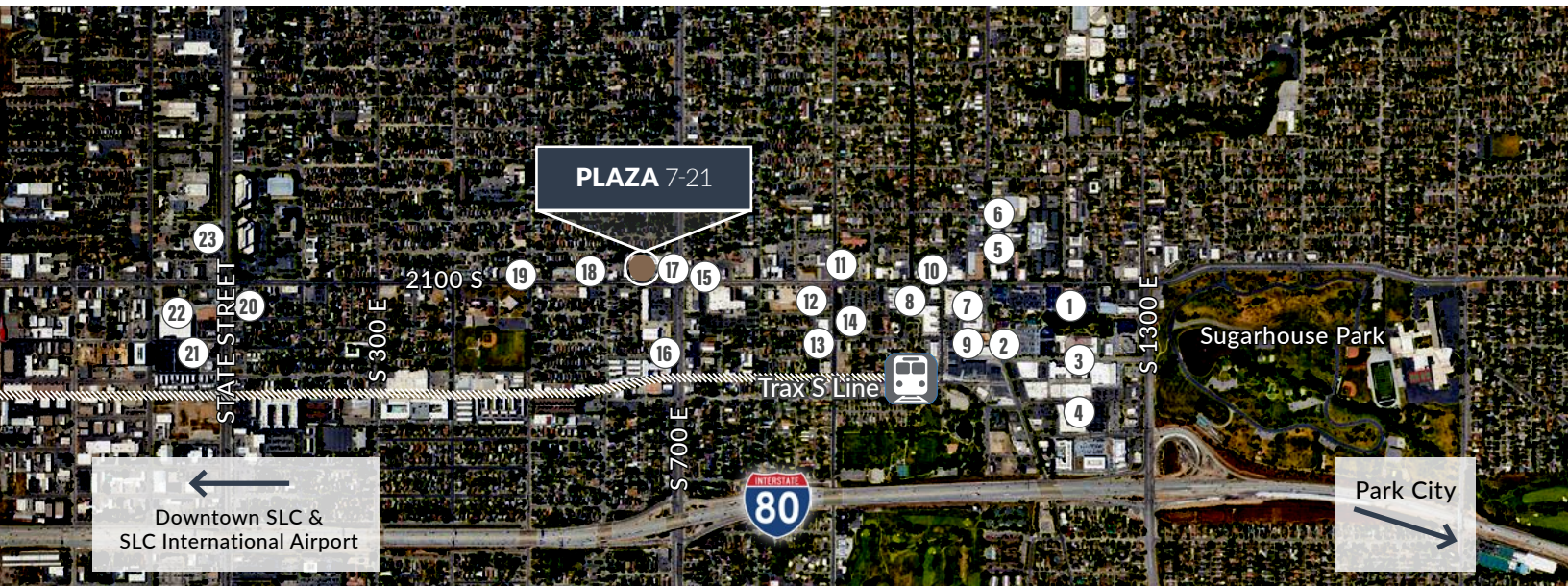
Suite 300: 7,092 RSF

 Available Suite

Spec suites are move-in ready today - Suites 210, 300, and 350

Conveniently located in Sugarhouse

One of the hippest, most vibrant neighborhoods in Salt Lake, Sugarhouse has plenty of restaurants, bars, breweries, shops, unexpected hangouts, and one big, glorious park with sweeping mountain views.



AMENITIES

- | | | | |
|---------------------------------|-----------------------|----------------------------------|----------------------------|
| 1. Chick-fil-A | 7. Wasatch Brew Pub | 13. Trolley Wing Co. | 18. TAPPO |
| 2. Whole Foods | 8. FedEx | 14. Smith's Food & Drug | 19. Saffron Valley |
| 3. Spitz - Mediterranean | 9. Buffalo Wild Wings | 15. Beans & Brews | 20. Starbucks |
| 4. Target | 10. Chipotle | 16. Chip Cookies | 21. Raising Cane's Chicken |
| 5. Sugarhouse Coffee | 11. Walgreens | 17. Jimmy John's, Pretty Bird, | 22. Winco Foods |
| 6. United States Postal Service | 12. SugarHouse BBQ | Jinya Ramen, Hanaya Poke, Crumbl | 23. Rusted Sun Pizza |

DRIVE TIMES

Downtown Salt Lake City:
10 minutes

SLC International Airport:
18 minutes

Park City:
30 minutes

PLAZA 7-21

675 East 2100 South SLC, UT 84106



For more information, please contact:

Jami Marsh

+1 801 456 9514

jami.marsh@jll.com

Amanda Lawson

+1 385 419 3191

amanda.lawson@jll.com

Jillian Hanks

+1 801 456 9517

jillian.johnson@jll.com

©2024 Jones Lang LaSalle LP, Inc. All rights reserved. All information contained herein is from sources deemed reliable; however, no representation or warranty is made to the accuracy thereof.

